



**Service information**

**Reference no.: GDA\_111408**

**Symptom**

GC66XX Calc clean Process

**Cure**

**Symptom:** After 1 to 3 months of usage, the Calc-Clean light starts flashing and the appliance starts beeping to indicate that you have to perform the Calc-Clean process. OR If you detect calc, dirt or spitting on the soleplate. This will help to clean the soleplate.

**Solution:** You have to perform the Calc-Clean process before you can continue steam ironing & reset/Disable the Flashing light & buzzing Sound

Steps to performance a Calc Clean for GC66XX:

Steps 1: Fill up the water tank halfway/Full. (Fig 6)

Steps 2 : Turn the temperature dial to CALC CLEAN (Fig 8)

Steps 3: Place the iron stably on the Calc-Clean container. (Fig 9 & 10)

Steps 4 : Make sure that the appliance is plugged in and switched ON during the Calc-Clean (Fig 7) process.

Note: The Calc-Clean container has been designed to collect scale particles and hot water during the Calc-Clean process. It is perfectly safe to rest the iron on this container during the entire process.

Step 5: Press and hold the Calc-Clean button for 2 seconds until you hear short beeps & steam sound blow from Soleplate (Fig 10)

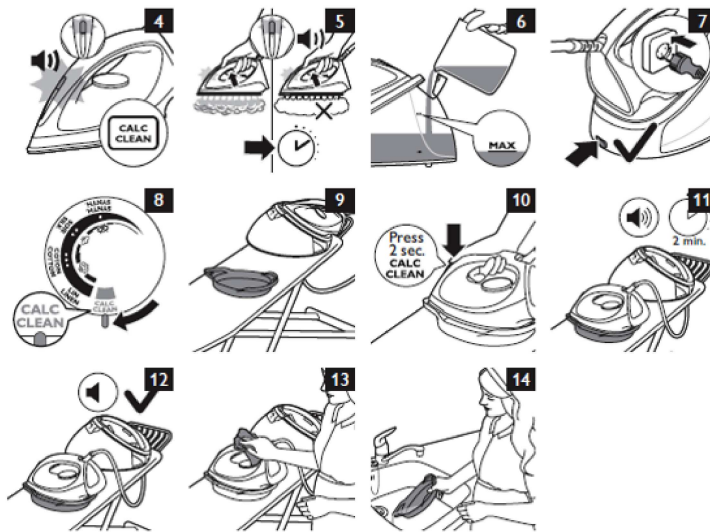
Steps 6: During the Calc-Clean process, you hear short beeps and a pumping sound. Wait approximately 2 minutes for the appliance to complete the process (Fig 11)

Steps 7: When the Calc-Clean process is completed, the iron stops beeping (Fig 12)

Steps 8 : Wipe the iron with a piece of cloth and put it back on the base station (Fig. 13).

Steps 9 : Be Careful !! As the Calc-Clean container becomes hot during the Calc-Clean process, wait approx. 5 minutes before you touch it.

Steps 10: Carry the Calc-Clean container to the sink, empty it and store it for future use (Fig. 14).



FYI: Calc clean video Demo UKL

[www.youtube.com/watch](http://www.youtube.com/watch)

Note 1: If necessary, you can repeat steps 1 to 10 to clean the soleplate scale. Make sure that you empty the Calc-Clean container before you start the Calc-Clean process to prevent overflow of hot water.

Note 2: During the Calc-Clean process, Hot clean water may come out of the soleplate if no scale has accumulated inside the iron. This is normal. Let the Iron warm up for 10-15 min to ensure all the water is dry up in the soleplate and only steam will be appear after that and this is ready for Ironing