



**Service information**

**Reference no.:** SDA\_108025

**Symptom**

No function or no heating due to blown NTC circuit SVC

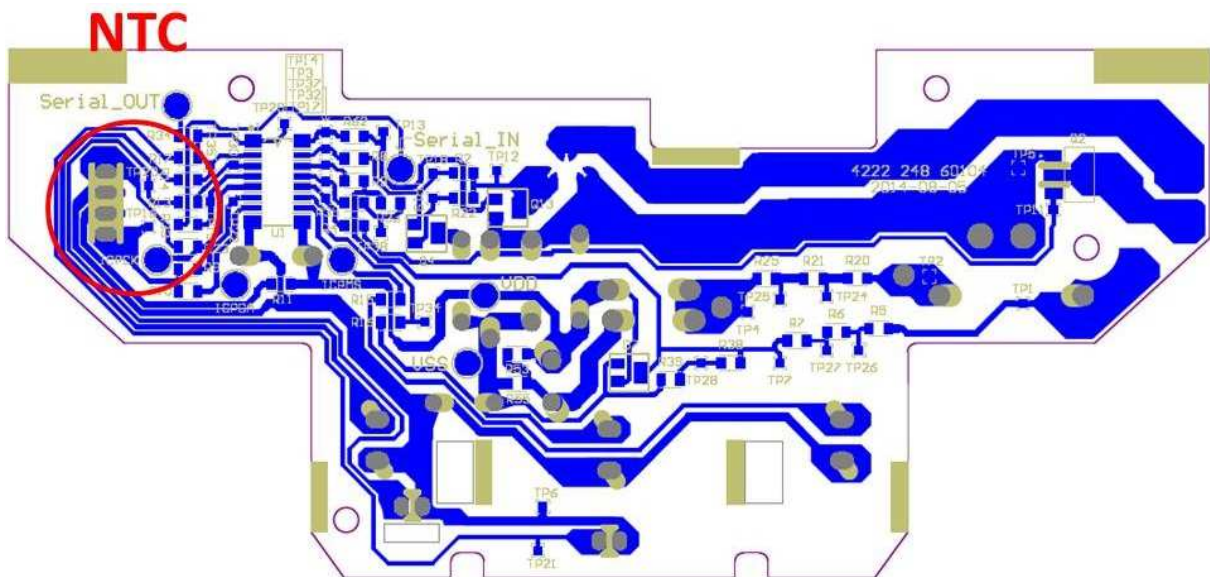
**Cure**

**INFO:**

The cause for:

- not heating the water, or
- not heater the water enough (too cold coffee), or
- signalling Boiler too cold (on/off button signaling Water container empty)

Even though the boiler water level sensor / float are OK, can be found in a blown NTC circuit on the PCBA.  
Please refer to attached image for an overview of the back (solder side) of the PCBA, and the area to inspect.



**CURE:**

Apart from replacing the PCBA

- 422225952721 HD7825
- 422225950632 HD7826/1x
- 422225952721 HD7826
- 422225947313 HD7827
- 422225948881 HD7828
- 422225945043 HD7835

also the NTC

- 422225947301

itself needs to be replaced as this is most likely the cause for the blown NTC circuit.

**REMARKS:**

- 01-10-2014: Initial version