



Service information

Reference no.: SDA_108026

Symptom

No function or no heating due to blown NTC circuit SCS

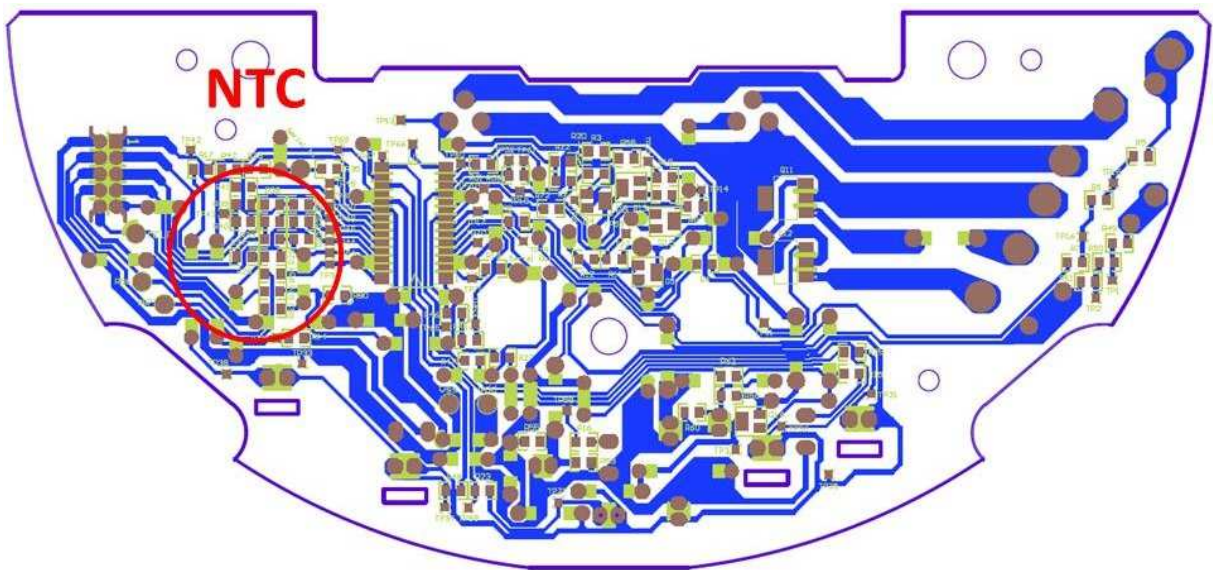
Cure

INFO:

The cause for:

- not heating the water, or
- not heater the water enough (too cold coffee), or
- signalling Boiler too cold (on/off button signaling Water container empty)

Even though the boiler water level sensor / float are OK, can be found in a blown NTC circuit on the PCBA. Please refer to attached image for an overview of the back (solder side) of the PCBA, and the area to inspect.



CURE:

Apart from replacing the PCBA

- 422225955011 (Brasil HV, Korea)
- 422225955001 (Brasil LV)
- 422225950288 (WEU)

also the NTC (422225941620) itself needs to be replaced as this is most likely the cause for the blown NTC circuit.

REMARKS:

- 30-09-2014: Initial version