



**Service information**

**Reference no.:** SDA\_108419

**Symptom**

GC66xx Screw cap removal advice

**Cure**

**INFO:**

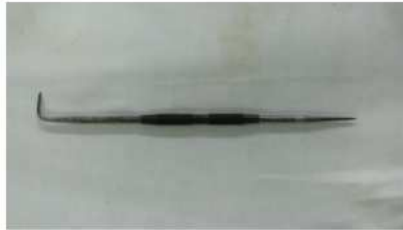
Service center technicians feedback that the housing or tray of GC66xx will be scratched/damaged during the removal of the screw cap for GC66xx stand for repair purpose

**CURE:**

1. A tool with sharp end is required for the removal of the screw cap (please see the photo of the recommended tool below).
2. Firstly, the sharp end of the tool should be placed at the center of the screw cap, positioned at about 90 degrees from the tray.
3. Exert force on the tool so that the sharp end of the tool will pierce through the screw cap. Service center technicians must make sure that the force exerted on the tool pushes the tool into the screw cap, and is not slipped by the screw cap to the surrounding of the screw cap.
4. Once the tool pierced into the screw cap, a crack line will be formed on the screw cap. Hence, the screw cap can be removed easily

**REMARKS:**Please note that the screw cap will be destroyed during the disassembly of the steam generator's stand. Hence, technicians will need to replace the screw cap after repair

**Recommended tool for the removal of screw cap**



**Recommended steps to remove the screw cap without damaging the tray/housing**

