



Service information

Reference no.: SDA_111

Symptom

Service Part Changes Notification_GC66XX Power Board_Control board

Cure

Info: Service Part Changes Notification for Power PCBA & Control PCBA

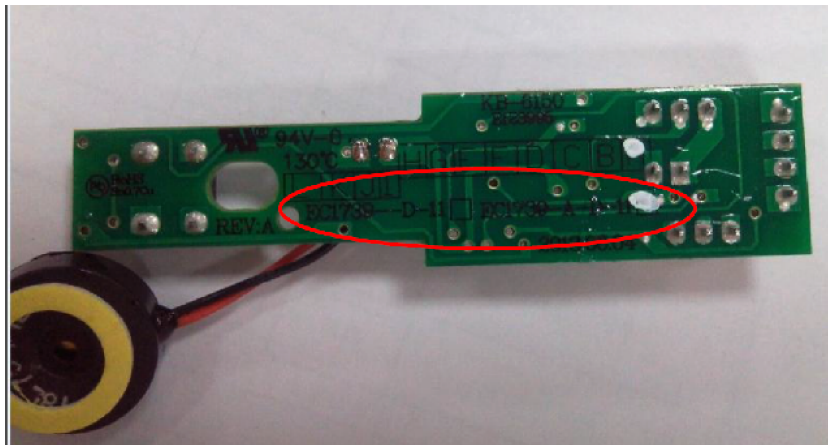
Notes:

- 1. For Power PCBA, 996510070232 and 996510073641 are interchangeable.
- 2. For Control PCBA, 996510070233 and 996510073639 are interchangeable.

	GC6601, GC6602, GC6605, GC6608, GC6611, GC6615, GC6621, GC6625, GC6631, GC6632
Generation 1 Control PCBA	Service code: 996510070233 Material number: EC1739-A-D-11
Generation 1 Power PCBA	Service code: 996510070232 Material number: EC1739-P-11
Generation 2 Control PCBA	Service code: 996510073639 Material number: EC1739-A-D-11
Generation 2 Power PCBA	Service code: 996510073641 Material number: EC1739-P-21

Identification: Generation 1 versus Generation 2

Generation 1 Control PCB 996510070233 and Generation 2 Control PCB 996510073639 Identification (Printed with EC1739-A-D-11 on the PCBA)



Generation 1 Power PCB 996510070232 Identification (Printed with EC1739-P-11 on the PCBA)



Generation 2 Power PCB 996510073641 Identification (Printed with EC1739-P-21 on the PCBA)

