



### Service information

Reference no.: SDA\_92460

### Symptom

Trouble in the rinse cycle in Odea

### Cure

INFO:  
When the appliance doesn't complete the rinsing cycle showing the ventilate alarm check if the spring position 30 (Image 1) is bended (Image 2).

CURE:  
Replace the spring (position 30) cod. 11012095.

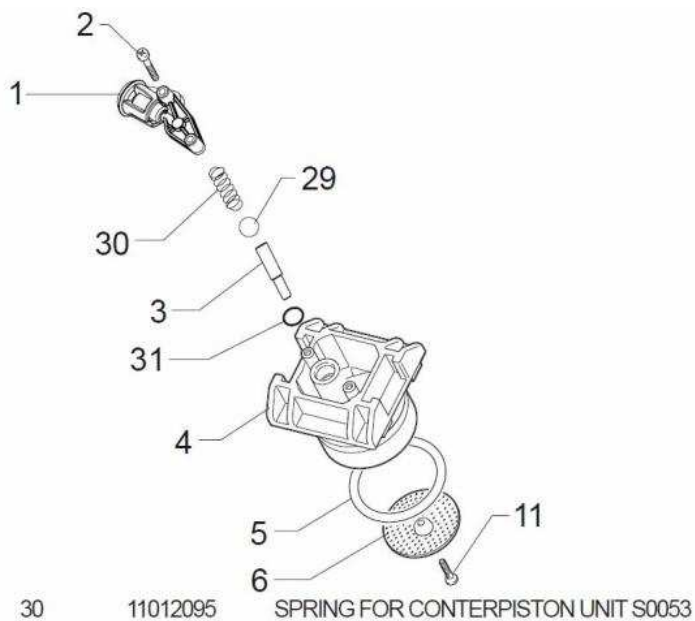




Image 2