



Service information

Reference no.: SDA_94170

Symptom

Mandatory check: Check for proper assembly of the coffee dispenser in all repairs for Exprelia line.

Cure

Symptom:

While brewing a coffee product, it is possible that some product flow come out even from the center-front side of the dispenser.

Actions:

Example for bad assembly shown in image 1 – good assembly shown in image 2.

If the dispenser is bad assembled, proceed as follows:

- Disassembly the dispenser: lowering the movable part, unscrewing the screws and press the parts which are highlighted in image 3.
- Rotate the inner body coffee dispenser as highlighted in image 4
- Re-insert the black movable part (Image 5)
- Re-assemble the chromed cover of the dispenser

All the stock (including cannibalized stock) must be controlled. §

Image1 and 2

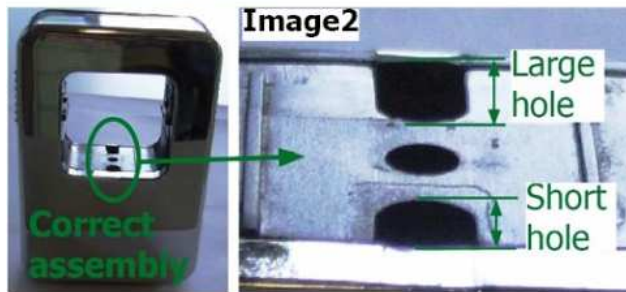
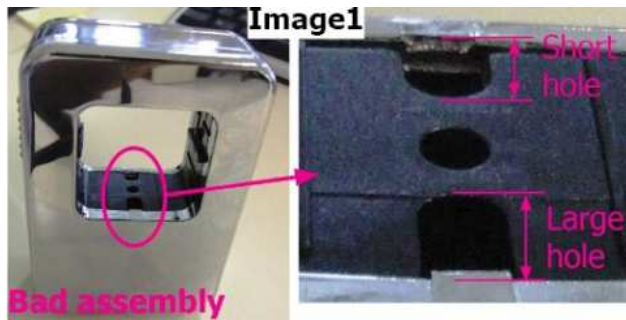


Image 3-4 and 5



ADDITIONAL INFORMATION:

SERIAL NUMBER (First serial where solution has been implemented in production):

None

IPM NUMBER (Philips Integrate Problem Management documentation reference number):

80249

INFORMATION FOR CONSUMER:

None

HISTORY:

06/07/2016 - Second Release: Modified the CURE and Actions.
26/07/2012 - First Release