



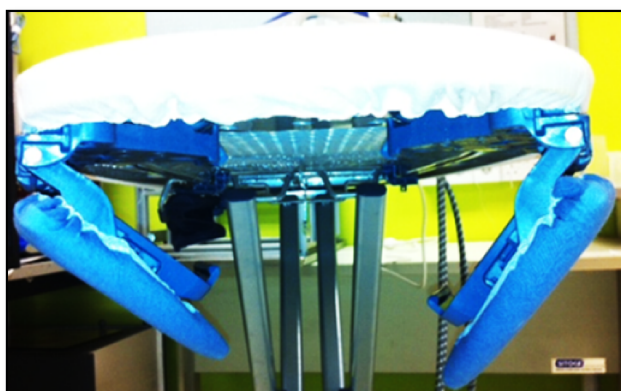
Service information

Symptom

GC240 Ironing board - Shoulder wing loose

Cure

Symptom: Shoulder wing not able to lock tightly.



Product affected:

GC240 (All date code before wk1238)

Root cause of failure:

The wing engagement becomes loose due to plastic part warpage.

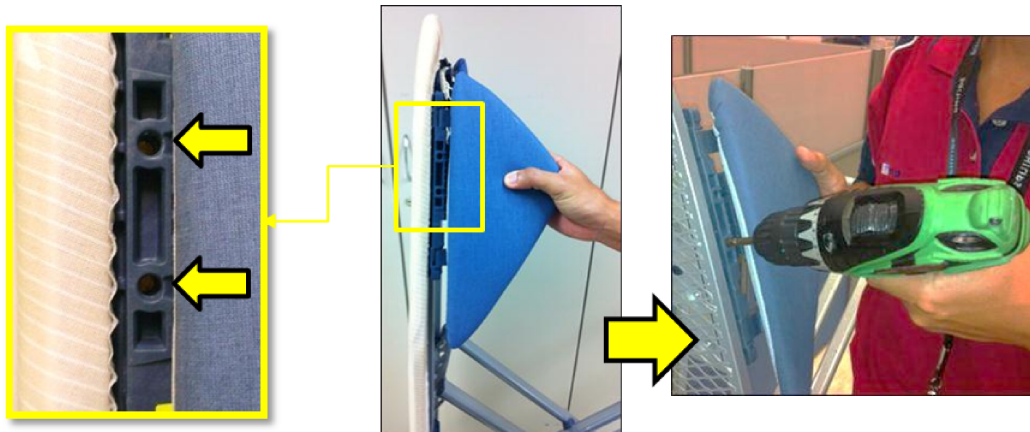
Tools required:

- Hand drilling machine
- Dia. 6mm drill bit



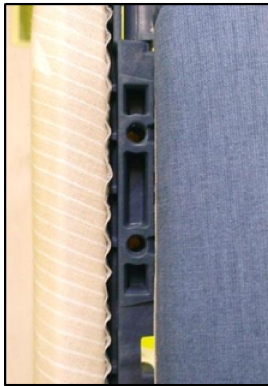
Symptom cure:

Open the wing and hold the wing with one hand. Use the hand drilling machine to drill through the x2 holes.

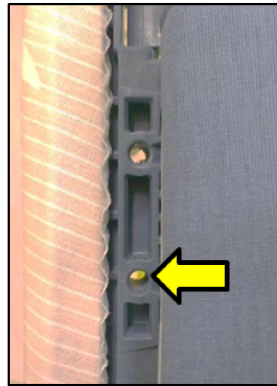


Result after drilled through.

Front view

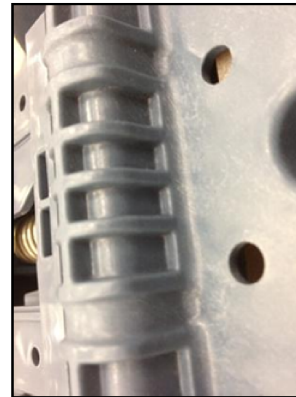


Before



After

Rear view



Before



After

Remarks:

- Both shoulder wings (total 4 holes per ironing board) are to be drilled through.
- Product corrective action: All GC240 products with date code \geq wk1238 will have the improved shoulder wing lock installed during production.