



## Service information

Reference no.: SDA\_95590

## Symptom

The milk is not frothed

## Cure

### INFO:

The milk is not frothed.

### CURE:

1. Check for milk residues on internal gasket and carafe coupling:
  - Remove (Image 1) and open the cappuccinatore (Image 2) rinse under running water.

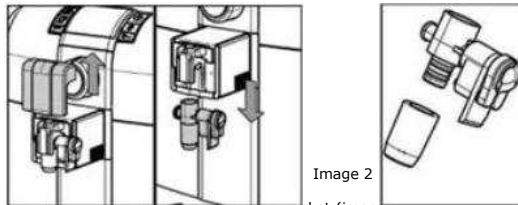


Image 1

Image 2

- Remove any milk residues from the internal gasket (image 3).

Image 3



- The carafe coupling should (Image 4) not be covered with milk residues. Clean it with an abrasive damp cloth.

Image 4



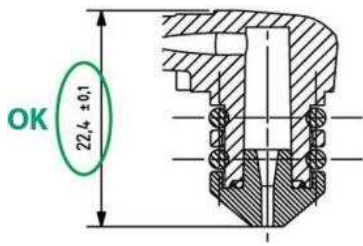
Please remind to the customer to do the clean function every time of dispensing milk beverage / beverages and It is also recommended to rinse the jug regularly with water and periodically with Saeco Cleaning Powder that cleans up all the milk ducts leading to improved results in the milk products.

2. Check if there is too much space between the O-ring and its seat (Image 5). Check that the measure is not bigger than on show in Image 6. Replace with a new one

Image 5



Image 6



3. Up to S/N TU901039054940 check poor stability of milk carafe.

In case replace the drip tray grate (image 7) by the kit code 20006952 built-up of new grate with two stoppers for giving more stability to milk carafe (image 8 and 9) and of instruction sheet for correct carafe placement.

Image 7



Image 8

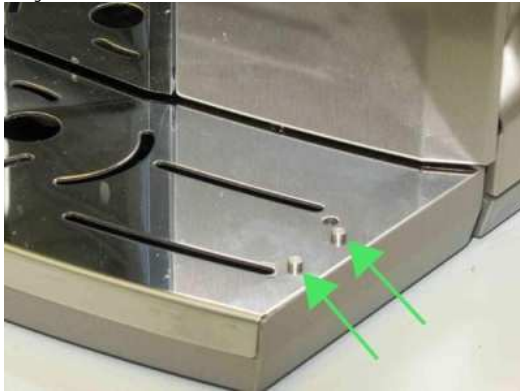
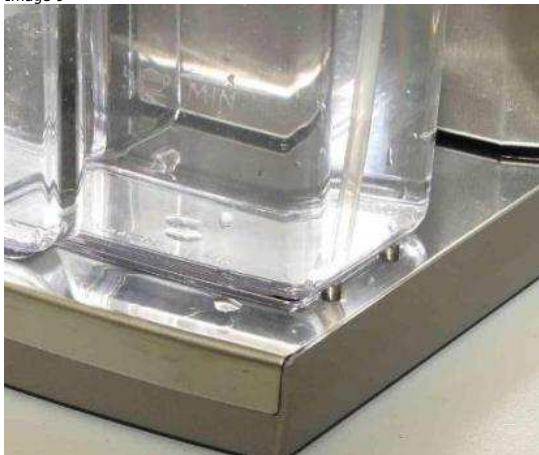


Image 9



History:  
19/07/2013 - Second Review - Includes SDAs 90428 - 84443  
06/11/2012 - First Release