



Service information

Reference no.:

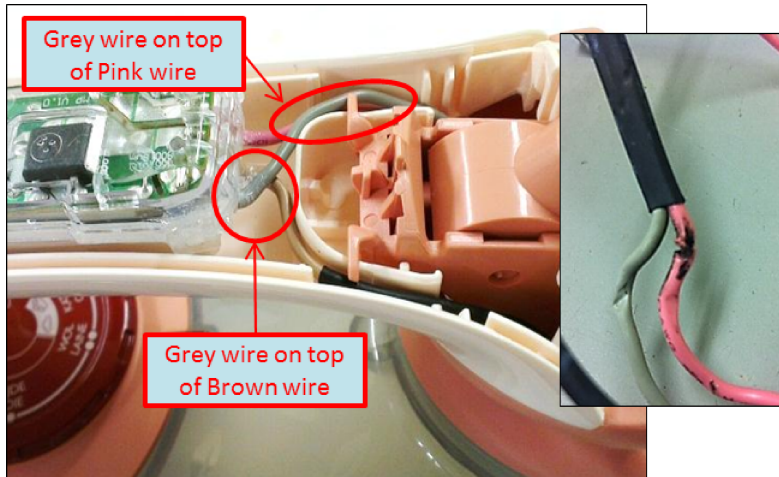
Symptom

GC36xx and GC37xx (ASO version only): No power due to ASO wires cut

Cure

Symptoms:The appliance does not switch on or power up.

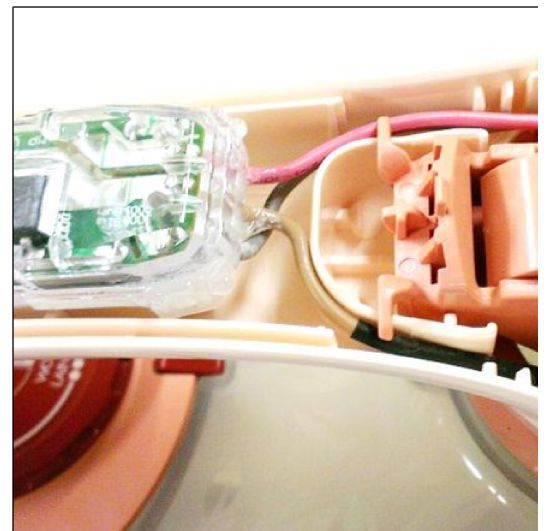
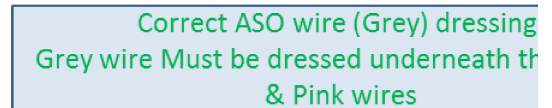
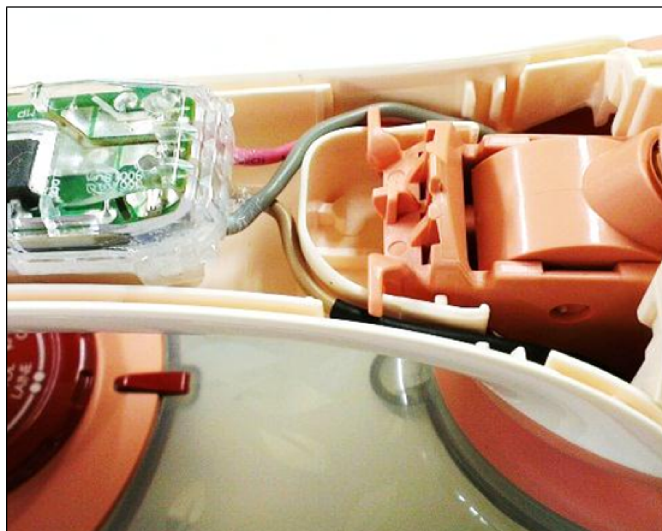
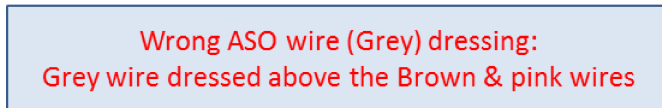
Root cause of failure:ASO wires cut and open circuit due to wrong wire (grey) dressing.



Product affected: GC36xx and GC37xx (ASO version only) Product week before wk1246.

Symptom Cure:

Replace ASO (4239 021 56033) and ensure the ASO wires dressing is correct, as shown below.



Remarks:

- All GC36xx and GC37xx (ASO version) product returns for servicing is required to re-dress the ASO wires according to the symptom cure, regardless of complaint symptoms.
- Product corrective action: All GC36xx and GC37xx (ASO version) products with date code > wk1246 will have the corrected wire dressing installed during production.