

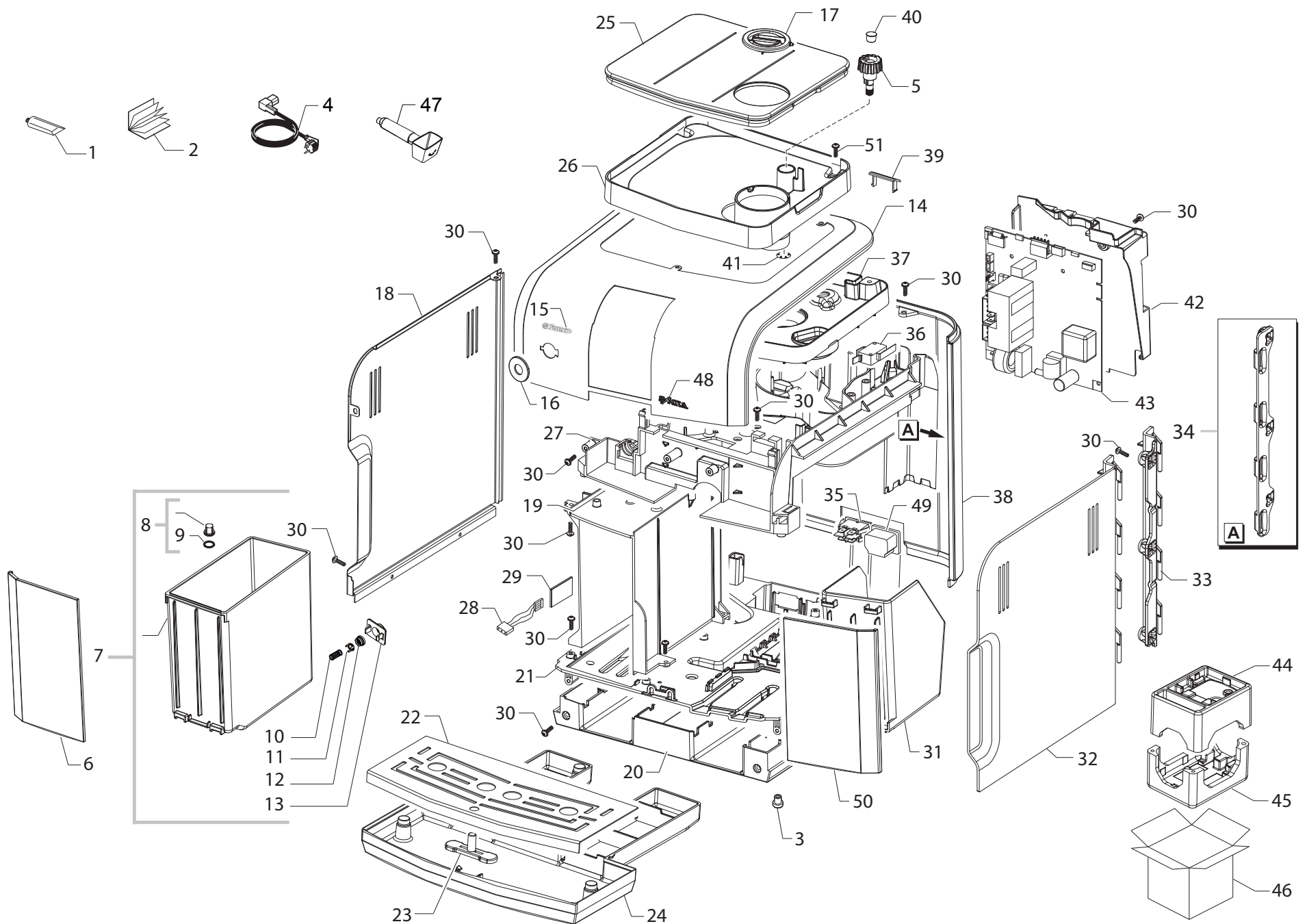
SUP037R RI9833/11-RI9833/12-RI9833/41-RI9833/43-RI9833/47



Cod. 10003124-10003350-54-55-  
Cod. 10003480-10003637-10003724-25

| POS | CODICE    | DESCRIZIONE                              | NOTE | POS | CODE      | DESCRIPTION                              | NOTE  |
|-----|-----------|--|------|-----|-----------|--|-------|
| 01  | 11005044  | TUBET.SAECO KLUBER TRIBOSTAR SIL 2 5GR   |      | 01  | 11005044  | SAECO KLUBER TRIBOSTAR SIL 2 TUBE 5GR.   |       |
| 02  | 15002085  | LIBR.ISTR.SAE SUP037R XSM/P GB/I/D/F     |      | 02  | 15002085  | MANUAL SAE SUP037R XSM/P GB/I/D/F        |       |
|     | 15002086  | LIBR.ISTR.SAE SUP037R XSM/P E/P/NL/PL    |      |     | 15002086  | MANUAL SAE SUP037R XSM/P E/P/NL/PL       |       |
|     | 15002668  | LIBR.ISTR.SAE SUP037R XSM/P GB/P         |      |     | 15002668  | MANUAL SAE SUP037R XSM/P GB/P            |       |
| 03  | 147622800 | PIEDINO PIANETA CAFFE' SILIC. TRASP.     |      | 03  | 147622800 | TRANSPARENT SILICONE FOOT                |       |
| 04  | 183911050 | CAVO AL.SCHUKO 3X1 H05VV-F NERO L=1200MM |      | 04  | 183911050 | BLACK POWER CABLE SCHUKO L=1200MM        |       |
|     | 183930650 | CAVO AL.CH 3X1 H05VV-F NER.L=1200MM      |      |     | 183930650 | PO.CABL.CH BLACK 3X1 H05VV-F L=1200      |       |
|     | 183940650 | CAVO AL.AUSTRAL.3X1 H05VV-F NERO L=1200  |      |     | 183940650 | BLACK POWER CABLE AUSTRALIA L=1200       |       |
|     | 183921950 | CAVO AL.USA SJT3 UL 16AWG NERO L=1200    |      |     | 183921950 | POWER CABLE SJT3 USA BLACK UL L=1200     |       |
|     | 17800019  | CAVO AL.BRA.10AV/2 3X1 NERO L=1200       | 220V |     | 17800019  | BLACK POWER CABLE BRAZIL 10AV/2 L=1200   | 220V  |
|     | 17800330  | CAVO AL.BRA.3X1,5 16AV/2 NER.L=1200      | 127V |     | 17800330  | BLACK POWER CABLE BRAZIL L=1200          | 127V  |
| 05  | 11013206  | POMEL.REGOL.MACINAT.CAF.XSM NER.         |      | 05  | 11013206  | BLACK GRIND.ADJUSTMENT KNOB XSM          |       |
| 06  | 11013160  | AS.COPERTURA CONTENITORI XSM             | INOX | 06  | 11013160  | CONTAINERS COVER XSM ASSY.               | INOX  |
|     | 11023345  | AS.COPERTURA CONTENITORI XSM VERN.       | NERO |     | 11023345  | CONTAINERS COVER XSM ASSY.               | BLACK |
| 07  | 11013093  | AS.CONTENIT.ACQUA XSM GRI/NAT.           |      | 07  | 11013093  | NATUR/GREY WATER CONTAINER XSM ASSY.     |       |
| 08  | 224640200 | AS.FILTRO ESTERNO X CONTENITORI ACQUA    |      | 08  | 224640200 | EXTERNAL FILTER FOR WATER CONTAINER ASSY |       |
| 09  | 140328461 | OR METRICO 0190-10 IN EPDM               |      | 09  | 140328461 | EPDM OR METRIC 0190-10                   |       |
| 10  | 11003672  | MOLLA CILINDRICA X VALV.CONT.ACQUA P0049 |      | 10  | 11003672  | SPRING FOR WATER CONTAINER VALVE P0049   |       |
| 11  | 11003673  | INSERTO X VALV.CONTEN.ACQUA P0049 GRIGIO |      | 11  | 11003673  | GREY WATER CONTAINER VALVE INSERT P0049  |       |
| 12  | 11003671  | VALVOLA X CONTENIT.ACQUA P0049 TRASP.    |      | 12  | 11003671  | TRANSP.VALVE FOR WATER CONTAINER P0049   |       |
| 13  | 11001298  | COPERCHIO X VALVOLA DUCKBILL P0049 NERO  |      | 13  | 11001298  | BLACK LID FOR DUCKBILL VALVE P0049       |       |
| 14  | 11022827  | AS.COP.SUP.CARC.C/STAFFE XSM/P           | INOX | 14  | 11022827  | UPPER CASING COVER XSM/P ASSY.           | INOX  |
|     | 11023341  | AS.COP.SUP.CARC.C/STAFFE XSM/P VERN.     | NERO |     | 11023341  | UPPER CASING COVER XSM/P ASSY.           | BLACK |
| 15  | 11011406  | PIAST.ADES.C/LOGO SAECO P0057 ARG.       |      | 15  | 11011406  | ADHES.SILVER PLATE LOGO SAECO P0057      |       |
| 16  | 11012921  | TAPPO COP.SUP.CARC.XSM CROM.             |      | 16  | 11012921  | CHROMED UPPER COVER CASING CAP XSM       |       |
|     |           | <b>FINO A MATR.TU901128095109</b>        |      |     |           | <b>UP TO S/N TU901128095109</b>          |       |
|     | 11027486  | TAPPO COP.SUP.CARC.V2 XSM CROM.          |      |     | 11027486  | CHROM.UPPER COVER CASING CAP V2 XSM      |       |
|     |           | <b>DA MATR.TU901128095110</b>            |      |     |           | <b>FROM S/N TU901128095110</b>           |       |
| 17  | 11013102  | COP.TRAMOGGIA CAF.MACIN.XSM GRI/NAT.     |      | 17  | 11013102  | NATUR/GREY GROUND COFFEE HOPPER LID XSM  |       |
| 18  | 11013107  | CARC.LATO SX XSM NER.                    |      | 18  | 11013107  | BLACK CASING LEFT SIDE XSM               |       |
| 19  | 11012708  | INS.FONDO CARC.XSM NER.                  |      | 19  | 11012708  | BLACK CASING BOTTOM INSERT XSM           |       |
| 20  | 11012681  | COPERT.FONDO CARC.XSM NER.               |      | 20  | 11012681  | BLACK CASING BOTTOM COVER XSM            |       |
| 21  | 11012601  | FONDO CARC.XSM NER.                      |      | 21  | 11012601  | BLACK CASING BOTTOM XSM                  |       |
| 22  | 11012706  | GRIGLIA VASCA REC.ACQUA XSM INOX         |      | 22  | 11012706  | SS GRATE FOR DRIP TRAY XSM               |       |
| 23  | 11013184  | GALLEG.VASCA REC.ACQUA XSM ROS.          |      | 23  | 11013184  | RED FLOAT FOR DRIP TRAY XSM              |       |
| 24  | 11013229  | AS.VASCA REC.ACQUA XSM NER.              |      | 24  | 11013229  | BLACK DRIP TRAY XSM ASSY.                |       |
| 25  | 11012725  | COP.CONT.CAF.GRANI C/GUARN.XSM GRI/NAT.  |      | 25  | 11012725  | NATUR/GREY BEAN COFF.CONTAINER LID XSM   |       |
| 26  | 11012724  | CONTENIT.CAFFE' GRANI XSM GRI/NAT.       |      | 26  | 11012724  | NATUR/GREY BEAN CONTAINER XSM            |       |
| 27  | 11012642  | PIASTRA SUPPORTO MACINACAFFE' XSM        | NERO | 27  | 11012642  | COFFEE GRINDER PLATE XSM                 | BLACK |
| 28  | 11013709  | AS.CONN.3POLI LIVELLO ACQUA XSM UL       |      | 28  | 11013709  | 3POLES CONNECTOR WATER LEVEL XSM UL      |       |
| 29  | 11000651  | SCHEDA SENSORE CAPACITIVO LIVEL.ACQ.P124 |      | 29  | 11000651  | WATER LEVEL SENSOR BOARD P124            |       |
| 30  | 12000450  | VITE TCBR 3,5X12 PLAST.ZN-N              |      | 30  | 12000450  | SCREW TCBR TORX 10 3,5X12 PLAST.ZN-N     |       |
| 31  | 11012709  | CASSET.RACCOGLI FONDI XSM NER.           |      | 31  | 11012709  | BLACK DUMP BOX XSM                       |       |





SUP037R RI9833/11-RI9833/12-RI9833/41-RI9833/43-RI9833/47

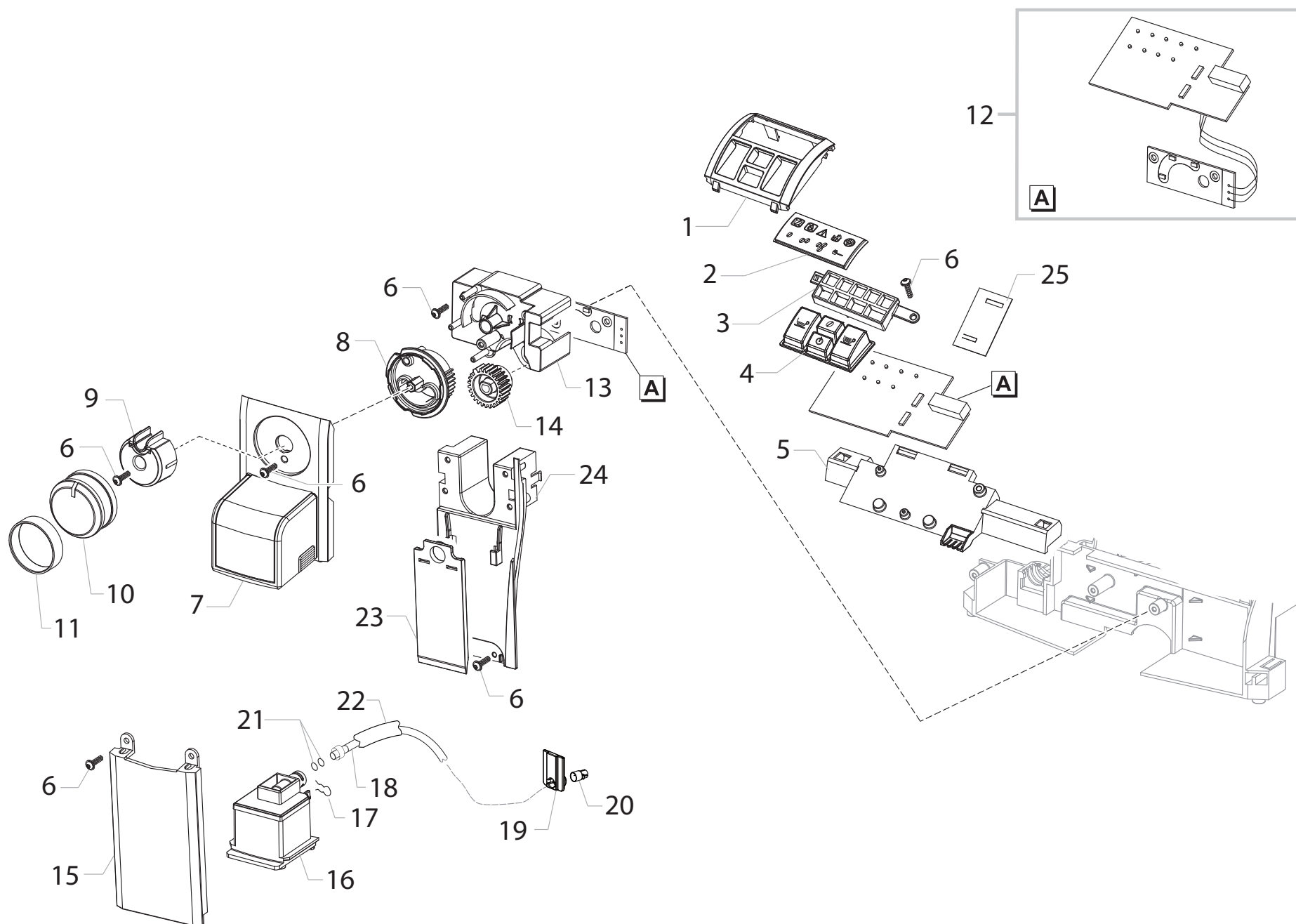


Cod. 10003124-10003350-54-55-  
Cod. 10003480-10003637-10003724-25

| POS | CODICE    | DESCRIZIONE                              | NOTE | POS | CODE      | DESCRIPTION                            | NOTE  |
|-----|-----------|--|------|-----|-----------|--|-------|
| 32  | 11013161  | AS.SPORT.LATO DX XSM                     | NERO | 32  | 11013161  | DOOR RIGHT SIDE XSM ASSY.              | BLACK |
| 33  | 11012713  | CERNIERA SPORT.PLAST.LATO DX XSM NERO    |      | 33  | 11012713  | BLACK HINGE FOR DOOR RIGHT SIDE XSM    |       |
| 34  | 11012714  | CERNIERA CARC.POST.XSM NER.              |      | 34  | 11012714  | BLACK HINGE FOR REAR CASING XSM        |       |
| 35  | NE03.038  | INTERRUTTORE BIPOLARE FUSIT C1250AR      |      | 35  | NE03.038  | BIPOLAR SWITCH FUSIT C1250AR           |       |
| 36  | NE05.013  | MICROINTERRUTTORE                        |      | 36  | NE05.013  | MICROSWITCH                            |       |
| 37  | 11012719  | COPERTURA INSONORIZZAZIONE MC XSM NER.   |      | 37  | 11012719  | SOUNDPROOFING COVER FOR COFGRINDER XSM |       |
| 38  | 11013104  | CARC.POST.XSM NER.                       |      | 38  | 11013104  | BLACK REAR CASING XSM                  |       |
| 39  | 11013704  | COP.ACCESSO INFRAROSSI XSM TRASP.        |      | 39  | 11013704  | TRANSARENT COVER INFRAREDS ACCESS XSM  |       |
| 40  | 149213000 | TAPPO X POMELLI CONT.CAF.GRANI TRASP.    |      | 40  | 149213000 | TRANSP.CAP FOR KNOBS BEAN CONTAINER    |       |
| 41  | 120350604 | ANELLO 6 UNI 7434 BRUN.                  |      | 41  | 120350604 | SHAFT 6 UNI 7434                       |       |
| 42  | 11012301  | PROTEZIONE SCHEDA PWR/CPU P0057 NER.     |      | 42  | 11012301  | BLACK PWR/CPU BOARD PROTECTION P0057   |       |
| 43  | 11012593  | AS.CPU+SW XSM V2                         | 230V | 43  | 11012593  | CPU+SW AS.XSM V2                       | 230V  |
|     | 11013638  | AS.CPU+SW XSM V2                         | 120V |     | 11013638  | CPU+SW ASSEMBLY XSM V2                 | 120V  |
| 44  | 13000910  | INS.SUP.SCATOLA XSM PS-E                 |      | 44  | 13000910  | PS-E UPPER INSERT FOR BOX XSM          |       |
| 45  | 13000911  | INS.INF.SCATOLA XSM PS-E                 |      | 45  | 13000911  | PS-E LOWER INSERT FOR BOX XSM          |       |
| 46  | 13001160  | SCATOLA LITOG.XSM/P SAE SYNTIA FOCUS     |      | 46  | 13001160  | DISPLAY BOX XSMP SAE SYNTIA FOCUS      |       |
| 47  | 146680850 | MISURINO X CAFFE' SMART NER.             |      | 47  | 146680850 | BLACK COFFEE MEASURE SMART             |       |
| 48  | 11022065  | PIAST.ADES.C/LOGO SYNTIA ARG.            |      | 48  | 11022065  | ADHES.SILVER PLATE LOGO SYNTIA         |       |
| 49  | 12000280  | PRESA A VASCHETTA C/SMUSSI EN 60320 C 13 |      | 49  | 12000280  | CUP SOCKET EN 60320 C 13               |       |
| 50  | 11021826  | AS.COP.CASSET.FONDI XSM                  | INOX | 50  | 11021826  | SS DUMP BOX COVER XSM ASSY.            | INOX  |
|     | 11023346  | AS.COP.CASSET.FONDI XSM VERN.            | NERO |     | 11023346  | DUMP BOX COVER XSM ASSY.               | BLACK |
| 51  | 129912504 | VITE TCBR 3,5X14 PLAST.ZN-N              |      | 51  | 129912504 | SCREW TCBR TORX 10 3,5X14 PLAST.ZN-N   |       |







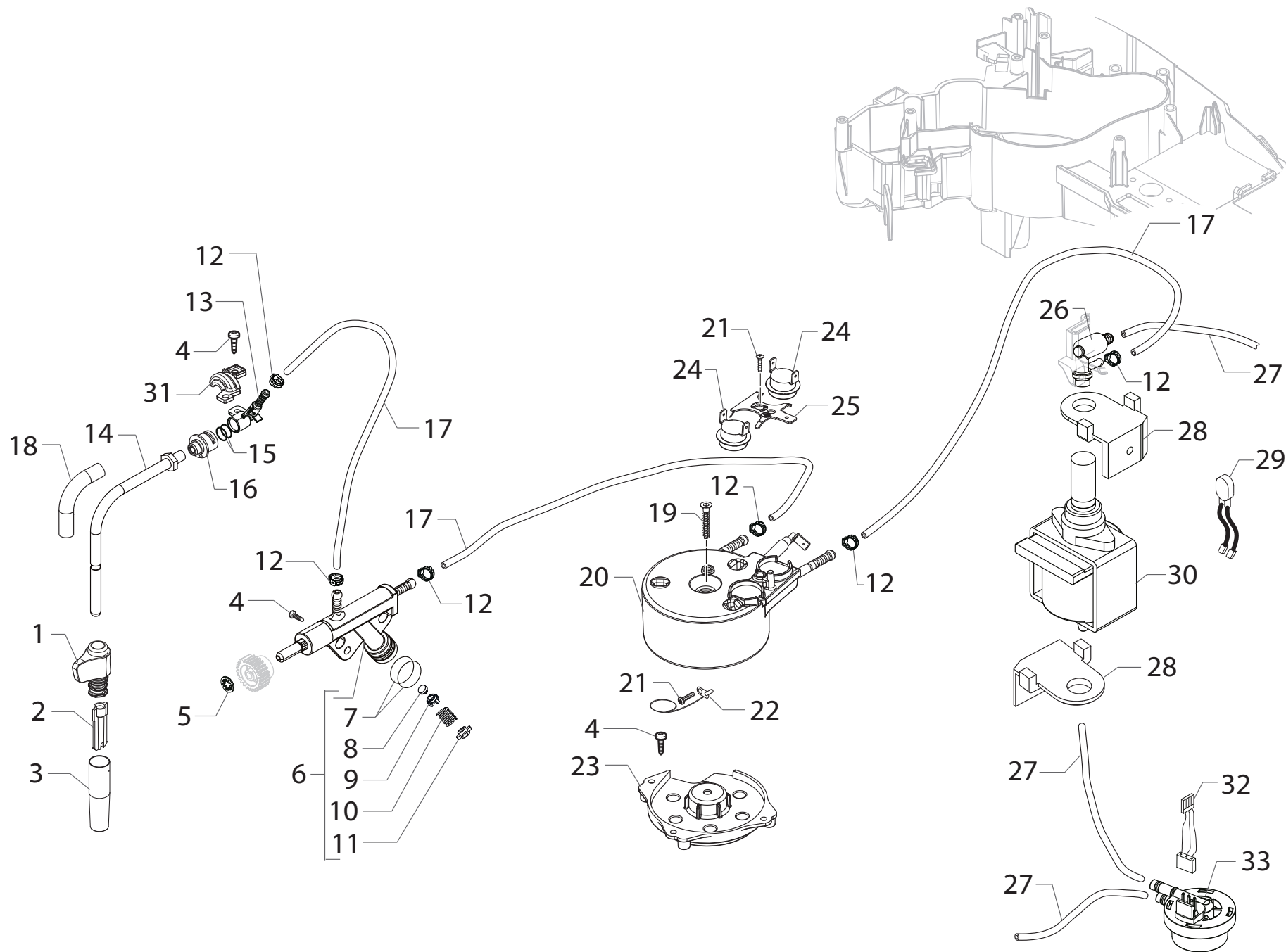
SUP037R RI9833/11-RI9833/12-RI9833/41-RI9833/43-RI9833/47



Cod. 10003124-10003350-54-55-  
Cod. 10003480-10003637-10003724-25

| POS | CODICE    | DESCRIZIONE                              | NOTE       | POS | CODE      | DESCRIPTION                              | NOTE    |
|-----|-----------|--|------------|-----|-----------|--|---------|
| 01  | 11022826  | CORNICE DISPLAY XSM/P CROM.              |            | 01  | 11022826  | CHROMED DISPLAY FRAME XSM/P              |         |
| 02  | 11013523  | VETRINO DISPLAY XSM/P TRASP.             |            | 02  | 11013523  | TRANSPARENT GLASS FOR DISPLAY XSM/P      |         |
| 03  | 11022837  | SUPP.GUIDA LUCE XSM/P NER.               |            | 03  | 11022837  | BLACK GUIDE LIGHT SUPPORT XSM/P          |         |
| 04  | 11022824  | TASTIERA XSM/P VERN.ARG.SER.             |            | 04  | 11022824  | SILVER TOUCH PANEL S/SCREEN XSM/P        |         |
| 05  | 11013526  | SUPP.DISPLAY XSM/P NER.                  |            | 05  | 11013526  | BLACK DISPLAY SUPPORT XSM/P              |         |
| 06  | 12000450  | VITE TCBR 3,5X12 PLAST.ZN-N              |            | 06  | 12000450  | SCREW TCBR TORX 10 3,5X12 PLAST.ZN-N     |         |
| 07  | 11021760  | AS.SUPP.EROGAT.CAFFE' XSM CROM.SER.      |            | 07  | 11021760  | CHROM.COFF.DISPENSER SUPP:S/SCR.XSM ASSY |         |
| 08  | 11013117  | AS.SUPP.POMEL.COMANDI C/CALAM.XSM NER.   |            | 08  | 11013117  | BLACK CONTROL KNOB SUPPORT XSM ASSY.     |         |
| 09  | 11012701  | POMEL.COMANDI XSM NER.                   |            | 09  | 11012701  | BLACK CONTROL KNOB XSM                   |         |
| 10  | 11013091  | COPERT.POMEL.COMANDI XSM/H ZAMA CROM.    |            | 10  | 11013091  | CHROMED CONTROL KNOB COVER XSM/H         |         |
| 11  | 11021454  | INS.COPERT.POMEL.COMANDI XSM NER.        |            | 11  | 11021454  | BLACK CONTROL KNOB COVER INSERT XSM      |         |
| 12  | 11013423  | AS.SCHEDE INTERF.LED+CABLAGGIO UL XSM/P  |            | 12  | 11013423  | INTERFACE LED BOARDS+UL CABLES XSM/P ASS |         |
| 13  | 11012704  | SUPP.SCHEDA POMELLO XSM NER.             |            | 13  | 11012704  | BLACK KNOB ELECTR.BOARD SUPPORT XSM      |         |
| 14  | 11004120  | INGRANAGGIO Z=26 VAPORE/ACQUA P0057 NER. |            | 14  | 11004120  | BLACK STEAM/WATER GEAR Z=26 P0057        |         |
| 15  | 11013096  | FRONTALINO XSM CROM.                     |            | 15  | 11013096  | CHROMED FRONT PLATE XSM                  |         |
| 16  | 11013070  | AS.EROGATORE CAFFE' SALD.XSM NER.        |            | 16  | 11013070  | BLACK COFFEE DISPENSER XSM ASSY.         |         |
| 17  | 9011.144  | FORCELLA X TUBO D.4 ACC.INOX             |            | 17  | 9011.144  | SS FORK FOR TUBE D.4                     |         |
| 18  | 11004132  | AS.TUBO TEFLON 2X4 L=250MM+1BOC.DIST13MM |            | 18  | 11004132  | TEFLON TUBE 2X4 L=250 MM ASSY            |         |
| 19  | 11005100  | PIASTRINA X BOCCOLA TUBO TEFLON 4X2 P124 |            | 19  | 11005100  | PLATE FOR 4X2 TEFLON TUBE P124           |         |
| 20  | 11005101  | BOCCOLA X TUBO TEFLON 4X2 P124           |            | 20  | 11005101  | BUSH FOR 4X2 TEFLON TUBE P124            |         |
| 21  | 140328059 | OR 2015 IN SILICONE PTFE/FDA             |            | 21  | 140328059 | OR 2015 IN SILICONE PTFE/FDA             |         |
| 22  | 149361200 | TUBO SILICONE NERO 7,5X9,3               | IN MATASSA | 22  | 149361200 | BLACK SILICONE TUBE 7,5X9,3              | IN ROLL |
| 23  | 11013411  | SUPP.PARTE MOBILE EROGAT.CAFF.XSM NER.   |            | 23  | 11013411  | BLACK COF.DISPENSER MOBILE PART SUPP.XSM |         |
| 24  | 11012707  | SUPP.FRONTALINO XSM NER.                 |            | 24  | 11012707  | BLACK FRONT PANEL SUPPORT XSM            |         |
| 25  | 17000445  | PROTEZ.SCHEDA KYB-LED XSM/P NERO         |            | 25  | 17000445  | BLACK KYB-LED BOARD PROTECTION XSM/P     |         |





SUP037R RI9833/11-RI9833/12-RI9833/41-RI9833/43-RI9833/47

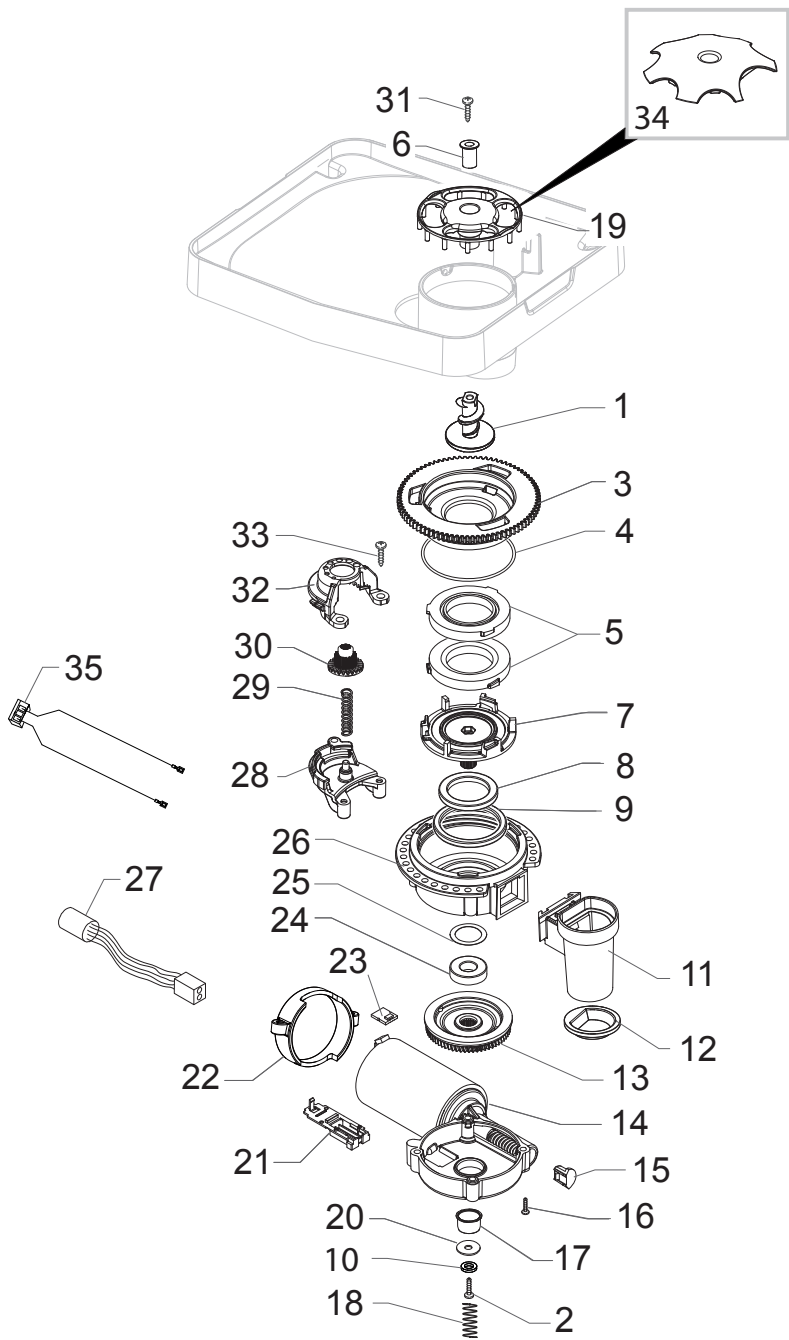


Cod. 10003124-10003350-54-55-  
Cod. 10003480-10003637-10003724-25

| POS | CODICE    | DESCRIZIONE   | NOTE         | POS | CODE      | DESCRIPTION  | NOTE       |
|-----|-----------|---|--------------|-----|-----------|--|------------|
| 01  | 11007194  | IMPUGNATURA TUBO VAPORE G0053 NERO                                    |              | 01  | 11007194  | BLACK STEAM TUBE HANDGRIP G0053  |            |
| 02  | 11001620  | CANOTTO INT.PANNARELLO P0049 NERO                                     |              | 02  | 11001620  | BLACK PANNARELLO INTERNAL TUBE P0049                                   |            |
| 03  | 11011504  | COPERTURA PANNARELLO P0049 OT/CROM.TF                                 |              | 03  | 11011504  | TF/CHROM.PANNARELLO COVER P0049  |            |
| 04  | 12000450  | VITE TCBR 3,5X12 PLAST.ZN-N   |              | 04  | 12000450  | SCREW TCBR TORX 10 3,5X12 PLAST.ZN-N                                   |            |
| 05  | 128210600 | RONDELLA ELASTICA X ALBERI D=6 MM                                     |              | 05  | 128210600 | ELASTIC WASHER FOR SHAFT D=6MM   |            |
| 06  | 11012381  | RUB.REGOLATORE FLUSSO ACQ/VAP.V2 P0057                                |              | 06  | 11012381  | FLOW SELECTOR FAUCET V2 P0057  |            |
| 07  | 12000893  | OR METRICO 0120-20 IN EPDM  |              | 07  | 12000893  | OR METRIC 0120-20 IN EPDM  |            |
| 08  | 11008104  | VALVOLA A FUNGO REGOL.DI FLUSSO P0057                                 |              | 08  | 11008104  | MUSHROOM VALVE FOR FLOW SELECTOR P0057                                 |            |
| 09  | 11008105  | SUPP.VALVA FUNGO REGOL.DI FLUSSO P0057                                |              | 09  | 11008105  | SUPPORT VALVE FOR FLOW SELECTOR P0057                                  |            |
| 10  | 11008077  | MOLLA VALVOLA REGOLAT.DI FLUSSO P0057                                 |              | 10  | 11008077  | SPRING FOR VALVE FLOW SELECTOR P0057                                   |            |
| 11  | 11008106  | TAPPO VALVA FUNGO REGOL.DI FLUSSO P0057                               |              | 11  | 11008106  | VALVE CAP FOR FLOW SELECTOR P0057                                      |            |
| 12  | 12000892  | FASCETTA OETIKER D=9,5 16700004                                       |              | 12  | 12000892  | OETIKER CLAMP D=9,5 16700004   |            |
| 13  | 11005757  | SUPPORTO TUBO VAPORE P0057 NEU.                                       |              | 13  | 11005757  | STEAM TUBE SUPPORT P0057   |            |
| 14  | 11013637  | AS.TUBO VAPORE+DADO XSM OT/CROM.TF                                    |              | 14  | 11013637  | TF/CHROMED STEAM TUBE XSM ASSY.  |            |
| 15  | 140324461 | OR ORM 0060-20 IN TERMOIL   |              | 15  | 140324461 | OR ORM 0060-20 IN TERMOIL  |            |
| 16  | 11011127  | BOCCOLA TUBO VAPORE P0057 PA6 NERO                                    |              | 16  | 11011127  | BLACK PA6 BUSH FOR STEAM TUBE P0057                                    |            |
| 17  | 16000380  | TUBO SIL.RETIN.5X8,9  | IN MATASSA   | 17  | 16000380  | 5X8,9 SILICONE TUBE  | IN ROLL    |
| 18  | 11012923  | PROTEZIONE TUBO VAPORE XSM CROM.<br><b>FINO A MATR.TU901128095109</b> |              | 18  | 11012923  | CHROMED STEAM TUBE PROTECTION XSM<br><b>UP TO S/N TU901128095109</b>   |            |
| 19  | 12001369  | VITE TSP 5X35 PLAST.INOX  |              | 19  | 12001369  | SCREW TSP TORX 10 5X35 PLAST.SS  |            |
| 20  | 11013735  | AS.CALD.TUB.SLIM  | 230V - 1300W | 20  | 11013735  | SLIM TUB.BOILER ASSY.  | 230V-1300W |
|     | 11023153  | AS.CALD.TUB.SLIM  | 120V-1300W   |     | 11023153  | SLIM TUB.BOILER ASSY.  | 120V-1300W |
| 21  | 12001715  | VITE TCB M4X8 AUTOFORM.S/TEST.DENT.ZN-B                               |              | 21  | 12001715  | SCREW TCB TORX 20 M4X8 AUTOFORMING ZN-B                                |            |
| 22  | 190800100 | SENSORE TEMPERATURA NTC UL L=280MM                                    |              | 22  | 190800100 | TEMPERATURE SENSOR NTC UL L=280MM                                      |            |
| 23  | 11022791  | SUPPORTO CALDAIA TUB.SLIM/EXSL NERO                                   |              | 23  | 11022791  | BLACK SLIM/EXSL BOILER SUPPORT   |            |
| 24  | 12001033  | TERMOSTATO ONE SHOT 190°  |              | 24  | 12001033  | THERMOSTAT ONE SHOT 190°   |            |
| 25  | 11001751  | MOLLA X TERMOSTATI CALD.TUBOL.V3 ACC.                                 |              | 25  | 12001033  | THERMOSTATES SPRING FOR BOILER   |            |
| 26  | 11004689  | AS.VALV.SIC.16-18 BAR OT/TEA  |              | 26  | 11004689  | TEA/BRASS SAFETY VALVE 16-18 BAR ASSY.                                 |            |
| 27  | JS01.022  | TUBO SILICONE 5X10 60 SHORE   | IN MATASSA   | 27  | JS01.022  | SILICONE TUBE 5X10 60 SHORE  | IN ROLL    |
| 28  | 149205850 | SUPPORTO POMPA TYP ULKA C/SMUSSO NERO                                 |              | 28  | 149205850 | BLACK PUMP SUPPORT TYPE ULKA   |            |
| 29  | 11009747  | AS.CONNETTORE 2POLI POMPA P0057 UL                                    |              | 29  | 11009747  | 2POLES CONNECTOR PUMP P0057 UL   |            |
| 30  | 12000140  | POMPA ULKA EP5/S GW   | 230V-50HZ    | 30  | 12000140  | ULKA PUMP EP5/S GW   | 230V-50HZ  |
|     | 12000142  | POMPA ULKA EAP5/S   | 120V-60HZ    |     | 12000142  | ULKA PUMP EAP5/S   | 120V-60HZ  |
|     | 12000182  | POMPA ULKA EP5/S GW   | 220V-60HZ    |     | 12000182  | ULKA PUMP EP5/S GW   | 220V-60HZ  |
| 31  | 11013894  | FORCELLA FERMA TUBO VAP.GXSM NER                                      |              | 31  | 11013894  | BLACK FORK FOR STEAM TUBE GXSM   |            |
| 32  | 11005948  | AS.CONNETTORE 3 POLI TURBINA P0057                                    |              | 32  | 11005948  | 3POLES CONNECTOR FLOWMETER P0057                                       |            |
| 33  | NV99.099  | AS.TURBINA D=1,2 932-8521/00  |              | 33  | NV99.099  | TURBINE D=1,2 932-8521/00 ASSY.  |            |
|     | 11026683  | AS.CALD.TUB.SLIM STD C1 T190° 1300W 230V                              |              |     | 11026683  | SLIM TUB.BOIL.STD C1 T190° 1300W 230V AS                               |            |
|     | 11026684  | AS.CALD.TUB.SLIM STD C1 T190° 1300W 120V<br>CON PART.N°20-21-22-24-25 |              |     | 11026684  | SLIM TUB.BOIL.STD C1 T190° 1300W 120V AS<br>WITH PART.N°20-21-22-24-25 |            |







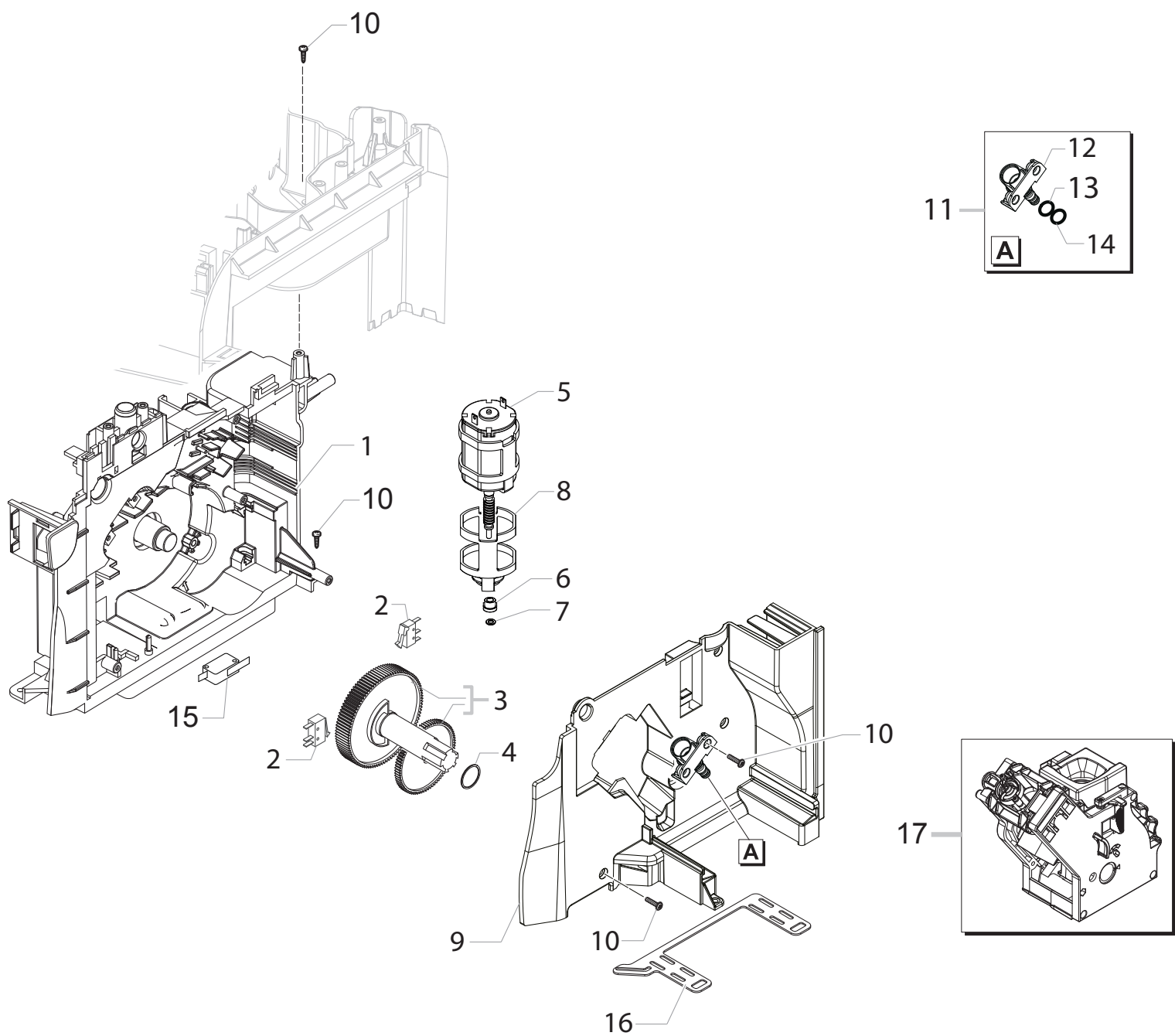
SUP037R RI9833/11-RI9833/12-RI9833/41-RI9833/43-RI9833/47



Cod. 10003124-10003350-54-55-  
Cod. 10003480-10003637-10003724-25

| POS | CODICE    | DESCRIZIONE                              | NOTE         | POS | CODE      | DESCRIPTION                              | NOTE         |
|-----|-----------|--|--------------|-----|-----------|--|--------------|
| 01  | 11010031  | VITE INCREMENTO CORTA MC ZAMA TEA        | USA UL       | 01  | 11010031  | TEA ZAMA INCREASE SCREW GRINDER          | USA UL       |
| 02  | 11024208  | VITE INCREMENTO CORTA MC ZAMA TORN.TEA   |              | 02  | 11024208  | TEA SHORT ZAMA INCREASE SCREW GRINDER    |              |
| 03  | 129574802 | VITE TCB M4X30 ZN-B                      |              | 03  | 129574802 | SCREW TCB TORX 20 M4X30 ZN-B             |              |
| 04  | 149198250 | SUPPORTO SUP.MACINA MACINACAFFE V3 NERO  |              | 04  | 149198250 | UPPER GRINDER SUPPORT COFFEEGRINDER      |              |
| 05  | 140328960 | OR METRICO 0530-15 IN NBR FDA            |              | 05  | 140328960 | NBR FDA OR METRIC 0530-15                |              |
| 06  | 146520100 | MACINA 48X28 IN CERAMICA                 |              | 06  | 146520100 | BAKED CLAY GRINDER 48X28                 |              |
| 07  | 11012466  | BOCC.PROT.DITO CONT.CAFF.GRANI P0057 OTT |              | 07  | 11012466  | BRASS BUSH BEAN CONT.FINGER PROTEC.P0057 |              |
| 08  | 149198350 | SUPPORTO INF.MACINA MACINACAFFE V3 NERO  |              | 08  | 149198350 | LOWER GRINDER SUPPORT COFFEEGRINDER      |              |
| 09  | 123030300 | CUSCINETTO ASSIALE EKKO 342.35252        |              | 09  | 123030300 | AXIAL BEARING EKKO 342.35252             |              |
| 10  | 140360500 | ANELLO IN FELTRO DE=45,4 DI=39,4H=4      |              | 10  | 140360500 | FELT RING 45,4X39,4X4                    |              |
| 11  | 128310402 | ROSETTA UNI 8842 A4 ZINCATA              |              | 11  | 128310402 | GALV.WASHER UNI 8842 A4                  |              |
| 12  | 11026355  | AS.CONVOGL.USCITA CAF.MAC.V4 SMART1 NER. |              | 12  | 11026355  | BLK GROUND COFF.OUTLET CONVEYOR V4 ASSY. |              |
| 13  | 145854462 | GUARNIZ.INF.CONT.CAFFE' MACINATO SMART1  |              | 13  | 145854462 | GROUND COFFEE CONT.SEAL LOWER SMART1     |              |
| 14  | 226000300 | AS.ING.SX Z=38 X MOVIM.MACINA C/CALAMITA |              | 14  | 226000300 | GEAR SX Z=38 FOR GRINDER MOTION ASSY.    |              |
| 15  | 11000513  | AS.MOTORE MC/V3.1 MOD=1,25 SX            | 230V<br>120V | 15  | 11000513  | MOTOR COFFEEGRINDER/V3.1 ASSY            | 230V<br>120V |
| 16  | 11000511  | AS.MOTORE MC/V3.1 MOD=1,25 SX            |              | 16  | 11000511  | MOTOR COFFEEGRINDER/V3.1 ASSY            |              |
| 17  | 149214800 | TAPPO CENTRAG.VITE S/FINE MOD=1,25 MC/V3 |              | 17  | 149214800 | CAP FOR WORM SCREW MC/V3 CENTRING        |              |
| 18  | 129661702 | VITE TCB 3,5X30 PLAST.ZN-B               |              | 18  | 129661702 | SCREW TCB TORX 3,5X30 PLAST.ZN-B         |              |
| 19  | 11002873  | BOCCOL.A ISOLANTE X MOTORE MC P124 NERO  |              | 19  | 11002873  | INSULATOR BUSH FOR GRINDER MOTOR P124    |              |
| 20  | 11000597  | MOLLA DI SUPPORTO MOTORE MC P124 ACC.    |              | 20  | 11000597  | COFFEE GRINDER SUPPORT SPRING P124       |              |
| 21  | 11014285  | PROTEZ.DITO CONT.CAFF.GRANI V2 P0057 NER |              | 21  | 11014285  | BLK V2 BEAN CONTAIN.FINGER PROTECT.P0057 |              |
| 22  | 128381902 | RONDEL.PIANA DI=4,3 DE=14 SP=1,5 AC/ZINC |              | 22  | 128381902 | GALVAN.FLAT WASH.DI=4,3 DE=14 SP=1,5     |              |
| 23  | 149199050 | SUPPORTO SENSORE TERMICO X MOTORE MC     |              | 23  | 149199050 | SENSOR SUPPORT FOR COFF.GRIND.MOTOR      |              |
| 24  | 11000194  | SUPPORTO MOTORE MACINACAFFE' P124 NER.   |              | 24  | 11000194  | BLACK GRINDER MOTOR SUPPORT P124         |              |
| 25  | 181540900 | BAS.ELET.C/SENSORE HAL 506 SF-K C/CONNET |              | 25  | 181540900 | ELECTRONIC BOARD WITH SENSOR HAL506      |              |
| 26  | 123030200 | CUSCINETTO RADIALE 61900.2RS1            |              | 26  | 123030200 | RADIAL BEARING 61900.2RS1                |              |
| 27  | 128381800 | RONDELLA DI BILANCIAMENTO 21,8X14X0,25   |              | 27  | 128381800 | CRINKLE WASHER 21,8X15,8X0,2             |              |
| 28  | 142905450 | CORPO SUP.C/USCITA CAF.MACINATO MC NERO  |              | 28  | 142905450 | UPPER BODY WITH COFFE.GROUND OUTLET      |              |
| 29  | 11008871  | AS.CONNET.3POLI SENSORE/MC S0053 UL      | USA UL       | 29  | 11008871  | 3 POLES CONNECTOR MC SENSOR S0053 UL     | USA UL       |
| 30  | 11002613  | SUPPOR.INF.INGR.REGOL.MACINAT.P124 NER.  |              | 30  | 11002613  | LOWER GEAR SUPPORT COFFEEGRINDER P124    |              |
| 31  | 11002572  | MOLLA REGOLAZIONE MACINACAFFE' P124 ACC. |              | 31  | 11002572  | GRINDER REGULATION SPRING P124           |              |
| 32  | 11003784  | INGRAN.Z=14-24 REGOL.MACIN.CAF.P0049 NER |              | 32  | 11003784  | COFFEE GRINDING ADJUSTMENT GEAR P0049    |              |
| 33  | U043.004  | VITE TCB M4X16 ZN-B                      |              | 33  | U043.004  | ZN-B TCB SCREW M4X16                     |              |
| 34  | 11002508  | SUPPOR.SUP.INGR.REGOL.MACINAT.P124 NER.  |              | 34  | 11002508  | UPPER GEAR SUPPORT COFFEEGRINDER P124    |              |
| 35  | 129914002 | VITE TCB 3,5X16 PLAST.ZN-B               |              | 35  | 129914002 | SCREW TCB TORX 10 3,5X16 PLAST.ZN-B      |              |
|     | 11022841  | PROTEZ.DITO CONT.CAFF.GRANI XSM TRASP.   |              |     | 11022841  | TRANS.BEAN CONTAIN.FINGER PROTECT.XSM    |              |
|     | 11008869  | AS.CONN.2P.MOTORE MACINACAF.S0053        |              |     | 11008869  | 2POLES CONNECTOR GRINDER MOTOR S0053     |              |
|     | 11006059  | AS.GEN.MOTORE MC P0057 STD               | 230V<br>120V |     | 11006059  | MC GENERAL MOTOR P0057 STD ASSY.         | 230V<br>120V |
|     | 11024242  | AS.GEN.MOTORE MC V3 P0057                |              |     | 11024242  | MC GENERAL MOTOR V3 P0057 ASSY.          |              |





SUP037R RI9833/11-RI9833/12-RI9833/41-RI9833/43-RI9833/47

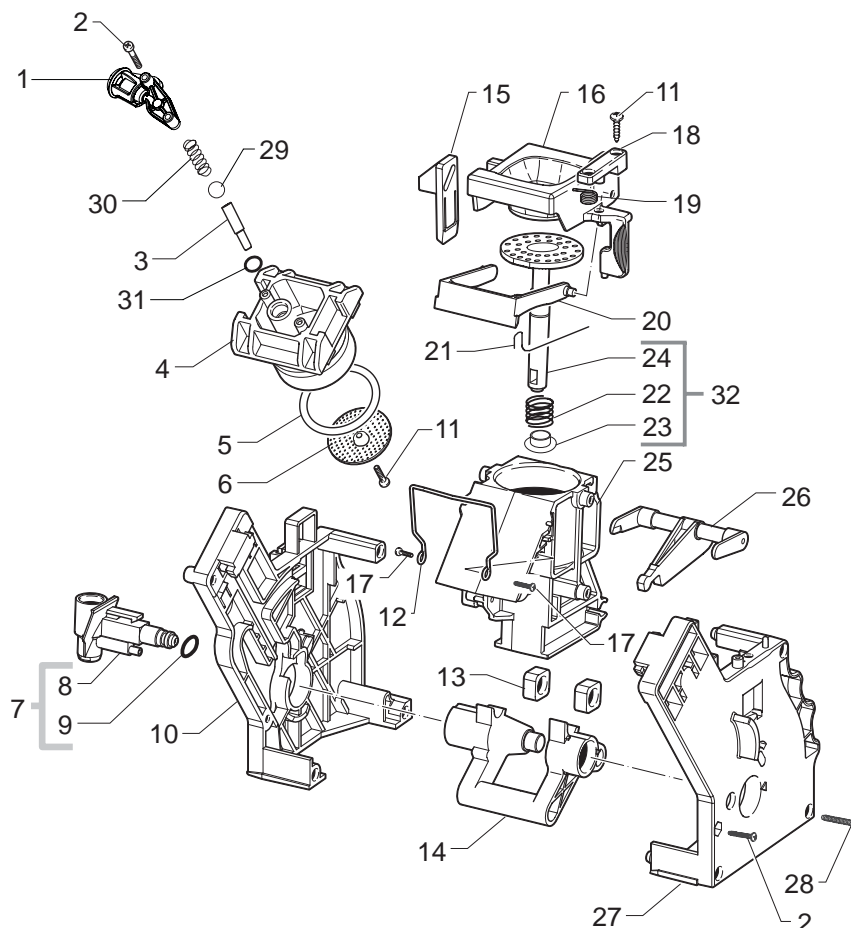


Cod. 10003124-10003350-54-55-  
Cod. 10003480-10003637-10003724-25

| POS | CODICE    | DESCRIZIONE  | NOTE | POS | CODE      | DESCRIPTION   | NOTE |
|-----|-----------|--|------|-----|-----------|---|------|
| 01  | 11006067  | AS.PIASTRA MONTAGGIO MOTORI.P0057 NERO   |      | 01  | 11006067  | BLACK RATIOMOTOR MOUNTING PLATE P0057 AS                        |      |
| 02  | NE05.038  | MICROINTERRUTTORE  |      | 02  | NE05.038  | MICROSWITCH   |      |
| 03  | 20000900  | KIT RICAMBI INGRANAGGI MOTORIDUTTORE V2  |      | 03  | 20000900  | SPARES KIT GEARS FOR RATIOMOTOR V2                              |      |
| 04  | 9161.132  | RONDELLA MYLAR X MOTORIDUTTORE   |      | 04  | 9161.132  | MYLAR WASHER FOR RATIOMOTOR                                     |      |
| 05  | 11003037  | AS.MOTORE X MOTORIDUTTORE C/CONDENS.   |      | 05  | 11003037  | MOTOR FOR RATIOMOTOR ASSY.                                      |      |
| 06  | 9121.046  | BOCCOLA SINTERIZZATA X MOTORE  |      | 06  | 9121.046  | SINTERED BUSH FOR MOTOR   |      |
| 07  | 148380200 | RONDELLA TELA BAKELIZZATA D=5,5  |      | 07  | 148380200 | WASHER BAKELIZZATE D=5,5  |      |
| 08  | 9121.044  | ANTIVIBRANTE X MOTORE  |      | 08  | 9121.044  | ANTIVIBRATION FOR MOTOR   |      |
| 09  | 11003754  | COPERTURA PIASTRA MONTAGGIO P0057 NER.   |      | 09  | 11003754  | BLACK COVER FOR MOUNTING PLATE P0057                            |      |
| 10  | 12000450  | VITE TCBR 3,5X12 PLAST.ZN-N  |      | 10  | 12000450  | SCREW TCBR TORX 10 3,5X12 PLAST.ZN-N                            |      |
| 11  | 11013531  | AS.PERNO RUB.REGOL.FLUS.ACQ/VAP.V2 P0057   |      | 11  | 11013531  | PIN FOR FLOW SELECTOR FAUCET P0057 ASSY.                        |      |
| 12  | 11013530  | PERNO RUB.REGOL.FLUSSO ACQ/VAP.V2 P0057  |      | 12  | 11013530  | V2 PIN FOR FLOW SELECTOR FAUCET P0057                           |      |
| 13  | NM01.035  | OR ORM 0090-20 SILICONE  |      | 13  | NM01.035  | OR ORM 0090-20 SILICONE   |      |
| 14  | NM01.057  | OR ORM 0050-20 SILICONE  |      | 14  | NM01.057  | OR ORM 0050-20 SILICONE   |      |
| 15  | NE05.013  | MICROINTERRUTTORE  |      | 15  | NE05.013  | MICROSWITCH   |      |
| 16  | 11013205  | GUARNIZ.PIASTRA MOTORE MOTORID.XSM NER.  |      | 16  | 11013205  | SEAL FOR RATIOMOTOR PLATE XSM                                   |      |
| 17  | 11012382  | GRUPPO CAFFE' 8GR.5BAR S0053 NERO<br>VEDI COD. ESPLOSO E90067 PAGINA<br>SUCCESSIVA |      | 17  | 11012382  | BLACK BREW UNIT 8GR.5BAR P0057<br>SEE EXP.CODE E90067 NEXT PAGE |      |







| POS | CODE         | DESCRIPTION                              | NOTE             | POS | CODE | DESCRIPTION | NOTE |
|-----|--------------|--|------------------|-----|------|-------------|------|
| 01  | 11009362     | BLACK COFFEE OUTLET SLEEVE S0053 ASSY.   |                  |     |      |             |      |
| 02  | 12000550     | SCREW TCB TORX 10 3X25 PLAST.SS          |                  |     |      |             |      |
| 03  | 11009276     | TUBE FOR COUNTER PISTON BREW UNIT S0053  |                  |     |      |             |      |
| 04  | 11001840     | BLACK COUNTER PISTON BREW UNIT 8GR.P124  |                  |     |      |             |      |
| 05  | NM01.044     | OR ORM 0320-40 SILICONE PTFE/FDA         |                  |     |      |             |      |
| 06  | 9161.268     | PERCOLATOR DE=35,8 ELFO                  |                  |     |      |             |      |
| 07  | 20000440     | BLACK SPARE SLEEVE UNIT                  |                  |     |      |             |      |
| 08  | 9161.064.050 | BLACK WATER INLET SLEEVE BREW UNIT       |                  |     |      |             |      |
| 09  | NM02.007     | OR 2025 TERMOIL                          |                  |     |      |             |      |
| 10  | 9161.375.050 | BLACK REAR PLATE FOR BREW UNIT SMART     |                  |     |      |             |      |
| 11  | 12000895     | SCREW TSP TORX 10 3X10 PLAST.SS          |                  |     |      |             |      |
| 12  | 11001556     | SPRING H=49 FOR COFFEE BREW UNIT SMART   |                  |     |      |             |      |
| 13  | 9161.094.150 | GREY DRILLED BLOCK BREW UNIT             |                  |     |      |             |      |
| 14  | 9161.066.050 | ELBOW SHAFT FOR UNIT BLACK               |                  |     |      |             |      |
| 15  | 9161.373.050 | BLACK COUPLING PLATE BREW UNIT SMART     |                  |     |      |             |      |
| 16  | 149261350    | BLACK HOPPER DOSER BREW UNIT SMART1      |                  |     |      |             |      |
| 17  | 129912521    | SCREW TCB TORX 10 3,5X14 PLAST.SS        |                  |     |      |             |      |
| 18  | 9161.374.050 | BLACK HOPPER BLOCKING PLATE UNIT SMART   |                  |     |      |             |      |
| 19  | 9161.378     | SPRING HOPPER SMART BREW UNIT            |                  |     |      |             |      |
| 20  | 11004161     | BLACK SCRAPER FOR COFFEE UNIT            |                  |     |      |             |      |
| 21  | 9161.046     | SPRING FOR UNIT SCRAPER                  |                  |     |      |             |      |
| 22  | 9161.198     | PISTON SPRING BREW UNIT M5000            |                  |     |      |             |      |
| 23  | 9161.191     | NEUTRAL PISTON BUSH BREW UNIT M5000      |                  |     |      |             |      |
| 24  | 11003077     | BLACK INTEGRAL PISTON UNIT P124 8GR.ASS  |                  |     |      |             |      |
| 25  | 11003075     | BLACK COFFEE CONTAINER BREW UNIT P124    | WITH PART. N° 12 |     |      |             |      |
| 26  | 11003078     | BLACK CONNECTING ROD FOR UNIT P124 8GR.  |                  |     |      |             |      |
| 27  | 11005920     | BLACK FRONT PLATE BREW UNIT SMART S.SCR. |                  |     |      |             |      |
| 28  | 12000897     | SCREW TCB TORX 10 3,5X20 PLAST.SS        |                  |     |      |             |      |
| 29  | 9991.168     | GLASS SPHERE D.5MM                       |                  |     |      |             |      |
| 30  | 11012095     | SPRING FOR COUNTERPISTON UNIT S0053      |                  |     |      |             |      |
| 31  | 140328761    | OR METRIC 0060-15 IN TERMOIL             |                  |     |      |             |      |
| 32  | 11023086     | BLK 8GR.BREW UNIT NTEGR.PISTON GEN.ASSY. |                  |     |      |             |      |
|     | 11012382     | BLACK BREW UNIT 8 GR.5 BAR S0053         |                  |     |      |             |      |