



Philips Consumer Lifestyle

# ServiceManual

## PRODUCT INFORMATION

- This product meets the requirements regarding interference suppression on radio and TV.
- After the product has been repaired, it should function properly and has to meet the safety requirements as officially laid down at this moment.

## TECHNICAL INFORMATION

- Charger AC / DC : 9V DC - 200 mA
- Rechargeable batteries : 4x NiMH - 1500 mAh
- Run time : 58 min.
- Charge indicator : LED

### Charge indication

- Charging : Green LED lights up during charging

## REPAIR INSTRUCTIONS

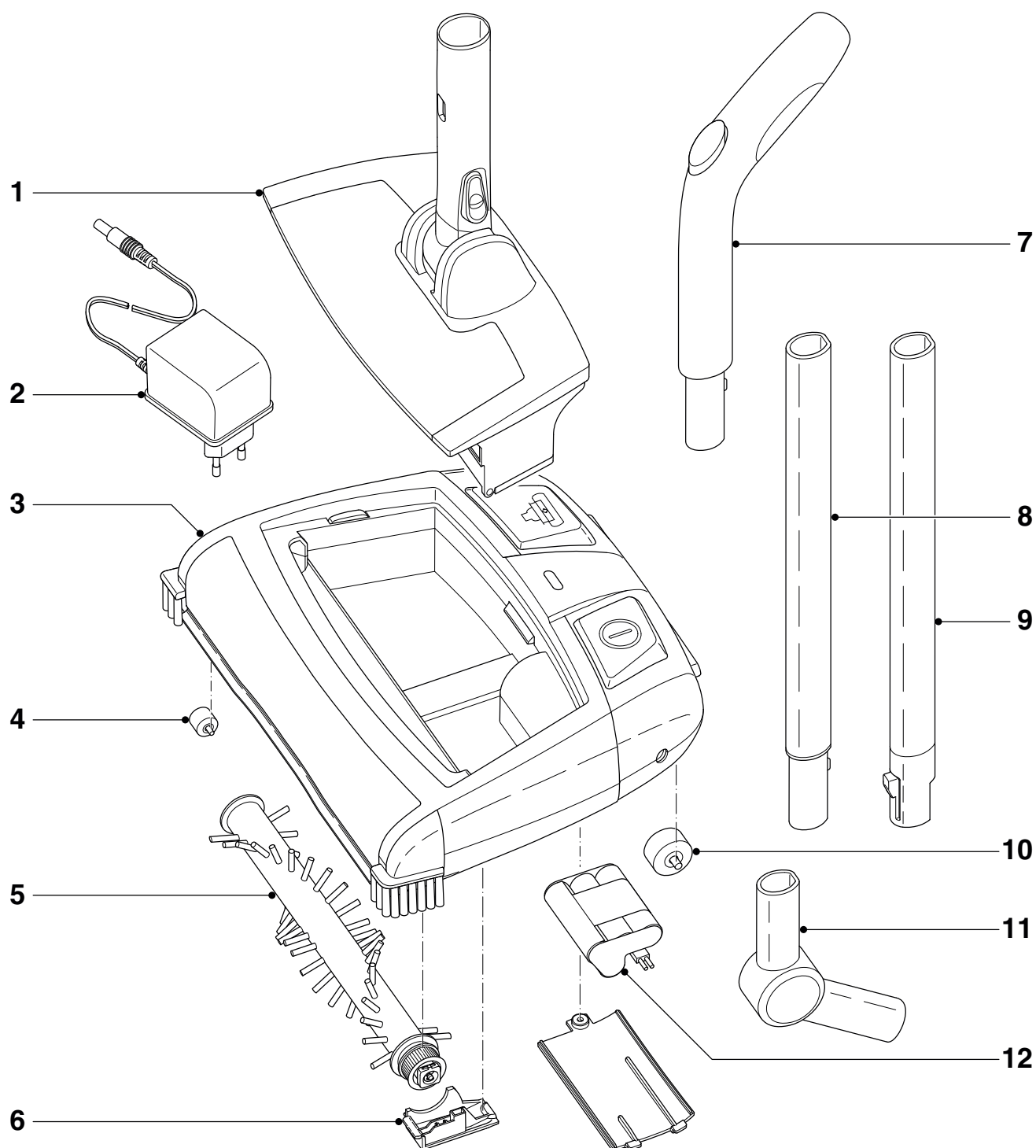
- No specific issues

## ASSEMBLY & DISASSEMBLY ADVICE

- No specific issues

## OPTIONAL (accessories)

- No specific issues



Pos	Service code	Description
1	4222 459 45347	Complete dirt tray
2	9965 000 32145	Charger WE
	9965 000 37498	Charger Brazil 127 V
	9965 000 38116	Charger PRC
	9965 000 38117	Charger UK/Hongkong
	4222 459 45688	Charger Taiwan 110 V
	4222 459 45689	Charger Argentina 220 V
3	4222 459 45564	Complete sweeper base
4	9965 000 32148	Front wheels kit
5	9965 000 32150	Roller brush *

Pos	Service code	Description
6	9965 000 32151	Retainer *
7	4222 459 45567	Handle assy
8	4222 459 45565	Upper tube assy
	4222 459 45566	Upper tube assy short Asia
9	4222 459 45351	Lower tube assy
	4222 459 45419	Lower tube assy short Asia
10	9965 000 32155	Rear wheels kit
11	4222 459 45350	Tube hinge assy
12	4222 459 45563	Battery pack 1500 mAh NiMH (AA-size)

\* Standardized colour