

Service
Service
Service



Philips Consumer Lifestyle

Service Manual

PRODUCT INFORMATION

- This product meets the requirements regarding interference suppression on radio and TV.
- After the product has been repaired, it should function properly and has to meet the safety requirements as officially laid down at this moment.

TECHNICAL INFORMATION

- Adapter AC / AC : 7V AC - 400 mA
- Rechargeable batteries : 4 x NiMH - 1500 mAh
- Run time : 8 min.
- Charging time : 16-18 hours
- Charge indicator : LED
- Charging base : Standing, also wall mountable, incl. accessory storage
- Accessories : Crevice, brush and Squeeze
- Application environment : Wet & Dry
- Filter : Single, washable
- Dust chamber Dry : 400 ml
- Dust chamber Wet : 130 ml

REPAIR INSTRUCTIONS

- No specific issues

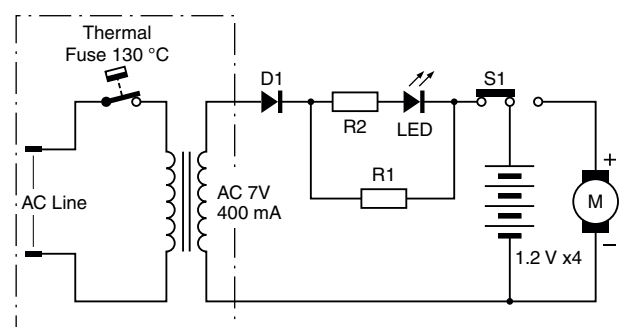
ASSEMBLY & DISASSEMBLY ADVICE

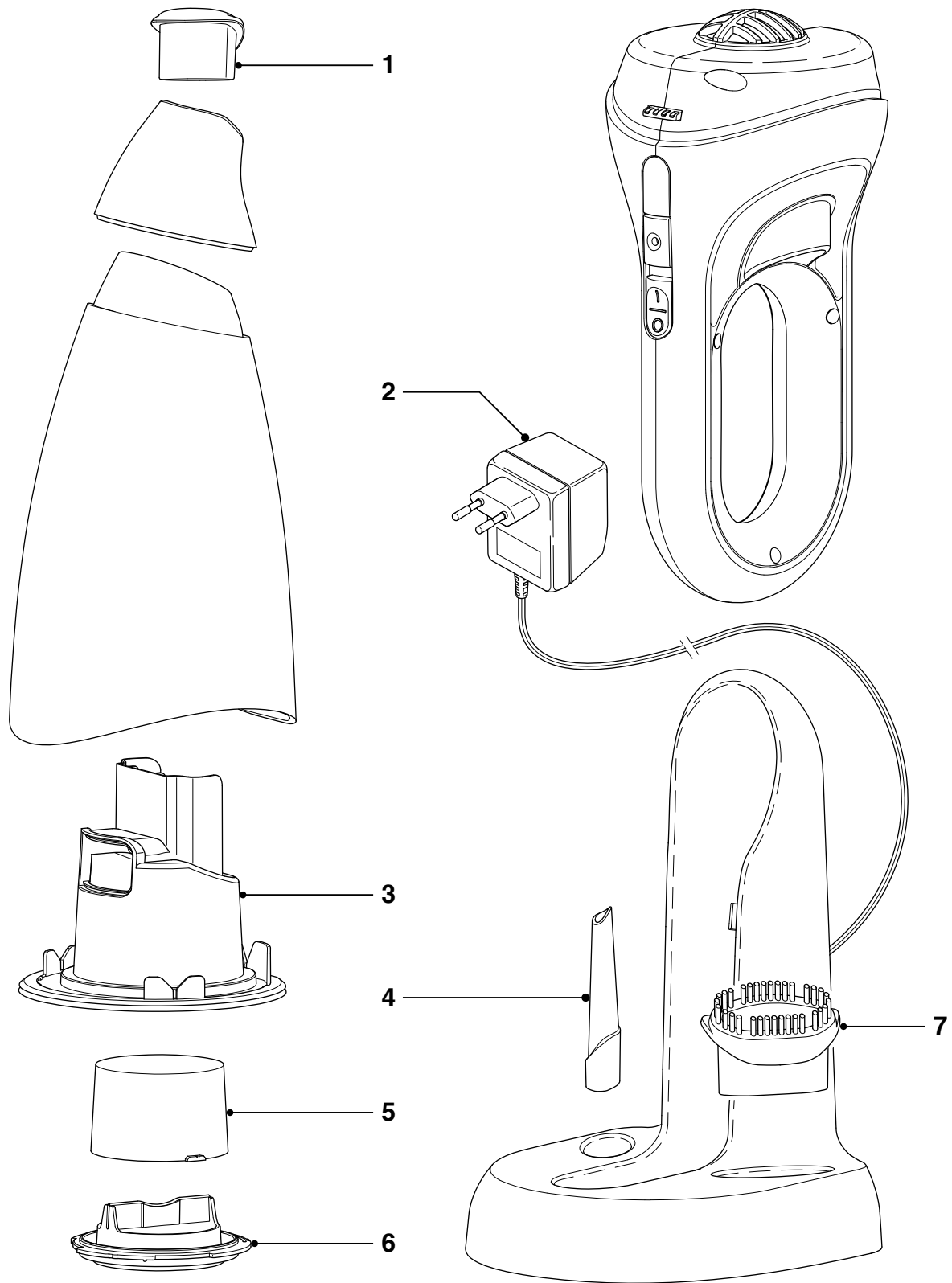
- No specific issues

OPTIONAL (accessories)

- No specific issues

Electrical diagram





Pos	Service code	Description
1	4222 459 45079	Squeeze
2	4222 459 45694	Adapter UK/HK
	4222 459 45692	Adapter Taiwan
	9965 000 06428	Adapter Korea
	4222 459 45693	Adapter Argentina
	4222 459 45701	Adapter PRC
	4322 006 00171	Adapter WEU

Pos	Service code	Description
3	4222 459 45080	Deflector
4	4222 459 45075	Crevice Nozzle
5	9965 000 25379	Inner filter
6	4222 459 45081	Filter holder
7	4222 459 45076	Brush nozzle

Version history

Version 1.1 : FC6142 initial release.

Version 1.2 : In Parts List: Added Pos. 2: 4322 006 00171 Adapter WEU