

Service
Service
Service



Philips Consumer Lifestyle

Service Manual

PRODUCT INFORMATION

- This product meets the requirements regarding interference suppression on radio and TV.
- After the product has been repaired, it should function properly and has to meet the safety requirements as officially laid down at this moment.

TECHNICAL INFORMATION

- Adapter AC / DC : 230 V / 9V DC - 300 mA
- Rechargeable batteries : 6 x NiMH - 1500 mAh
- Run time : 8 min.
- Charging time : 16-18 hours
- Charge indicator : LED
- Charging base : Standing, also wall mountable, incl. accessory storage
- Air flow system : Cyclonic action
- Accessories : Crevice and brush
- Application environment : Dry
- Filter : 2-stage type, washable
- Dust capacity : 430 ml

REPAIR INSTRUCTIONS

- No specific issues

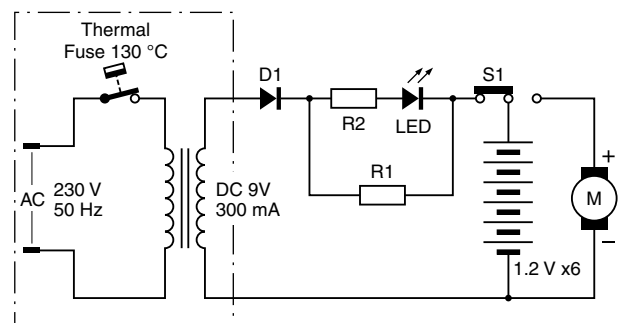
ASSEMBLY & DISASSEMBLY ADVICE

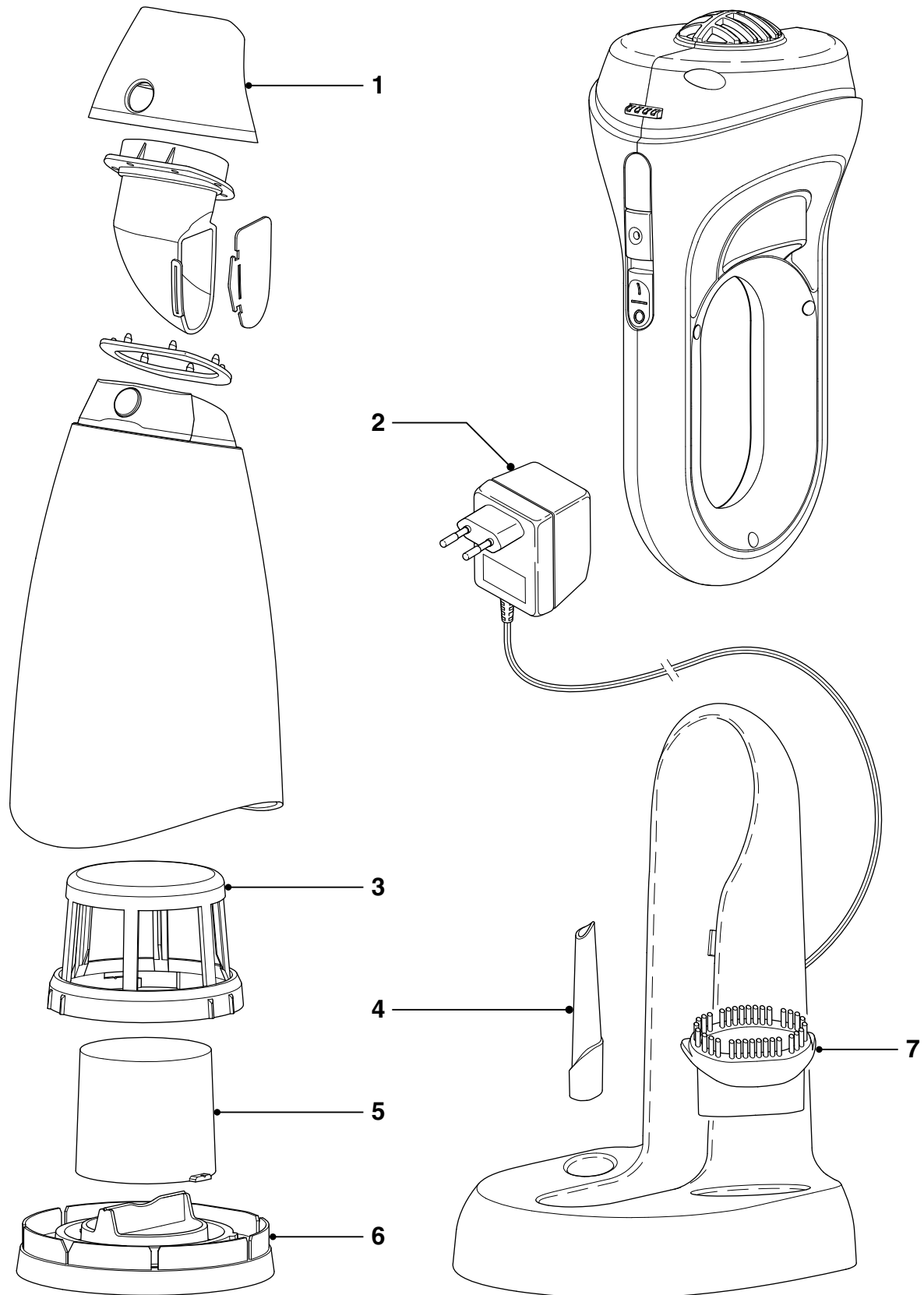
- No specific issues

OPTIONAL (accessories)

- No specific issues

Electrical diagram





Pos	Service code	Description
1	4222 459 45078	Nose piece
2	4222 459 45695	Adapter
2	9965 100 75714	Adaptor + Charging assy
3	9965 000 23217	Outer filter white *

Pos	Service code	Description
4	4222 459 45075	Crevice Nozzle
5	8838 035 01010	Inner filter
6	4222 459 45077	Filter holder white *
7	4222 459 45076	Brush nozzle

* Standardized colour

Version history

09/02 Version 1.1 : FC6144 initial release.

16/07 Version 1.2 : In Parts List: Added Pos. 2: 9965 100 75714 Adaptor + Charging assy EU