

Service Service Service



Philips Consumer Lifestyle

Service Manual

PRODUCT INFORMATION

Safety

- This product meets the requirements regarding interference suppression on radio and TV.
- After the product has been repaired, it should function properly and has to meet the safety requirements as officially laid down at this moment.

DISASSEMBLY- AND RE-ASSEMBLY ADVISE

- To replace the brush from the Nozzle:
Turn the appliance, open the brush cover, take the brush out by moving from left to right and replace the brush in opposite direction. Close the brush cover, a clear <click> need to be heard.

REPAIR INSTRUCTION

- No specific issues

OPTIONAL (accessories)

- No specific issues

TECHNICAL INFORMATION

- Colour : Sparkle Red

Performance

- Battery type : NiMH
- Runtime : 20 minute(s)
- Charging time : 16 hour(s)
- Noise level (Lc IEC) : 80 dB
- Battery voltage : 12 V

Filtration

- Dust capacity : 0.6 l
- Filter : Permanent washable

Nozzles and accessories

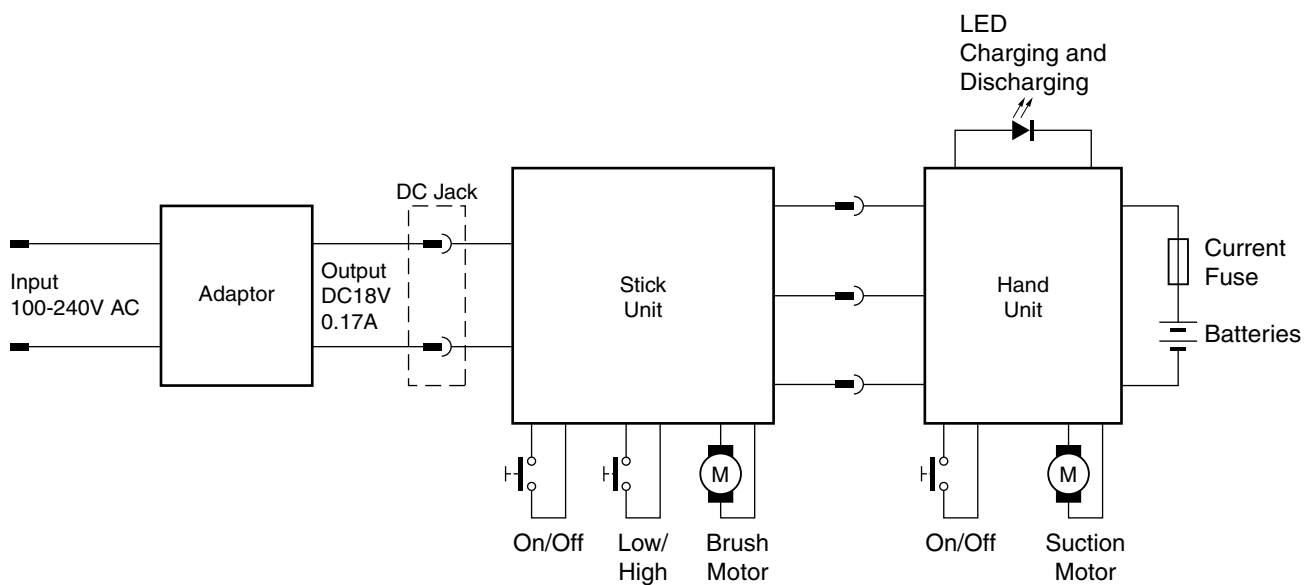
- Standard nozzle : TriActive Turbo Nozzle
- Accessories : Brush, Crevice tool
- Accessory storage : On tube

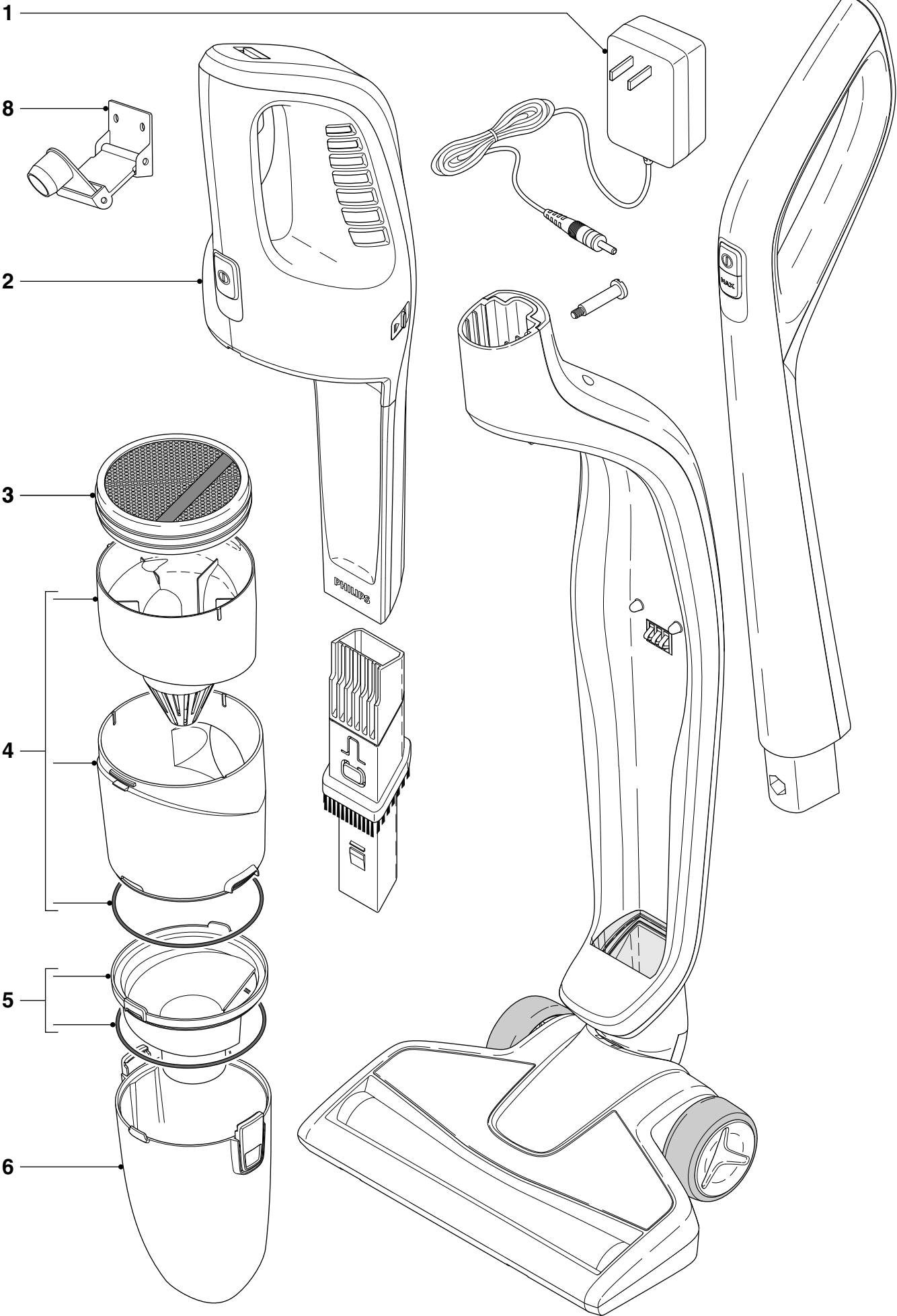
Weight and dimensions

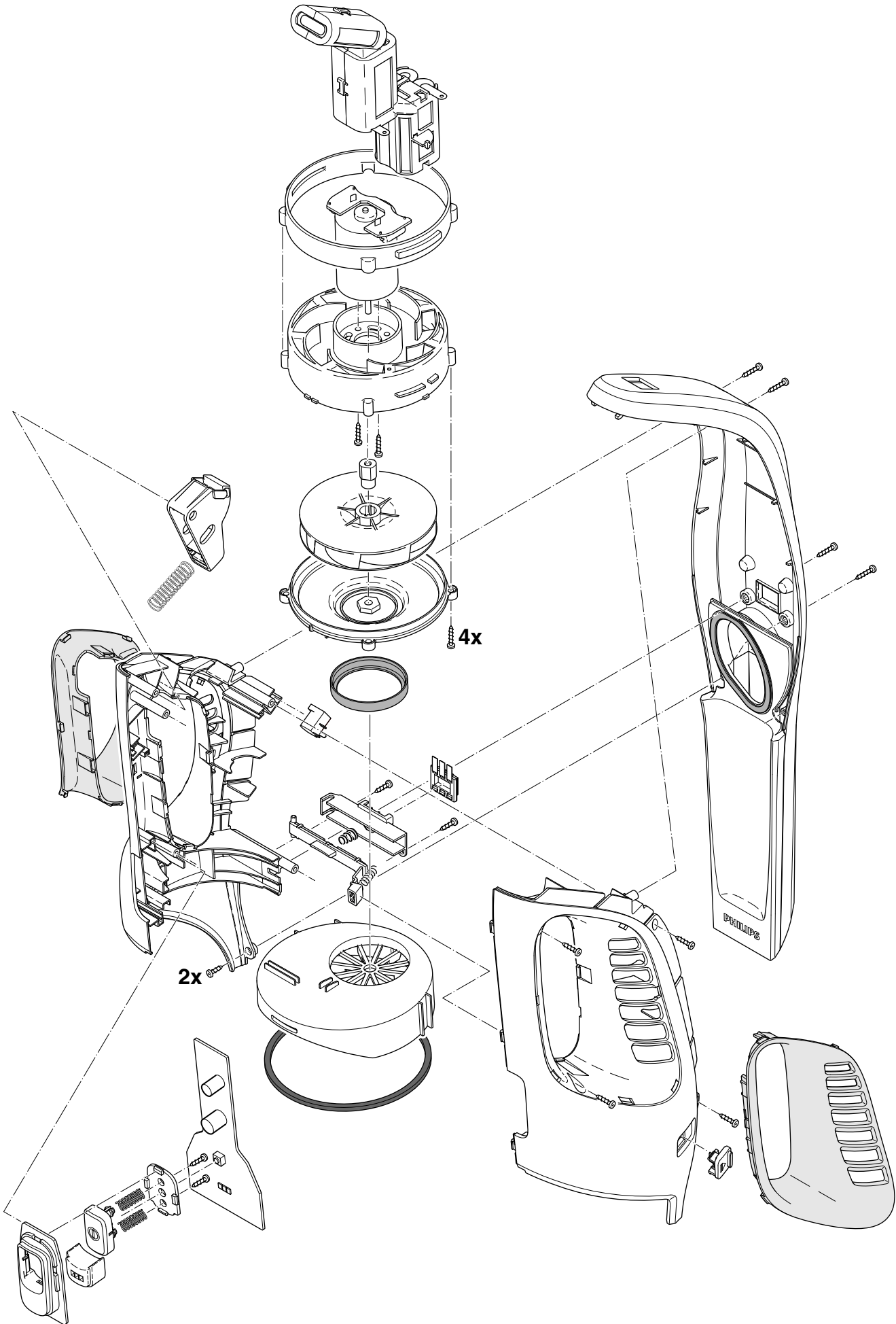
- Weight of product : 2.8 kg
- Dimensions (H x W x D) : 115 cm x 25 cm x 23 cm

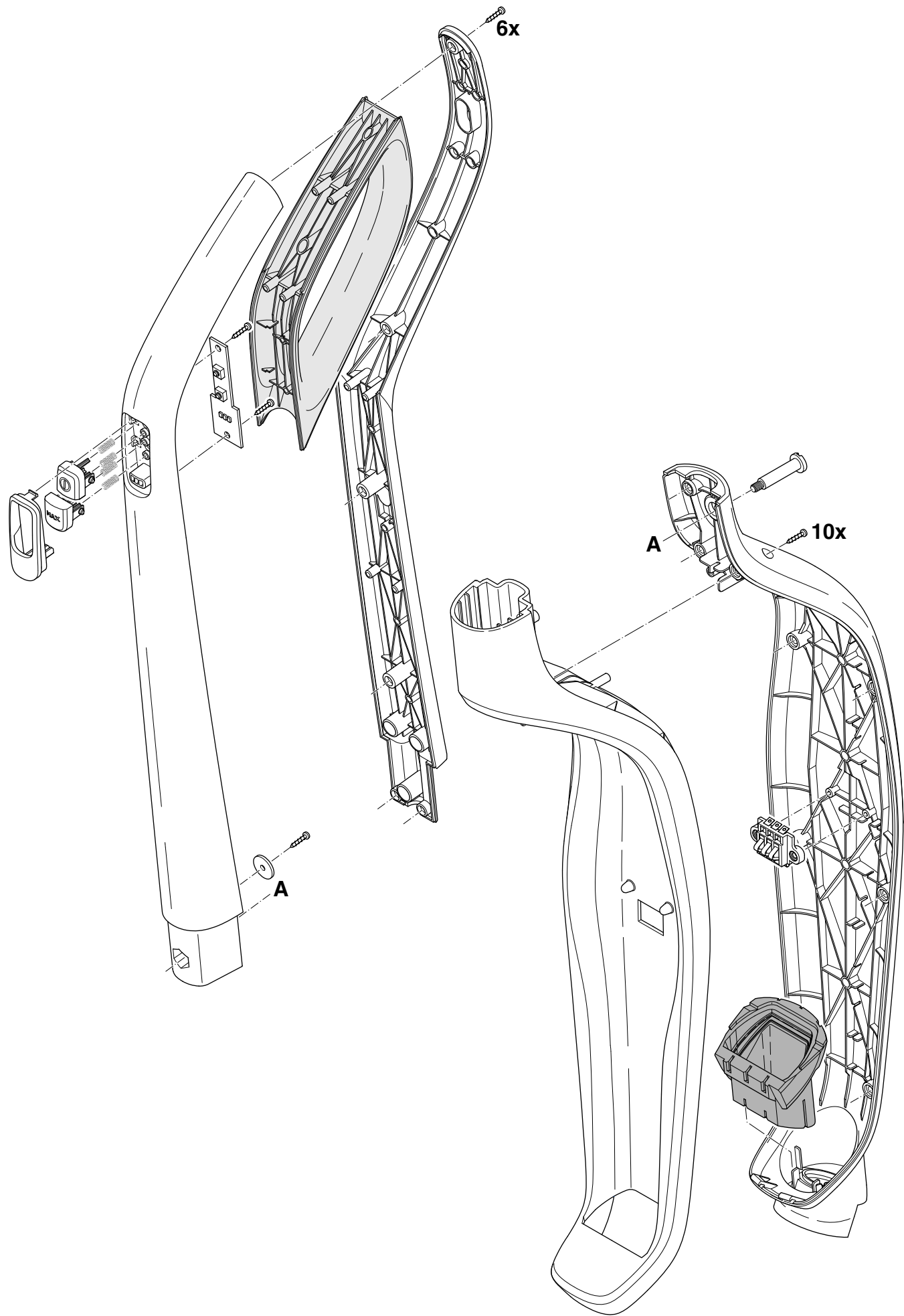
Pos	Service code	Description	Remark
1	4322 006 24311	Adaptor	
2	9965 100 70127	Complete Handheld	Sparkle Red
3	4322 004 94361	Freudenberg filter	Hawaii
4	4322 005 35601	Cyclone assy	
5	4322 005 35591	Dust separator assy	
6	4322 005 35581	Dustbin assy	
7	4322 004 94011	Brush	
8	4322 005 35611	Wall mount assy	
9	9965 100 74933	Set of 2 small wheels	

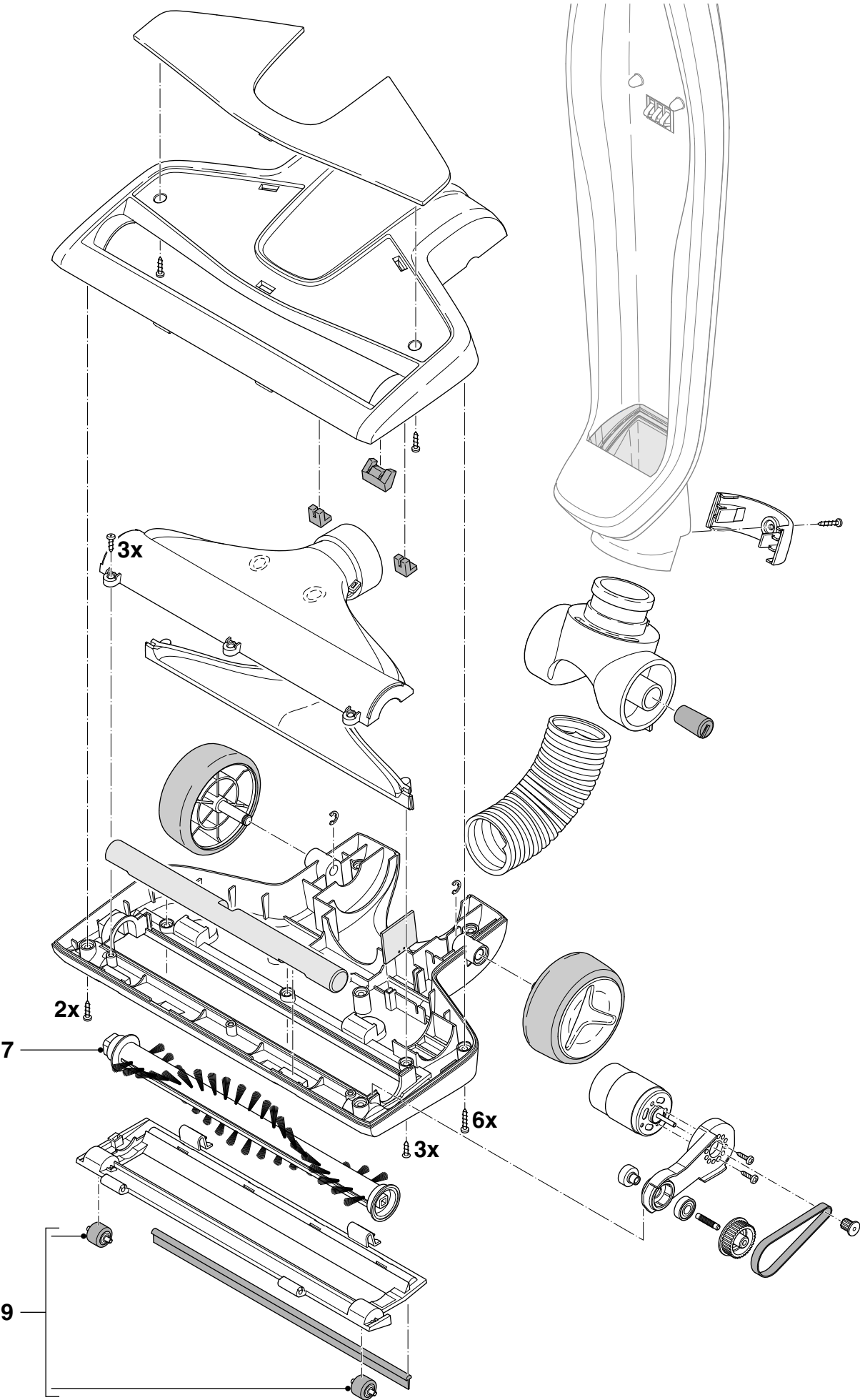
CIRCUIT DIAGRAM











Version history

Version 1.1 : FC6162/02 initial release.

Version 1.2 : In Parts List and Exploded view: Changed Pos. 3, 4322 004 94001 Filter into
4322 004 94361 Freudenberg filter Hawaii

Version 1.3 : In Parts List and Exploded view: Added Pos. 8, 4322 005 35611 Wall mount assy

Version 1.4 : In Parts List and Exploded view: Added Pos. 9, 9965 100 74933 Set of 2 small wheels.