



**FC7020/01**  
**FC7020/31**  
**FC7020/51**  
**FC7020/61**  
**FC7020/71**  
**FC7020/81**

Philips Consumer Lifestyle

# Service Manual

## PRODUCT INFORMATION

### Safety

- This product meets the requirements regarding interference suppression on radio and TV.
- After the product has been repaired, it should function properly and has to meet the safety requirements as officially laid down at this moment.

## TECHNICAL INFORMATION

- Colour : Star white and resilient blue

### Design features

- Dust chamber and watertank : Translucent

### Performance

- Power consumption : 1500 W
- Noise level (Lc IEC) : <75 dB
- Input power (max) : 1500 W

### Steam Management

- Heating-up time : <30 s
- Runtime (steaming) : 20 min
- Steam capacity : 20 g/min
- Steam temp. at nozzle : >100 °C
- Watertank size : 450 ml

### Usability

- Adjustable telescopic stick : 100 - 120 cm
- Cord length : 6 m
- Removable stick assembly : From body (with a screw)
- Stand by mode : Auto steam shut-off

### Weight and dimensions

- Dimensions microfiber pad : 27 x 11 cm
- Dimensions nozzle : 28 x 18 x 4.5 cm
- Dimensions appliance : 16 x 32 x 112 cm
- Weight (kg) : <3 kg

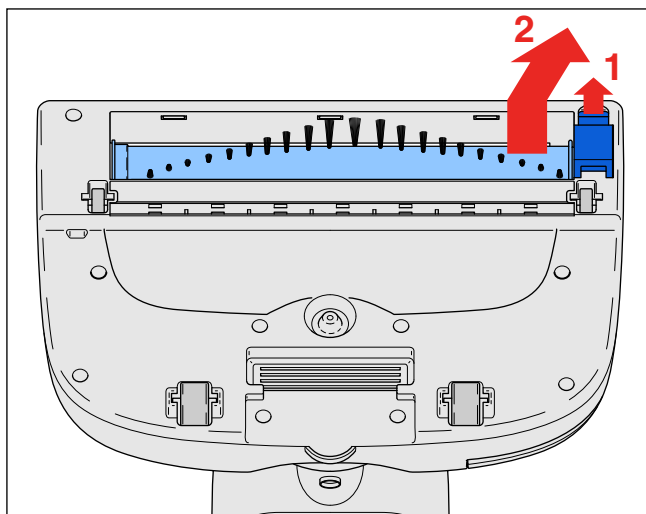
## ACCESSORIES

- 1 parking pad
- Cleaning : 2 microfiber pads, Fast rotating brush

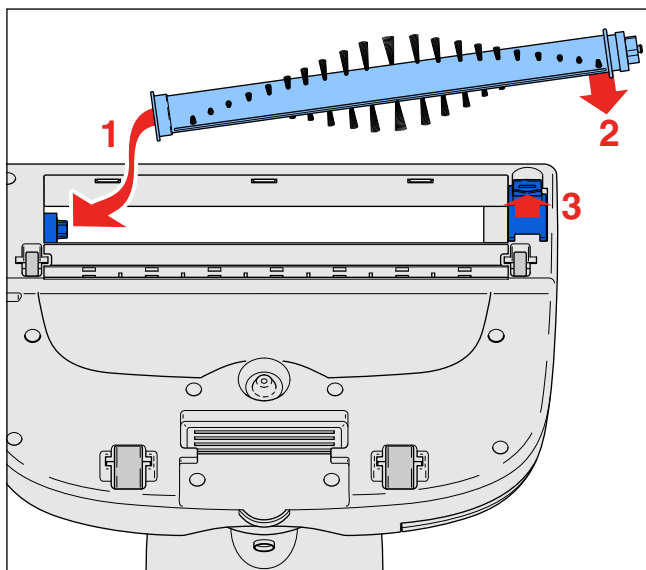
### OPTIONAL (accessories)

- FC8056 : 2 microfiber pads and 1 filter assy

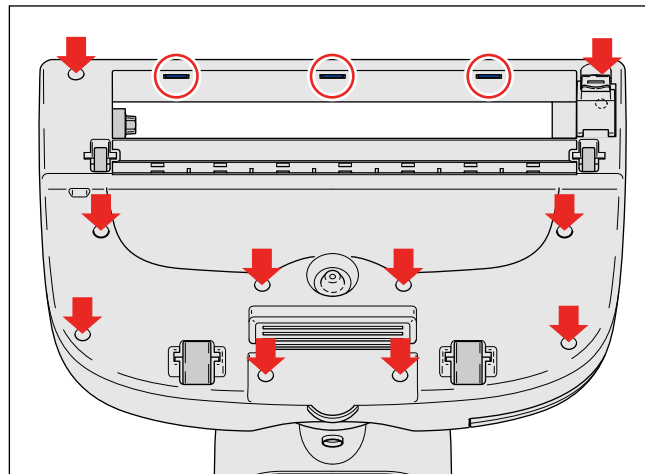
- To replace the Rotating Brush (14) of the nozzle:  
Turn the appliance upside down, open the Roller Brush cover (18) by lifting it. Take the brush out by lifting it on the right side and moving it out sideways to the right.



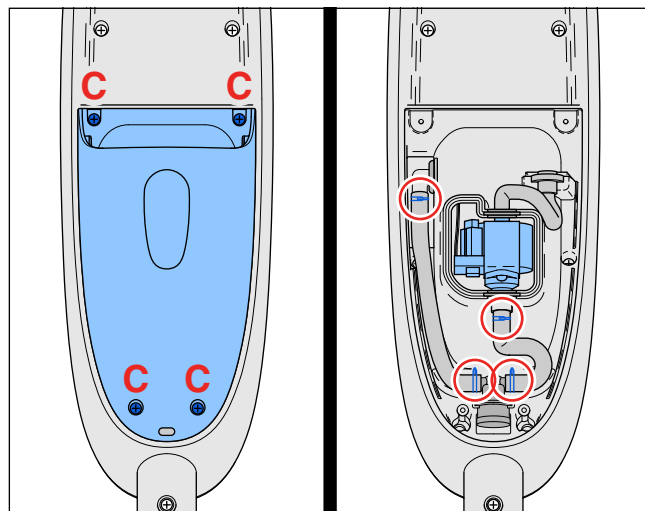
- To place the Brush, position the Brush over the Roller Holder Assy (13) then “click” the Brush into place at the Roller Brush cover and close the Roller Brush cover.



- To replace the Brush Motor (15), Driving belt (12) and Roller Holder Assy (13):  
Remove the 10 screws (D) on the bottom of the Nozzle and push the 3 clickknocks on the front side with a screwdriver, now the components can be reached.



- To replace the pump (10):  
First remove the Water Tank (3) and Filter Assy (4). Remove the 4 screws (C), and remove the cover. Now the pump is visible. Remove the clips from the hoses and the valve and replace the pump.



#### Remark:

- You can use the delivered Pin (5) in the small plastic bag for “unclogging” the little hole on the bottomside of the Nozzle in case some calcium is present in the hole.

## REPAIR INSTRUCTION

**FC7020/01 /31 /51 /61 /71 /81**

- If the Cordset needs to be repaired, in the repair centers you need to add a connection box yourself.
- Because from wk. 1347 onwards the connection box has been replaced by a plastic cap, see pictures.

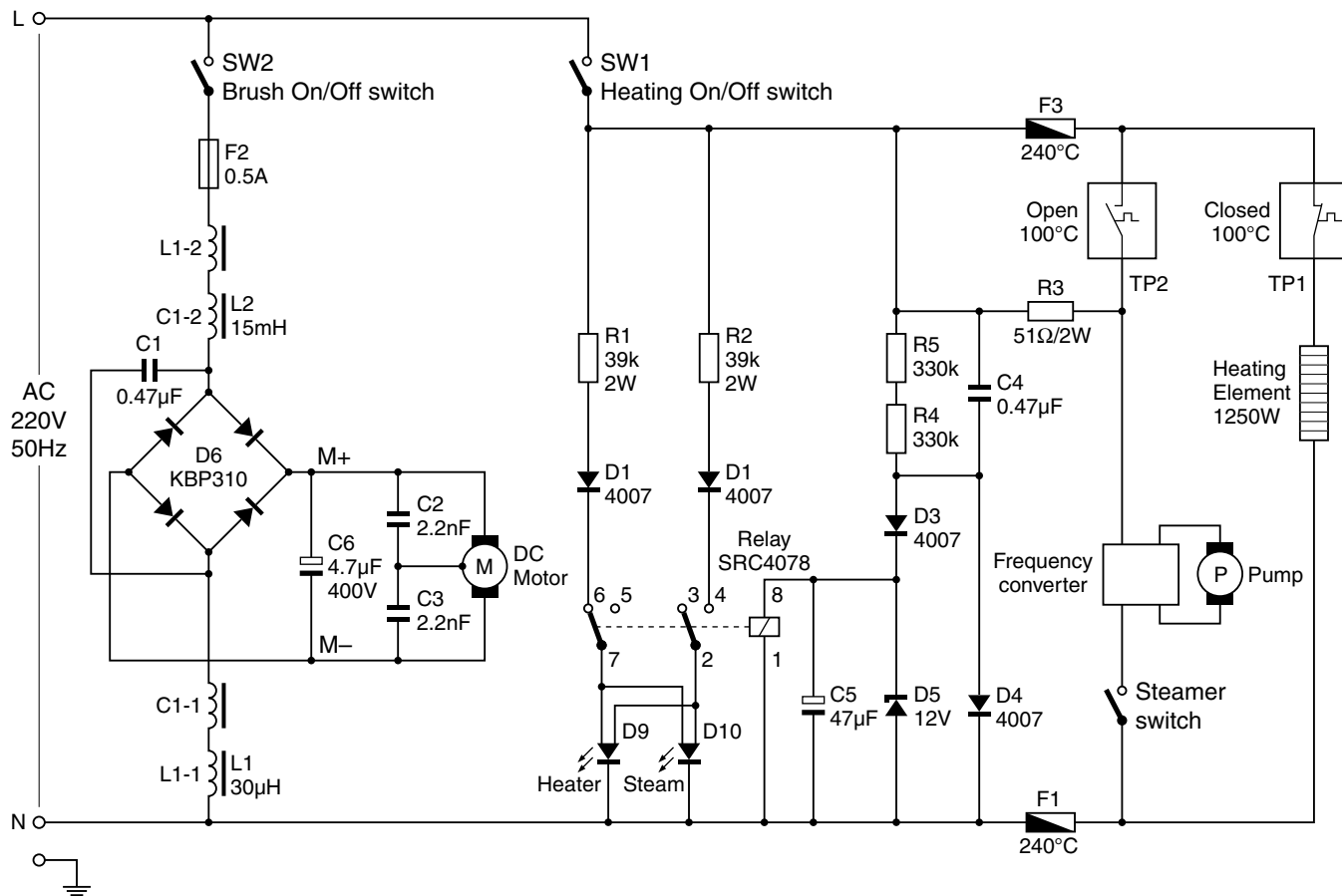
**Old situation:**



**New situation:**

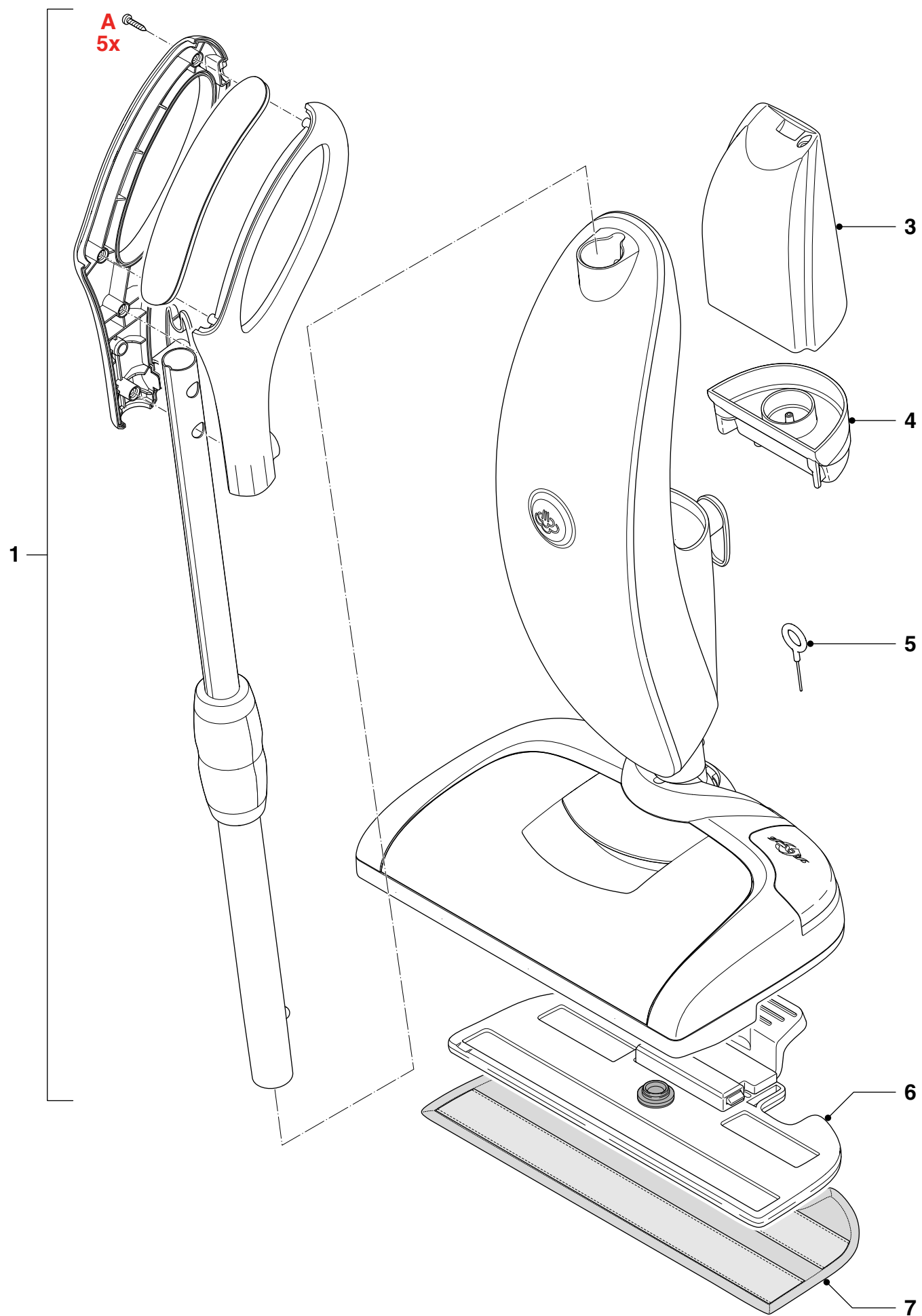


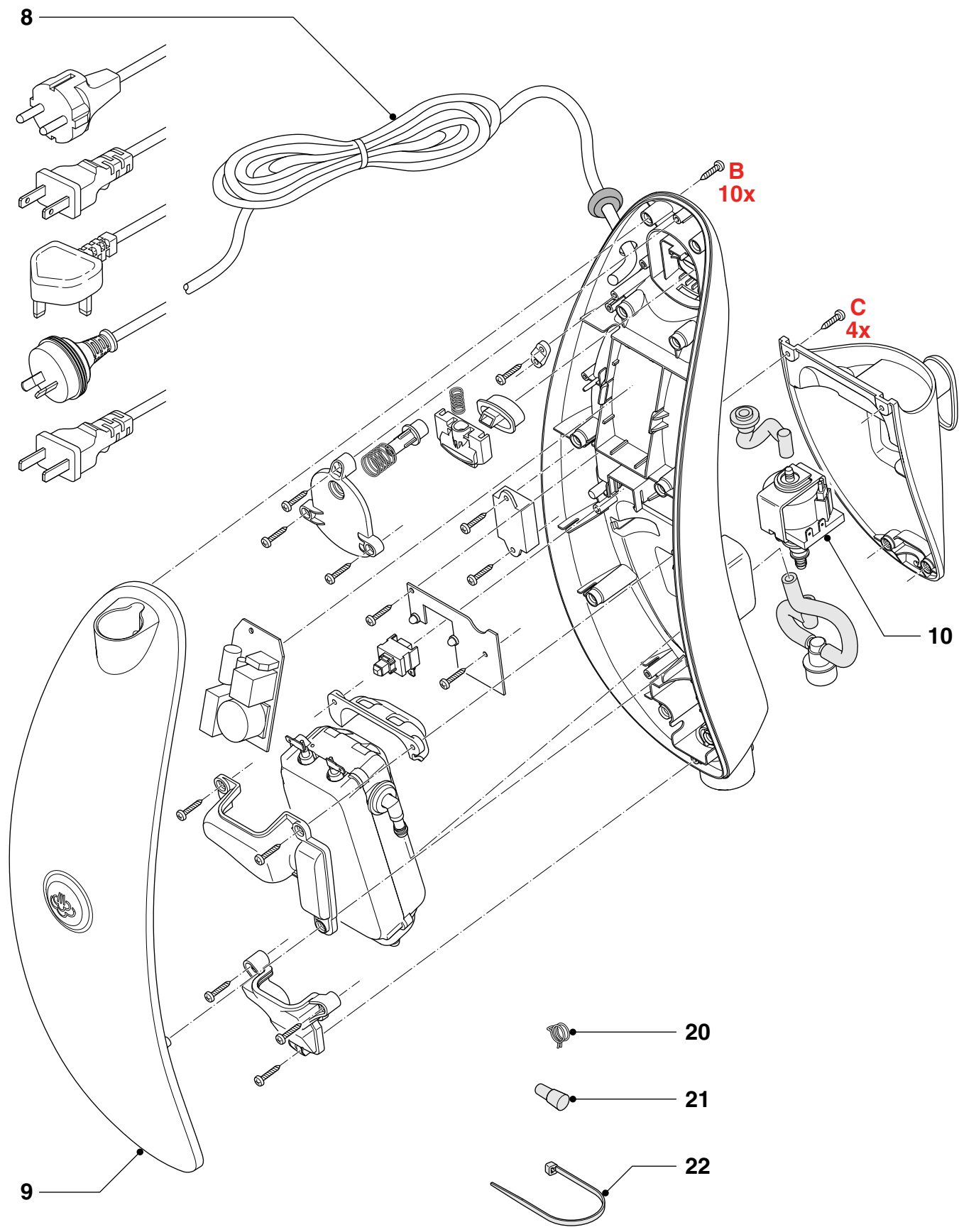
## CIRCUIT DIAGRAM

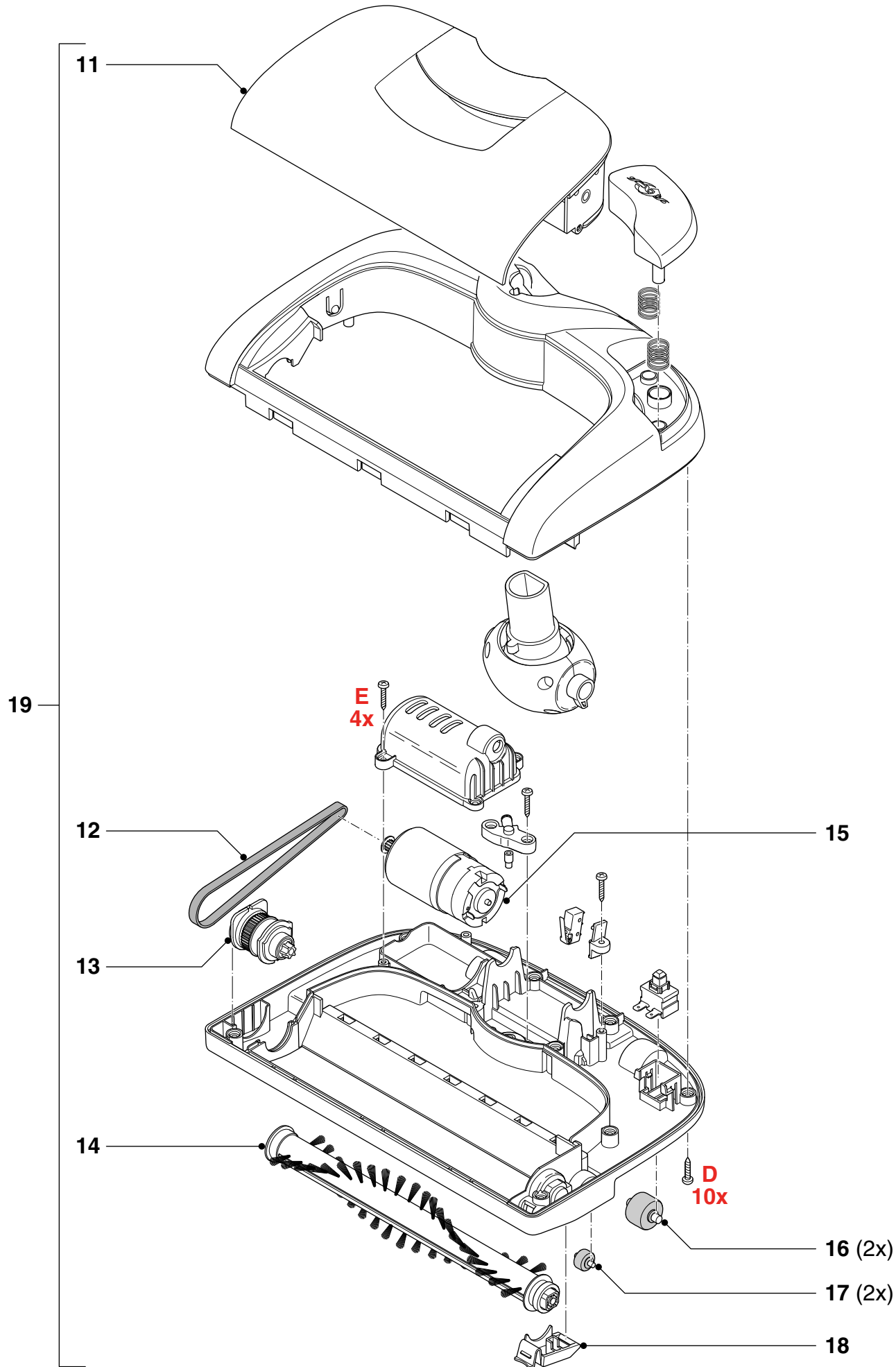


**PARTS LIST**
**FC7020/01 /31 /51 /61 /71 /81**

Pos	Service code	Description	Remark
1	9965 100 65711	Telescopic tube assy	
3	9965 100 60777	Water tank	
4	4322 004 93841	D.Calc filter	
5	9965 100 60767	Pin for decalcification	
6	9965 100 60768	Cleaning padholder	
7	4322 004 93831	Cleaning pad	
8	4322 006 09351	Cordset Octopus EU	FC7020/01
8	4322 006 00701	Cordset Octopus Taiwan plug	FC7020/31
8	4322 006 07841	Cordset Octopus AR	FC7020/51
8	4322 006 09381	Cordset Octopus 3 pin UK plug	FC7020/61
8	4322 006 09391	Cordset Octopus AU	FC7020/71
8	4322 006 09361	Cordset Octopus China	FC7020/81
9	9965 100 60775	Front body (incl. Switch)	
10	4322 006 95031	Pump M2	220 - 240V ~ 50 / 60 Hz 18W
11	9965 100 60766	Dust tank	
12	9965 100 60771	Driving belt	
13	9965 100 60776	Roller Holder assy	
14	9965 100 60765	Rotating brush	
15	4322 006 95021	Motor H41-5HA1033B	230V 50 Hz
16	9965 100 60778	Wheel big	
17	9965 100 60774	Wheels small	
18	9965 100 60769	Roller Brush cover	
19	9965 100 70991	Nozzle assy	
20	9965 100 70993	Hose clamp	
21	9965 100 70992	Shrink tube	
22	9965 100 70994	Tiewrap	







## Version history

Version 1.1 : FC7020/01 / FC7020/71 / FC7020/81 initial release.

Version 1.2 : In Parts List and Exploded views:

Added: Pos. 19, 9965 100 70991 Nozzle assy

Added: Pos. 20, 9965 100 70993 Hose clamp

Added: Pos. 21, 9965 100 70992 Shrink tube

Added: Pos. 22, 9965 100 70994 Tiewrap

Version 1.3 : Added new version: FC7020/61

Moved Circuit Diagram from page 4-8 to page 3-8

In Parts List and Exploded view: Added Pos. 8, 4322 006 09381 Cordset Octopus 3 pin UK plug FC7020/61

Version 1.4 : Added new version: FC7020/31

In Parts List and Exploded view: Added Pos. 8, 4322 006 00701 Cordset Octopus Taiwan plug FC7020/31

Version 1.5 : Added new version: FC7020/51

In Parts List: Added Pos. 8, 4322 006 07841 Cordset Octopus AR FC7020/51