



Philips Consumer Lifestyle

Service Manual

PRODUCT INFORMATION

- This product meets the requirements regarding interference suppression on radio and TV.
- After the product has been repaired, it should function properly and has to meet the safety requirements as officially laid down at this moment.
- All removable parts are dishwasher proof.

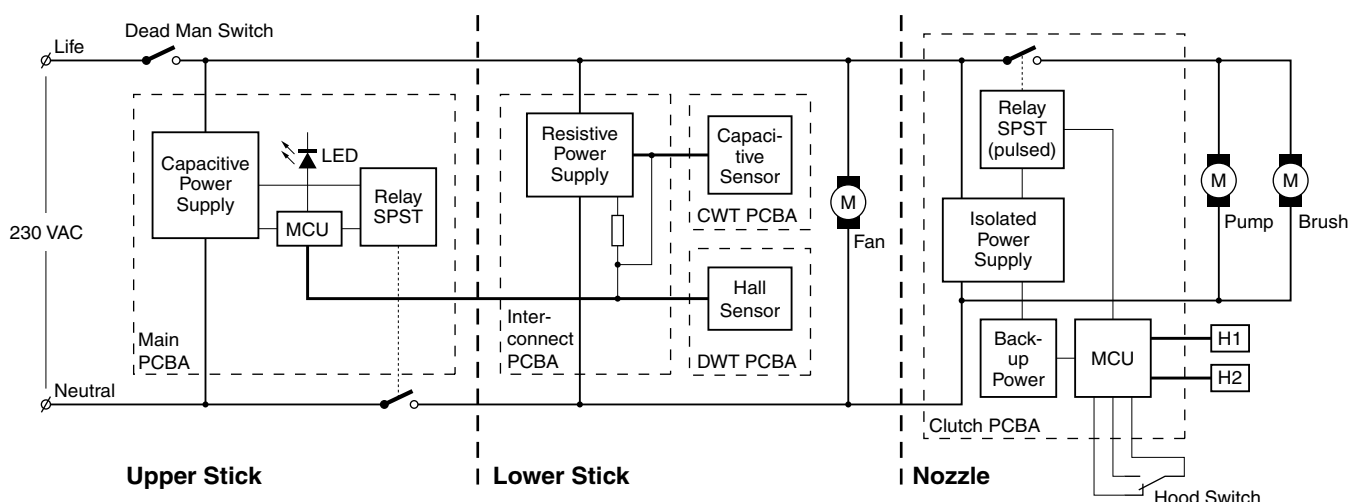
TECHNICAL INFORMATION

- | | |
|-----------------------------|-------------------------------|
| • Voltage | : 220 V / 230 V |
| • Frequency | : 50 Hz |
| • Power Consumption (IEC) | : 450 W |
| • Colour setting | : Dark midnight & Lime Yellow |
| • Weight | : 7,5 kg |
| • Dimensions L x W x H (cm) | |
| Appliance on Drip tray | : 117,2 x 38,2 x 36,4 |
| • Clean Water Tank Capacity | : 0,7 L |
| • Dirty Water Tank Capacity | : 1,0 L |

(OPTIONAL) Accessories

- Replacement brushes - FC8054
- Drip tray

Electrical diagram:



DISASSEMBLY- AND RE-ASSEMBLY ADVISE

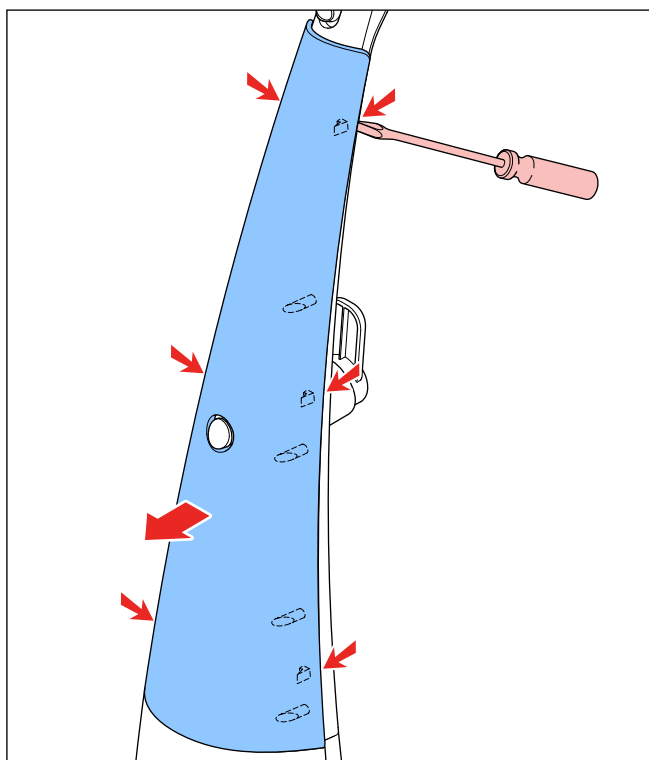
The system consists of three major parts:

- Upper Stick
- Lower Stick
- Nozzle

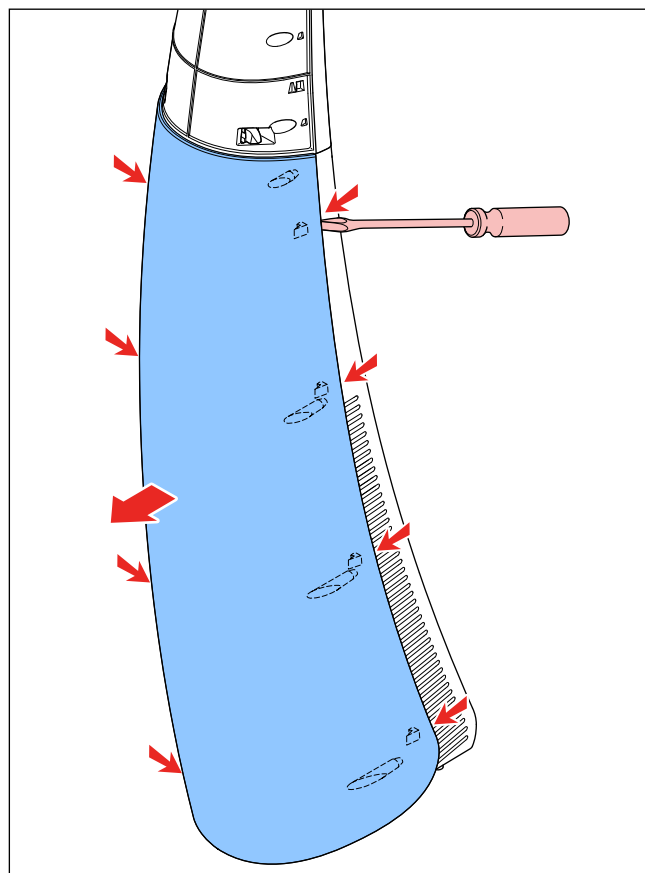
Upper / Lower stick

Remove the decorative front covers of both the Upper Stick and Lower stick.

To prevent scratches or damage it is advisable to detach the decorative covers and store them aside. To remove the decorative cover of the upper stick, take a small flat-head screwdriver and unlock the six snaps as indicated in the illustration below. Carefully move the panel forward, there are eight pillars guiding the panel on the frame behind.



To remove the decorative cover of the lower stick, take a small flat-head screwdriver and unlock the eight snaps as indicated in the illustration below. Carefully move the panel forward, there are eight pillars guiding the panel on the frame behind.



Remove the complete stick from the nozzle.

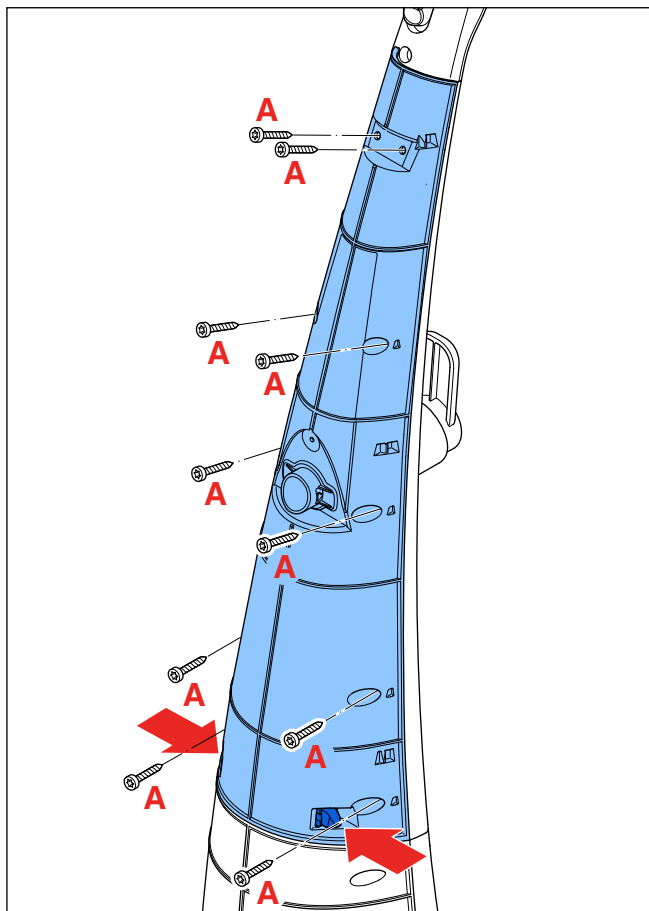
To be able to open the Upper Stick assy and Lower Stick assy the stick needs to be removed from the Nozzle, to do so unscrew the screw **K** holding the Clamp in place. Carefully open the Clamp and separate the Stick from the Nozzle. Please notice to orientation of the several connectors inside the joint. Within the joint are two electrical connections and two water connections present. Especially the electrical and small clean water connectors are fragile, considering the weight of the stick, please handle them with care during reinstallation.

At this point, also remove the Joint housing from the lower stick by unscrewing the four screws **F**.

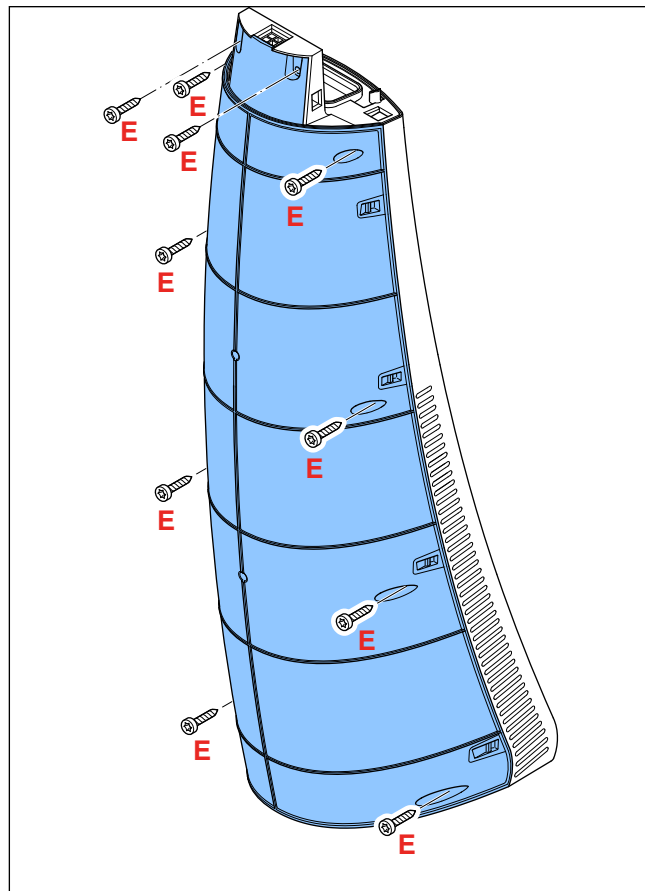
Open the Upper Stick assy and Lower Stick assy.

When a new appliance arrives at the consumer, the Upper Stick assy is separated from the Lower Stick assy. The consumer connects the Upper Stick assy to the Lower Stick assy, this is a one-time only connection and cannot be undone by the consumer. Service can disconnect these parts again.

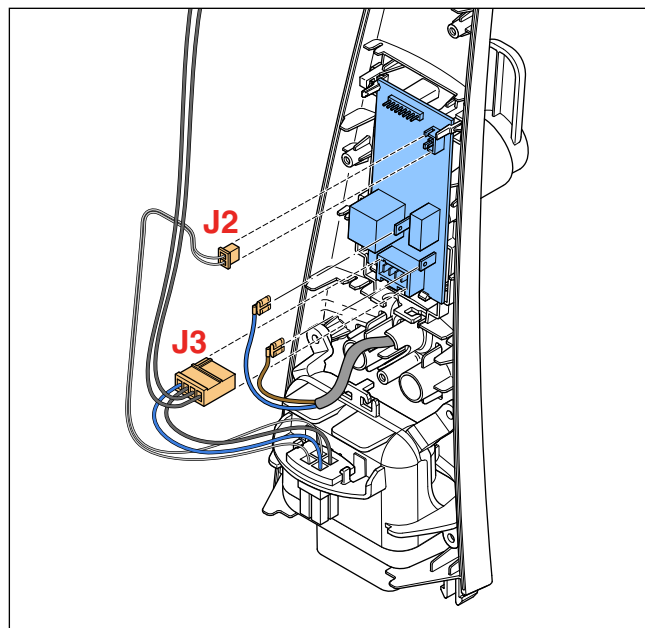
First remove the ten screws **A** from the Front Housing and operate the two white clamps securing the internal electrical connection from the Upper Stick assy to the Lower Stick assy. You can now remove the Front Housing panel and access the internal components



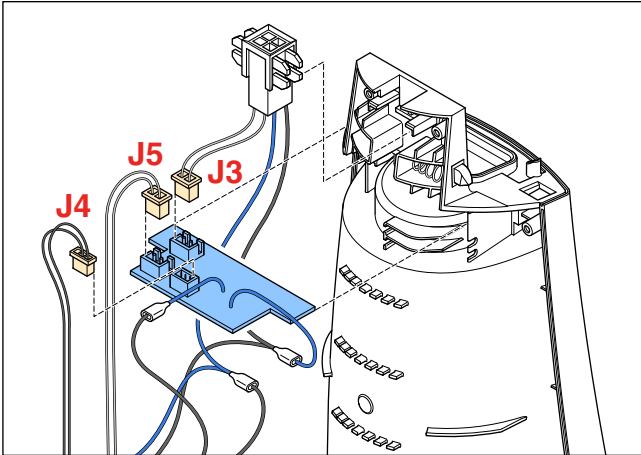
Secondly remove the ten screws **E** from the Front Frame and remove the Front Frame from the Lower Stick assy. You can now access all internal components.



To exchange the PCBA in the Upper Stick assy, simply unlock the Positive Lock Fastons from the PCB, unlock connector **J3** and remove the PCBA from its holder.



To exchange the PCBA in the Lower Stick assy, open the PCB Box and undo connectors **J3** (Main PCBA), **J4** (Clean Water sensor) and **J5** (DWT Hall sensor).



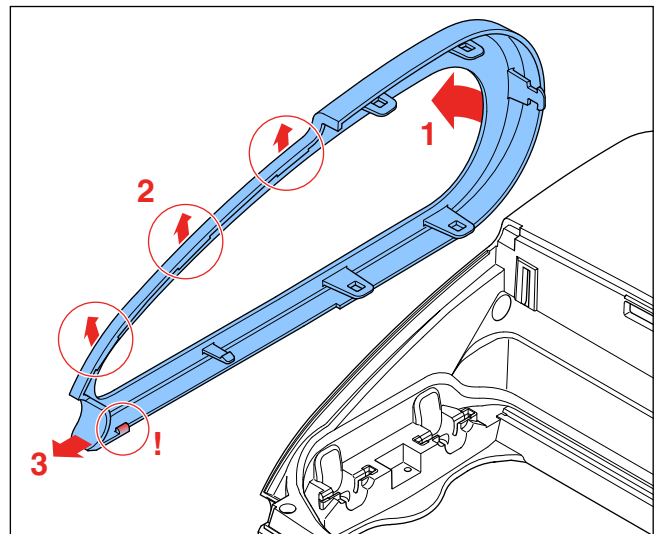
To exchange the Motor assy undo the fastons on the two black wires coming from the Motor assy going to the 4P male connector to the Upper Stick assy. Unscrew screw **J** holding the DWT Hall sensor in place, and unscrew the two screws **I** Holding the Motor assy in place. You are now able to carefully remove the Motor assy from the Lower Stick assy.

With the Motor assy removed you can also easily access the hinge construction holding the locking of the DWT handle in place. Both left and right hinge needs to be installed on the link before the hinge unit can be reinstalled in the appliance.

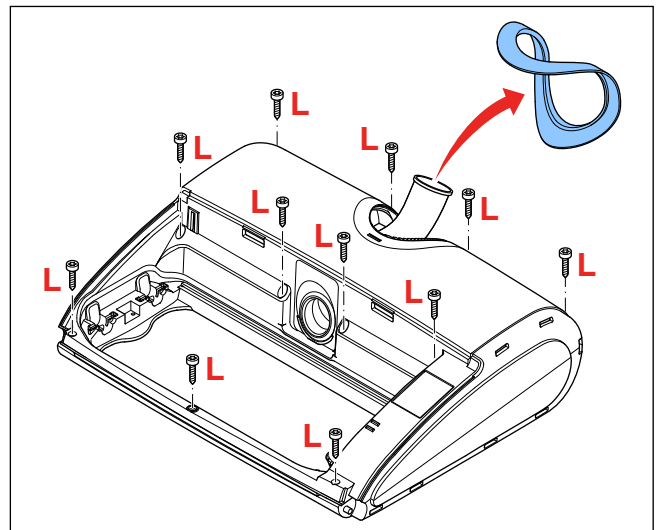
Nozzle

To be able to open the nozzle, first open the hood, take out the brush cover and remove the brushes. Clean the inside of the brush compartment if necessary.

Then carefully remove the side panels left and right from the nozzle, starting from the rear of the nozzle, along the top and bottom side of the nozzle, working to the front of the nozzle, ending at the hinge of the hood. Most connections are snaps, only the mating surface with the hood is a snap over construction, there the side panel needs to be lifter upwards a little bit to become undone. Only use a flathead screwdriver when absolutely necessary, because the plastic is easily damaged.



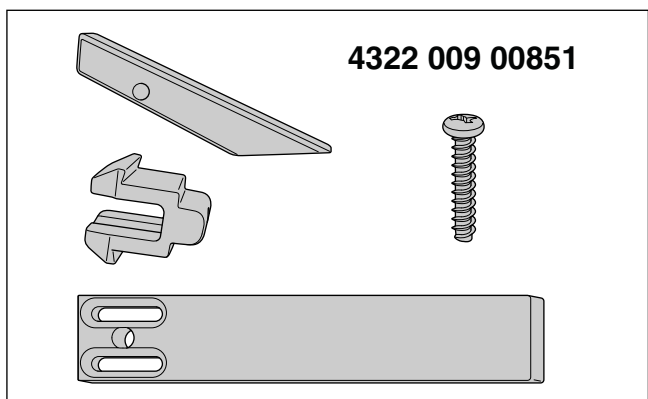
Carefully unsnap the collar from the nozzle. Next remove 11 screws **L** (2 are underneath the collar) to be able to remove the upper housing from the nozzle.



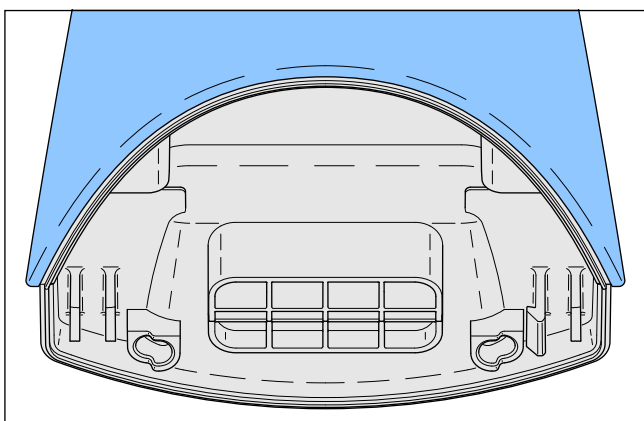
You can now easily access all components like the Nozzle PCBA, pump, suction tube, drive train etc.

When reassembling please take care that the different seals are placed back properly, keep in mind that especially the nozzle is a wet environment, and that all electronic leads are double isolated.

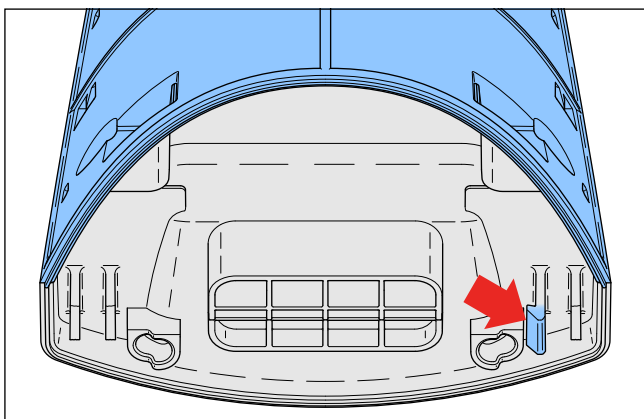
Instructions Stick connector Aquatrio



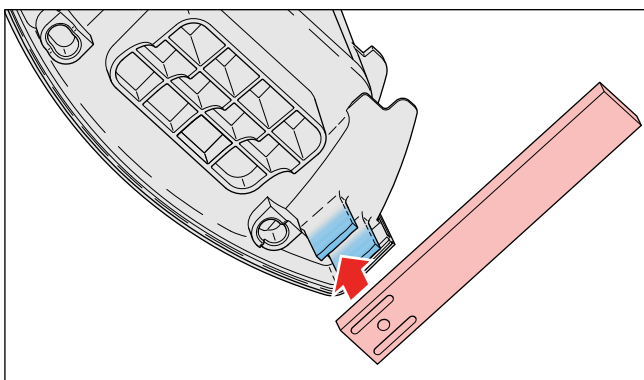
- Remove the upper cover.



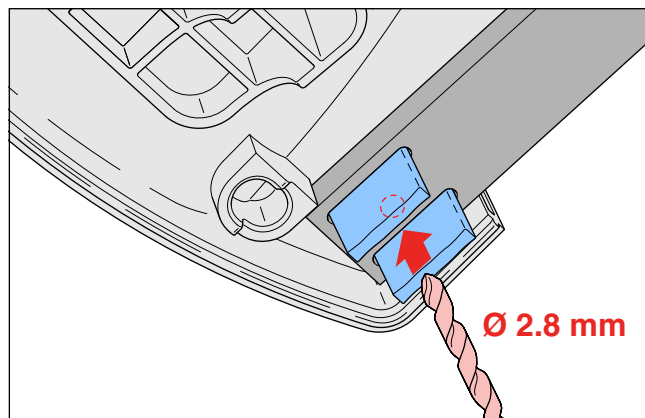
- Remove the housing front (and if needed the remaining click(s)).



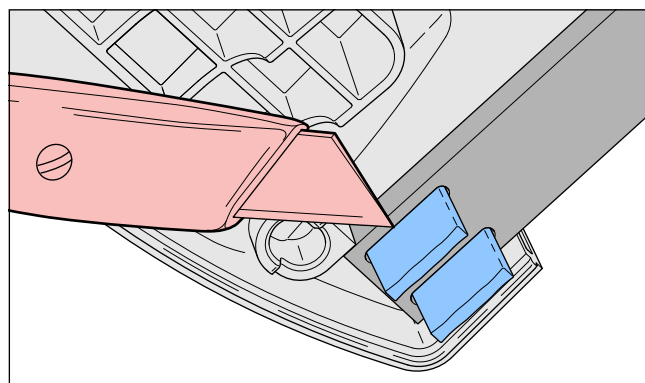
- Place the (drilling and) cutting plate. **With the chamfers of the holes for the legs facing the housing rear.**



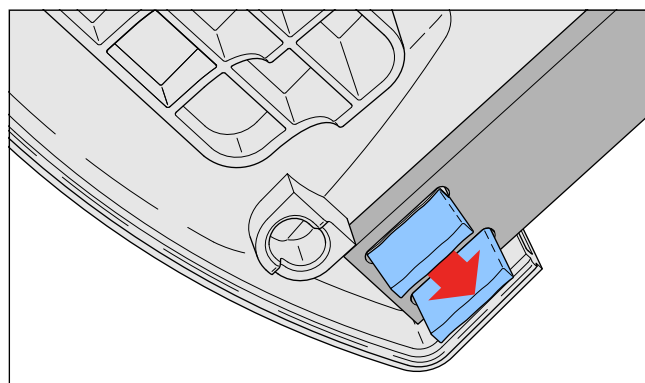
- Drill a Ø 2.8 mm hole, through the cutting plate, in the housing rear.



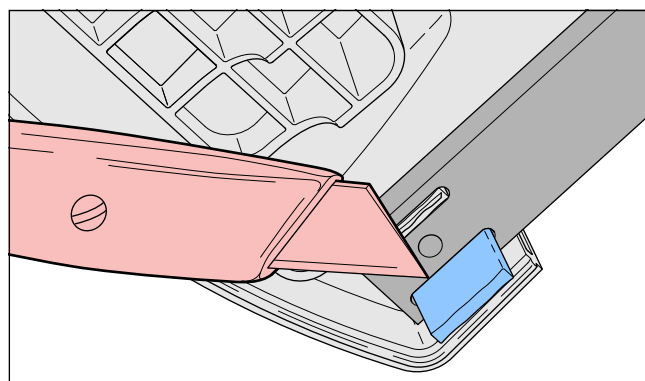
- Carve the first leg along the cutting plate.



- Break the first leg.

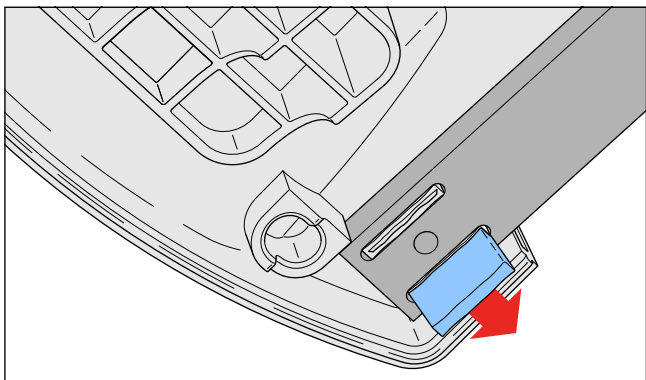


- Carve the second leg along the cutting plate.

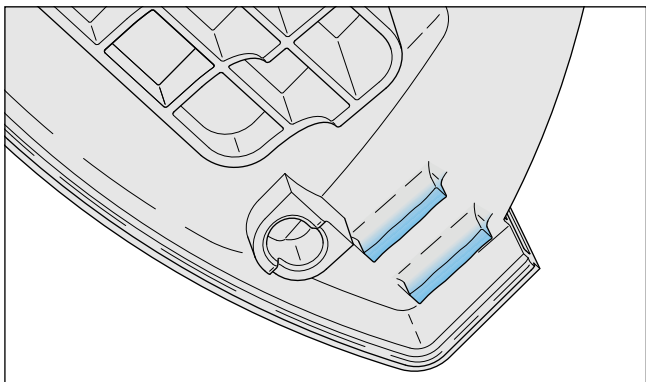
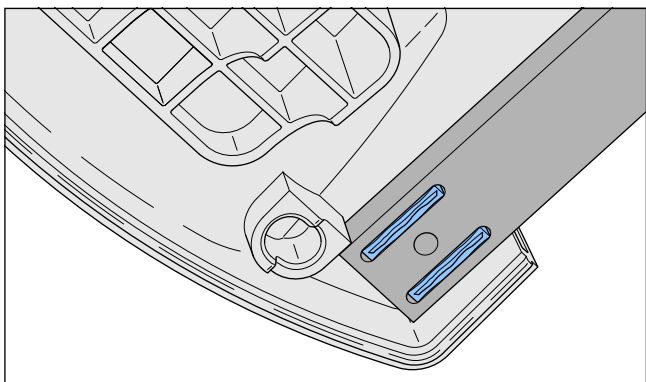


REPAIR INSTRUCTIONS

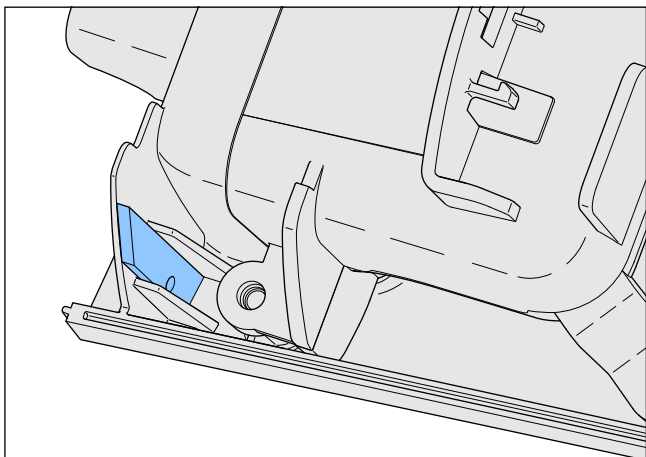
- Break the second leg.



- Remove the second leg. **Make sure the cutted surfaces of the legs is not sticking out the plate.** If needed, adapt this by cutting or filing the legs.

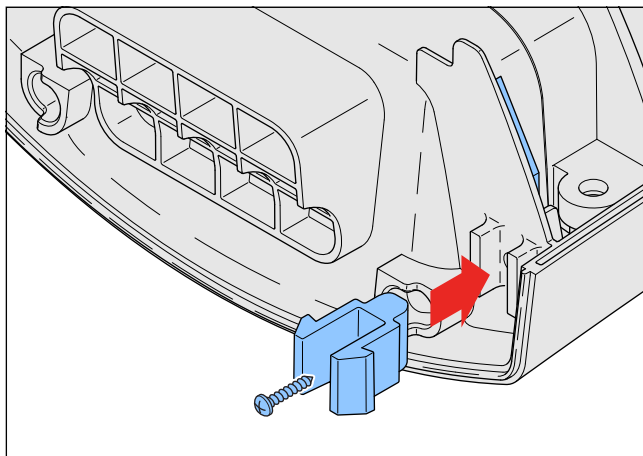


- Place the bolt plate.

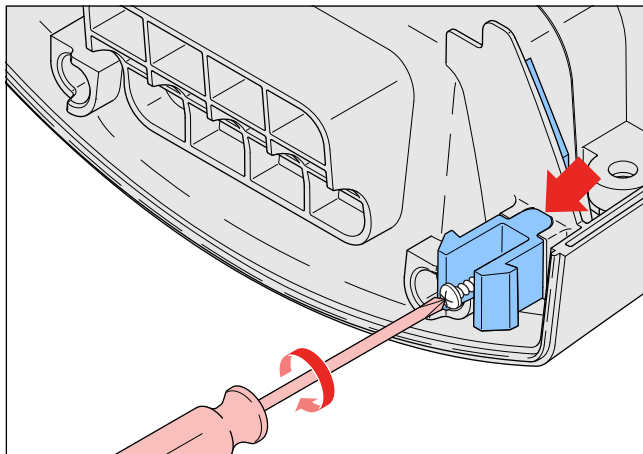


FC7070/01 /11 /61 /81

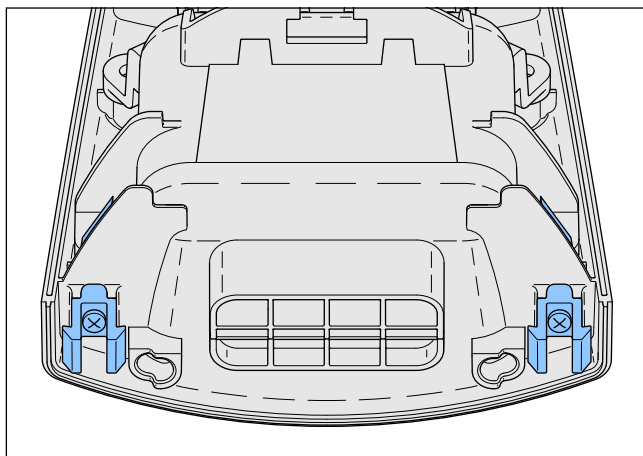
- Place the click finger 4, and the screw 2.8 x 16 head 5.8.



- Tighten the screw. **Make sure the bottom of the click finger 4 touches the housing rear.** If not, most likely the remaining leg(s) are still too long.



- Repair the other side.

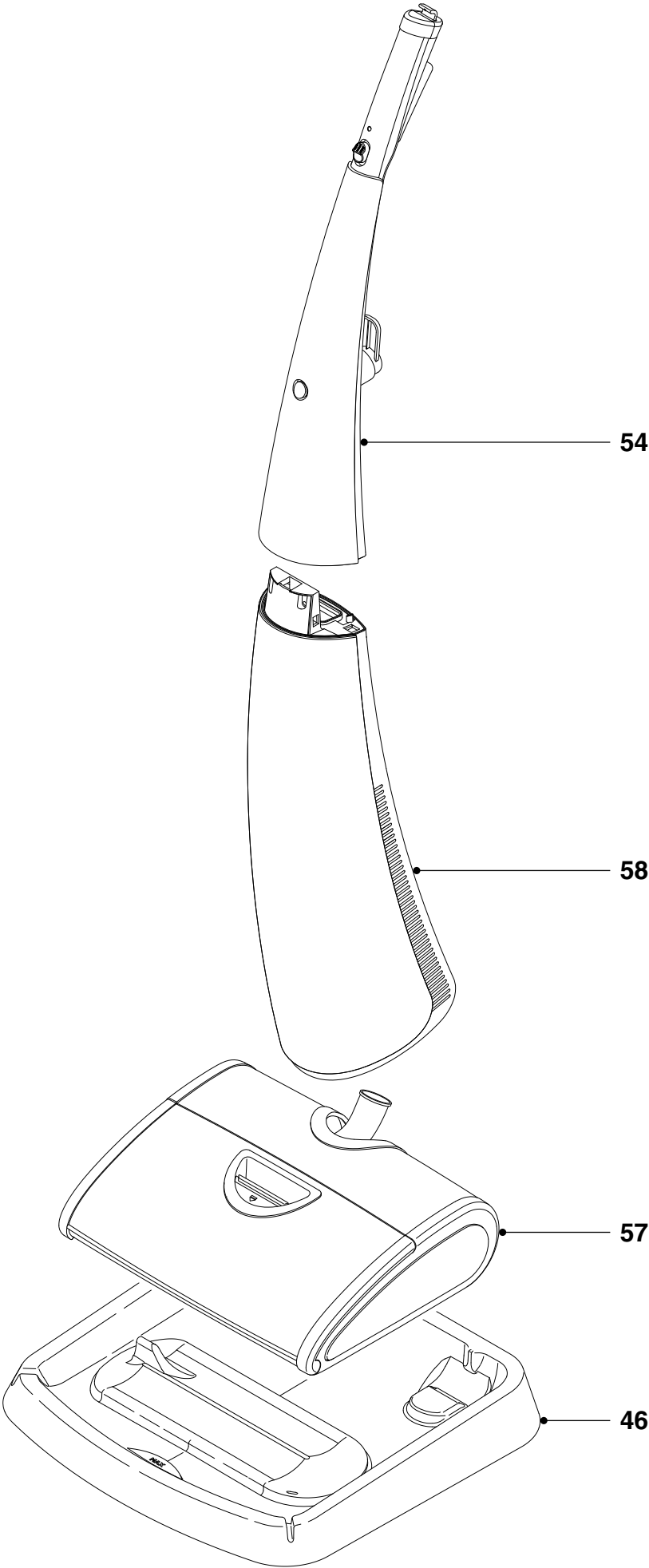


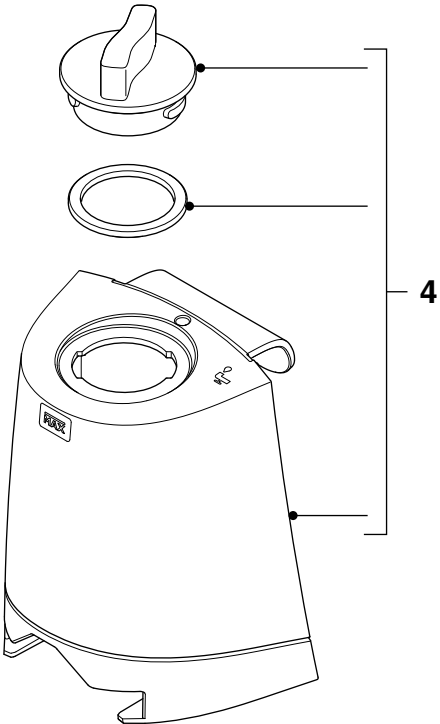
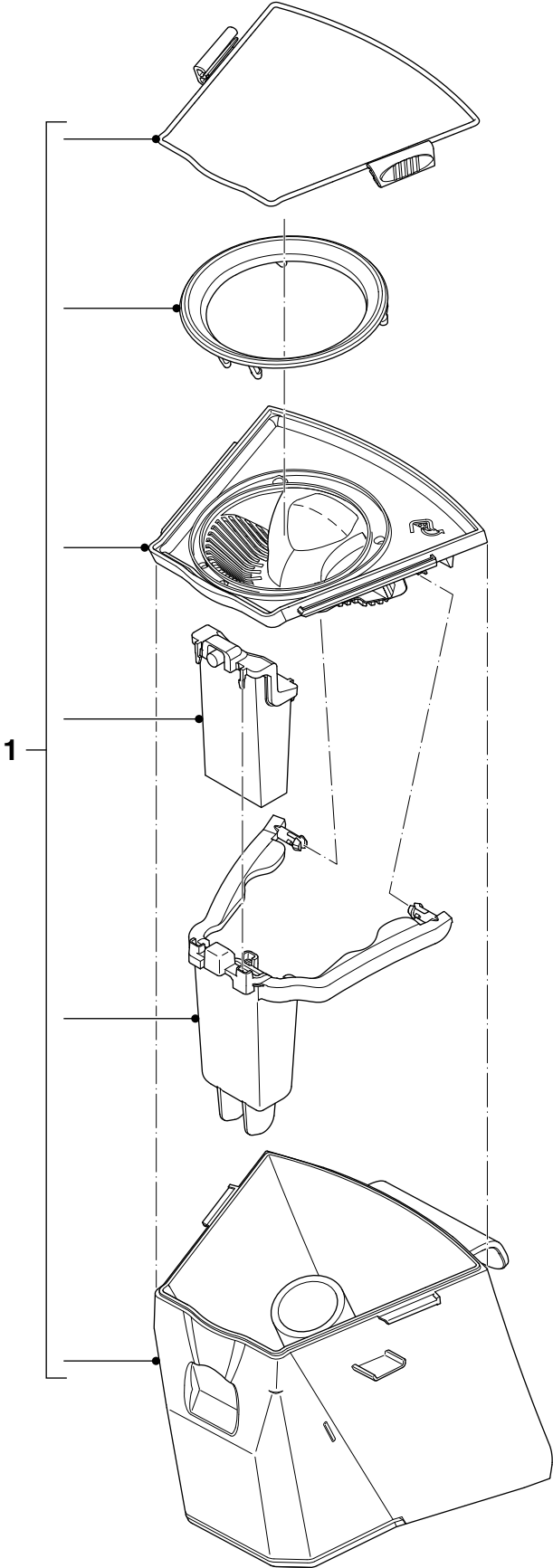
PARTS LIST

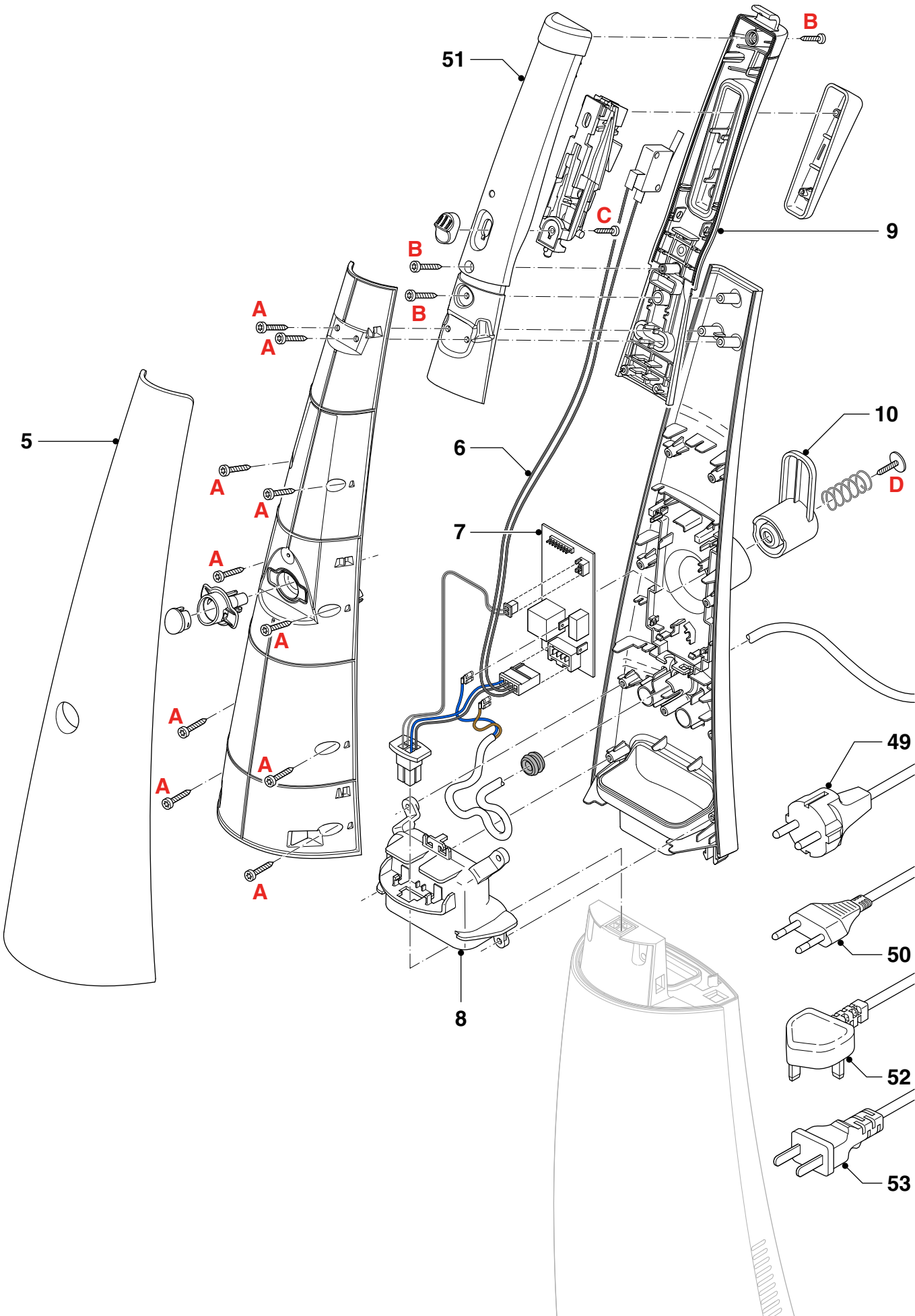
FC7070/01 /11 /61 /81

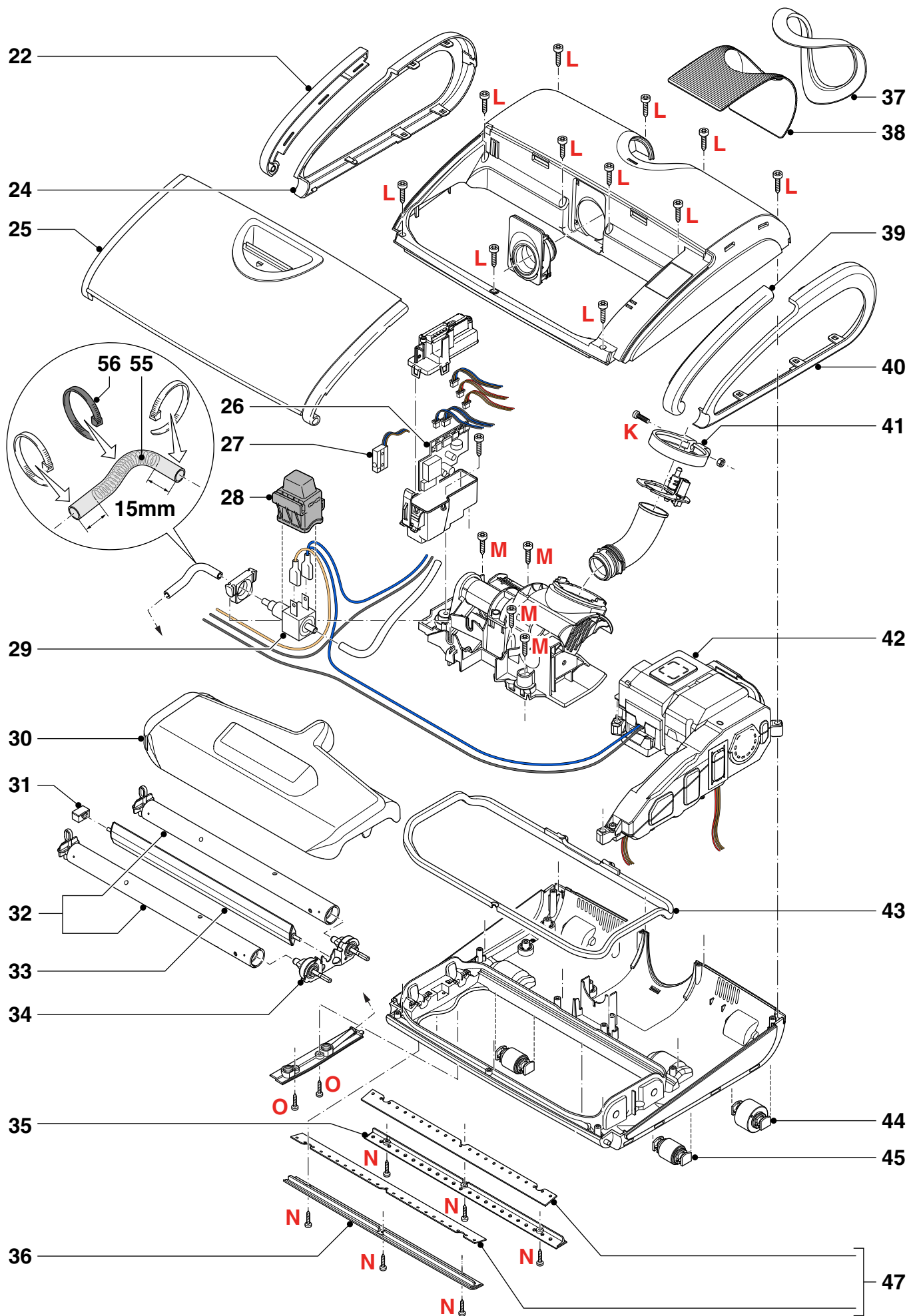
Pos	Service code	Description
1	4322 005 2683I	Dirty water tank assy
4	4322 005 2684I	Clean water tank assy
5	4322 005 3028I	Upper stick cover
6	4322 005 3012I	Microswitch with cables & conn.
7	4322 006 24403	Main PCBA
8	4322 003 3936I	Handle backpart
9	4322 003 3938I	Grip rear
10	4322 003 3942I	Cord hook
11	4322 005 3129I	Sensor interface PCBA
12	4322 005 3183I	Motor assy 220V
	4322 005 3420I	Motor housing assy 220V
	4322 005 2686I	Motor assy 230V
	4322 005 3485I	Motor housing assy 230V
13	4322 005 3027I	Lower stick cover
14	4322 001 7457I	Clean water tube
15	4322 005 35233	Handle CWT assy Energie blue
16	4322 003 3915I	Clean water tank interface
	4322 003 3018I	CW Hose connector
17	4322 003 3913I	Hinge right
18	4322 003 3912I	Hinge link
19	4322 003 3967I	Hinge left
20	4322 005 35223	Handle DWT assy Energie blue
21	4322 005 3285I	Joint housing
22	4322 003 4228I	Hood side panel left
24	4322 003 3872I	Nozzle side panel left
25	4322 005 2676I	Hood assy (excl. side panels)
	4322 005 3210I	Hood assy (excl. side panels) CN
26	4322 006 24603	Nozzle PCBA
27	4322 005 3240I	Microswitch assy
28	4322 001 7497I	Pump cover
29	4322 006 9630I	Clean Water pump Oceanos
30	4322 003 3893I	Brush cover
	4322 003 4852I	Brush cover
31	4322 003 4437I	Safety bar holder
	4322 003 3038I	Safety bar holder
32	4322 005 2678I	Brush assy
	4322 005 3604I	Brush assy
33	4322 005 3032I	Mid bar assy
	4322 005 3437I	Safety bar assy

Pos	Service code	Description
34	4322 005 3293I	Brush coupling assy
	4322 005 3599I	Brush coupling assy
35	4322 003 3870I	Spoiler clamp back
36	4322 003 3869I	Spoiler clamp front
37	4322 003 3891I	Collar
38	4322 003 4035I	Tilt mechanism curtain
39	4322 003 3895I	Hood side panel right
40	4322 003 3871I	Nozzle side panel right
41	4322 003 4034I	Joint clamp
42	4322 005 3185I	Drive train assy 220V
	4322 005 2672I	Drive train assy 230V
43	4322 001 7462I	Brush cover seal
44	4322 005 2674I	Rear wheel assy
45	4322 005 2673I	Front wheel assy
46	4322 003 38652	Drip tray
	4322 003 3040I	Drip tray
47	4322 001 7464I	Rubber spoiler
48	4322 005 3157I	Dirty water tank full sensor
49	4322 005 31262	Power cord EU
50	4322 005 32022	Power cord Swiss
51	4322 003 39372	Grip front
52	4322 005 3324I	Power cord HK
53	4322 005 31942	Power cord CN
54	4322 005 2685I	Upper stick assy EU
	4322 005 3203I	Upper stick assy Swiss
	4322 005 3322I	Upper stick assy HK
	4322 005 3195I	Upper stick assy CN
55	4322 000 0037I	Spring
56	4322 001 7521I	Tiewrap
57	4322 005 31883	Oceanos Nozzle assy 220V PRC
	4322 005 26712	Oceanos Nozzle assy
58	4322 005 2682I	Lower stick assy
	4322 005 3186I	Lower stick assy 220V
	4322 009 0085I	Stick connector









Version history

Version 1.1 : FC7070/01 / FC7070/11 / FC7070/61 / FC7070/81 initial release.

Version 1.2 : In Parts List and Exploded view: Changed Pos. 15, 4322 003 4767I Handle clean water tank into 4322 005 3523I Handle CWT Energie blue assy.

In Parts List and Exploded view: Changed Pos. 20, 4322 003 4768I Handle dirty water tank into 4322 005 3522I Handle DWT Energie blue assy.

In Parts List: Changed Pos. 29, 4322 006 9634I Clean Water pump Oceanos into 4322 006 9630I.

Version 1.3 : In Parts List: Added Pos. 12, 4322 005 3420I Motor housing assy 220V

Added Pos. 12, 4322 005 3485I Motor housing assy 230V

Added Pos. 16, 4322 003 3018I CW Hose connector

Added Pos. 30, 4322 003 4852I Brush cover

Added Pos. 31, 4322 003 3038I Safety bar holder

Added Pos. 32, 4322 005 3604I Brush assy

Added Pos. 33, 4322 005 3437I Safety bar assy

Added Pos. 34, 4322 005 3599I Brush coupling assy

Added Pos. 46, 4322 003 3040I Drip tray

Version 1.4 : In Parts List: Changed Pos. 15, 4322 005 3523I Handle CWT assy Energie blue into 4322 005 35233.

In Parts List: Changed Pos. 20, 4322 005 3522I Handle DWT assy Energie blue into 4322 005 35223.