



Philips Consumer Lifestyle

# Service Manual

## PRODUCT INFORMATION

- This product meets the requirements regarding interference suppression on radio and TV.
- After the product has been repaired, it should function properly and has to meet the safety requirements as officially laid down at this moment.

## Weight and dimensions (L x W x H):

- Dimensions of product : 406 x 282 x 220 mm
- Dimensions packaging : 520 x 300 x 290 mm
- Weight : 4.2 kg

## TECHNICAL INFORMATION

- Colour : Full red
- Input power : 750 W
- Suction Power : 190 W
- Noise level : 84 dB
- Dustcapacity : 3 L
- Filtration system : Micro filter S-bag

## Usability

- Action Radius : 8 m
- Cord length : 5 m
- Handgrip : Extra long ergonomic grip
- Accessory storage : Accessory holder on telescopic tube

## ACCESSORIES

- Standard nozzle : TriActive+ nozzle
- Additional nozzle : Mini Turbo brush and Alma HF nozzle
- Tubes : Aluminium 2-P telescopic tube
- Accessories : Crevice tool, Small nozzle

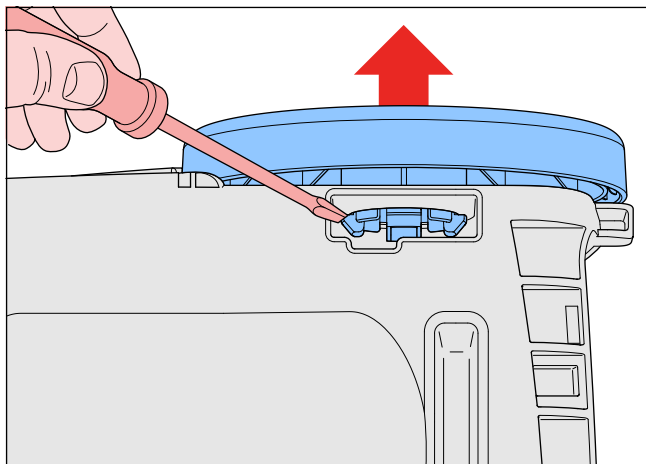
## REPAIR INSTRUCTION

- No specific issues

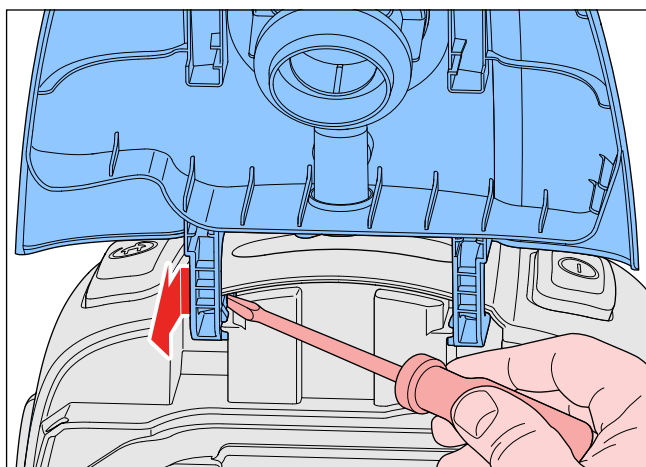
## OPTIONAL (accessories)

- FC8021/03 : Philips Disposable S-bag

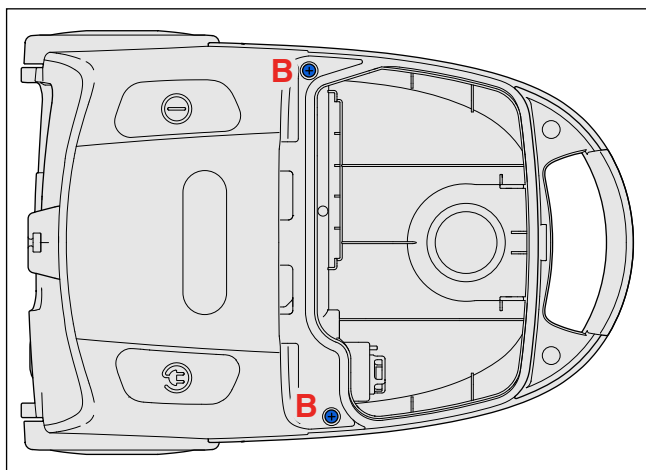
- First remove the dust bag.
- To replace the wheels (**10**), first turn the appliance upside down. To remove the wheel on the left side (seen from the backside), push with a screwdriver the nocks from the inside out, and pull the wheel out (see picture).



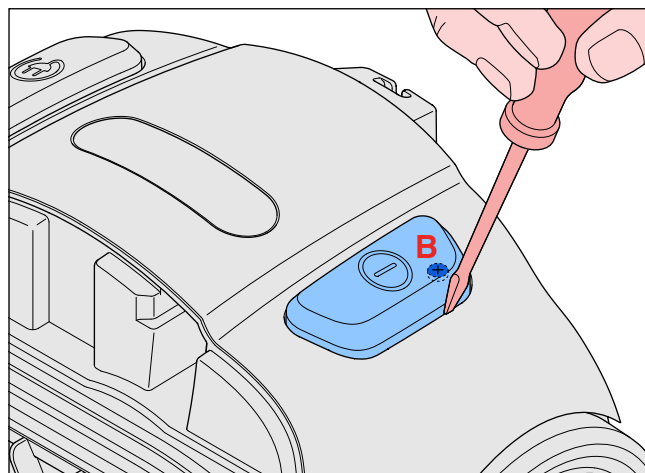
- To remove the wheel on the cordwinder side, pull the wheel with great force from the lower housing.
- To place a wheel, click the wheel into the housing.
- To reach te inner parts for repair, the top housing (**15**) has to be removed.
- Remove the dustcover assy (**1**) using a screwdriver (see picture).



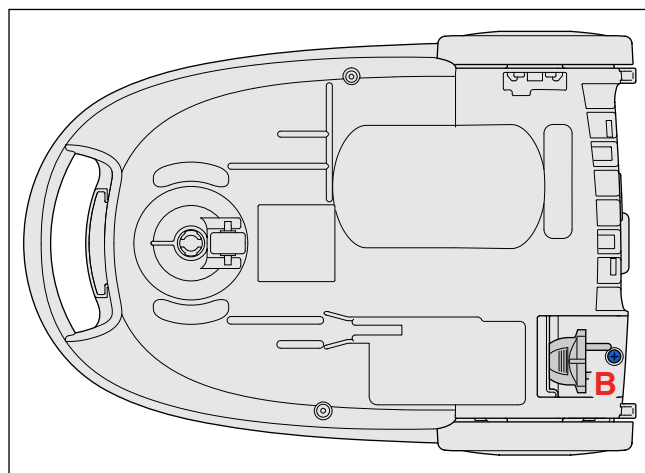
- When the dustcover has been removed, 2 of the 4 screws **B** that need to be unscrewed to disassemble the tophousing (**15**) are accessible (see picture).



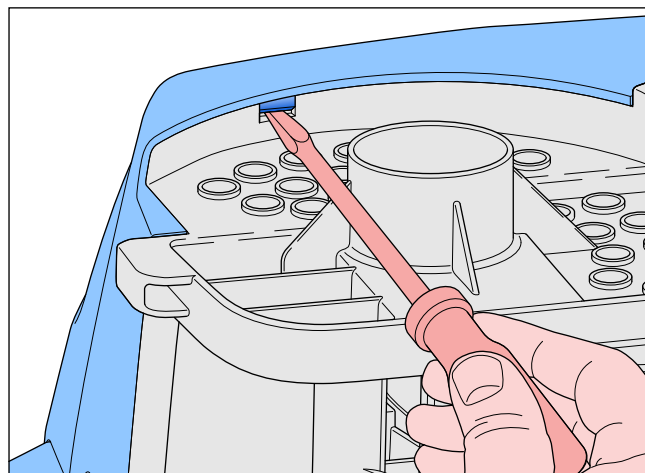
- The 3<sup>th</sup> screw **B** is hidden under the On/Off pedal (**12**), to remove the pedal use a screwdriver (see picture).



- Finally the last screw **B** that need to be removed is situated at the bottom side of the appliance (see picture).



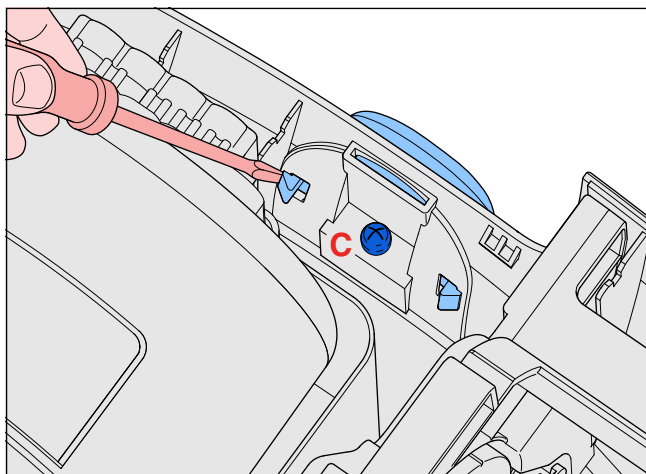
- To separate the top housing from the bottom housing release the snap connection behind the wheel at the cordwinder side (see picture).



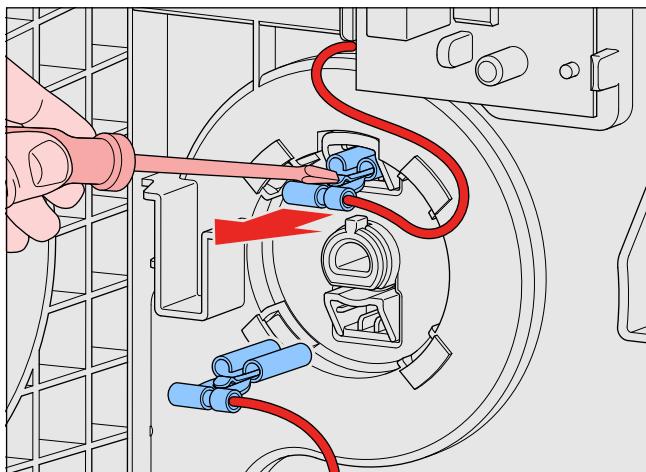
## DISASSEMBLY - AND RE-ASSEMBLY ADVISE

# FC8322/09

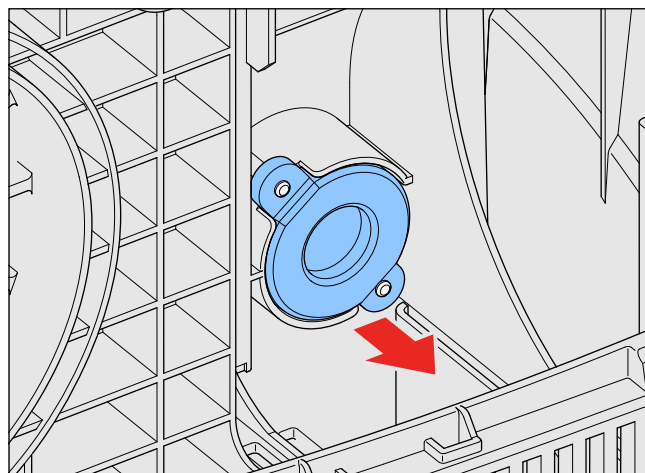
- To replace the parkhook (**13**), first remove Screw **C**, then by pushing the two lips with a screwdriver the parkhook can be removed (see picture).



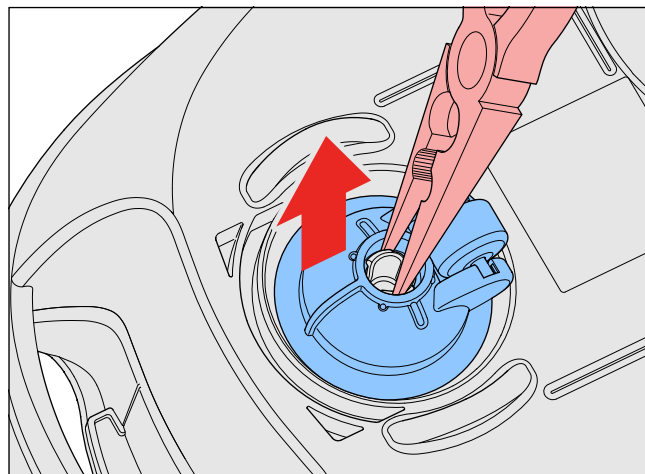
- To replace the cordwinder (**20**), first remove the wires, the locks can be unlocked with a screw driver (see picture).



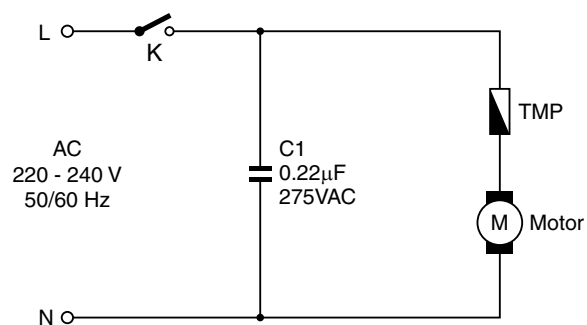
- The safety valve assy (**21**) can be clogged with dust, it can be easily taken out and replaced after the tophousing has been removed, it must be done from inside the bottom housing where the cordwinder is situated (see picture).



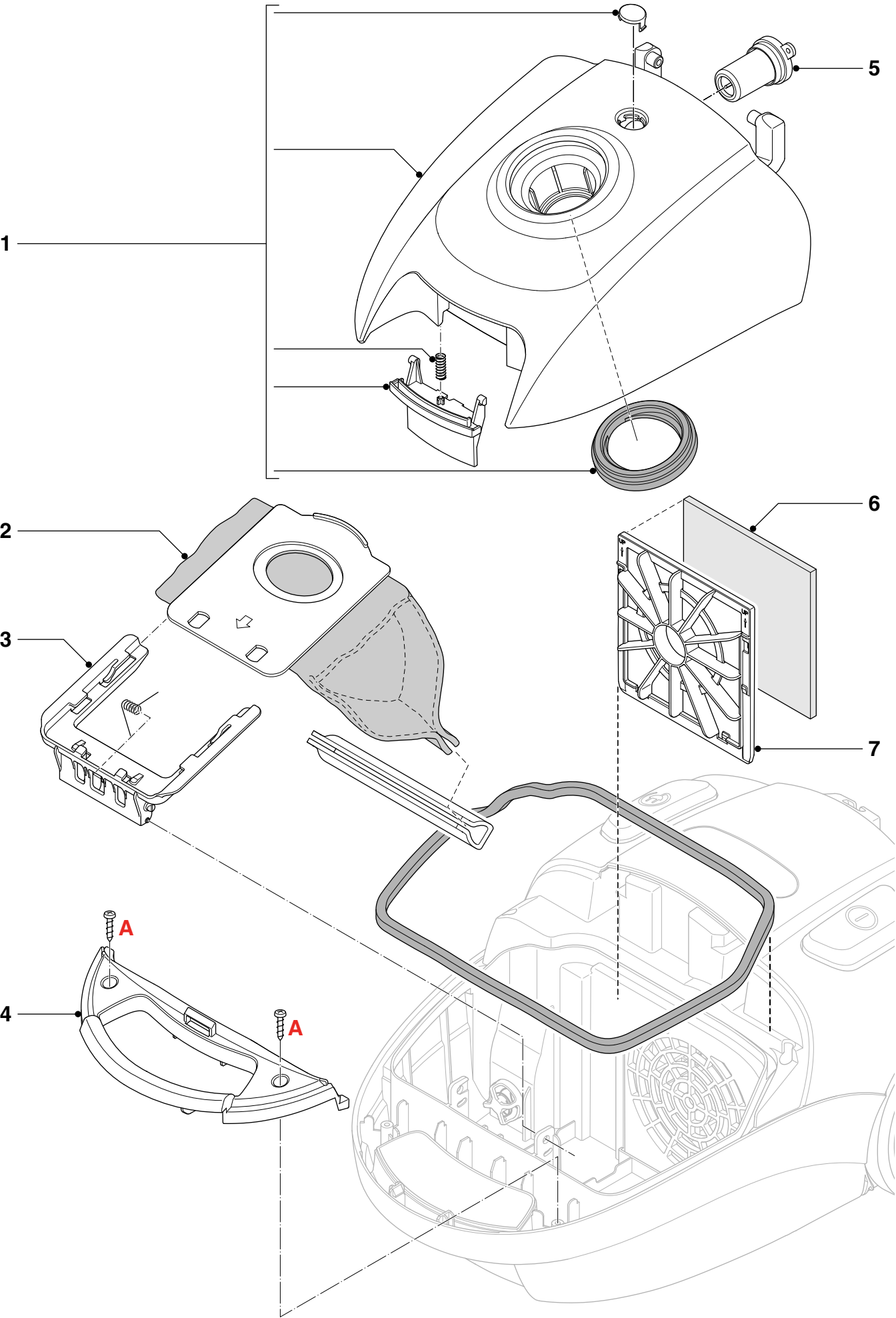
- When replacing the motor, make sure that the two red wires are placed underneath the motor.
- To replace the caster assy (**11**), squeeze the 2 dividers in the middle of the hole of the caster arm together with pliers, at the same time pull the caster assy off (see picture). The new caster assy can be snapped on in one single move.

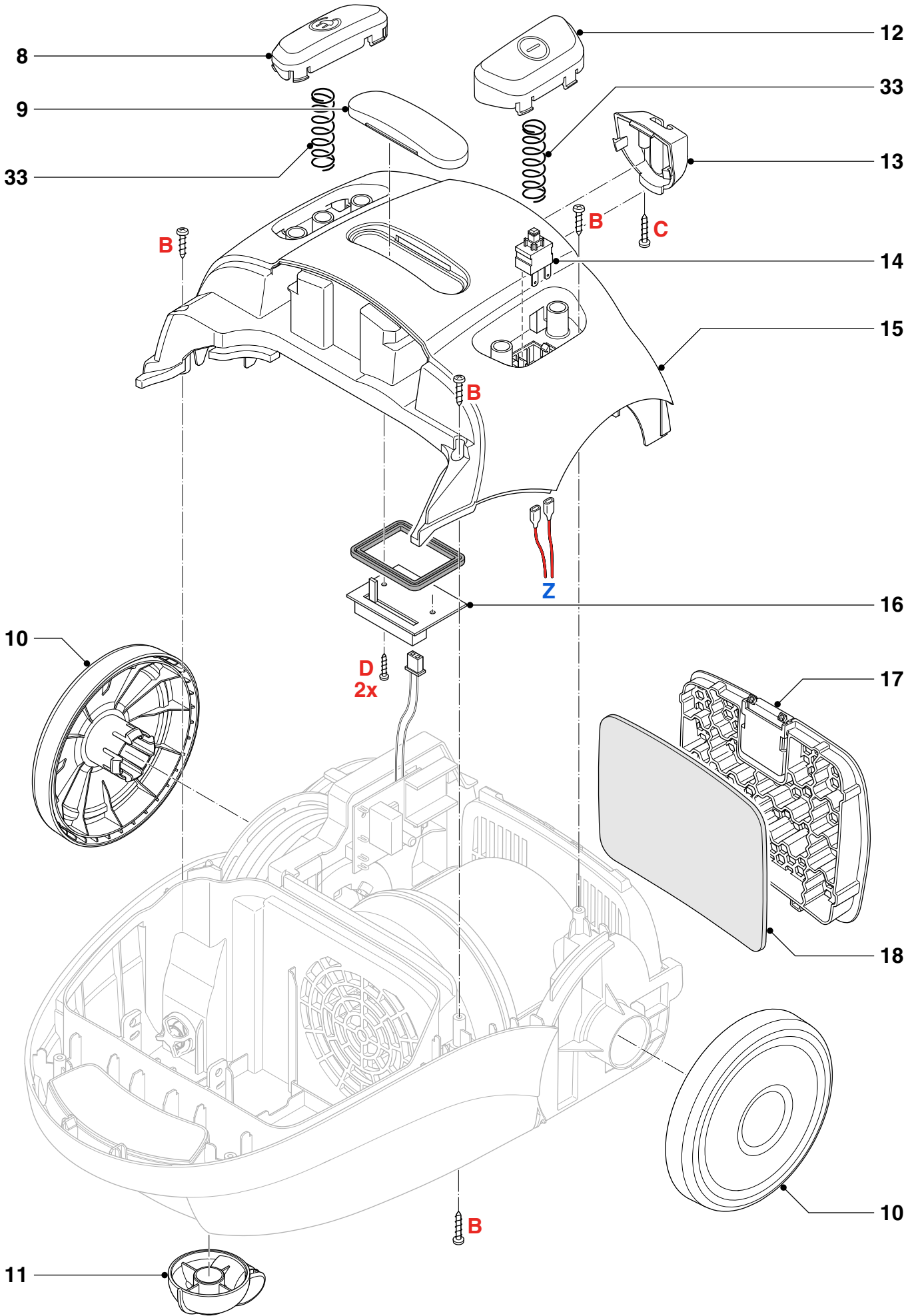


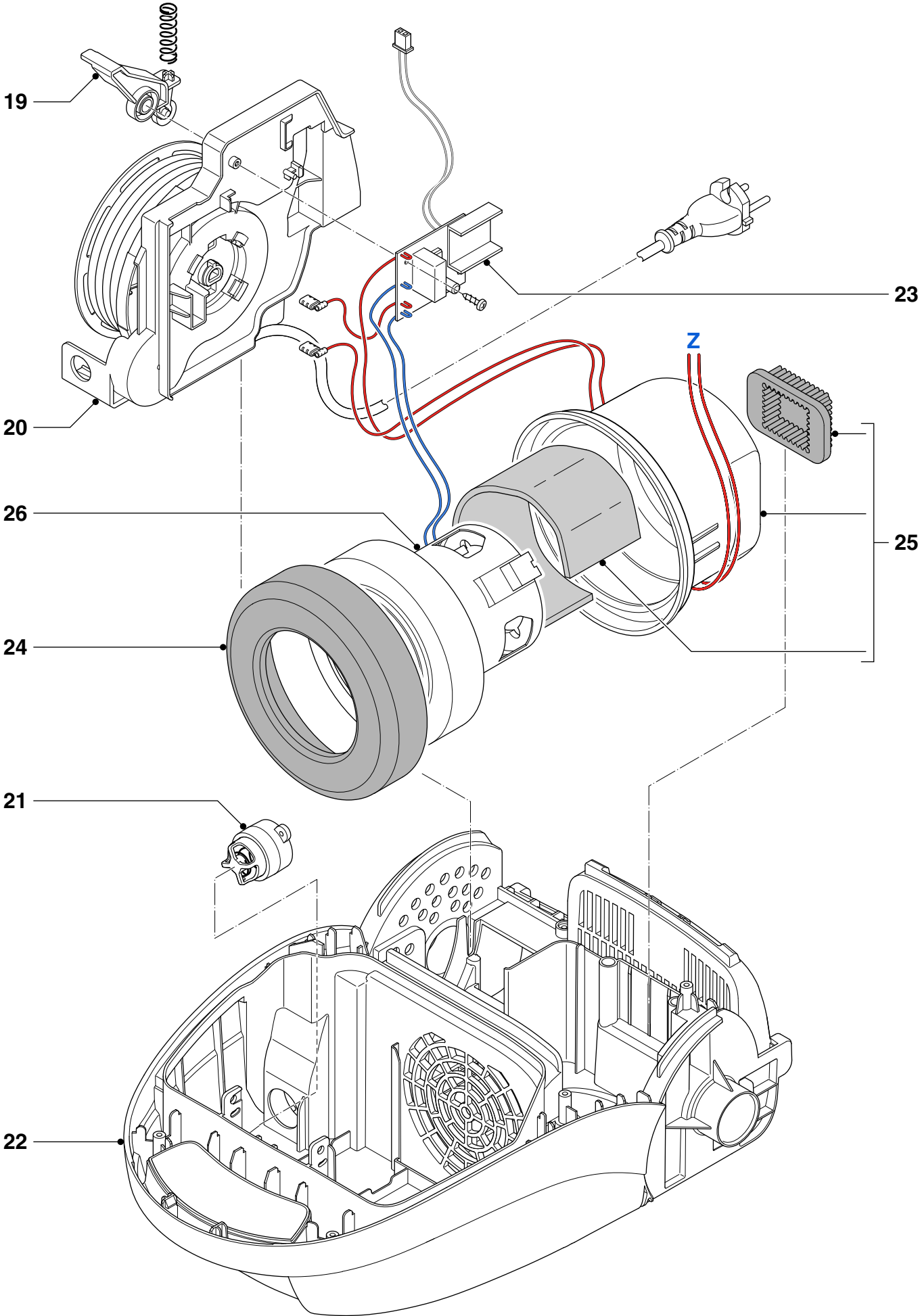
## ELECTRICAL DIAGRAM

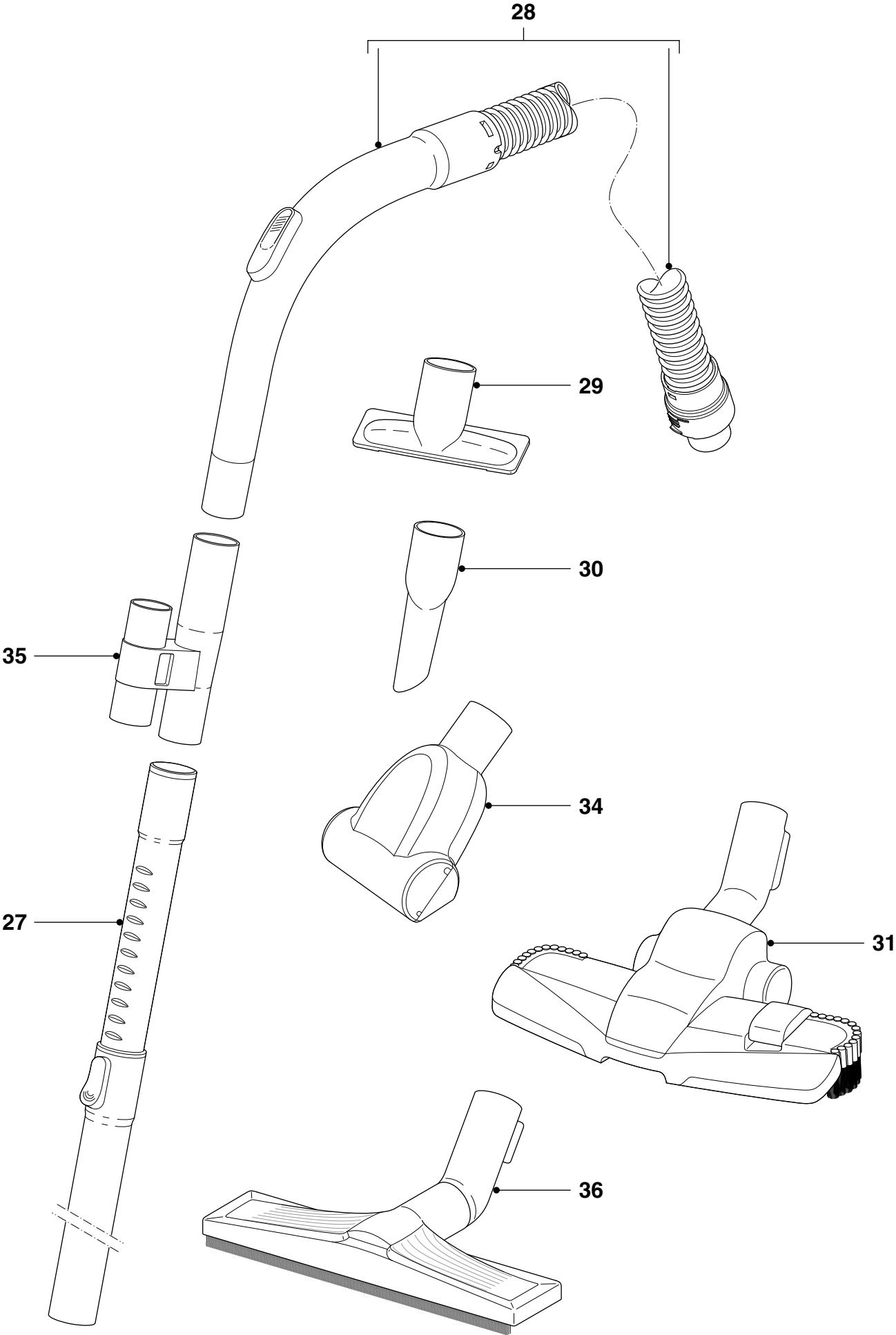


Pos	Service code	Description	Remark
1	9965 100 71385	Dustcover assy	Full red
2	4322 004 93701	Reusable dustbag	
3	9965 100 52011	Dustbag holder	
4	9965 100 71384	Cover for handle	Full red
5	4322 005 26061	Dustbag full indicator (Yellow)	Hare low power
6	4322 004 93671	Motor protector filter	Hare
7	9965 100 52003	Inlet filter frame	
8	9965 100 51985	Cordwinder pedal	Deep black
9	9965 100 71383	Top housing insert	Full red
10	9965 100 52004	Wheel assy	Deep black
11	9965 100 52008	Caster assy	Deep black
12	9965 100 51981	On/Off pedal	Deep black
13	9965 100 71382	Park hook	
14	9965 100 69356	Switch	
15	9965 100 71386	Top housing	Full red
16	9965 100 52001	Potmeter PCBA	
17	9965 100 52005	Outlet grille	
18	4322 004 93681	Exhaust micro filter	Hare
19	9965 100 52014	Cordwinder lever	
20	4322 005 36251	Cordwinder PowerLife	0.75 / 5 m / Euro / Black
21	9965 100 52929	Safety valve	
22	9965 100 54028	Bottom housing	Deep black
23	4322 006 24691	PCBA 220 - 230 V	Hare
24	9965 100 75721	Motorsealing	
25	9965 100 74442	Set of motorpart	
26	4322 006 99611	Kingclean motor 230 V / 50 - 60 Hz	MH2 -G 800 W IEC
27	4322 004 25071	2-P telescopic tube Conical 35 mm	Aluminum
28	4322 004 25181	Hose assy PowerLive	Deep black 80231
29	4322 004 25121	Small nozzle Conical 35 mm	Deep black 80231
30	4322 004 25111	Crevice nozzle Conical 35 mm	Deep black 80231
31	4322 004 25431	Tri-Active nozzle+ Conical 35 mm	Deep black 80231
33	9965 100 62293	Spring for buttons	
34	4322 004 24501	Mini Turbo brush	Dark raven 80236
35	4322 004 25201	Accessorie holder Easylive	Deep black 80231
36	4322 004 26061	Alma HF nozzle Conical 35 mm KC	Deep black









## Version history

14/09 Version 1.1 : FC8322/09 initial release.

15/02 Version 1.2 : On page 1 under Accessories Added Alma HF nozzle.

In Parts List and Exploded view: Added Pos. 36:

4322 004 26061 Alma HF nozzle Conical 35 mm KC Deep black.

16/05 Version 1.3 : In Exploded view: Changed Pos. 26.

In Parts List and Exploded view: Added Pos. 25: 9965 100 74442 Set of 4 motorparts.

16/06 Version 1.4 : In Parts List and Exploded view: Changed Pos. 25: 9965 100 74442 Set of 4 motorparts into Set of motorparts.

In Parts List and Exploded view: Added Pos. 24: 9965 100 75721 Motorsealing.