



Philips Consumer Lifestyle

Service Manual

PRODUCT INFORMATION

- This product meets the requirements regarding interference suppression on radio and TV.
- After the product has been repaired, it should function properly and has to meet the safety requirements as officially laid down at this moment.

Weight and dimensions (L x W x H):

- Dimensions of product : 406 x 282 x 220 mm
- Dimensions packaging : 520 x 300 x 290 mm
- Weight : 4.2 kg

TECHNICAL INFORMATION

- Colour : Deep black
- Power consumption : 2000 W
- Suction Power : 325 W
- Noise level : < 82 dBA
- Dustcapacity : 3 L
- Filtration system : Micro filter
S-bag

Usability

- Action Radius : 9 m
- Cord length : 6 m
- Handgrip : Extra long ergonomic grip
- Accessory storage : Accessory holder on telescopic tube

ACCESSORIES

- Standard nozzle : All-purpose nozzle
- Additional nozzle : Hard floor nozzle
- Tubes : Telescopic tube
- Accessories : Crevice and small nozzle
- Accessory storage : Accessory holder on tube

REPAIR INSTRUCTION

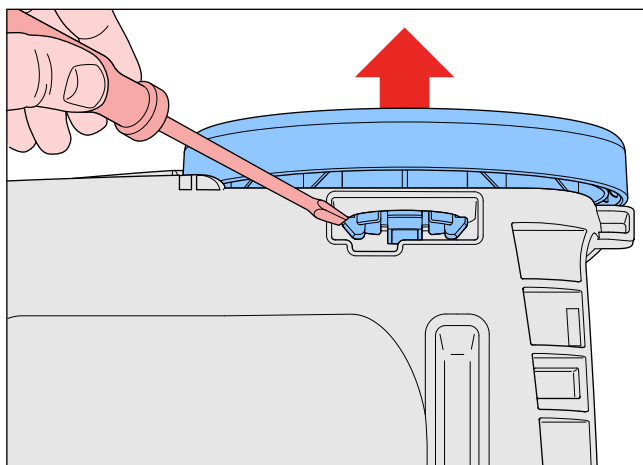
- No specific issues

OPTIONAL (accessories)

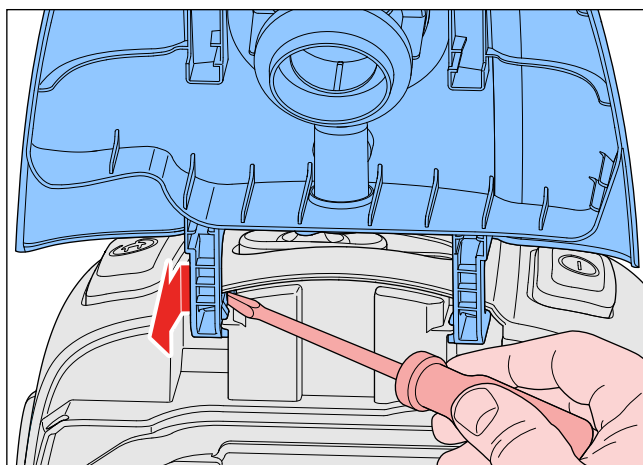
- No specific issues

DISASSEMBLY- AND RE-ASSEMBLY ADVISE

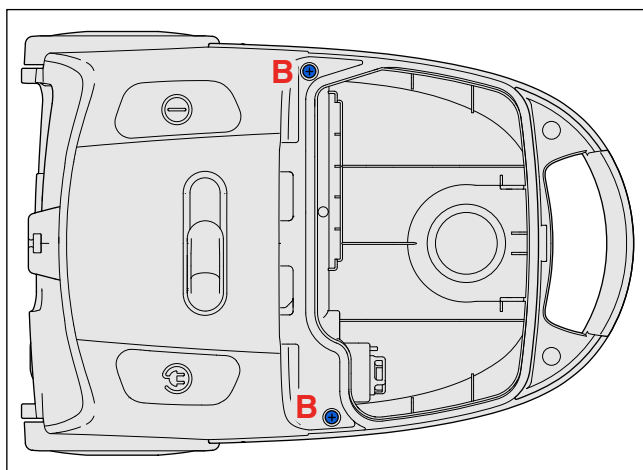
- First remove the dust bag.
- To replace the wheels (10), first turn the appliance upside down. To remove the wheel on the left side (seen from the backside), push with a screwdriver the nocks from the inside out, and pull the wheel out (see picture).



- To remove the wheel on the cordwinder side, pull the wheel with great force from the lower housing. To place a wheel, click the wheel into the lower housing.
- To reach the inner parts for repair, the top housing (15) has to be removed.
- Remove the dustcover assy (1) using a screwdriver (see picture).

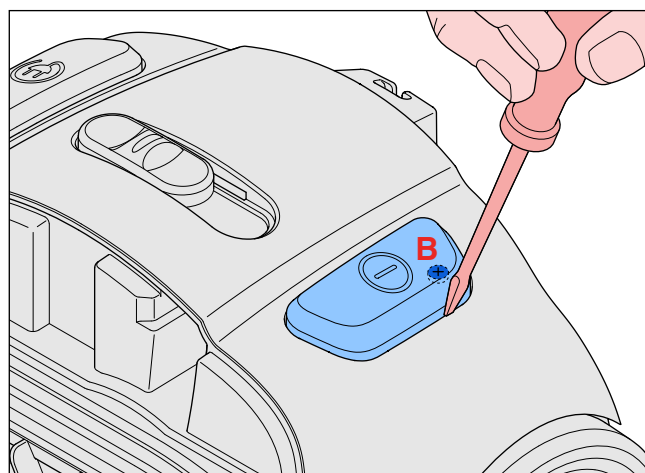


- When the dustcover has been removed, 2 of the 4 screws B that need to be unscrewed to disassemble the top housing (15) are accessible (see picture).

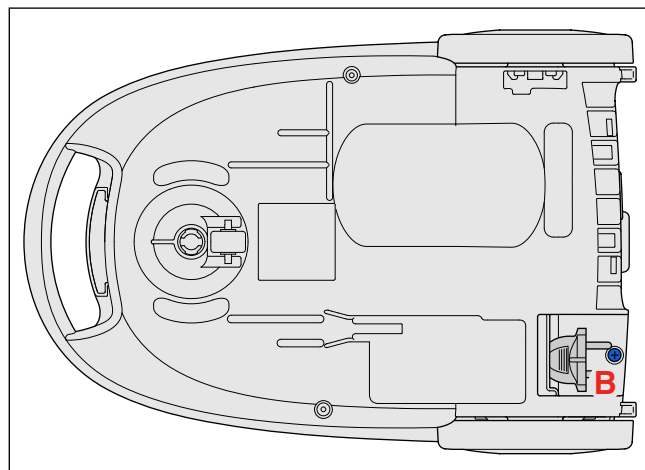


FC8454/01

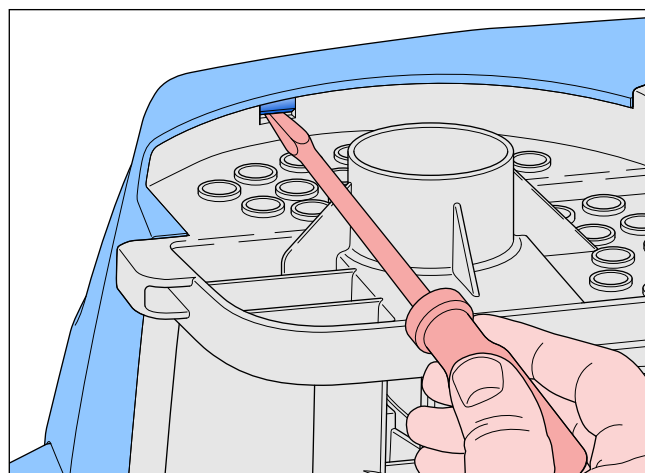
- The 3th screw B is hidden under the On/Off pedal (12), to remove the pedal use a screwdriver (see picture).



- Finally the last screw B that needs to be removed is situated at the bottom side of the appliance (see picture).



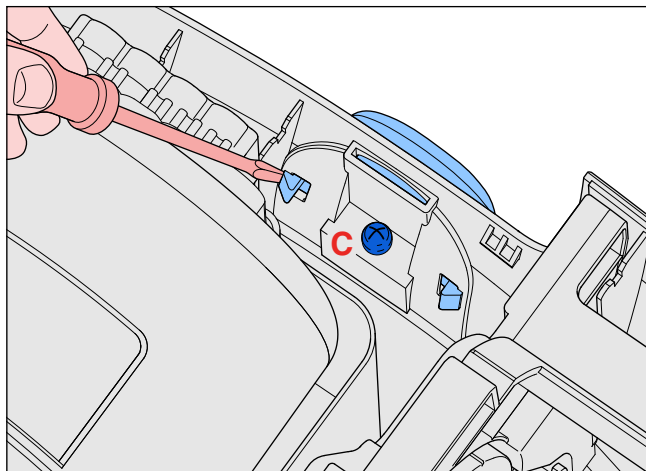
- To separate the top housing from the bottom housing release the snap connection behind the wheel at the cordwinder side (see picture).



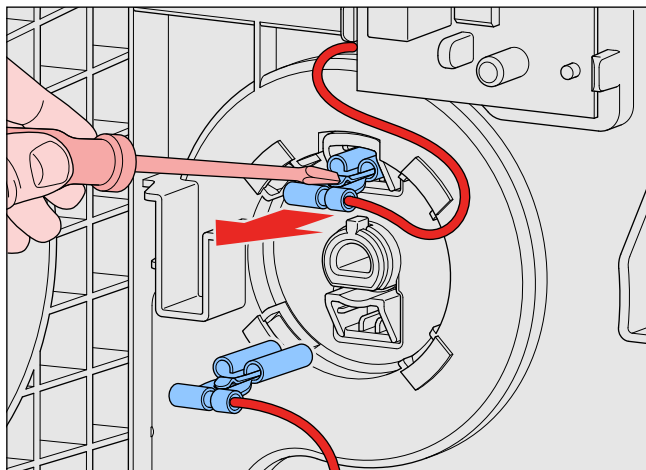
DISASSEMBLY- AND RE-ASSEMBLY ADVISE

FC8454/01

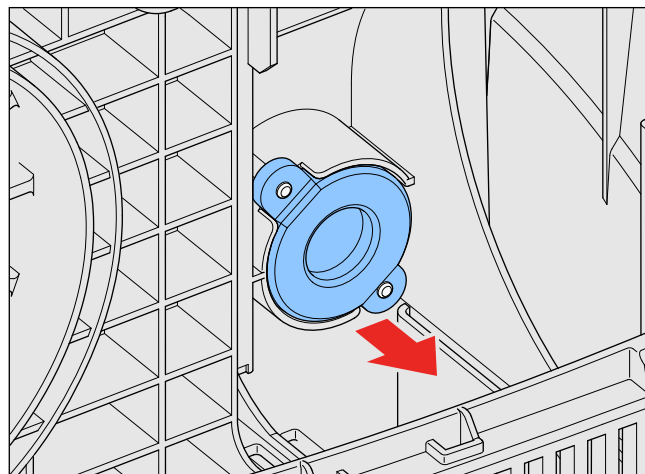
- To replace the parkhook (13), first remove Screw C, then by pushing the two lips with a screwdriver the parkhook can be removed (see picture).



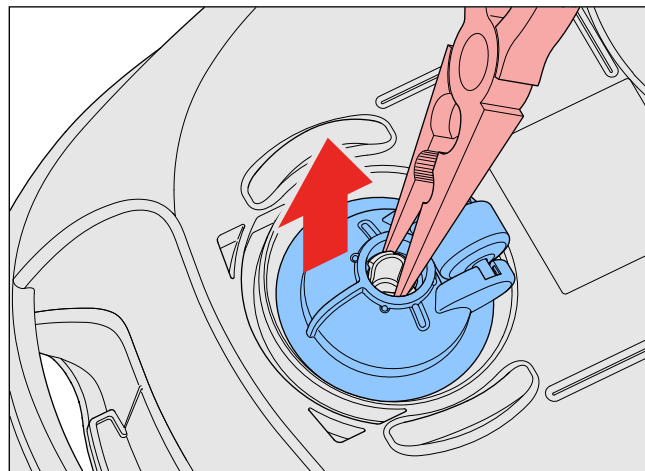
- To replace the cordwinder (20), first remove the wires, the locks can be unlocked with a screw driver (see picture).



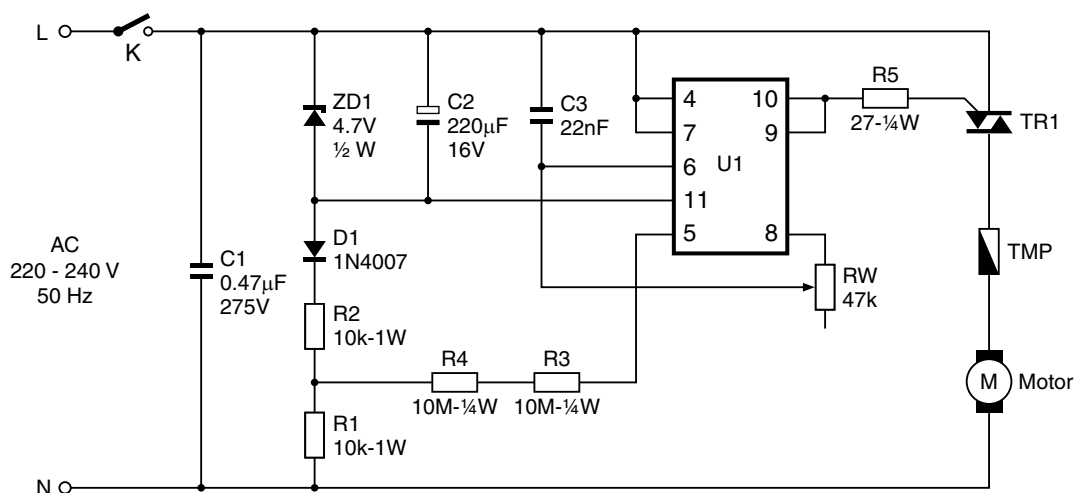
- The safety valve assy (21) can be clogged with dust, it can be easily taken out and replaced after the tophousing has been removed, it must be done from inside the bottom housing where the cordwinder is situated (see picture).



- When replacing the motor, make sure that the two red wires are placed underneath the motor.
- To replace the caster assy (11), squeeze the 2 dividers in the middle of the hole of the caster arm together with pliers, at the same time pull the caster assy off (see picture). The new caster assy can be snapped on in one single move.



ELECTRICAL DIAGRAM



Pos	Service code	Description	Remark
1	9965 100 51989	Dustcover assy	Deep black
2	4322 004 93701	Reusable dustbag*	
3	9965 100 52011	Dustbag holder	
4	9965 100 51988	Cover for handle	Deep black
5	9965 100 52007	Dustbag full indicator	
6	4322 004 93671	Motor protector filter	Hare
7	9965 100 52003	Inlet filter frame	
8	9965 100 51994	Cordwinder pedal (with spring)	Deep red
9	9965 100 51992	Slide knob	Deep red
10	9965 100 52004	Wheel assy	Deep black
11	9965 100 52008	Caster assy	Deep black
12	9965 100 51991	On/Off pedal	Deep red
13	9965 100 51987	Park hook	Deep black
14	4222 459 46371	Switch	
15	9965 100 54029	Top housing	Deep black
16	9965 100 52001	Potmeter PCBA	
17	9965 100 52005	Outlet grille	
18	4322 004 93681	Exhaust micro filter	Hare
19	9965 100 52014	Cordwinder lever	
20	4322 005 33091	Cordwinder 6 m EU plug	Hare
21	9965 100 52929	Safety valve	
22	9965 100 54028	Bottom housing	Deep black
23	4322 006 24691	PCBA 220 - 230 V	Hare
26	4322 006 99231	Motor 230 V / 50 - 60 Hz (2000 W)	Kingclean
27	4322 004 24521	Telescopic tube	Aluminium
28	4322 004 24511	Hose assy	Dark raven 80236
29	4222 459 46621	Small nozzle	
30	4222 459 46641	Crevice nozzle	
31	4322 004 24531	All floor nozzle Plastic plate	Dark raven 80236
32	9965 100 51993	Parquet brush	Dark raven
33	9965 100 52009	Springs of the buttons	

* Only in specific versions

