



Philips Consumer Lifestyle

# Service Manual

## PRODUCT INFORMATION

### Safety

- This product meets the requirements regarding interference suppression on radio and TV.
- After the product has been repaired, it should function properly and has to meet the safety requirements as officially laid down at this moment.

## TECHNICAL INFORMATION

- Colour : Deep Black
- Power consumption : 1800 W
- Action radius : 9 m
- Cord length : 6 m
- Filtration : Washable double foam filter  
HEPA 10
- Coupling : Conical
- Wheels : Plastic
- Dimensions appliance : 240 x 410 x 240 mm
- Weight : 4.5 kg

## ACCESSORIES

- Nozzle : Multi nozzle
- Special nozzle : Parquet nozzle
- Tubes : Metal 2-piece Telescopic Tube
- Accessories : Crevice nozzle and Small nozzle

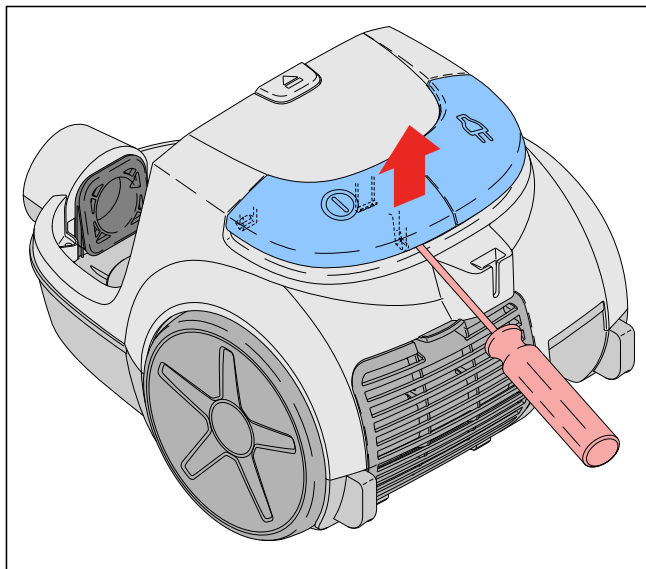
## REPAIR INSTRUCTION

- No specific issues

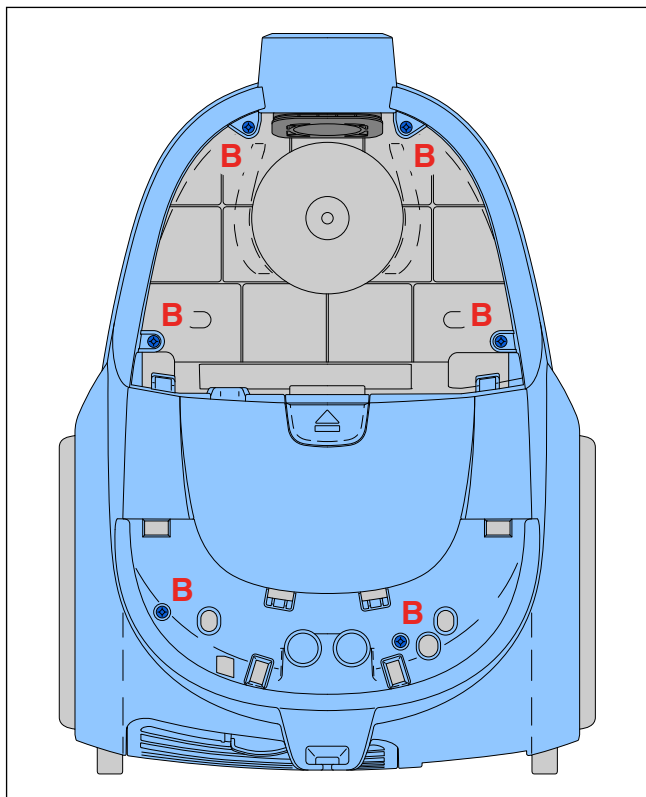
## OPTIONAL (accessories)

- No specific issues

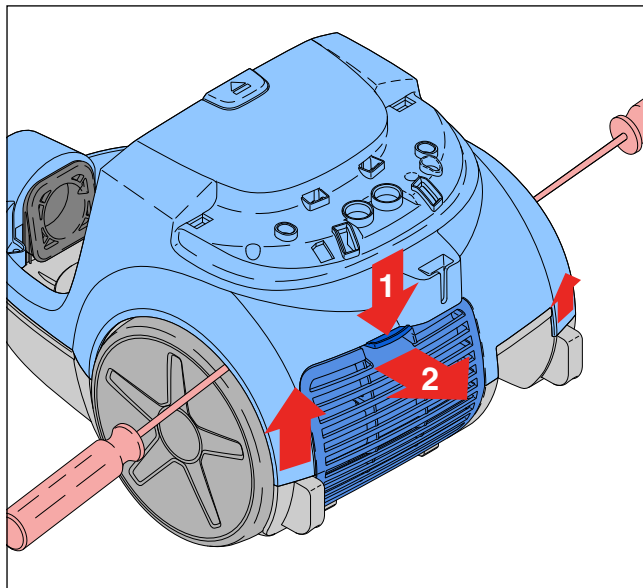
- To open the appliance, first remove the bucket by pushing the Unlock button and lifting the bucket straight upwards.
- To disassemble the Upperhousing:  
Remove the CW Button and On/off button by using a screwdriver to push the buttons upwards, in this way the clicknocks can be loosened. (see picture)



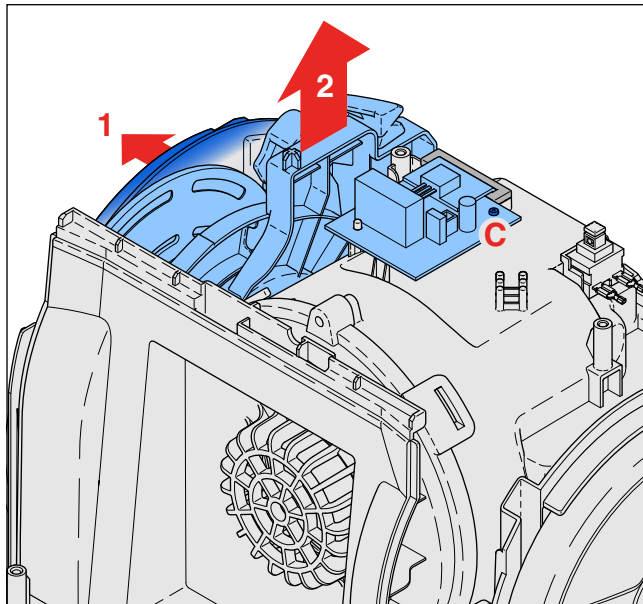
- Remove the 6 screws (B), two are positioned under the buttons. (see picture)



- Remove the Exhaust grille and filter and “unclick the two snap locks” on the backside with a screwdriver. (see picture)



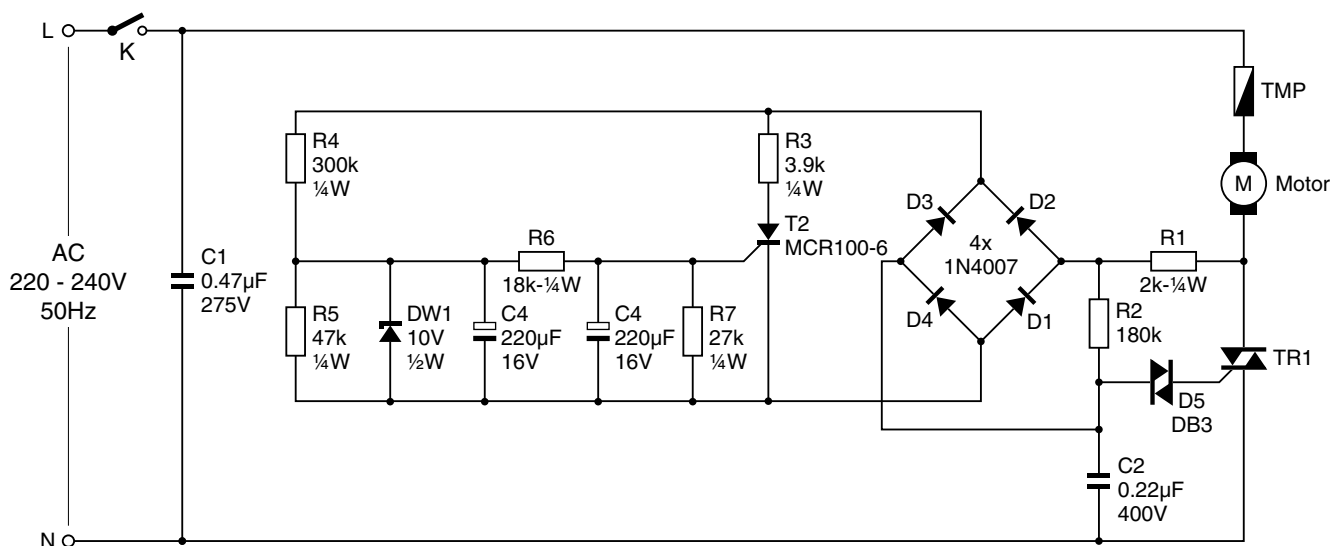
- The Upperhousing can now be separated, some force may be needed.
- The Motor housing is secured with 5 screws, to reach all screws the Cordwinder must be removed first.
- First detach the PCB assy from the Motor housing by removing screw (C). (see picture)
- To be able to pull the Cordwinder out you must create more space at the side of the wheel, do so by pulling the Lower housing a little bit outwards. (see picture)



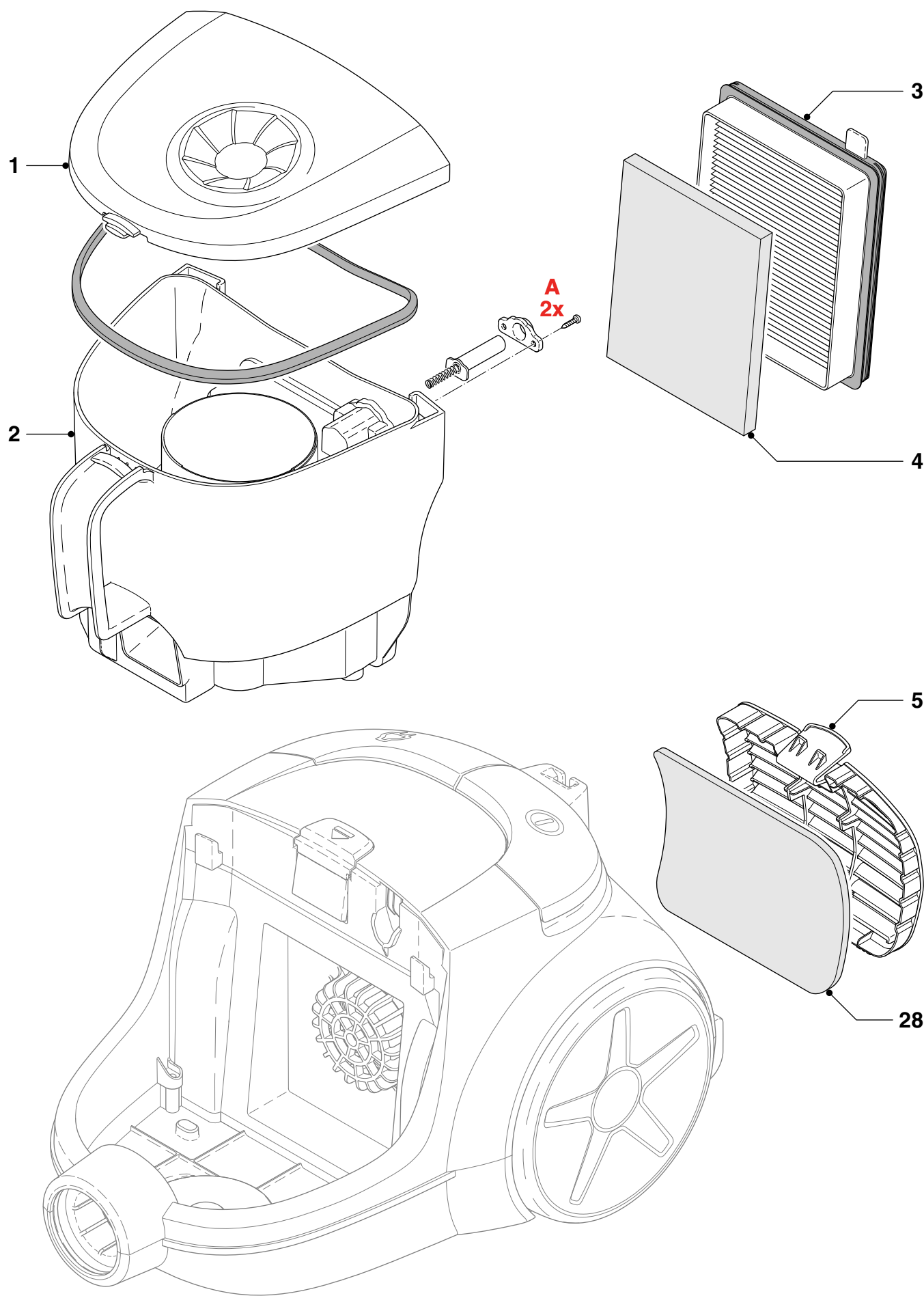
- Remove the 5 screws (D) and take the Motor housing out of the Lower housing. (see exploded view at page 7-9)

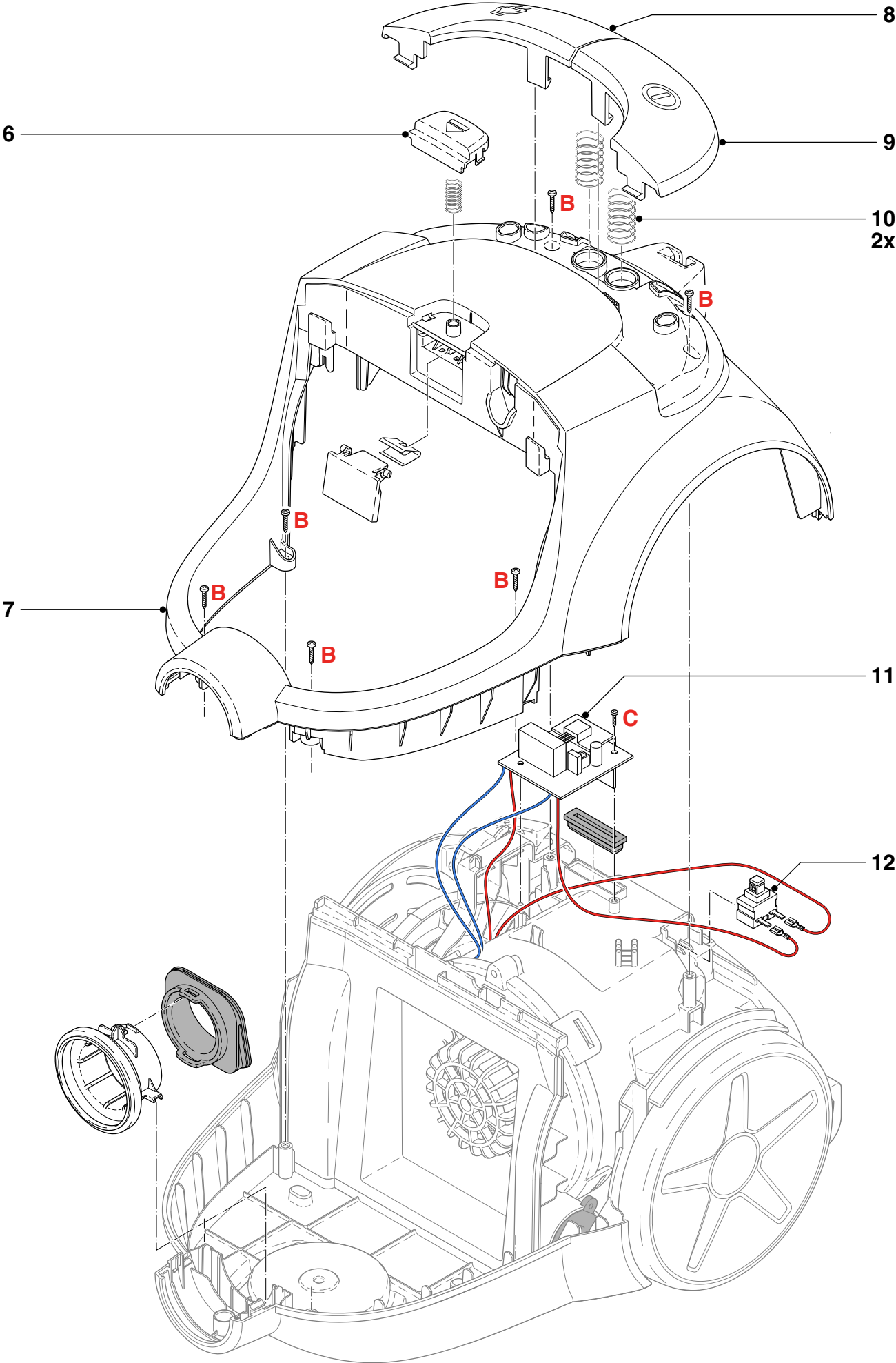
- The Motor housing is fixed around the motor with two screws (**E**) and clickknocks all around and, these can easily be detached and clicked in again while assembling.
- Working procedure for re-assembling the Upper housing:  
First click the snap locks on the backside of the Upper housing then assemble the frontside and tighten the 6 screws (**B**).

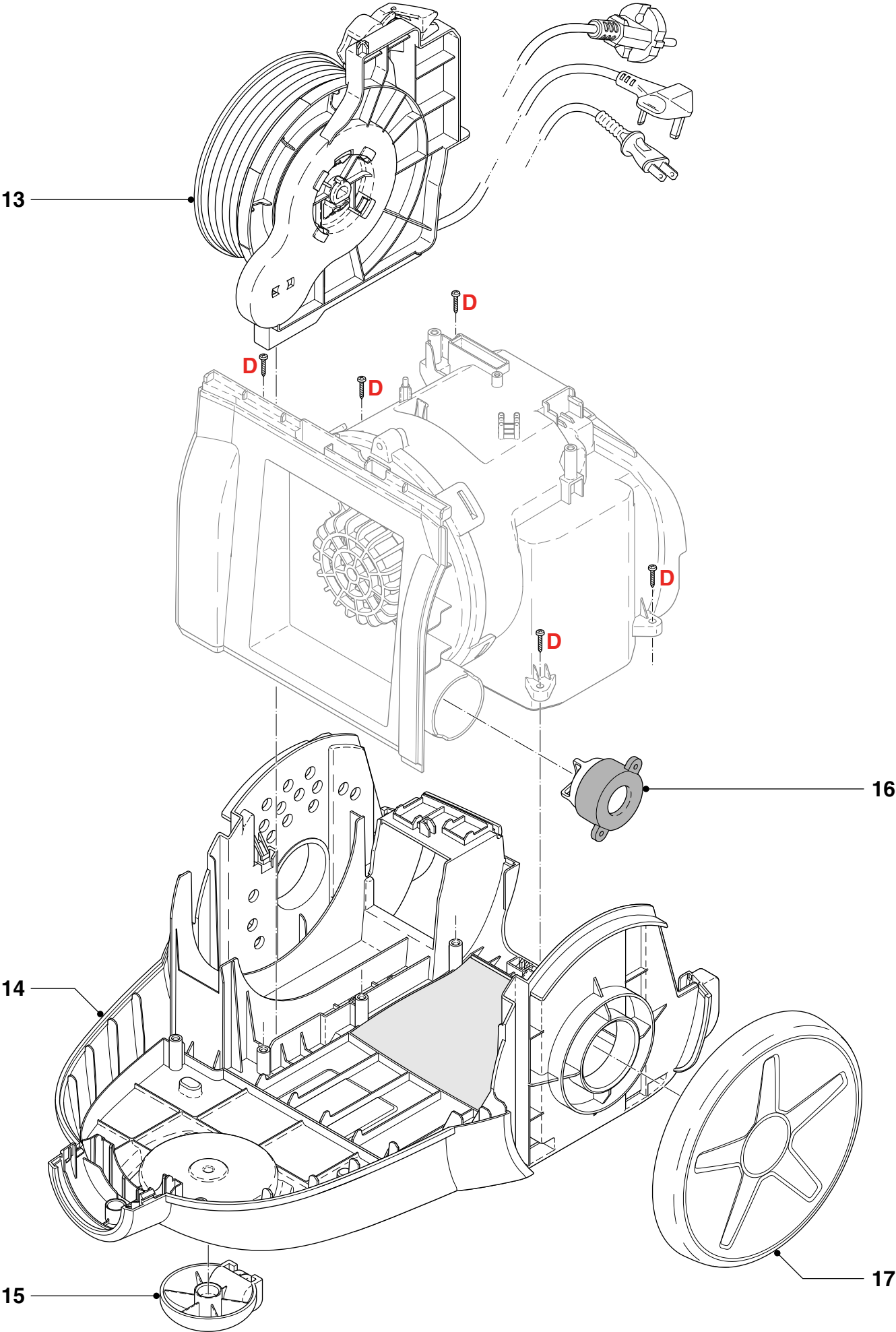
## CIRCUIT DIAGRAM



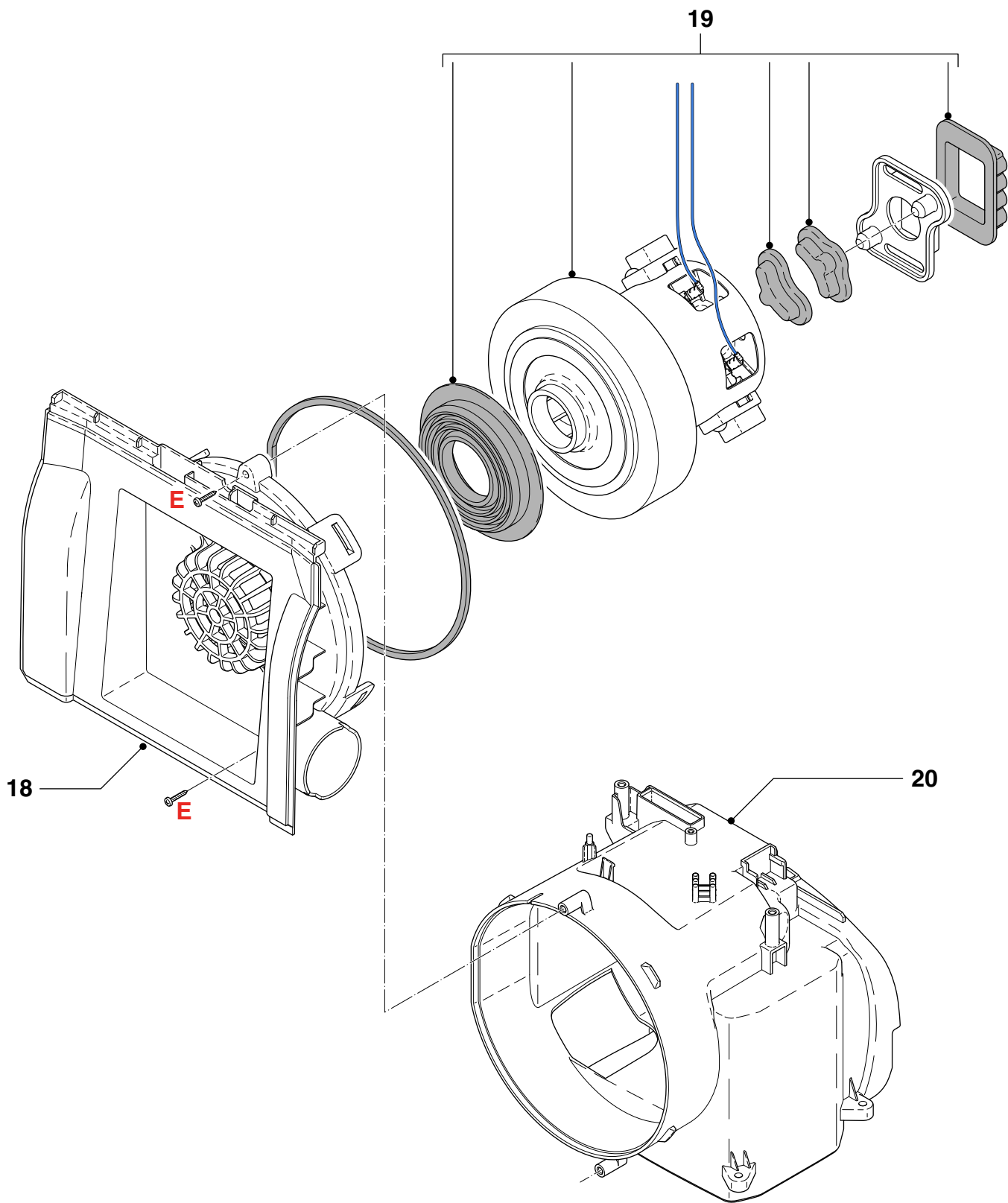
Pos	Service code	Description	Remark
1	9965 100 60936	Lid for Bucket	
2	9965 100 60947	Bucket incl. Cone	
3	4322 004 93801	HEPA filter	Buffalo - Mistral
4	4322 004 93811	Sponge	Buffalo - Mistral
5	9965 100 60938	Exhaust grille	
6	9965 100 60946	Unlock button for Bucket	
7	9965 100 61666	Upper housing	Deep Black 80231
8	9965 100 60937	CW Button	
9	9965 100 60952	On/Off button	
10	9965 100 60944	Spring for Button	
11	4322 006 24881	PCBA	Buffalo
12	9965 100 60949	Switch	
13	4322 005 34091	Cordwinder 6 m / 4.8 plug	Buffalo
	4322 005 34151	Cordwinder 6 m / UK/HK plug	
	4322 005 35691	Cordwinder 6 m / PRC plug	Buffalo
14	9965 100 60939	Lower housing	Deep Black
15	9965 100 60941	Casterdish assy	
16	9965 100 60945	Safety valve	
17	9965 100 60948	Wheel assy	
18	9965 100 60942	Motor Front	
19	4322 009 00721	Service assy Motor (1800 W)	Kingclean
20	9965 100 60951	Motorhousing	
21	4322 004 25021	Hose	Buffalo - Mistral
22	4322 004 25041	Handgrip conical 35 mm	Deep Black 80231
23	4322 004 25061	Metal Telescopic Tube conical 35 mm	
24	4322 004 25121	Smal nozzle conical 35 mm	Deep Black 80231
25	4322 004 25111	Crevice nozzle conical 35 mm	Deep Black 80231
26	4322 004 25081	All floor nozzle # 92 conical 35 mm	Deep Black 80231
27	4322 004 25141	Parquet nozzle conical 35 mm	Deep Black 80231
28	4322 004 93911	Exhaust Filter Sponge	Buffalo



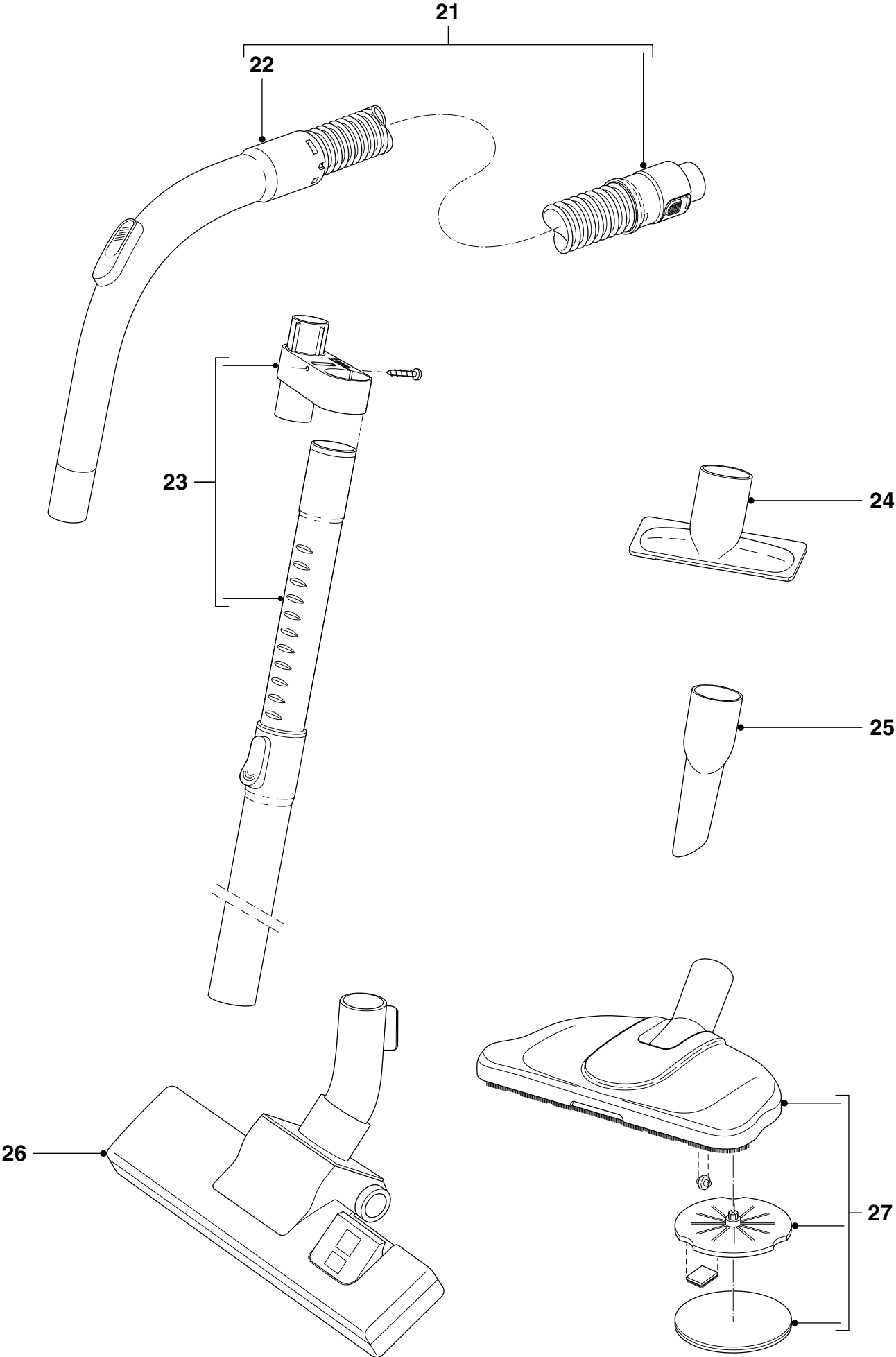












## Version history

Version 1.1 : FC8473/01 / FC8473/61 initial release.

14/02 Version 1.2 : Update picture removing exhaust grille in Disassembly- and Re-assembly advise.

14/04 Version 1.3 : In Parts List and Exploded view: Added Pos. 28, 4322 004 93901 Exhaust Filter Sponge Buffallo.

14/04 Version 1.4 : In Parts List: Changed Pos. 28, 4322 004 93901 Exhaust Filter Sponge Buffallo into 4322 004 93911.

14/09 Version 1.5 : Added new version: FC8473/81

In Parts List: Added Pos. 13, 4322 005 35691 Cordwinder 6 m / PRC plug Buffallo

14/11 Version 1.6 : In Parts List: Changed Pos. 4, 4322 004 93821 Micro filter Mistral into 4322 004 93811 Sponge Buffallo - Mistral.

16/05 Version 1.7 : In Exploded view: Changed Pos. 19.