



Philips Consumer Lifestyle

# Service Manual

## PRODUCT INFORMATION

- This product meets the requirements regarding interference suppression on radio and TV.
- After the product has been repaired, it should function properly and has to meet the safety requirements as officially laid down at this moment.

## TECHNICAL INFORMATION

- Colour : Deep Black & Basic Blue
- Battery type : Li-Ion
- Battery voltage : 12.8 V
- Charging time : 6 hour(s)
- Runtime : 80 min.

### Usability

- Threshold climbing : 13 mm
- 24-hour scheduling
- Infrared sensors
- Types of Floors : Hardfloor
- Smart detection system : 12 sensors

## Nozzles and accessories

- Exhaust filter, AC power adaptor, Side brushes (2 pairs)

## Dimensions & weight

- Dimensions : 60.1 x 330 mm
- Product weight : 1.53 kg
- with packaging : 2.9 kg

## Accessories included

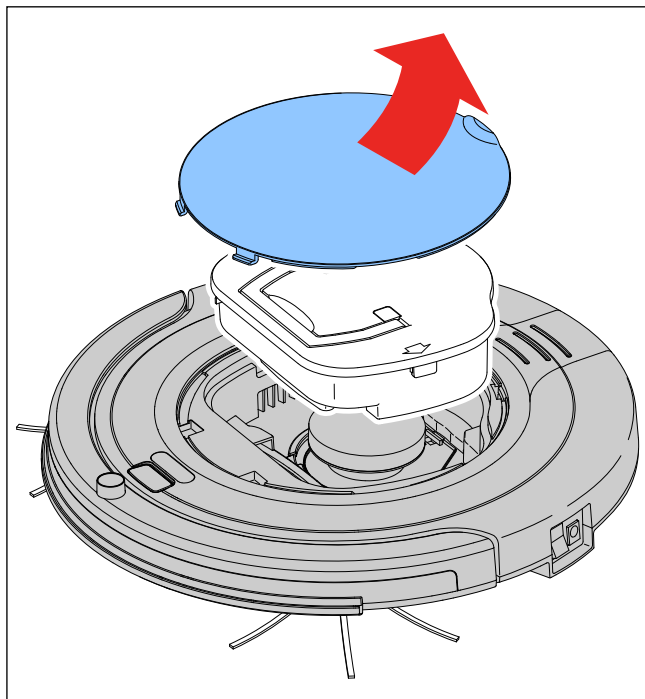
- Docking station

## OPTIONAL (accessories)

- No specific issues

## DISASSEMBLY - AND RE-ASSEMBLY ADVISE

- First make sure that the appliance is unplugged.
- To empty and/or replace the Dustbin assy, the Top Cover has to be removed (see picture).



## FC8700/01 / FC8700/71

- Turn the appliance upside down .
- The brushes can easily be pulled out and replaced, after hearing the < click> the brush is placed in a correct way.
- Remove the battery cover by removing the 2 screws **A**, the battery can now be removed or replaced.
- To open the appliance:  
First remove the cover of the Bumper assy by removing the 4 screws **B**.  
Remove the Upper housing by removing the 6 screws **C**, 2 screws are positioned in the battery compartment, **be aware** to unplug the wire.
- Now the wheel can easily be pulled out and be replaced if necessary.  
Remark: notice that each wheel assy have different wires to avoid mis-repair.
- To replace the inner parts of the Bumper assy:  
Lift the Main PCB by removing the 4 screws **D**, now you can replace the Bumper bracket by removing the 2 screws.
- To replace the Fan motor:  
Turn the Bottom housing upside down and remove the 2 screws **F**, unplug the connector. Now the Fan motor can be replaced and re-connected.

## REPAIR INSTRUCTION

### IR Sensors calibration for replacing PCBA

Purpose: IR Sensors have to be calibrated if replacing PCBA. In order to avoid to move backward and abnormally.

#### Calibration Steps:

Step 1: Power off device and short calibration enable pin to ground pin with jumper(wire) shown as Fig. 1 and Fig. 2.

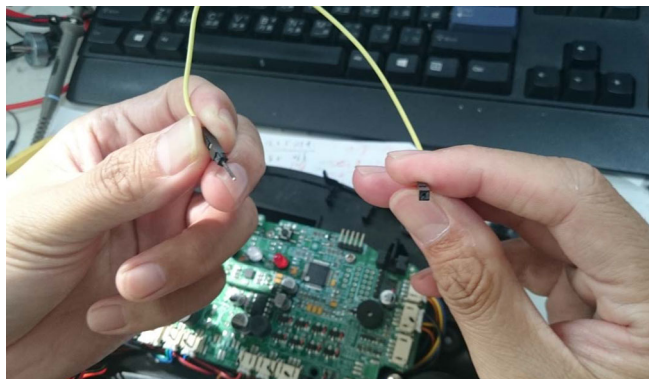


Fig. 1

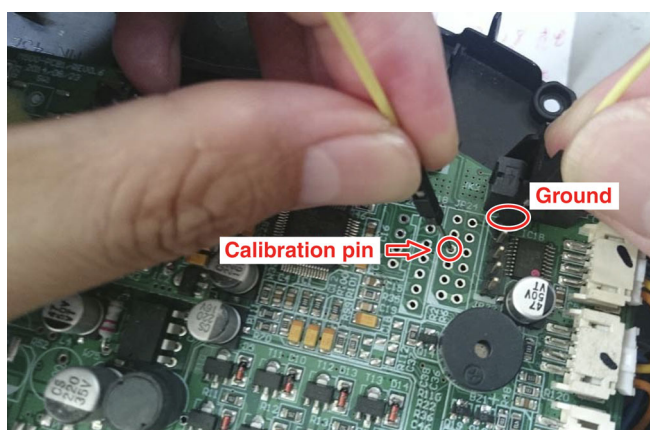
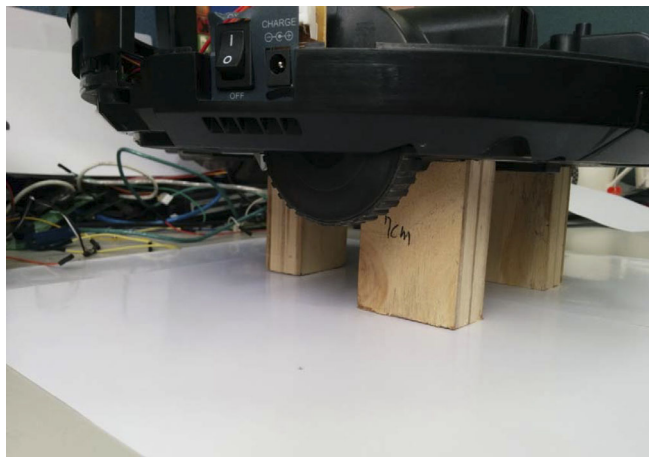


Fig. 2

Step 2: Put robot 7 cm height above calibration surface (AA papers).



Step 3: Power on Robot cleaner wait 5 seconds. Then the calibration is done. After finished the calibration, remove the jumper(wire).

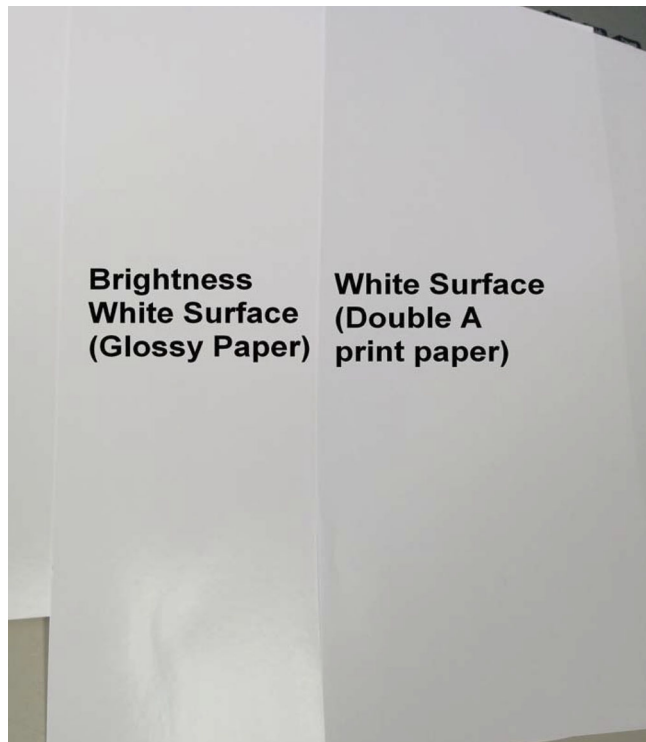
## FC8700/01 / FC8700/71

After calibration the robot need to be tested for the drop-down sensors: This can be done on a table. If the robot does not fall from the table the calibration was done in a proper way.

#### Remark:

Material for white color reference:

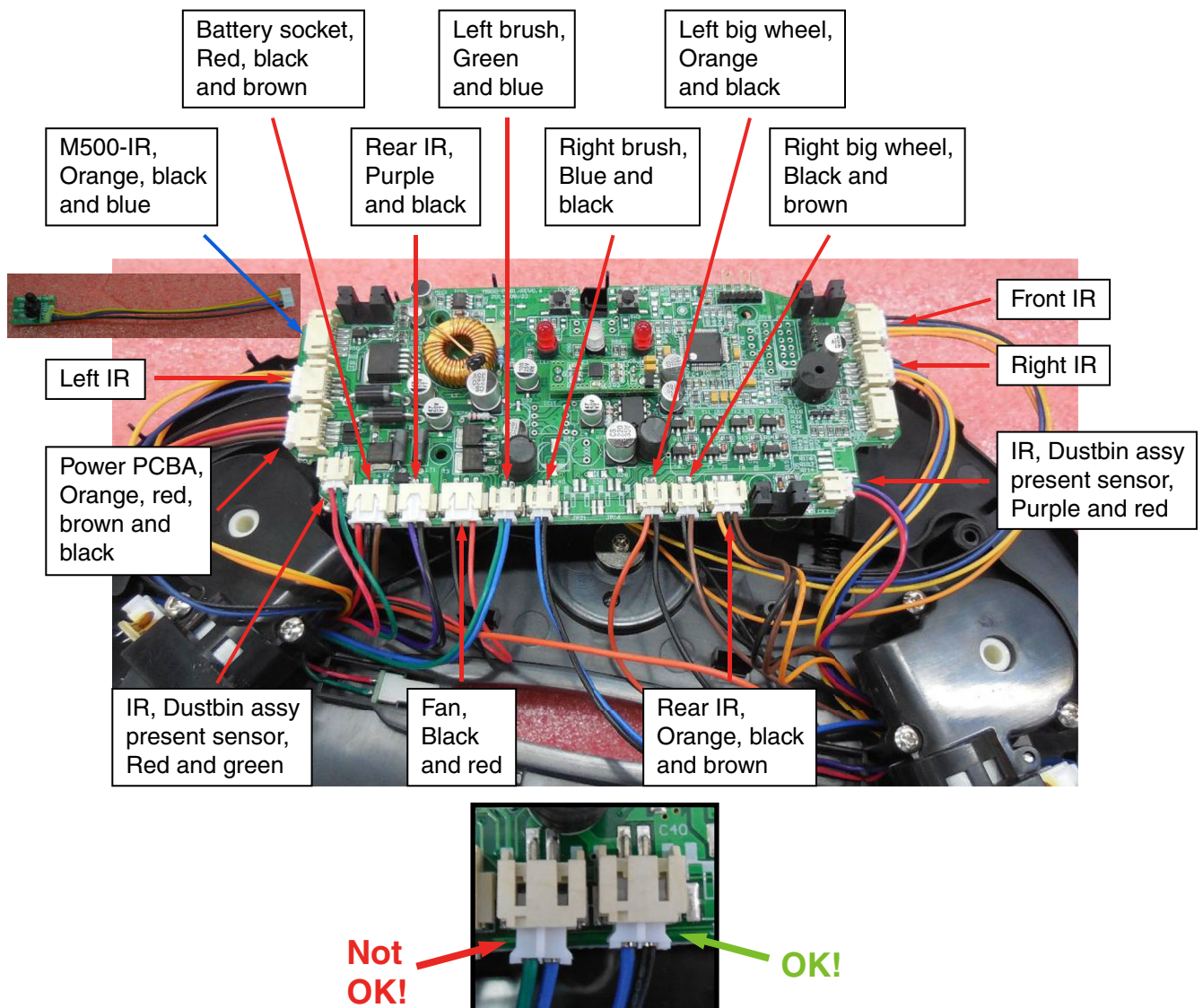
Using AA white paper or glossy paper as calibration surface.



## REPAIR INSTRUCTION

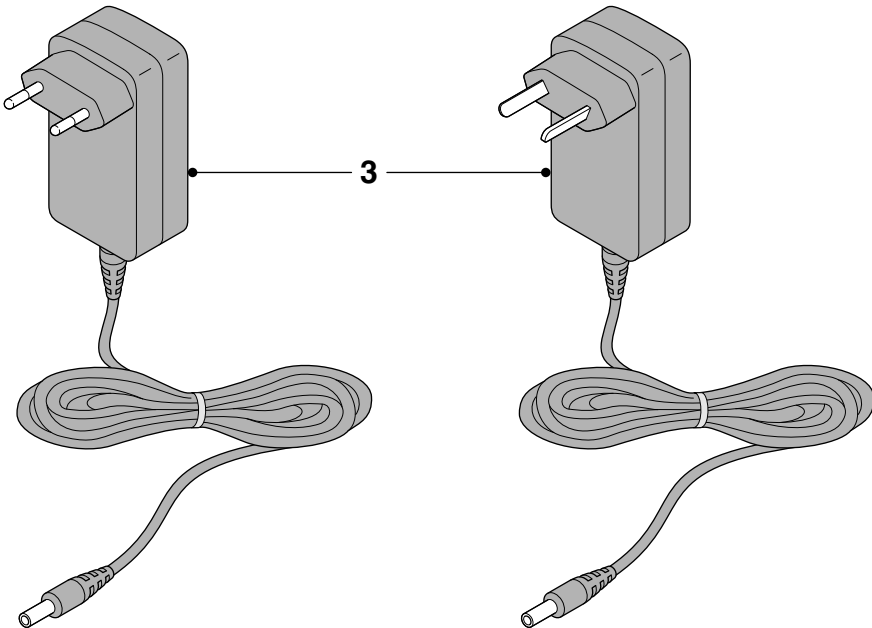
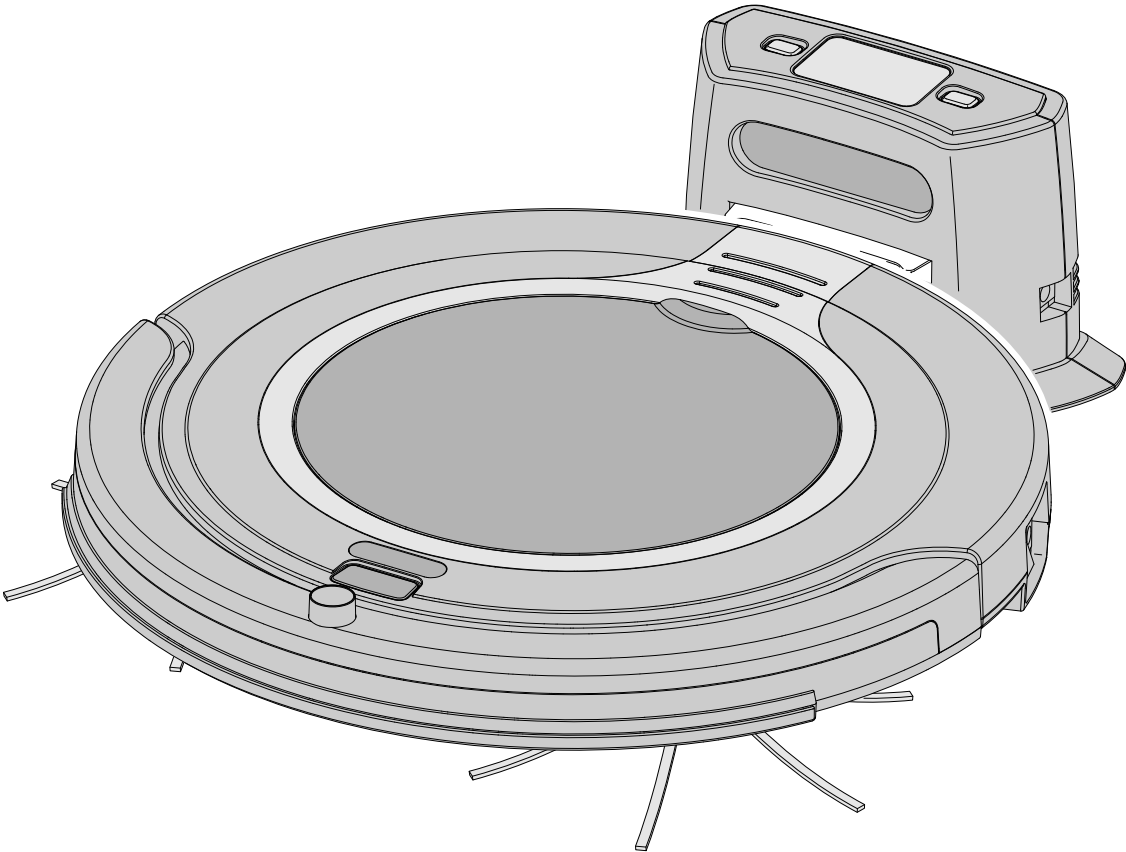
# FC8700/01 / FC8700/71

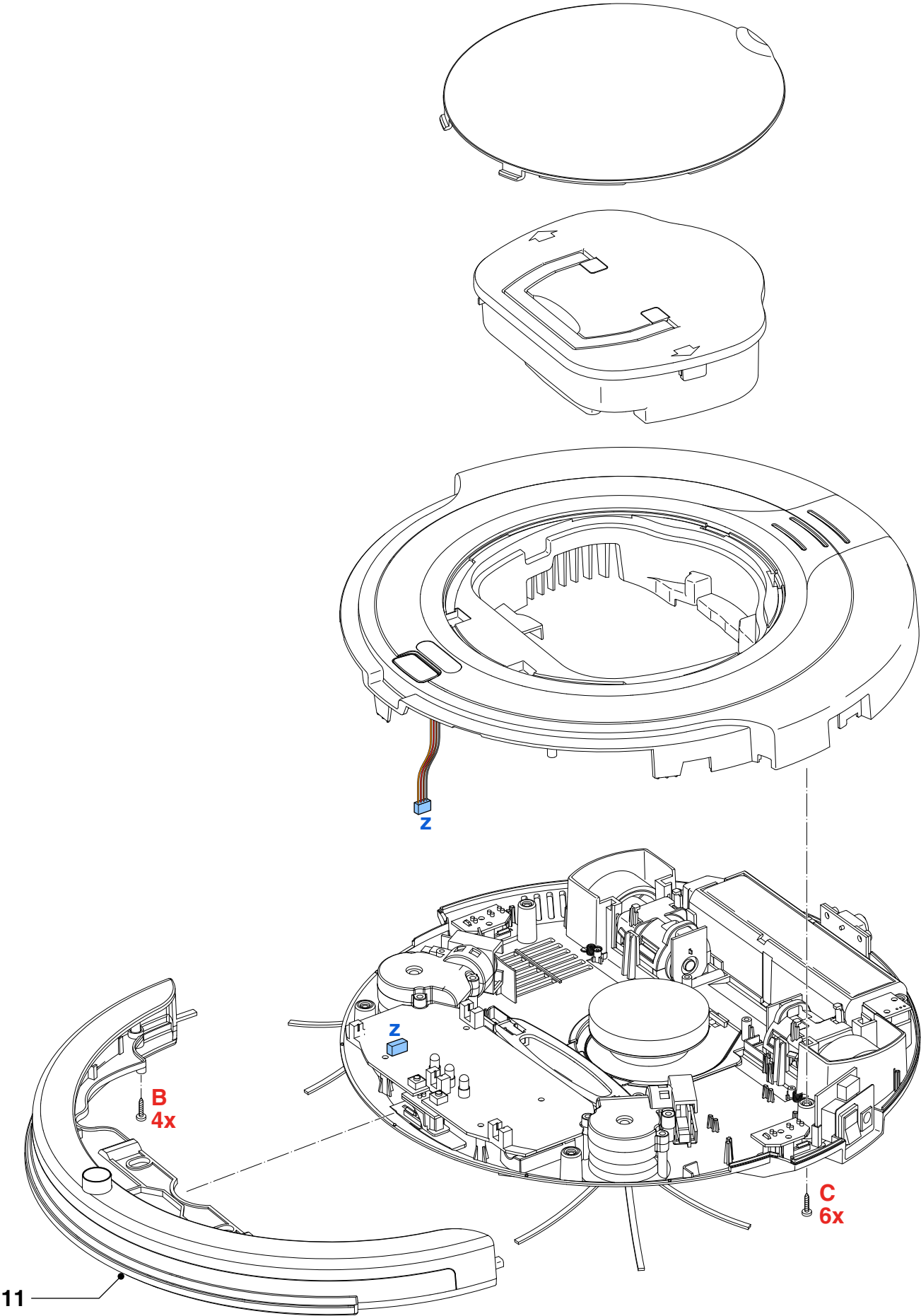
### Wiring diagram





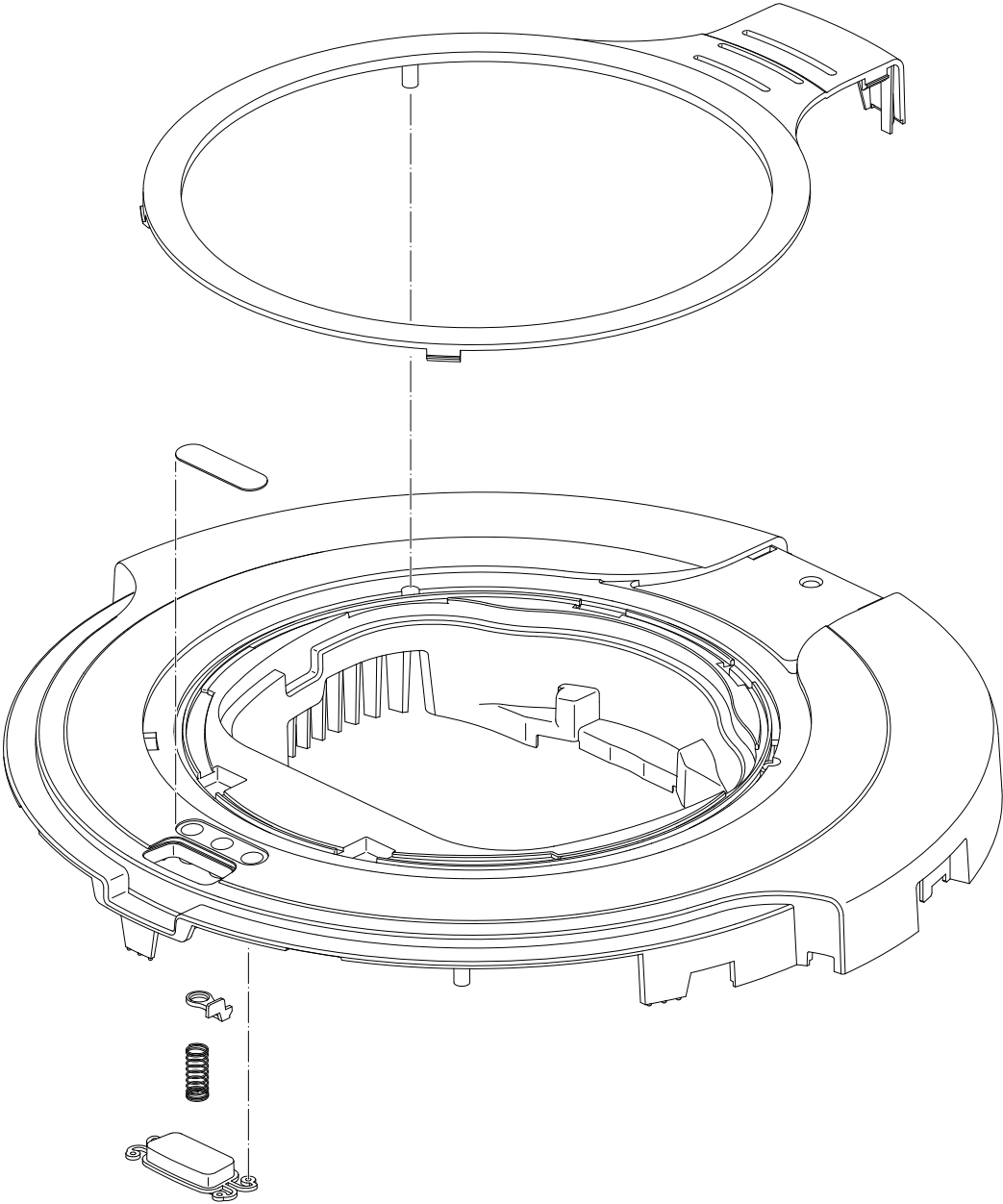
Pos	Service code	Description	Remark
1	4322 006 67901	Suction motor assy A	
2	4322 006 22901	Recharable battery 1300 mAh - 12.8 V	Super Li-Ion
3	4322 006 09961	Switching adaptor 24 V - 1000 mA	Euro plug
	4322 006 08901	Switching adaptor 24 V - 1000 mA	AU/NZ plug
	4322 006 20951	Switching adaptor 24 V - 1000 mA	Korea plug
4	4322 006 23111	Docking station A	
5	4322 004 25961	Side brush	
6	4322 006 67941	Side brush motor assy Left	
7	4322 006 67951	Side brush motor assy Right	
8	4322 005 36651	Dustbin assy A	
9	4322 004 94152	Filter Hawk A	
10	4322 005 36681	Big wheel assy M500 A	
11	4322 005 36711	Frint bumper assy A	
12	4322 006 25401	Power PCBA	
13	4322 006 25811	Main PCB	FC8700

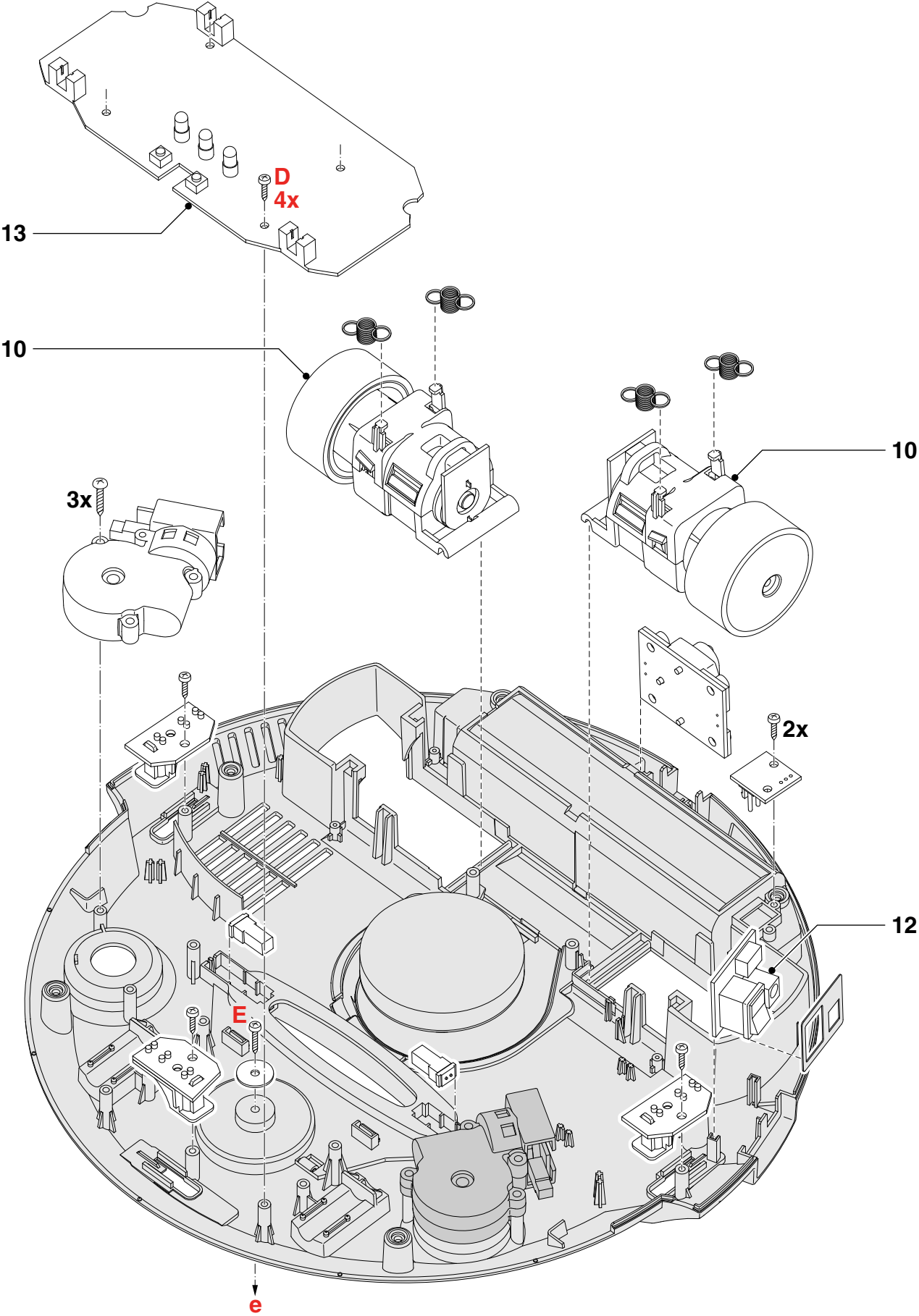


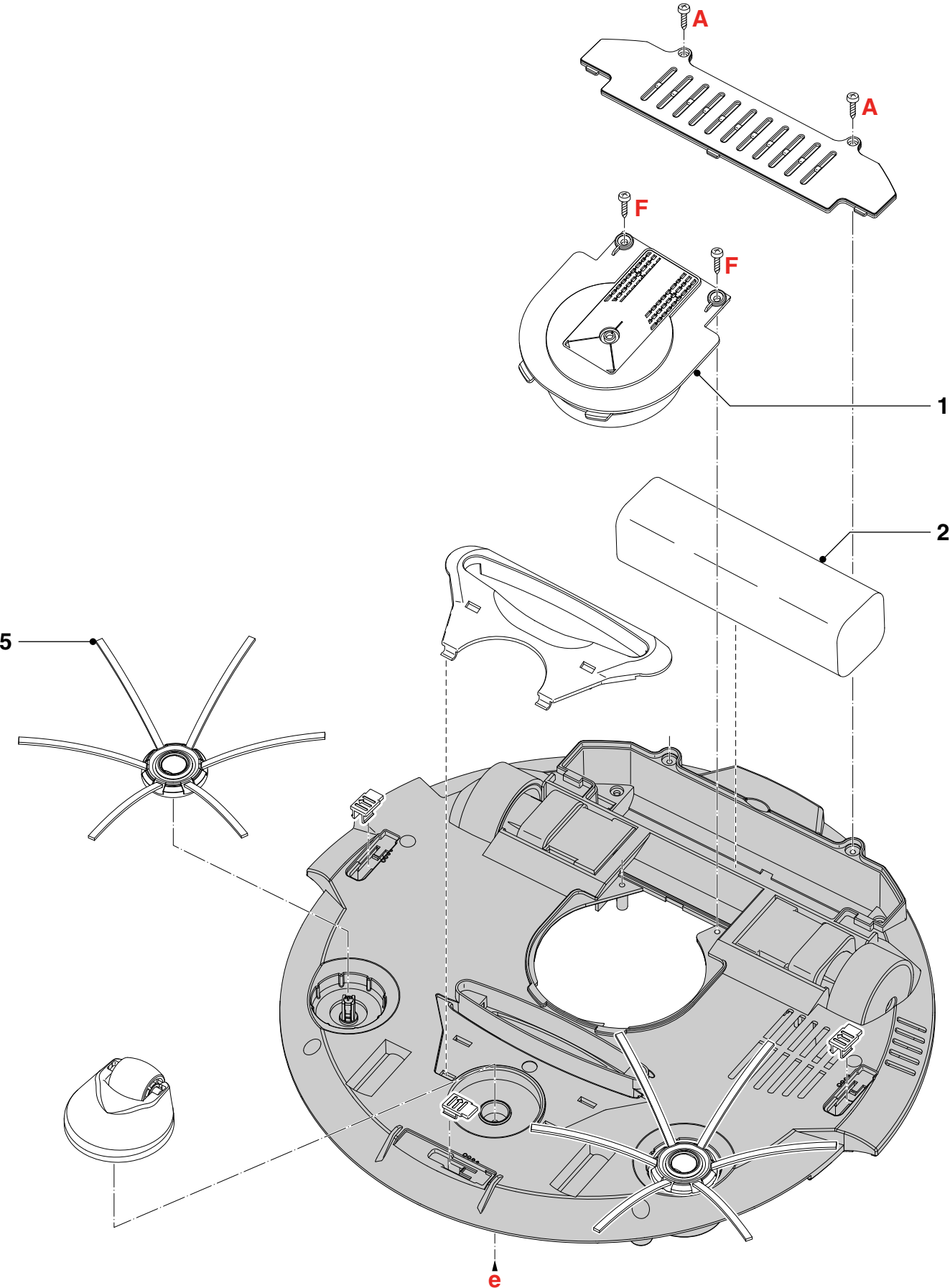


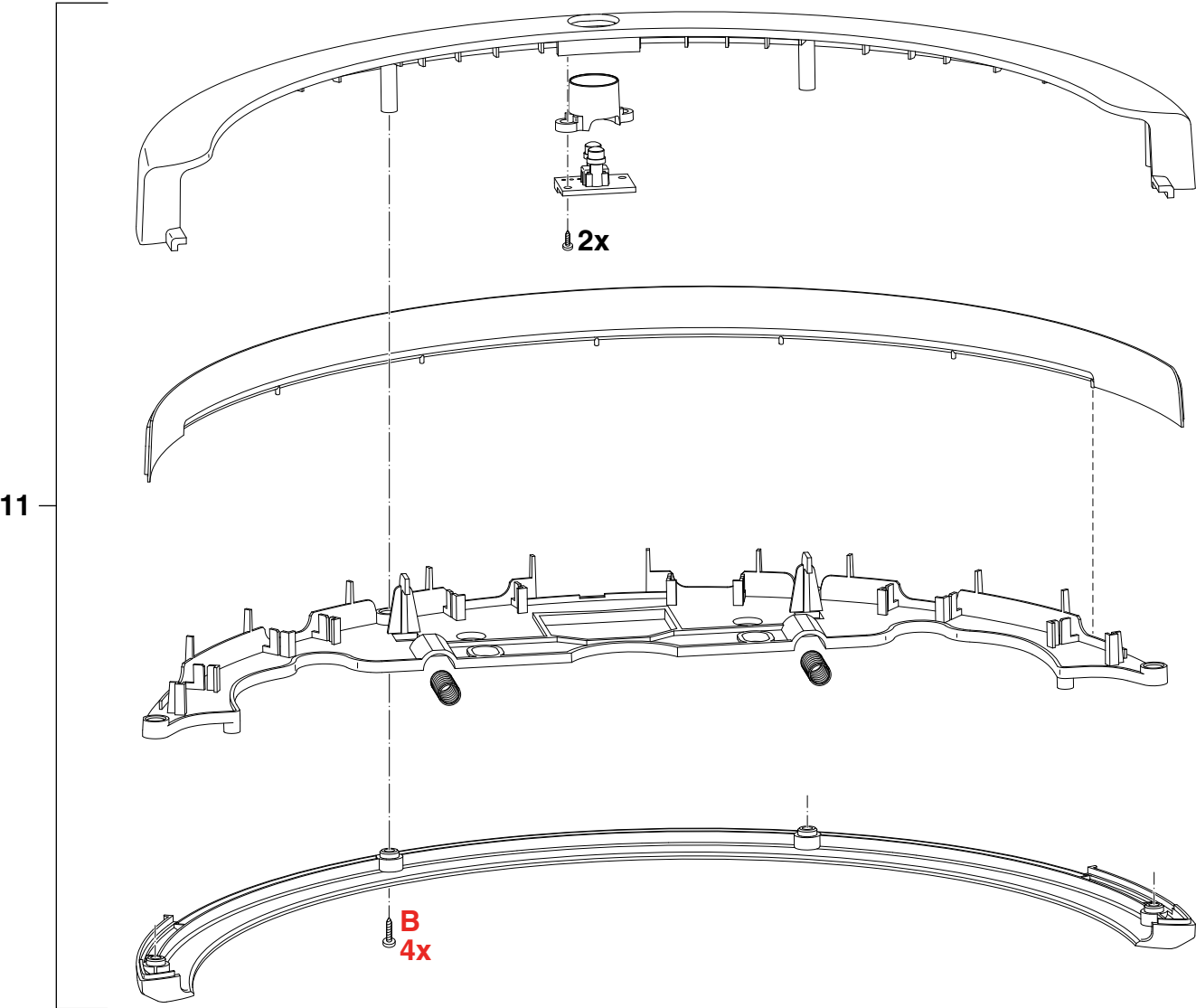


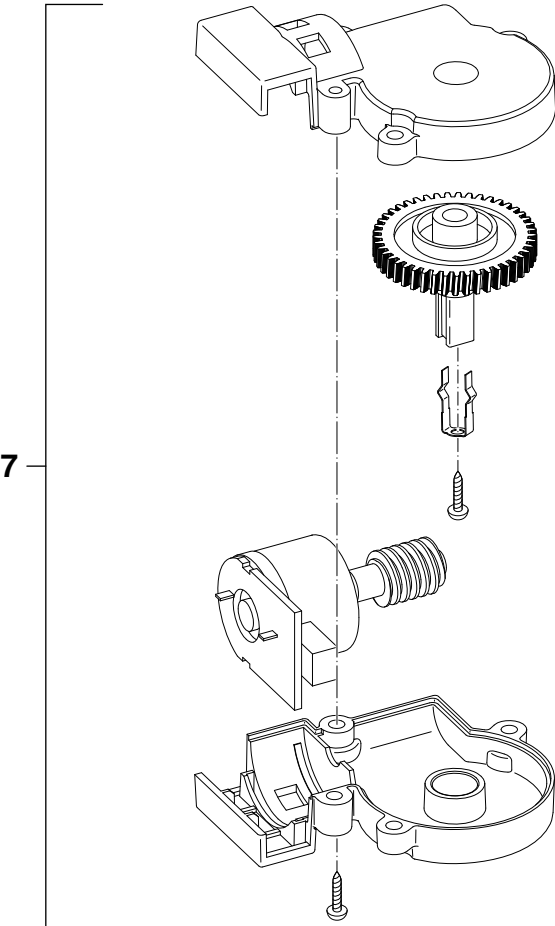
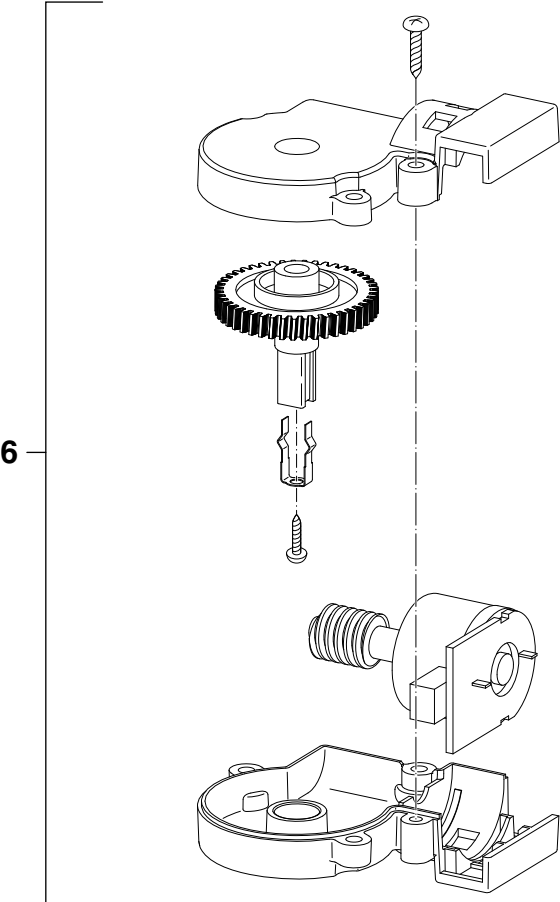


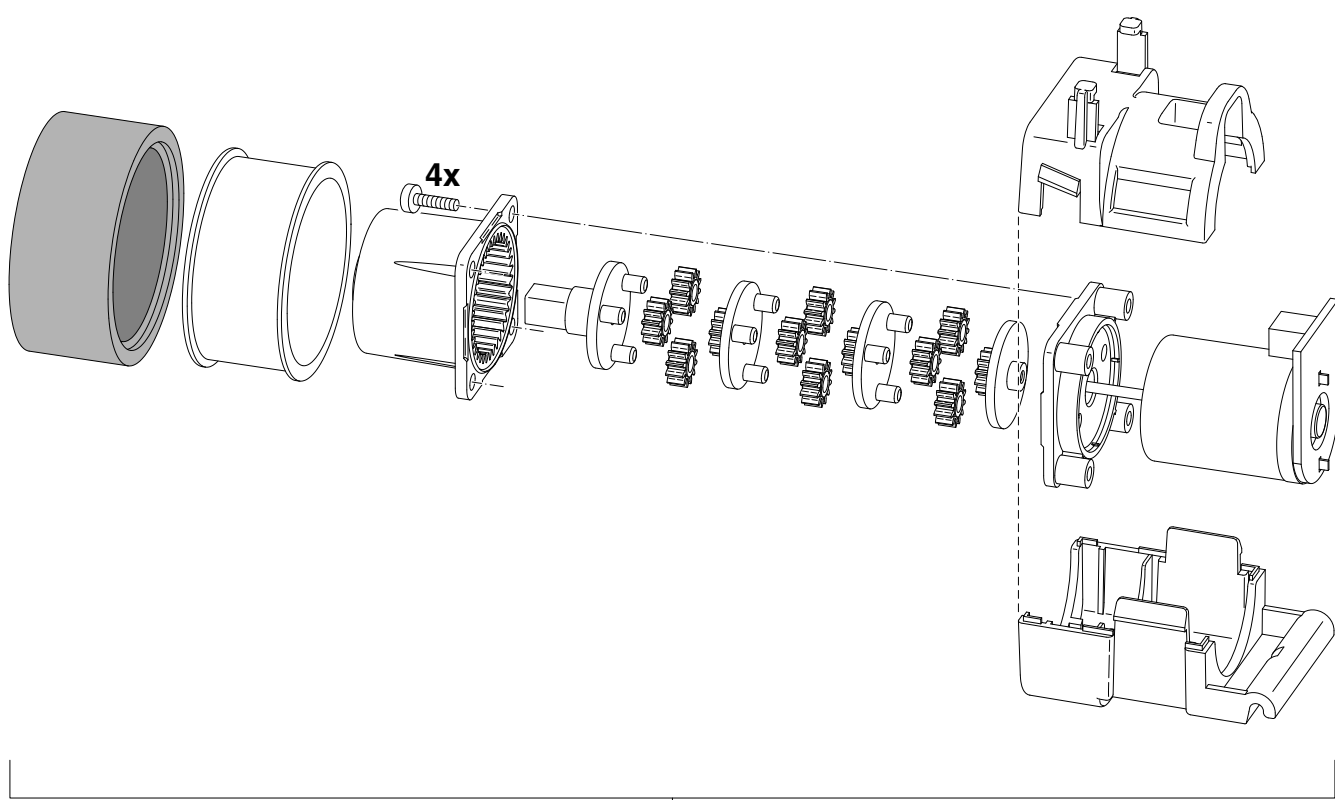




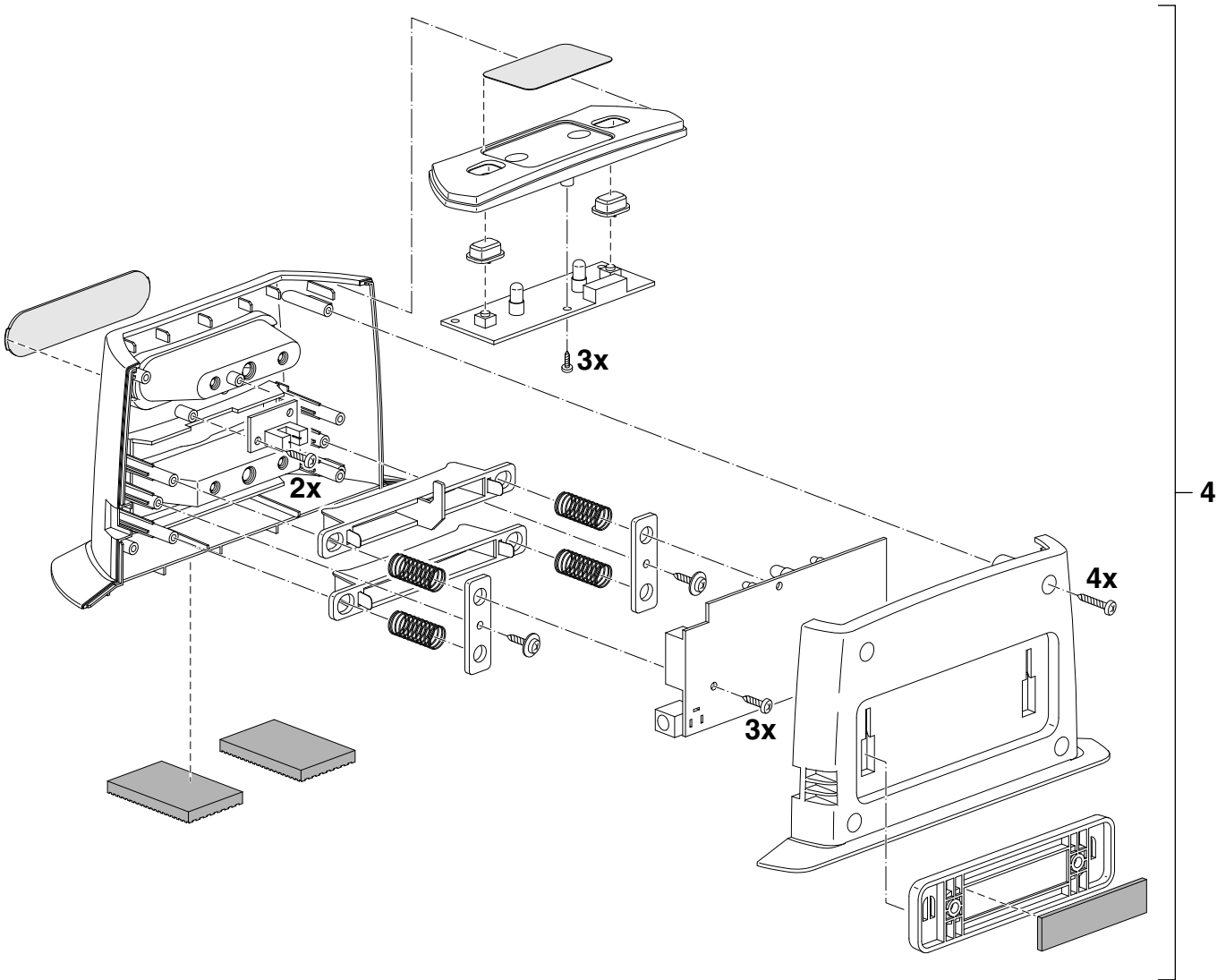












# FC8700/01 / FC8700/71

## Version history

Version 1.1 : FC8700/01 initial release.

Version 1.2 : Added new version: FC8700/71.

In Parts List and Exploded view: Added Pos. 3:

4322 006 08901 Switching adaptor 24 V – 1000 mA AU/NZ plug.

Version 1.3 : In Parts List at Pos. 9, changed 4322 004 94151 into 4322 004 94152.

Version 1.4 : In Parts List at Pos. 13, changed 9965 100 72827 into 4322 006 25811.

Added on page 3: IR Sensors calibration for replacing PCBA.

Added on page 4: Wiring diagram.

Version 1.5 : In Parts List: Added Pos. 3: 4322 006 20951 Switching adaptor 24 V – 1000 mA Korea plug.