



Philips Consumer Lifestyle

# ServiceManual

## PRODUCT INFORMATION

- This product meets the requirements regarding interference suppression on radio and TV.
- After the product has been repaired, it should function properly and has to meet the safety requirements as officially laid down at this moment.

## TECHNICAL INFORMATION

- Colour : Valentine red
- Power consumption : 2000 W
- Suction Power : 340 W
- Noise level : < 82 dBA
- Action radius : 11 mtr
- Cord length : 8 m
- Filtration : Power cyclone  
EPA 10 washable filter
- Dimensions appliance : 505 x 292 x 292 mm
- Dimensions F-box : 650 x 330 x 310 mm
- Weight : 5.5 kg

## ACCESSORIES

- Nozzle : Tai Chi all purpose nozzle
- Special nozzle : Super parquet nozzle
- Tubes : Metal lacquered 2 pcs. telesc. tube
- Accessories : Crevice nozzle, Small nozzle and Brush
- Accessory storage : Accessory clip on tube
- Coupling : Button coupling

## REPAIR INSTRUCTION

- No specific issues

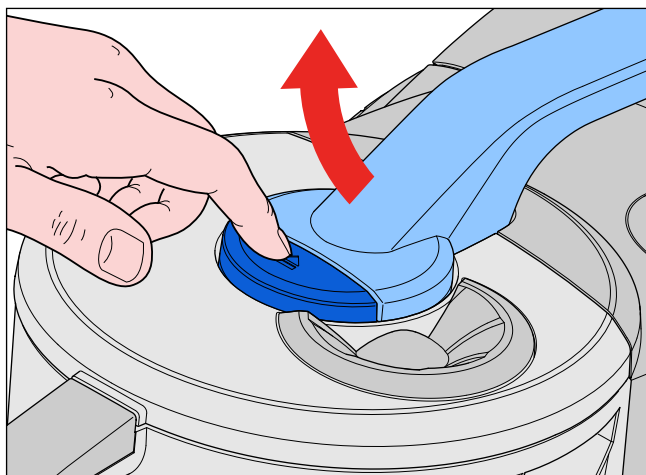
## OPTIONAL (accessories)

- FC8038 : HEPA13 washable Exhaust filter

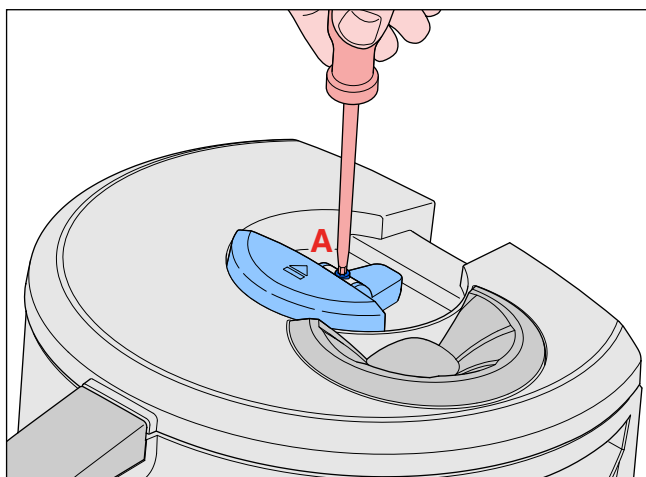
## DISASSEMBLY- AND RE-ASSEMBLY ADVISE

FC8768/01

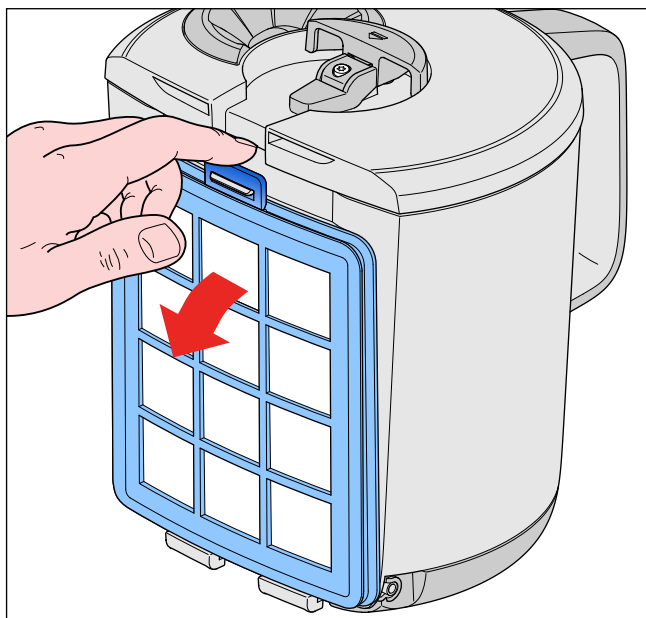
- To remove the Bucket, unlock the top handle by pushing the button on the lid of Bucket (see picture).



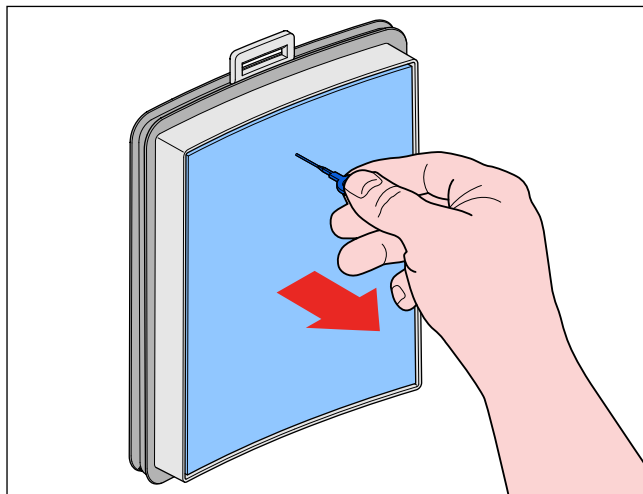
- The button (3) on the lid is a spare part, it can be replaced by removing screw A (see picture).



- The bucket can only be placed back with the lid mounted and positioned in the correct way, otherwise the handle cannot be closed.
- The Inlet filter assy (4) on the front (motor side) of the Bucket can be removed by pulling the lip at the top (see picture).



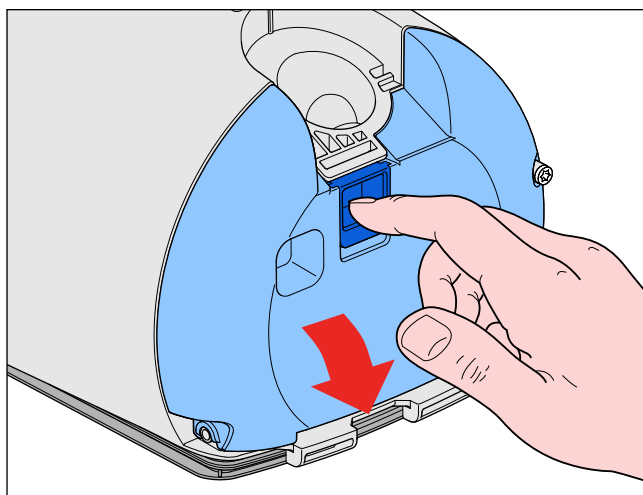
- The foam in the Inlet filter assy can be cleaned. By pulling the plastic ring the foam filter can be removed without touching the dirt on the filter (see picture).



- The bottom of the Bucket can be removed as shown in the picture below.

**Remark:**

The Bucket can be placed back without the bottom, this will not lead to a safety problem, but all the dust will get into the bottom housing.

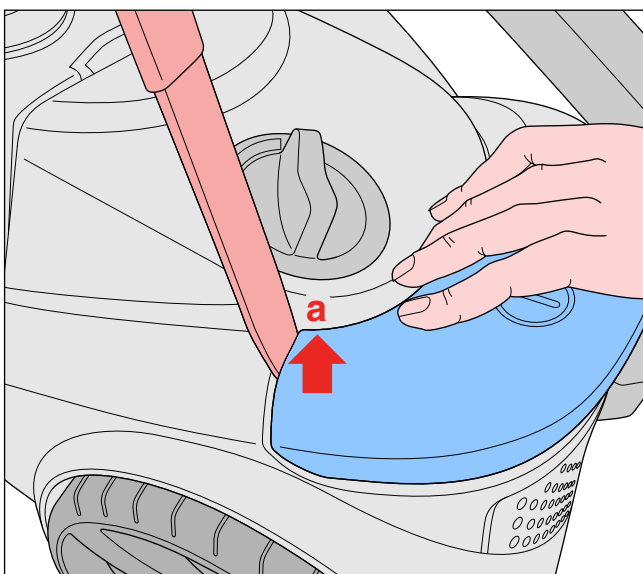
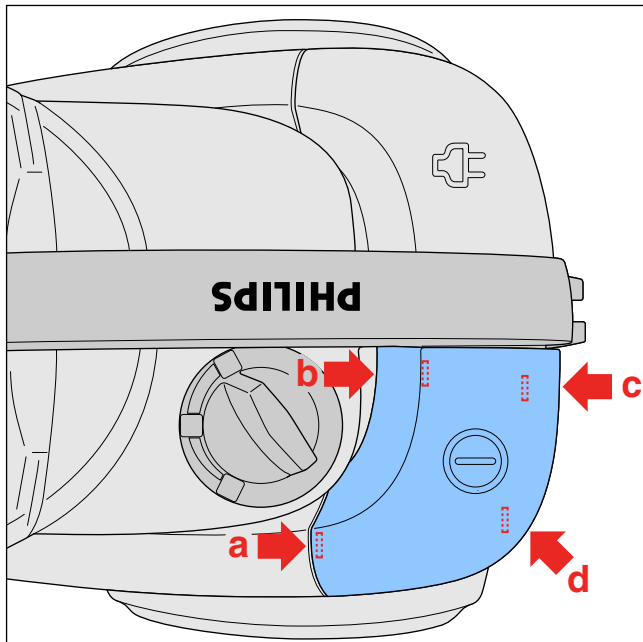


## DISASSEMBLY- AND RE-ASSEMBLY ADVISE

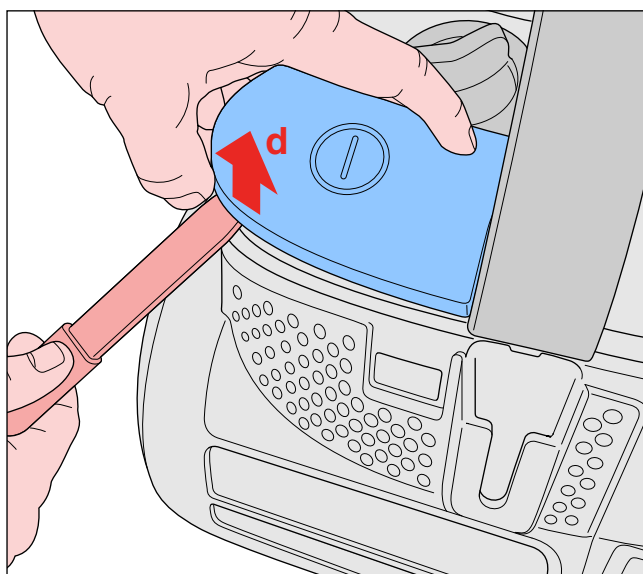
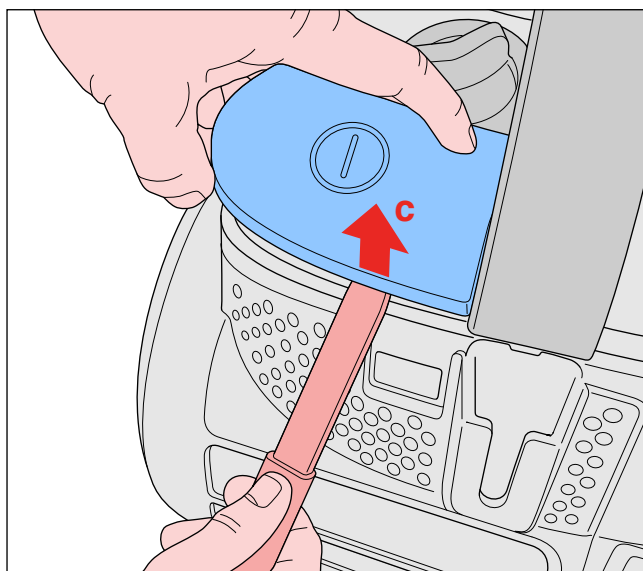
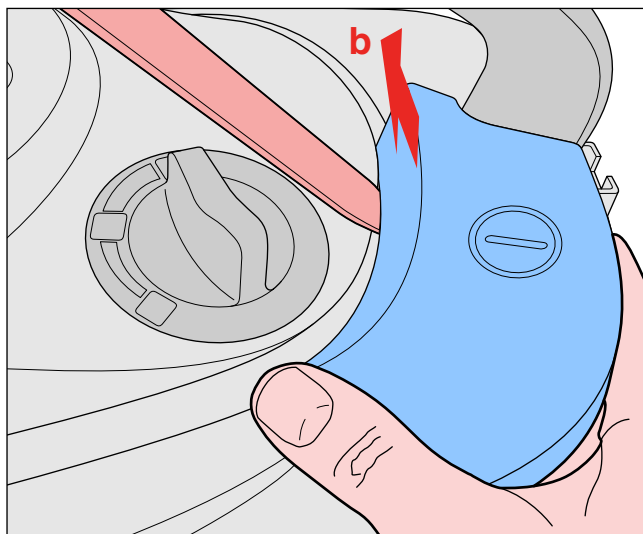
- To reach the inner parts for repair, Upper housing (18) has to be removed. First the On/Off button (17) and Cordwinder button (16) must be removed, this can be done with a screwdriver.

### Remark:

The two buttons are secured with 4 “snap locks”, be careful when removing (see picture).



- When lifting at position **b** push the button a little towards the front side.



- When assembling, the buttons can easily be mounted by clicking, start at the side of the handle.

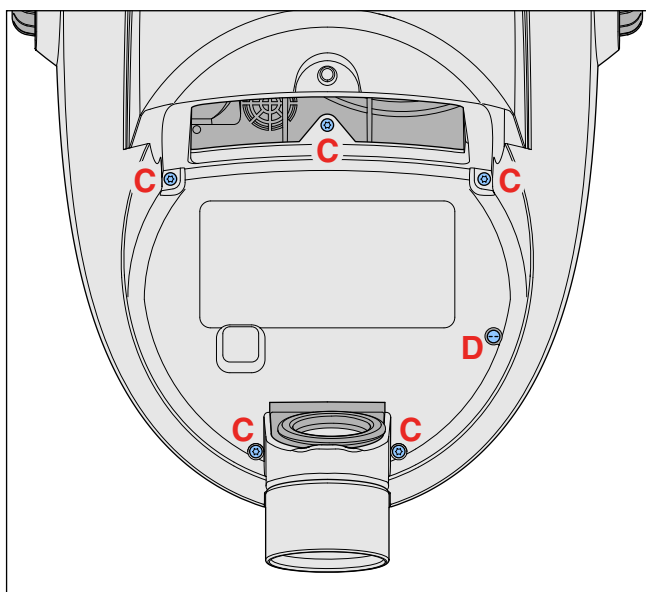
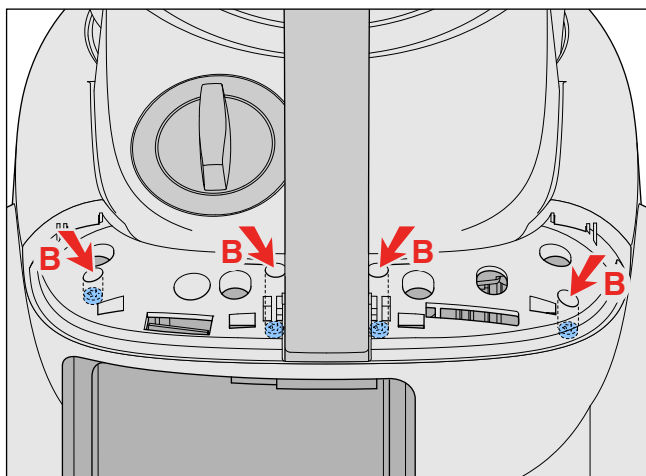
### Remark:

Check that the two springs are in the correct position.

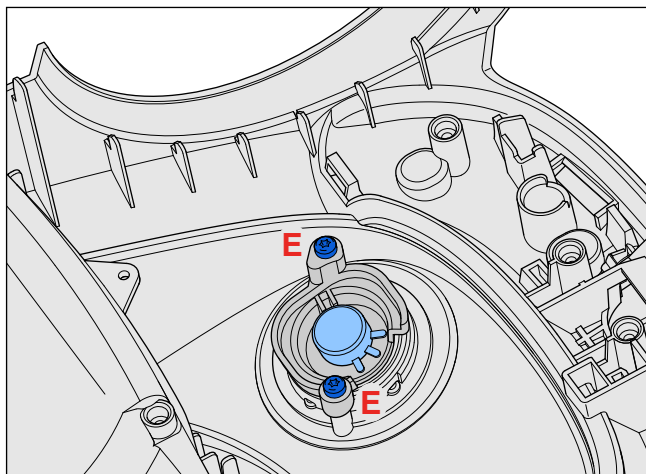
## DISASSEMBLY- AND RE-ASSEMBLY ADVISE

**FC8768/01**

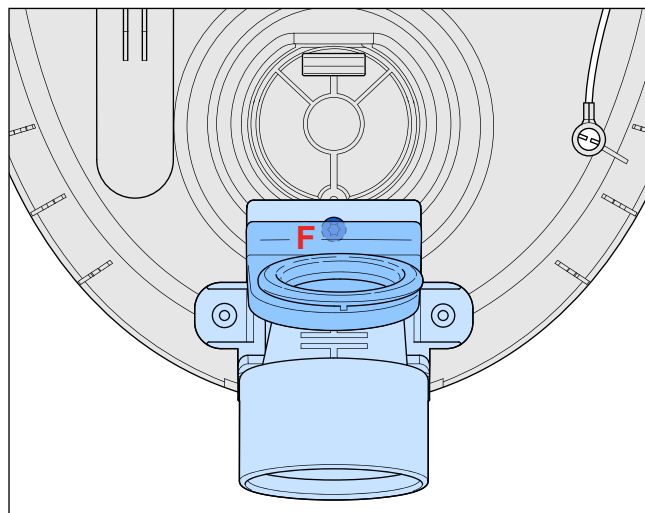
- After removing the two buttons remove the 4 screws **B** at the back and the 5 screws **C** at the front of the Upperhousing (see pictures).
- Screw **D** at the front does not need to be removed, this screw is for ESD and is located in the Lowerhousing.



- To replace the potmeter (9) situated at the bottom of the upperhousing, remove knob (7) on top of the upperhousing and remove the 2 screws **E** at the bottom of the upperhousing (see picture).



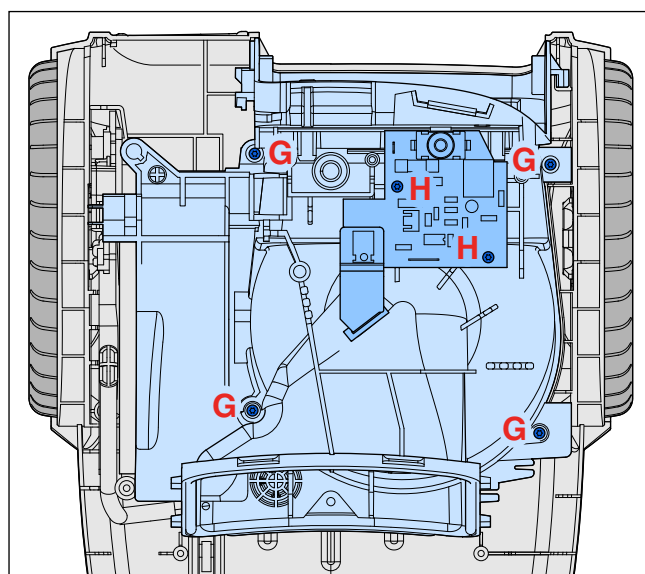
- After removing the Upperhousing, Hose connection (10) and Bucket inlet sealing (13) are accessible. To replace the Hose connection screw **F** has to be removed.



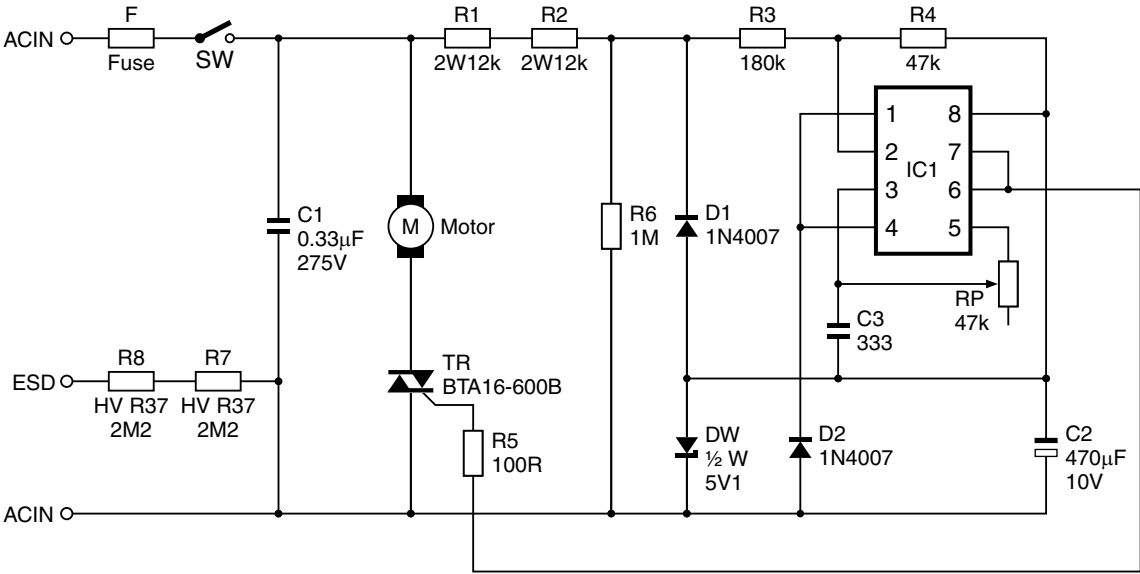
- To replace Cordwinder (24) or Motor (31) Motor housing (28) has to be removed, this can be done by removing the 4 screws **G** (see picture).

**Remark:**

A special long screw driver is needed!

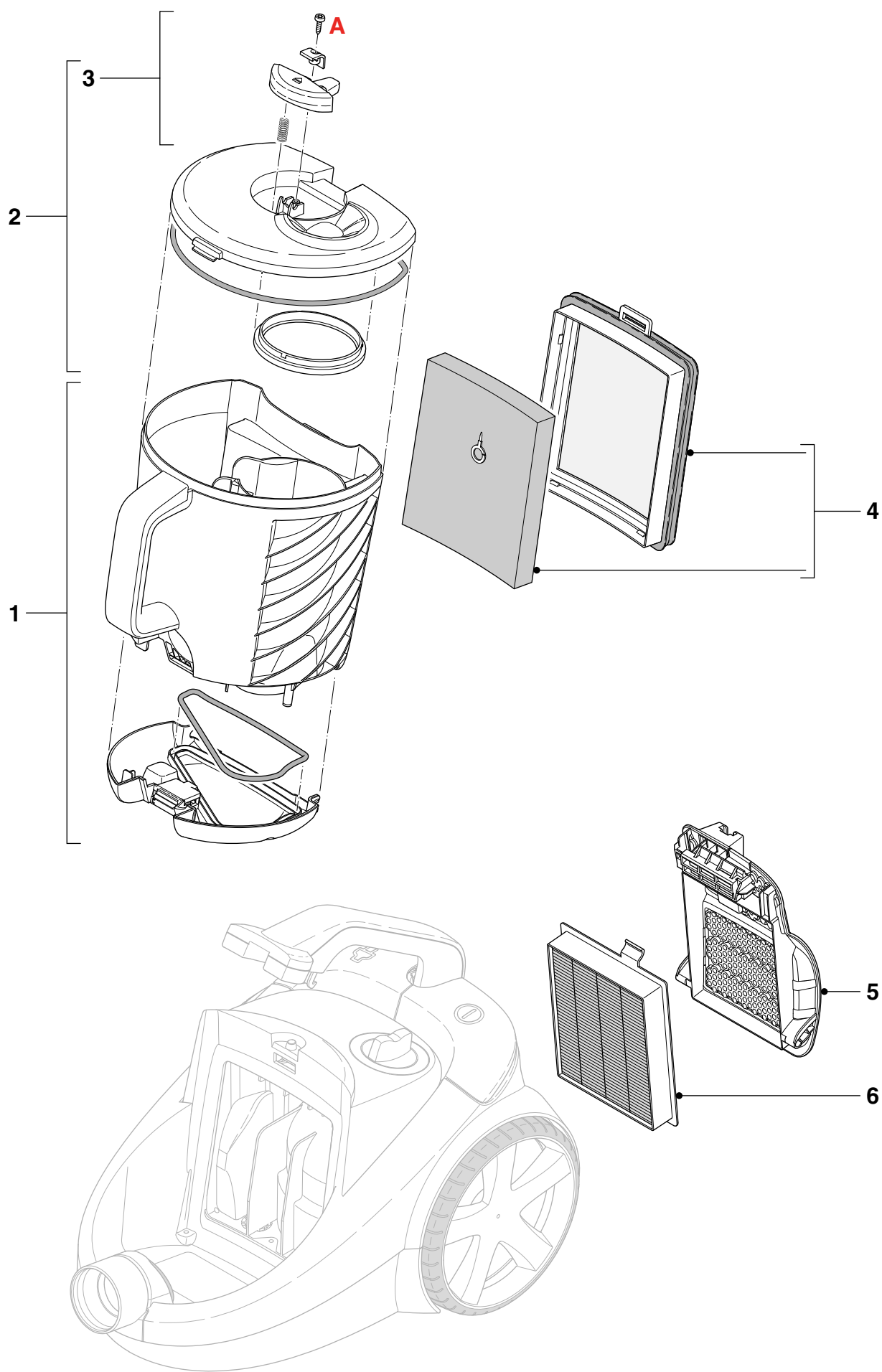


- To replace the PCB (9) remove the 2 short screws **H**.

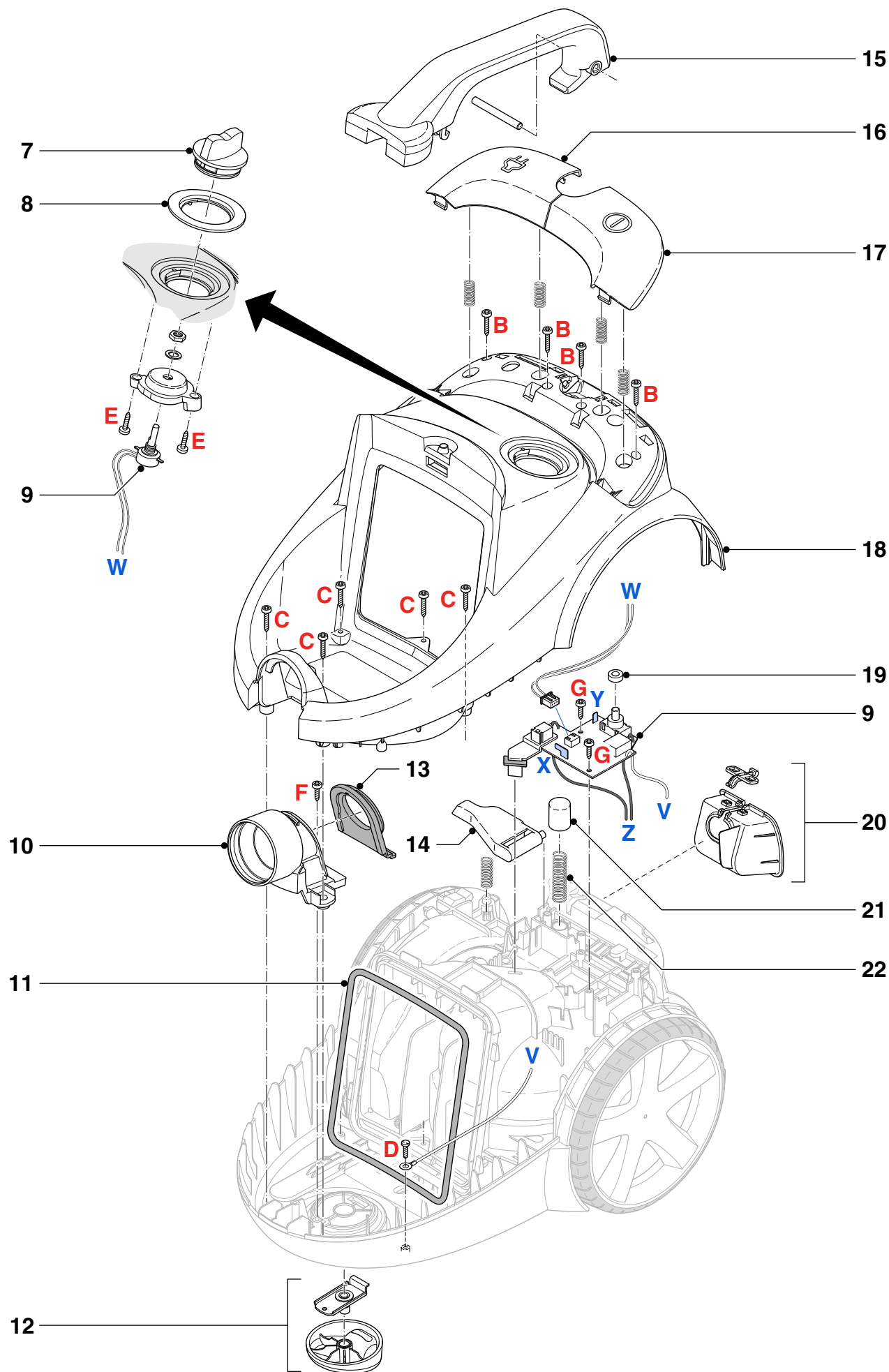


Pos	Service code	Description	Remark
1*	9965 100 51329	Bucket assy	Smoke bl. transp. / Met. silver
2*	9965 100 51299	Lid assy	Smoke bl. transp. / Met. silver
3	9965 100 51311	Unlock button	Deep black
4	4322 005 33153	Inlet filter assy	
5	9965 100 51318	Exhaust grille assy	Deep black
6	4322 004 93792	EPA 10 Filter	
7	9965 100 51319	Turn knob	Deep black
8	9965 100 51312	Decorative ring	
9	4322 006 24702	PCBA Cougar	
10	9965 100 51305	Hose connection	Deep black
11	9965 100 51306	Inlet sealing	
12	9965 100 51324	Caster assy	Deep black
13	9965 100 51308	Bucket inlet sealing	
14	9965 100 51323	Cordwinder lever	
15	9965 100 51322	Top handle assy	Deep black / Met. silver
16	9965 100 51297	CW button	Deep black
17	9965 100 51301	On/Off button	Deep black
18	9965 100 51368	Upper housing	Valentine red Metallic 20849
19	9965 100 51327	Protection ring (on switch)	
20	9965 100 51321	Cord outlet assy	Deep black
21	9965 100 51325	Handle pushing tube	
22	9965 100 51326	Handle pushing tube spring	
23	9965 100 51302	Valve assy	
24	4322 005 33174	Cordwinder Cougar	7 m / 4.8 / 1.0
25	9965 100 51303	Lower housing	Deep black
26	9965 100 51313	Motor housing cover	
27	9965 100 51316	Exhaust sealing	
28	9965 100 61664	Motor housing	
29	9965 100 51304	Silencer motor housing	
30	9965 100 51317	Motor sealing ring	
31	4322 006 99041	Domus 230 V / 50 Hz 1800 W IEC	CCAW Wire
32	9965 100 51296	Motor silencer	
33	9965 100 51315	Silencer lower housing	
34	9965 100 51314	Motor housing sealing	
35	9965 100 51328	Motor buffer back	
36	4322 003 46561	Rear wheel assy High end	Met. silver / Ink black
37	4322 004 24561	Hose assy Cougar	
38	4322 004 24071	Telescopic Tube Actuator bush	Dark raven
39	4322 004 24061	Taichi nozzle	Dark raven
40	4322 003 42561	Accessory clip	Dark raven
41	4322 004 24221	Crevice nozzle	Dark raven
42	4322 004 24161	Small nozzle	Dark raven
43	4322 004 24181	Plumeau assy	Dark raven
44	4322 004 24591	Super parquet nozzle Standard	Dark raven

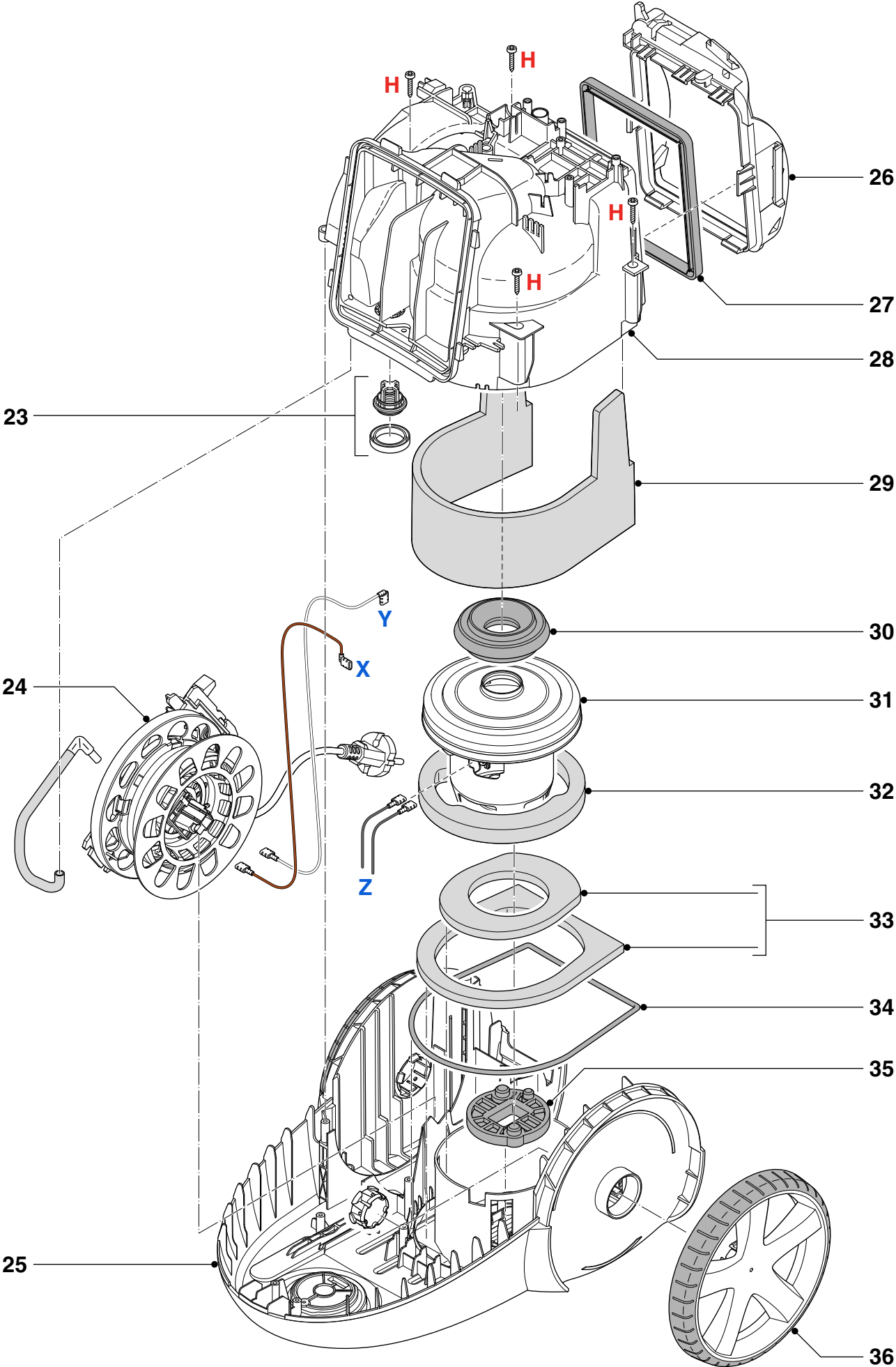
\* Standardized colour

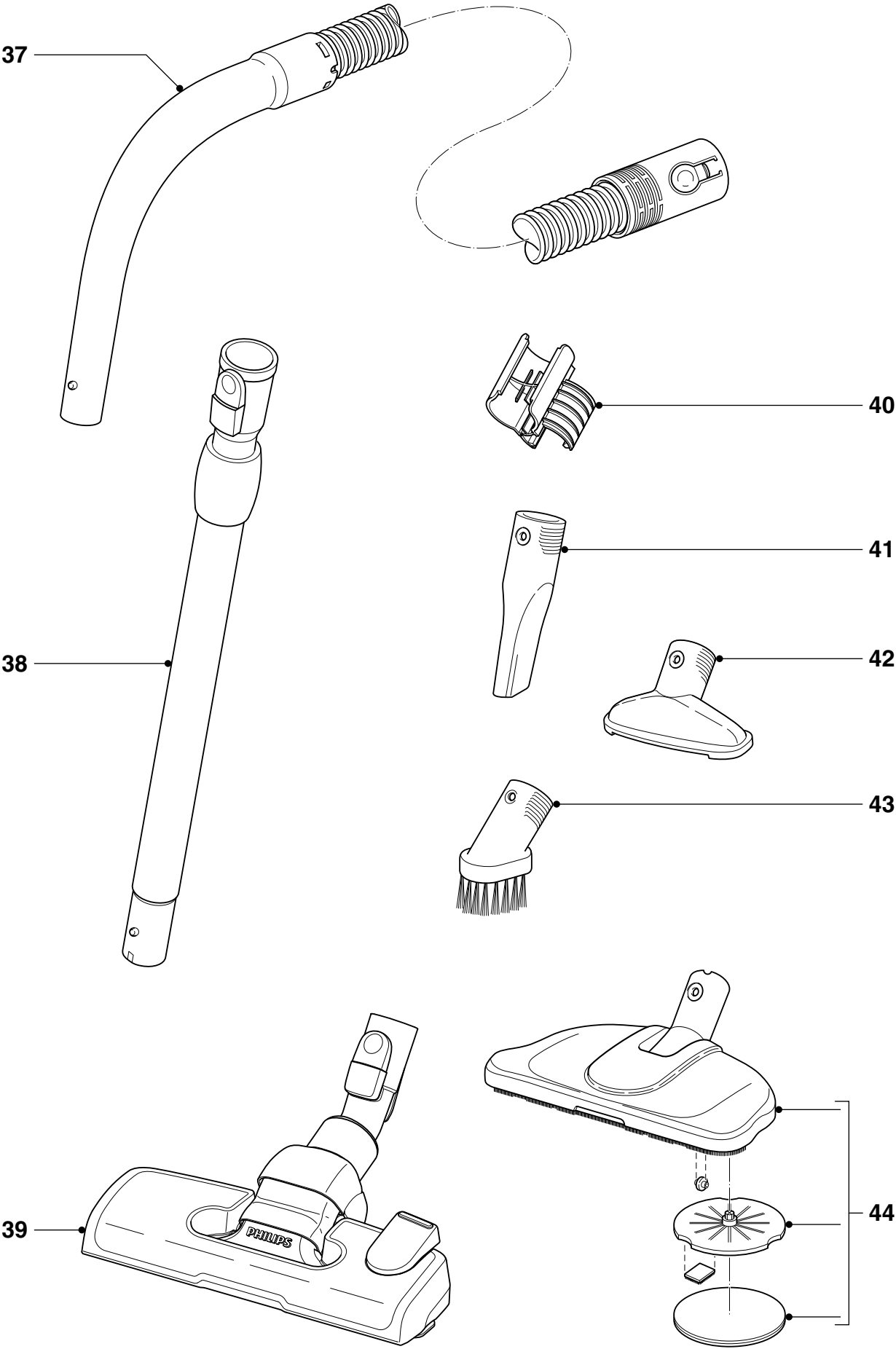












## Version history

13/12 Version 1.1 : FC8768/01 initial release.

14/07 Version 1.2 : On page 1 at Technical Information, changed Hepa 12 Super Clean Air into EPA 10 washable filter.  
In Parts List at Pos. 6, changed 4322 004 93711 HEPA 12 Filter Cougar into  
4322 004 93792 EPA 10 Filter.

14/10 Version 1.3 : On page 1 at Optional, added FC8038 : HEPA13 washable Exhaust filter.

16/02 Version 1.4 : In Parts List at Pos. 24, changed 4322 005 33171 Cordwinder Cougar 8 m / 4.8 plug into  
4322 005 33174 Cordwinder Cougar 7 m / 4.8 / 1.0.

16/04 Version 1.5 : In Parts List at Pos. 4, changed 4322 005 33151 Inlet filter assy into 4322 005 33153.