



Philips Consumer Lifestyle

Service Manual

PRODUCT INFORMATION

- This product meets the requirements regarding interference suppression on radio and TV.
- After the product has been repaired, it should function properly and has to meet the safety requirements as officially laid down at this moment.

TECHNICAL INFORMATION

- Colour : Pearl Beige/Signal Yellow
- Power consumption : 1800 W (IEC) 230 V
- Maximum Air displacement : 40 l/s
- Vacuum : 30 kPa
- Duststorage capacity : 3 L
- Cord length : 8 m
- Fiter system : Classic S-Baglong performance
: 3 layer permanent motor protection filter
: Ultra clean air washable HEPA13 exhaust filter
- Net weight : 7.5 kg

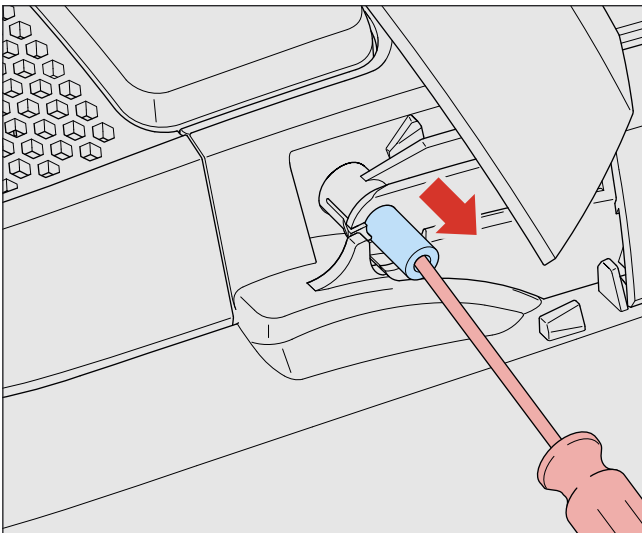
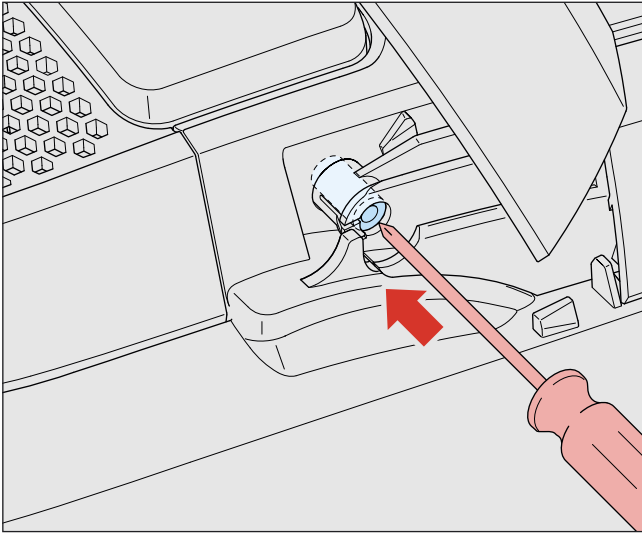
ACCESSORIES

- Nozzle : Tri-Active all purpose nozzle
- Tubes : Metal lacquered telescopic tube
- Accessories : Crevice nozzle and small nozzle
- Accessory storage : Accessory clip on tube
- Coupling : Button coupling

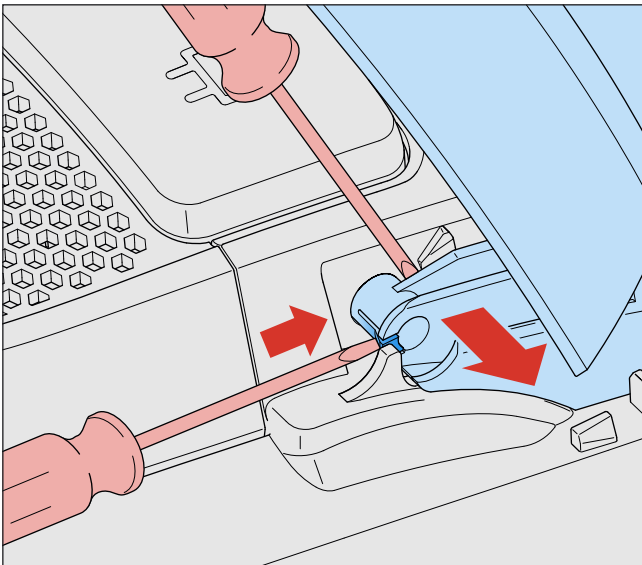
OPTIONAL (accessories)

- FC8021 : S-bag Classic
- FC8022 : S-bag Clinic
- FC8023 : S-bag Anti-Odour
- FC8038 : Ultra clean air washable HEPA13 exhaust filter

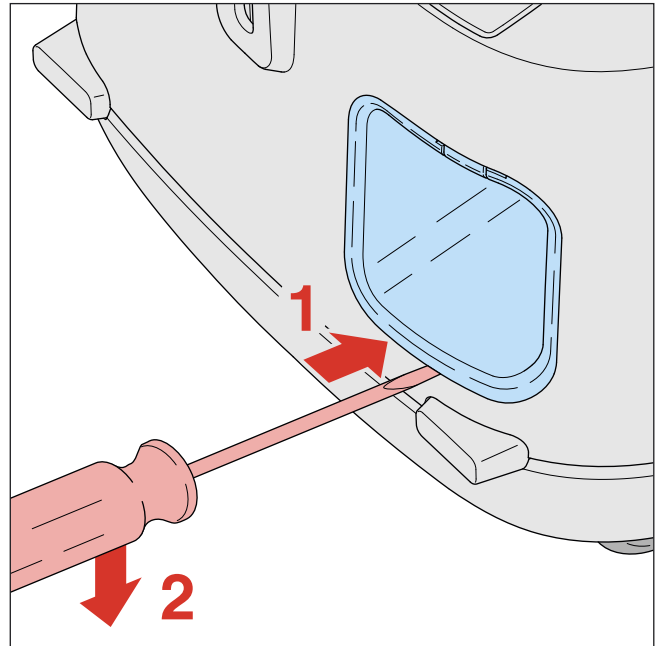
- To open the appliance, first remove the exhaust filter cover and filter.
- Remove the hinge lock-pin (see pictures).



- Remove the dustcover by simultaneously pushing the click hook in the hinge and bending the hinge outside with a screwdriver (see picture).




- To be able to remove the upper housing the cord outlet must be removed using a screwdriver in the lower section (see picture).



- After removing the 6 screws (A) the upper housing can be removed.
- When the repair is finished, check whether all functions of the appliance work properly.
- To disassemble the cord winder, use TORX screwdriver no. T10, which is one of a set consisting of T20; T15; T10; T9; T8; T7 and T6 (code number 4822 395 50145).

REPAIR INSTRUCTION

- The spare parts have been standardized as much as possible.
- Depending on the original cord, the spare cord must be shortened to the length of the original cord.
- The cord winder spring must be tensioned to the maximum level and then be rewound approx. 1.5 turn.
- Item 16, safety valve, opens to cool the motor if the air displacement is too low or if the airflow is blocked.
- To prevent the switch getting damaged by too much force, a protective ring (pos. 50) was added in the later versions. If this part is missing it must still be placed as modification!

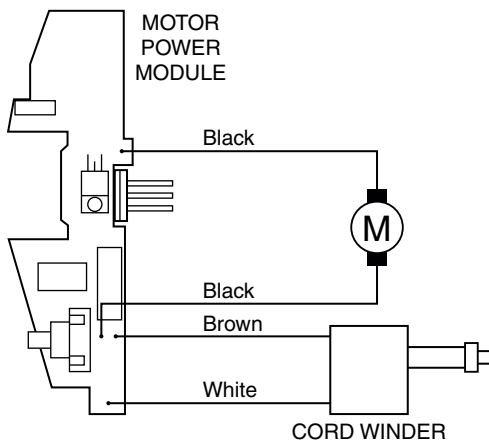
 = changed

Pos	Service code	Description
1	4222 459 45586	Hinge pin
2	4222 459 45582	Dustcover assy FC9081 Beige
3	4222 459 45583	Dustbag detector incl. spring
4	4222 459 45578	Dustbagholder Vapour dusk
5	4222 459 45585	Handle assy White
6	4222 459 45579	Exhaust grille Beige
7	4322 004 93350	HEPA filter
8	4222 459 45584	Cord outlet kit Yellow
9	4222 459 45581	HEPA lock grille Beige
10	4322 001 74110	Exhaust seal
11	4222 459 45605	Support right Beige
12	4222 459 45604	Support left Beige
13	4222 459 45592	Control wheel ring Chrome
14	4822 480 10228	Inlet filter
15	4322 003 33280	Inlet grille
16	4322 005 16990	DBFI/valve assy
17	4222 459 45595	Brake lever
18	4222 459 45588	CW button Yellow
19	4222 459 45587	On/Off button Yellow
20	4222 459 45591	Control wheel Yellow
21	4222 459 45589	Switch lever
22	4322 006 23880	PCB assy Pilatus HV
23	4222 459 45590	Pedal spring
24	4222 459 45593	Backpanel/Dustchamber
25	4222 459 45594	Silencer 3

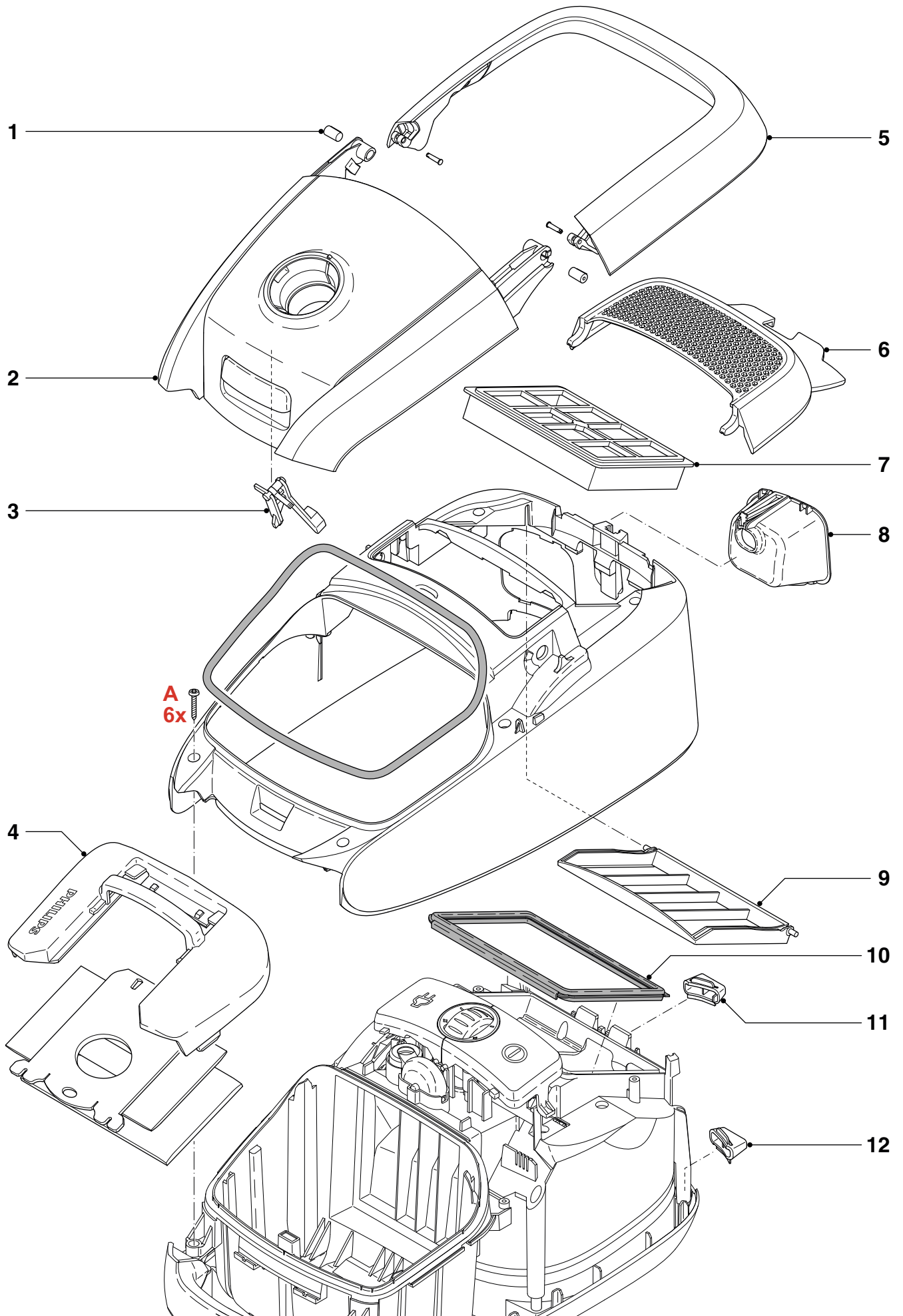
Pos	Service code	Description
26	4222 459 45606	Motor housing top
27	4322 001 73440	Bufferring front
28	4322 009 09430	Motor Domel 1761 220-240 V
29	4222 459 45607	Silencer 4
30	4222 459 45608	Motor bracket
31	4322 001 73450	Buffer back
32	4222 459 45609	Motor housing bottom
33	4222 459 45598	Front handle inside White
34	4222 459 45599	Front handle outside White
35	4322 009 00080	Cordwinder no cord!
36	4322 005 26610	Contact plate
37	4222 459 45596	Rubber knee bend dustchamber
38	4222 459 45603	Casterwheel kit Beige
39*	4322 006 07390	Cordset Euro 4.8 mm 9 m
40	4222 459 45602	S-Class sealing
41	4222 459 45601	Silencer 2
42	4222 459 45600	Silencer 1
43	4222 459 45597	Lower housing Beige
44	4222 459 45610	Bend/hose/connection assy Beige
45	4322 004 21750	2p Telescopic tube Beige
46	4322 004 22070	Crevice nozzle Beige
47	4322 003 36690	Accessory clip Beige
48	4322 004 22080	Small nozzle Beige
49	4322 004 20330	Tri-active nozzle Beige
50	4222 459 48641	Protective switch ring

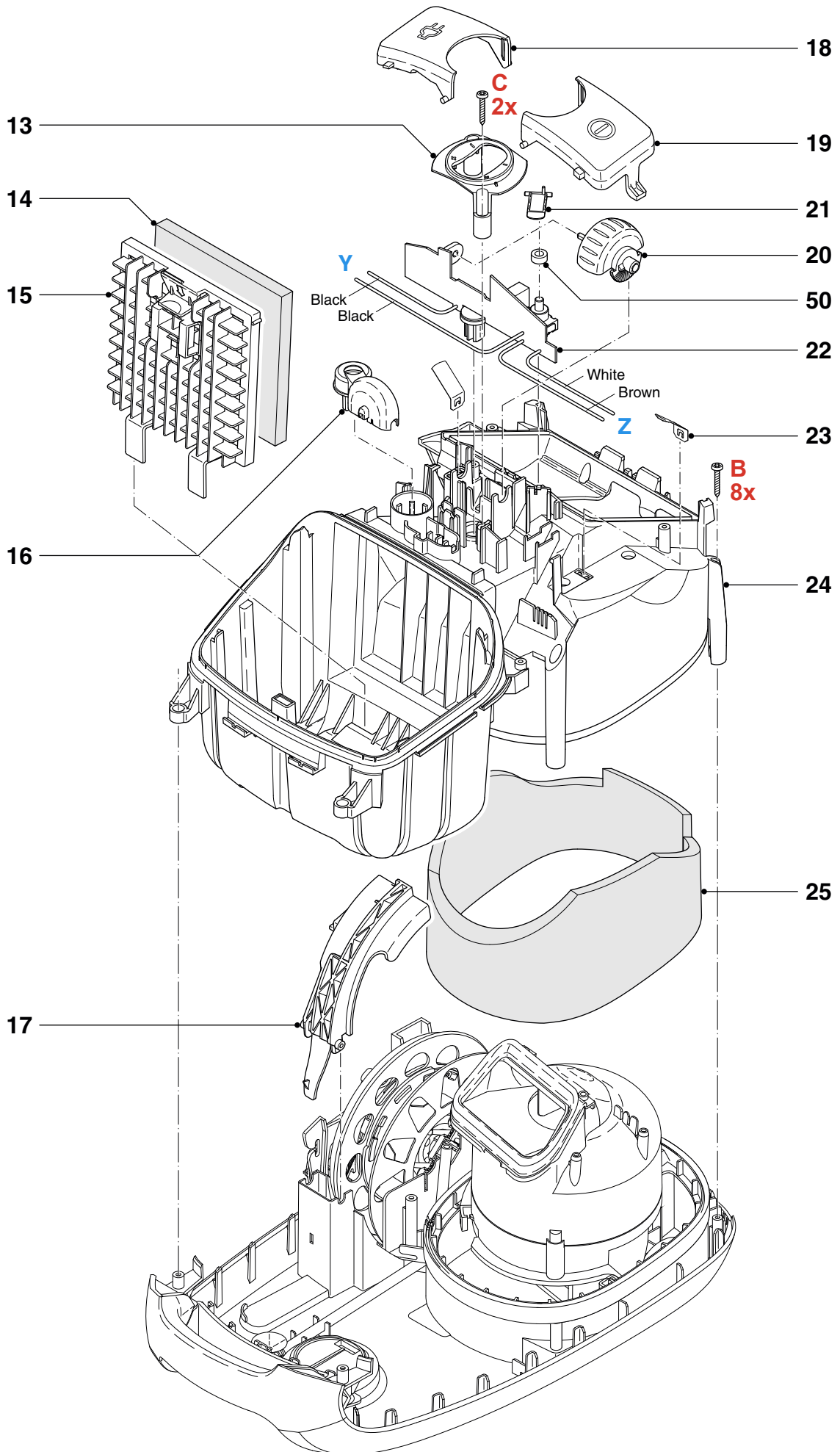
* Standardized colour

ELECTRICAL DIAGRAM



■ = changed





EXPLODED VIEW

FC908 I

