



Philips Consumer Lifestyle

# Service Manual

## PRODUCT INFORMATION

- This product meets the requirements regarding interference suppression on radio and TV.
- After the product has been repaired, it should function properly and has to meet the safety requirements as officially laid down at this moment.

## TECHNICAL INFORMATION

- Colour : Dark Raven/  
Bright Aubergine
- Power consumption : 1800 W (IEC) 230 V
- Maximum Air displacement : 40 l/s
- Vacuum : 30 kPa
- Duststorage capacity : 3 L
- Cord length : 8 m
- Filter system : Classic S-Baglong  
performance  
: 3 layer permanent motor  
protection filter  
: Ultra clean air washable  
HEPA13 exhaust filter
- Net weight : 7.5 kg

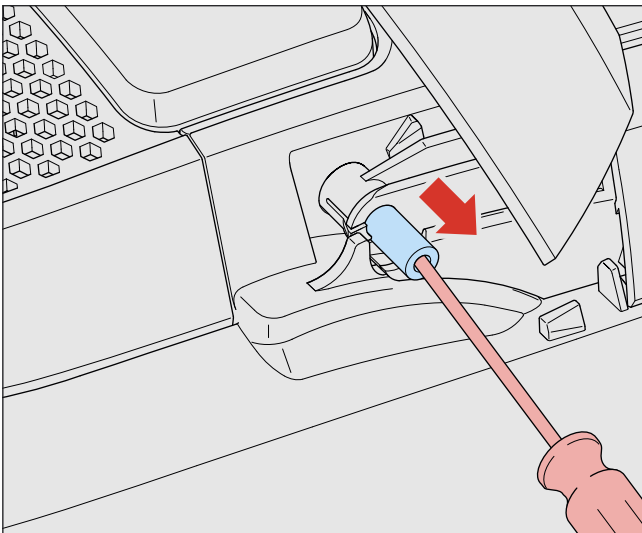
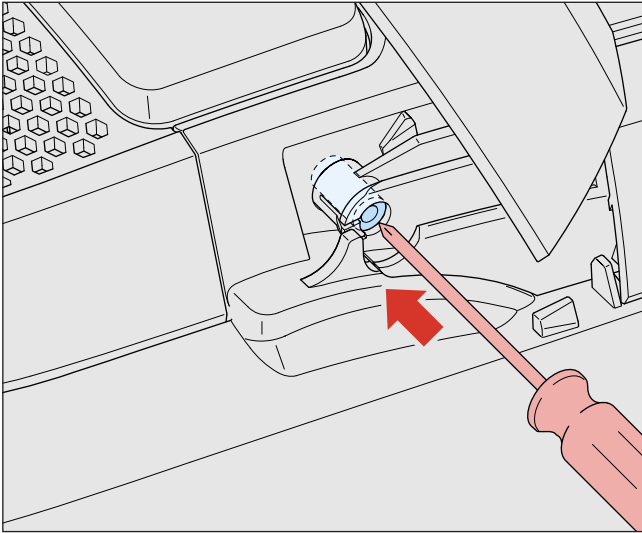
## ACCESSORIES

- Nozzle : RD264 all purpose nozzle
- Additional Nozzle : Hard Floor Nozzle
- Tubes : Metal lacquered telescopic tube
- Handgrip : Ergonomic handgrip
- Accessories : Brush, crevice nozzle and  
small nozzle
- Accessory storage : Active accessory holder in tube
- Coupling : Button coupling

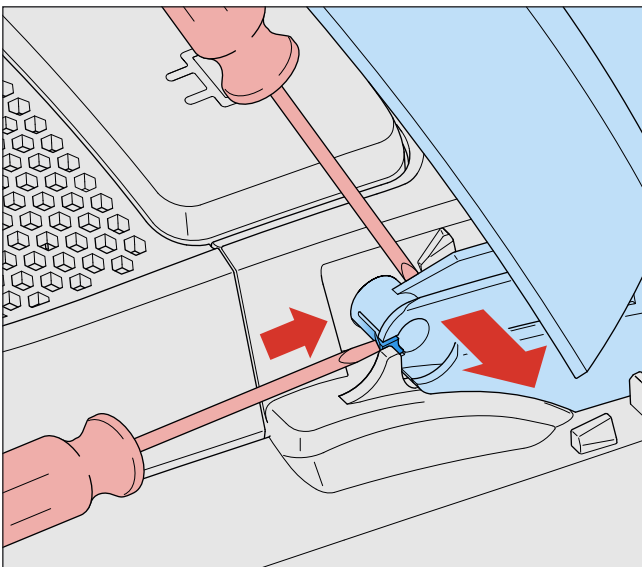
## OPTIONAL (accessories)

- FC8021 : S-bag Classic
- FC8022 : S-bag Clinic
- FC8023 : S-bag Anti-Odour
- FC8038 : Ultra clean air washable HEPA13 exhaust filter

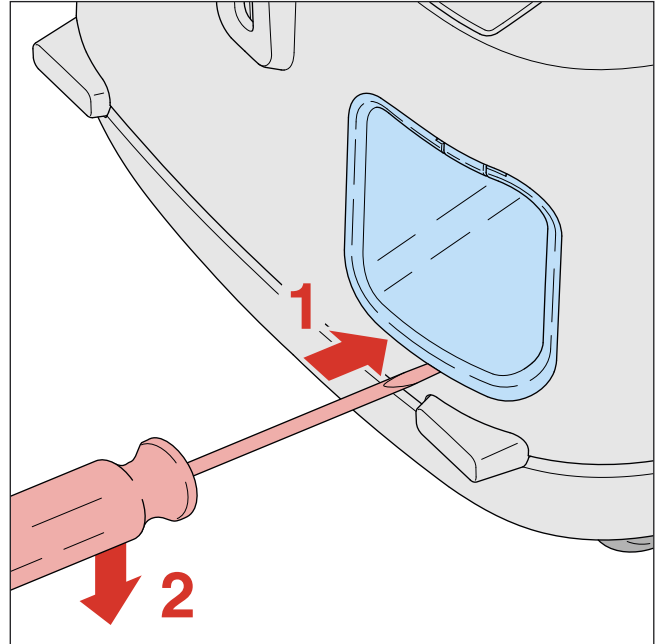
- To open the appliance, first remove the exhaust filter cover and filter.
- Remove the hinge lock-pin (see pictures).



- Remove the dustcover by simultaneously pushing the click hook in the hinge and bending the hinge outside with a screwdriver (see picture).




- To be able to remove the upper housing the cord outlet must be removed using a screwdriver in the lower section (see picture).



- After removing the 6 screws (A) the upper housing can be removed.
- When the repair is finished, check whether all functions of the appliance work properly.
- To disassemble the cord winder, use TORX screwdriver no. T10, which is one of a set consisting of T20; T15; T10; T9; T8; T7 and T6 (code number 4822 395 50145).

### REPAIR INSTRUCTION

- The spare parts have been standardized as much as possible.
- Depending on the original cord, the spare cord must be shortened to the length of the original cord.
- The cord winder spring must be tensioned to the maximum level and then be rewound approx. 1.5 turn.
- Item 16, safety valve, opens to cool the motor if the air displacement is too low or if the airflow is blocked.
- To prevent the switch getting damaged by too much force, a protective ring (pos. 53) was added in the later versions. If this part is missing it must still be placed as modification!

 = changed

| Pos | Service code   | Description                      |
|-----|----------------|----------------------------------|
| 1   | 4222 459 45586 | Hinge pin                        |
| 2   | 4222 459 45627 | Dustc. assy FC9084 Dark raven    |
| 3   | 4222 459 45583 | Dustbag detector incl. spring    |
| 4   | 4222 459 45611 | Dustbagholder Dark raven         |
| 5   | 4222 459 45616 | Handle assy Steel grey           |
| 6   | 4222 459 45612 | Exhaust grille Dark raven        |
| 7   | 4322 004 93350 | HEPA filter                      |
| 8   | 4222 459 45628 | Cord outlet kit Bright aubergine |
| 9   | 4222 459 45613 | HEPA lock grille Dark raven      |
| 10  | 4322 001 74110 | Exhaust seal                     |
| 11  | 4222 459 45625 | Support right Dark raven         |
| 12  | 4222 459 45624 | Support left Dark raven          |
| 13  | 4222 459 45592 | Control wheel ring Chrome        |
| 14  | 4822 480 10228 | Inlet filter                     |
| 15  | 4322 003 33280 | Inlet grille                     |
| 16  | 4322 005 16990 | DBFI/valve assy                  |
| 17  | 4222 459 45595 | Brake lever                      |
| 18  | 4222 459 45630 | CW button Lavender dust          |
| 19  | 4222 459 45629 | On/Off button Lavender dust      |
| 20  | 4222 459 45631 | Control wheel Bright aubergine   |
| 21  | 4222 459 45589 | Switch lever                     |
| 22  | 4322 006 23880 | PCB assy Pilatus HV              |
| 23  | 4222 459 45590 | Pedal spring                     |
| 24  | 4222 459 45593 | Backpanel/Dustchamber            |
| 25  | 4222 459 45594 | Silencer 3                       |
| 26  | 4222 459 45606 | Motor housing top                |
| 27  | 4322 001 73440 | Buffering front                  |

| Pos | Service code   | Description                                 |
|-----|----------------|---|
| 28  | 4322 009 09430 | Motor Domel 1761 220-240 V                  |
| 29  | 4222 459 45607 | Silencer 4                                  |
| 30  | 4222 459 45608 | Motor bracket                               |
| 31  | 4322 001 73450 | Buffer back                                 |
| 32  | 4222 459 45609 | Motor housing bottom                        |
| 33  | 4222 459 45621 | Front handle inside Steel grey              |
| 34  | 4222 459 45622 | Front handle outside Steel grey             |
| 35  | 4322 009 00080 | Cordwinder no cord!                         |
| 36  | 4322 005 26610 | Contact plate                               |
| 37  | 4222 459 45596 | Rubber knee bend dustchamber                |
| 38  | 4222 459 45623 | Casterwheel kit Dark raven                  |
| 39* | 4322 006 07390 | Cordset Euro 4.8 mm 9 m                     |
| 40  | 4322 006 07400 | Cordset Swiss 9 m                           |
| 41  | 4222 459 45602 | S-Class sealing                             |
| 42  | 4222 459 45601 | Silencer 2                                  |
| 43  | 4222 459 45600 | Silencer 1                                  |
| 44  | 4222 459 45620 | Lower housing Steel grey                    |
| 45  | 4222 459 45626 | Bend type 5/hose/connection assy Dark raven |
| 46  | 4322 005 27890 | Accessory holder Dark raven                 |
| 47  | 4322 005 27840 | 2p telescopic tube act. bush Dark raven     |
| 48  | 4322 003 35580 | Crevice nozzle Dark raven                   |
| 49  | 4322 005 27880 | Small nozzle Dark raven                     |
| 50  | 4322 004 20480 | Brush nozzle Dark raven                     |
| 51  | 4322 004 23820 | RD264 Nozzle stand                          |
| 52  | 4322 004 23770 | HF Nozzle stand                             |
| 53  | 4222 459 48641 | Protective switch ring                      |

\* Standardized colour

## ELECTRICAL DIAGRAM

