



Philips Domestic Appliances and Personal Care

Service Manual

PRODUCT INFORMATION

- This product meets the requirements regarding interference suppression on radio and TV.
- After the product has been repaired, it should function properly and has to meet the safety requirements as officially laid down at this moment.

TECHNICAL INFORMATION

- Colour : Greige
- Power consumption : 1250 W
(IEC) 230V
- Maximum Air displacement : 41 l/s
- Vacuum : 290 mbar / 29.0 kPa
- Type number dustbag : FC8021
- Duststorage capacity : 4 L
- Cord length : 9 m
- Filter system : Classic S-Bag
long performance
: 3 layer permanent motor
protection filter
: Ultra clean air washable
HEPA13 exhaust filter
- Dimensions of cleaner : 472 x 324 x 276 mm
- Dimensions of packaging : 593 x 393 x 296 mm
- Net weight : 6.3 kg

ACCESSORIES

- Nozzle : Tri-Active all purpose nozzle
- Special Nozzle : Super Parquet Nozzle
- Tubes : Metal lacquered 3-piece telescopic tube
- Accessories : Brush, crevice nozzle and small nozzle
- Accessory storage : Active accessory storage bridge in handgrip
- Coupling : Button coupling

OPTIONAL (accessories)

- FC8021 : S-bag Classic
- FC8022 : S-bag Clinic
- FC8023 : S-bag Anti-Odour
- FC8031 : Super Clean Air HEPA filter,
HEPA12 exhaust filter
- FC8038 : Ultra clean air washable HEPA13
exhaust filter

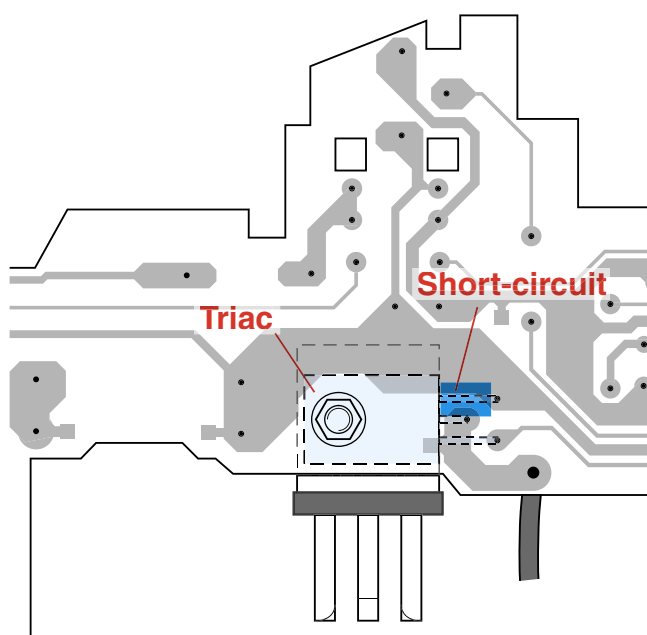
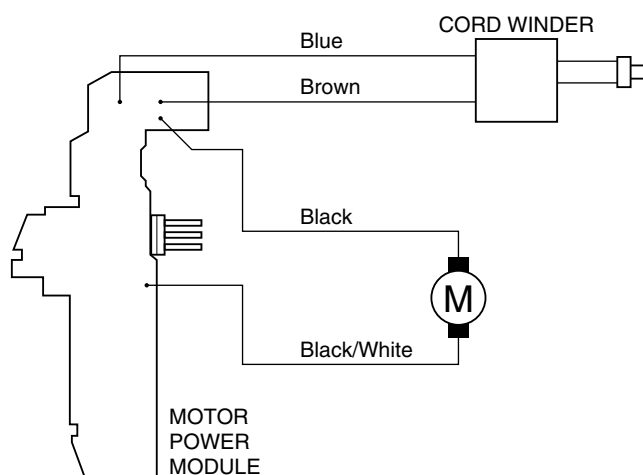
DISASSEMBLY- AND RE-ASSEMBLY ADVISE

- Open the appliance, first remove the filter cover (item 22) and then remove the 2 screws (A) of the button assy (item 10).
- The button assy can be removed by lifting up the back of the assy and then pull the assy out of the appliance.
- When the dustcover and the handle have been removed, the electronics, DBFI valve assy, CW-lever and the switch lever can be removed.
- The dustchamber and the backpanel can be removed from the appliance by removing 15 screws (B and C).
- You will require a screwdriver with a 14.5 cm long shank for this. Screwdriver 4322 009 08490 for T15 can be used.
- When the cordwinder has been taken out, the final screw (D) for releasing the lower front from the appliance can be removed.
- When the repair is finished, check whether all functions of the appliance work properly.
- To disassemble the cordwinder, use TORX screwdriver no. T10, which is one of a set consisting of T20; T15; T10; T9; T8; T7 and T6 (code number 4822 395 505145).

REPAIR INSTRUCTION

- Cotton dustbags, are used in countries in which paper dustbags are not available.
- The cord winder spring must be tensioned to the maximum level and then be rewound approx. 1.5 turn.
- **Item 14**, air valve, opens to cool the motor if the air displacement is too low or if the airflow is blocked.
- If the function of the electronic control unit is not required, the Triac must be short-circuited in the manner shown in the circuit diagram.
- When the vacuum cleaner is used to suck up fine dust the pores of the dustbag may become clogged, causing the passage of air through the dustbag to become obstructed. As a result, the dustbag-full indicator will indicate that the dustbag needs to be replaced, even though the dustbag is not full at all.

ELECTRICAL DIAGRAM



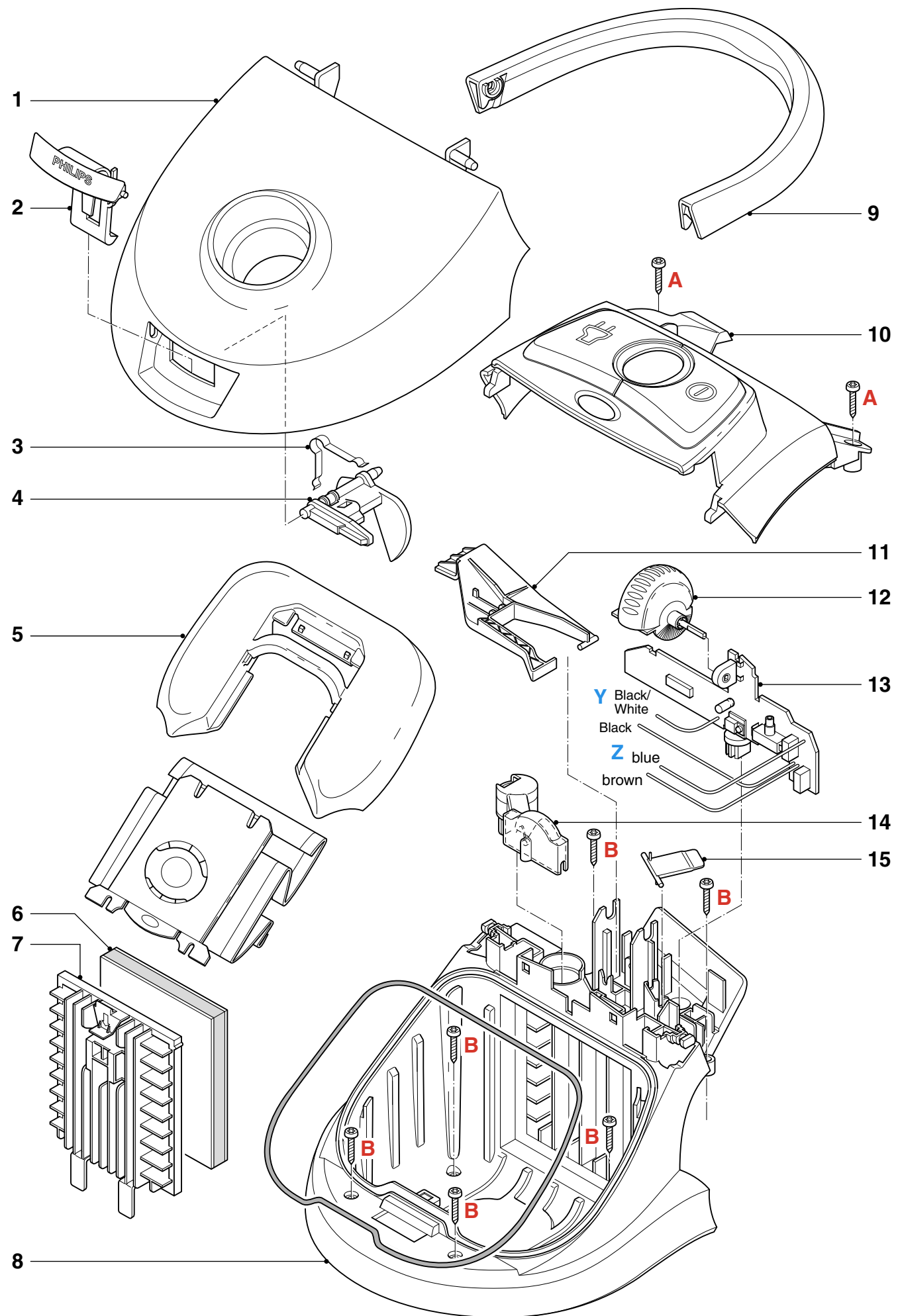
PARTS LIST

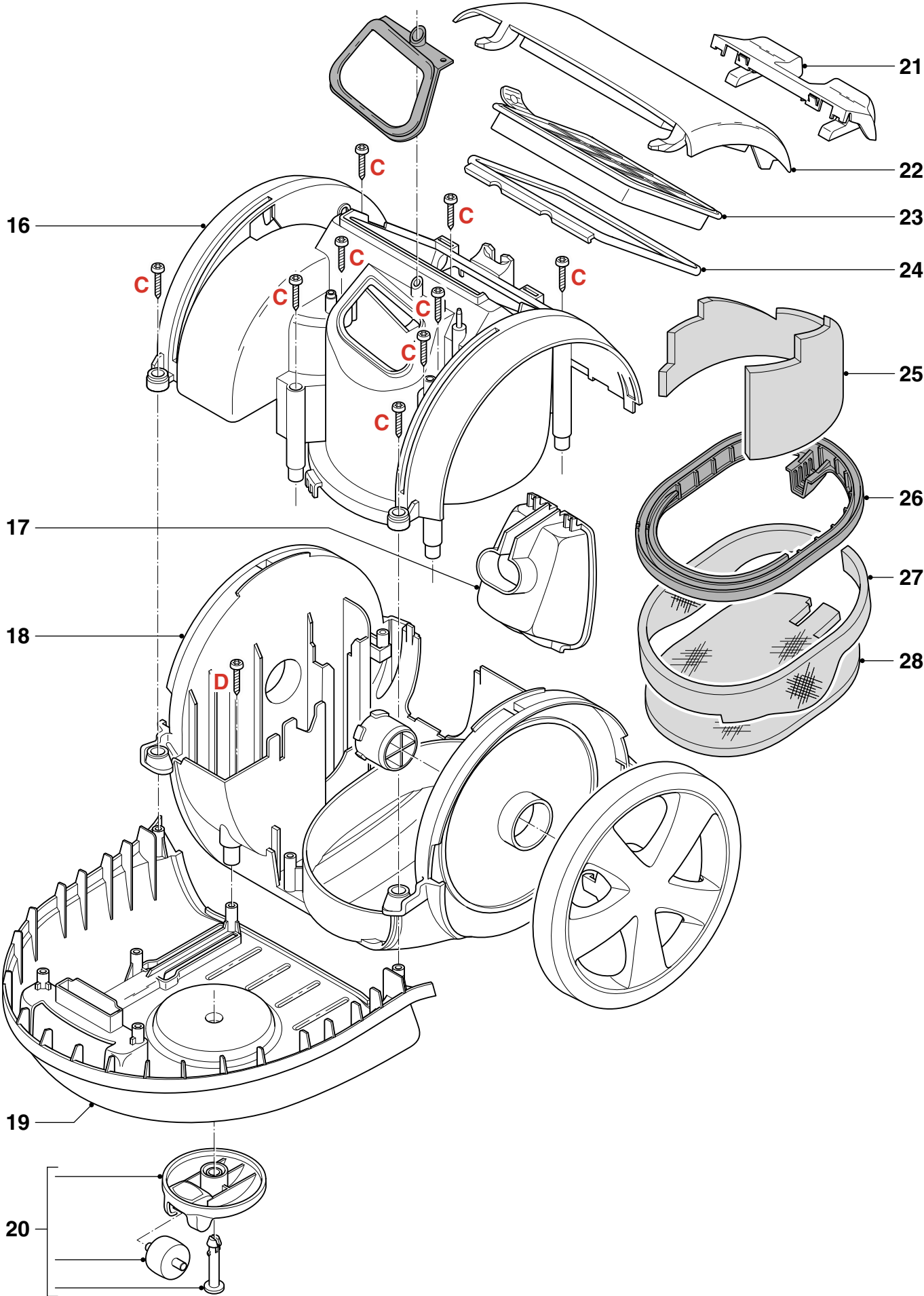
FC9178/01

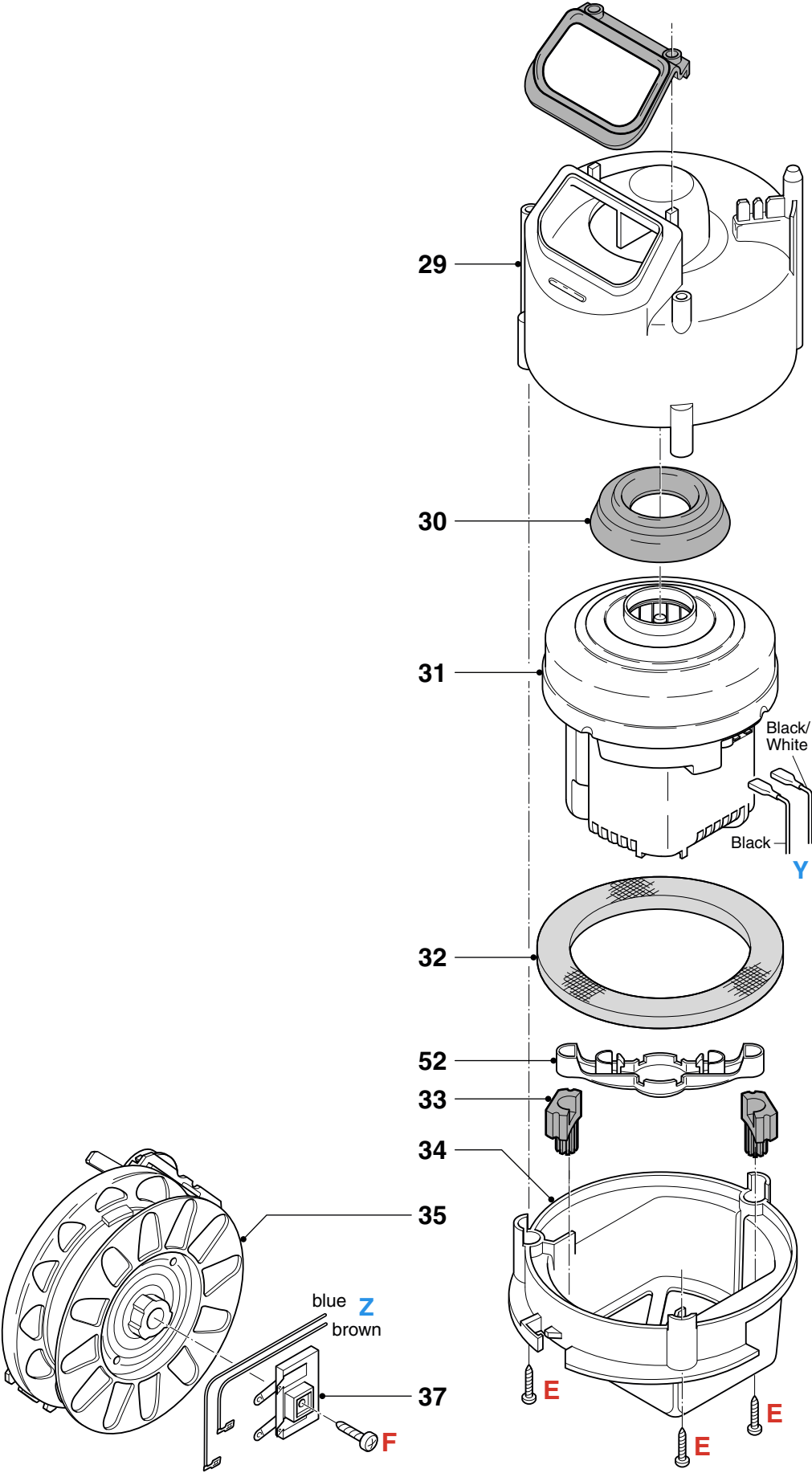
Pos	Service code	Description
1	4322 005 28350	Dustcover / Pr / Greige
2	4322 005 17600	Dustcover lock assy
3	4322 000 67810	DB detector spring
4	4322 003 24790	DB detector / LB / Cool grey
5	4322 003 36150	DB holder / Greige
6	4322 000 37300	Triple inletfilter
7	4322 003 33280	Inlet grille / Blue
8	4322 003 36080	Dust chamber / Black
9	4322 009 09980	Handle performer / Greige
10	4322 009 09990	Button panel assy / Pr / Greige
11	4322 003 24810	Cord winder lever
12	4322 003 36240	Control wheel / Black
13	4322 006 22750	PCB assy 220-240 V 50/60 Hz
14	4322 005 28900	DBFI/Valve assy / Sp.v.
15	4341 003 02390	Switch lever
16	4322 003 36100	Back panel / Black
17	4322 003 36190	Cord outlet / Black
18	4322 003 36090	Lower housing / Black
19	4322 003 36120	Lower front / Black
20	4322 005 28270	Caster assy / Black
21	4322 003 36180	Filter cover lock / Greige
22	4322 003 36130	Filter cover / Greige
23	4322 004 93340	HEPA13 washable exhaust filter
24	4322 001 74110	Exhaust sealing / Blue
25	4322 000 38790	Silencer 4 wall backpanel
26	4322 003 36380	S-Class H-Sealing GP
27	4322 000 38670	Silencer 1 wall

Pos	Service code	Description
28	4322 000 38770	Silencer 2 bottom
29	4322 003 23880	Motorhousing top inside
30	4322 001 73400	Bufferring front ANS-Atlas
31	4322 009 09960	Motor Domel 1271 220 - 240 V
32	4322 000 38820	Silencer 3 compas
33	4322 001 73520	Motor buffer back green
34	4322 003 23870	Motor housing bottom ANS
35	4322 009 00050	Cordwinder assy (No cord)
37	4322 009 09460	Contact ring plate
38	4322 006 07410	U.K. / H.K. L = 9.3 m
39	4322 006 07390	Euro 4.8 mm pins L = 9.3 m
41	4322 003 19110	Swivel seal
42	4322 005 28770	Hose/Swivel/Handle assy
44	4322 005 28740	3-Piece Telescopic tube assy (act. bush)
45	4322 003 17370	Coupling bush
46	4322 007 31650	Coupling spring
47	4322 004 20580	Brush tool *
48	4322 003 34660	Crevice nozzle *
49	4322 005 25790	Accessory holder *
50	4322 005 25800	Small nozzle *
51	4341 004 20840	Tri-Active nozzle, stand.
52	4322 003 26030	Motor bracket
53	4322 005 11040	Polishing disc
54	8838 041 01010	Polishing brushes
55	4322 004 20110	Super Parquet nozzle, standard
56	4322 006 07400	Swiss L = 9.3 m

* Standardized colour







EXPLODED VIEW

FC9178/01

