



Philips Consumer Lifestyle

# Service Manual

## PRODUCT INFORMATION

- This product meets the requirements regarding interference suppression on radio and TV
- After the product has been repaired, it should function properly and has to meet the safety requirements as officially laid down at this moment

## TECHNICAL INFORMATION

- Colour : Icy white
- Power consumption : 2000 W (IEC) 230 V
- Maximum Air displacement : 37 l/s
- Vacuum : 27.5 kPa
- Duststorage capacity : 1.5 L
- Cord length : 9 m
- Motor : Infrared remote controlled
- Filter system : HEPA cyclone-filtration auto-clean system  
: Permanent motor protection filter  
: Ultra Clean Air HEPA13 washable exhaust filter
- Dimensions of cleaner : 485 x 285 x 335 mm
- Net weight : 9.6 kg

## ACCESSORIES

- Nozzle : Tri-Active all purpose nozzle
- Tubes : Metal lacquered telescopic tube with second handgrip
- Hose : Extra large hose
- Handgrip : Ergonomic handgrip with remote control
- Accessories : Brush, crevice nozzle and small nozzle
- Accessory storage : Active accessory storage bridge in handgrip
- Coupling : Button coupling

## OPTIONAL (accessories)

- FC 8031 : Super Clean Air HEPA filter
- FC 8038 : Super Clean Air HEPA washable filter

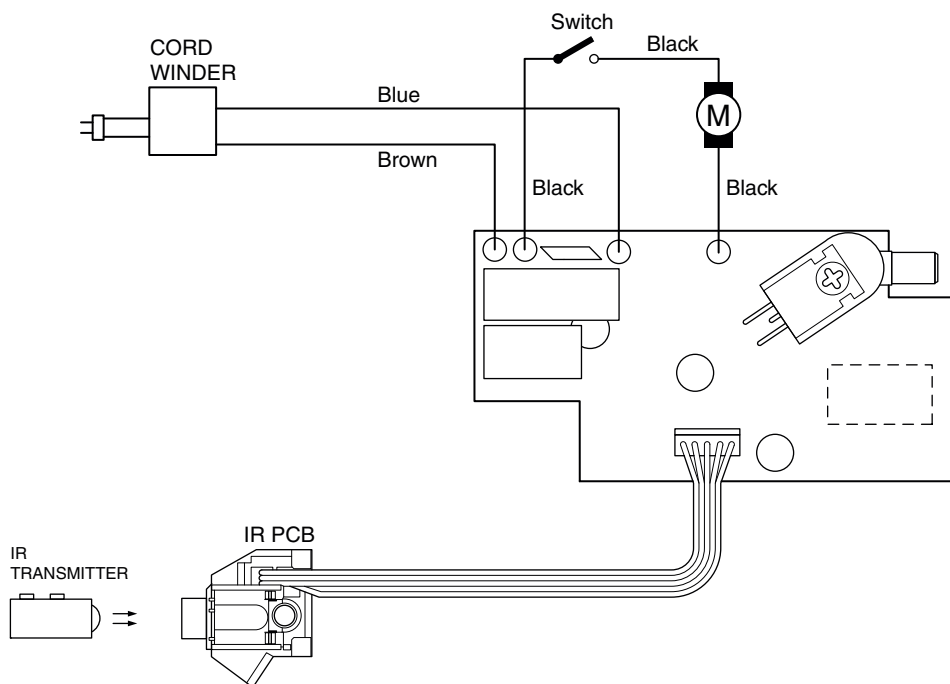
## DISASSEMBLY- AND RE-ASSEMBLY ADVISE

- To open the appliance, first remove the filter cover (item 37).
- Remove the can with the filters.
- Then remove the hinge cover (2 screws **A**)
- When the hinge cover is removed, the dustcover can be removed.
- To remove the housing (6 screws **F**), for some screws you will require a screwdriver with 14.5 cm long shank. Screwdriver 4322 009 08490 for T15 can be used.
- When the repair is finished, check whether all functions of the appliance work properly.
- To disassemble the cord winder, use TORX screwdriver no. T10, which is one of a set consisting of T20; T15; T10; T9; T8; T7 and T6 (code number 4822 395 50145)

## REPAIR INSTRUCTION

- If the reel half spring unit is replaced, shaft (**M**) must be lubricated with silicone grease. Do not apply any silicone grease to or spill any grease on terminals (item 53) or conductors (item 54).
- The cord winder spring must be tensioned to the maximum level and the be rewound approx 1.5 turn.
- Item 13, air valve, opens to cool the motor if the air displacement is too low or if the airflow is blocked.

## ELECTRICAL DIAGRAM



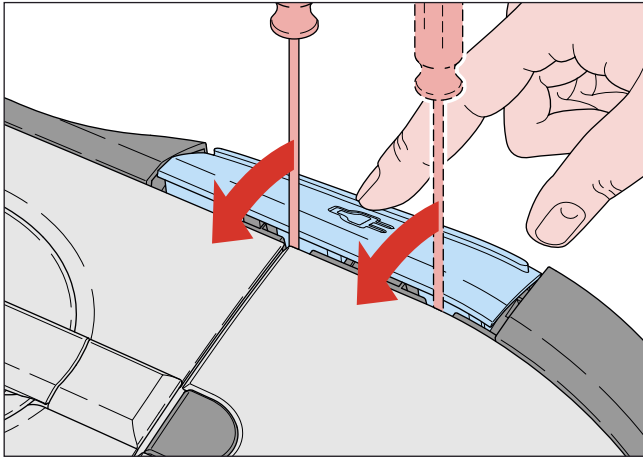
- Appliances from before WK845 have a potential problem in the cord winder system; the lever of spindle (Pos. 24) can move out of position.

## Symptom:

Cord will not rewind pressing the cord winder button.

## Solution:

Remove the Cord winder button as shown in below picture:

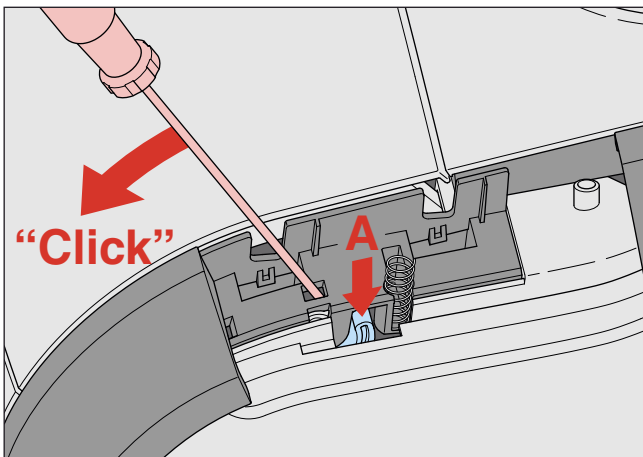


Remove the cord winder button by simultaneously operating the button and putting a screwdriver between the openings that occur.

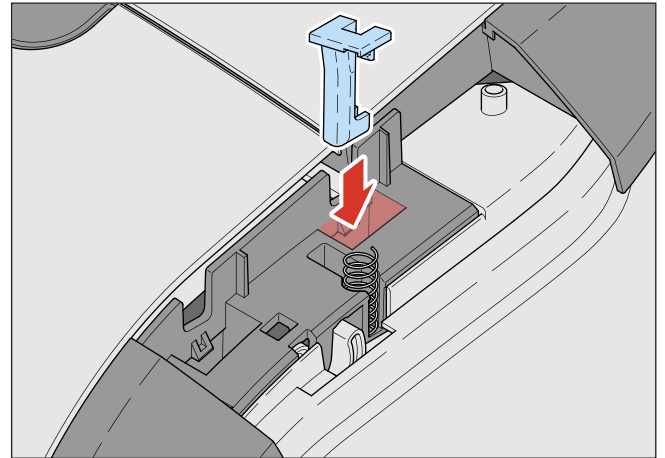
Then lift the button by levering the screwdriver.

This has to be done at 2 (two) positions as indicated in the picture.

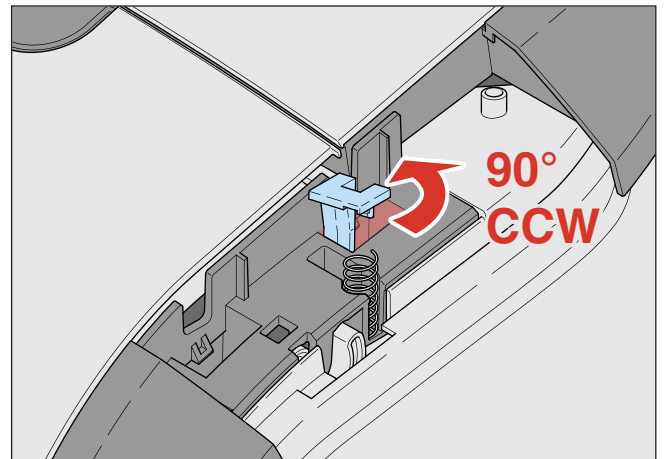
Insert a screwdriver (size 1) in the position as shown in below picture and move it backwards until a “Click” is heard, the lever of spindle is now back in position. This can be tested by pressing lever **A**, the cord should rewind now.



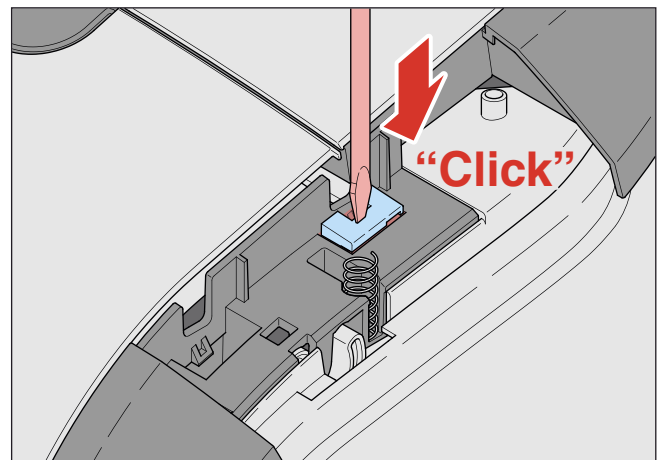
To prevent lever shifting out of position to re-occur, CW support (Pos. 68) must be added as shown in below pictures:



Rotate the part 90 degrees CCW, once it is inside the housing half way.



Then drop the part till it is completely inside the appliance and push down with a screwdriver until “Click”.



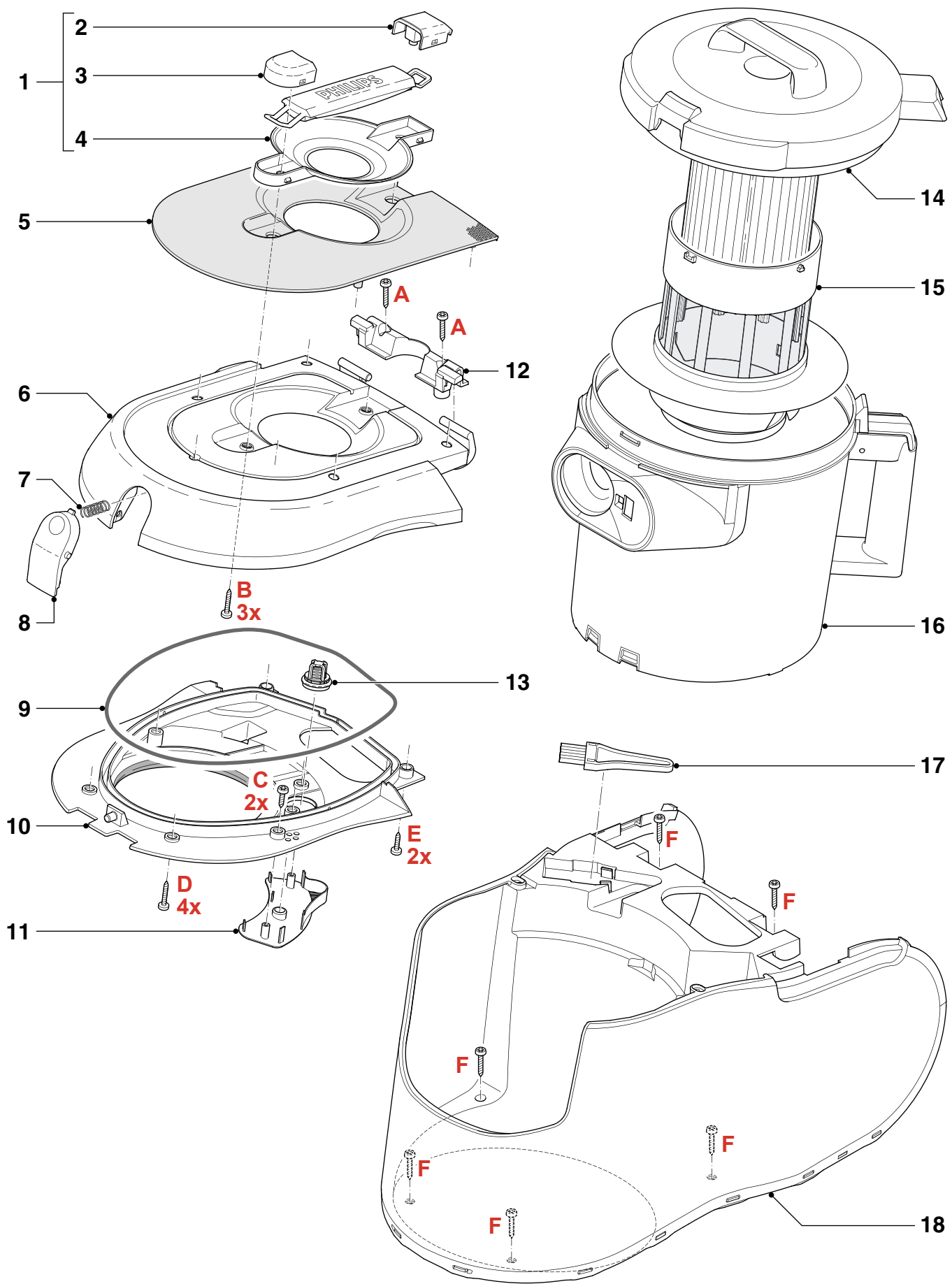
Finally re-assemble the button.  
Press it firmly, until the “Click”.

# PARTS LIST

# FC9256

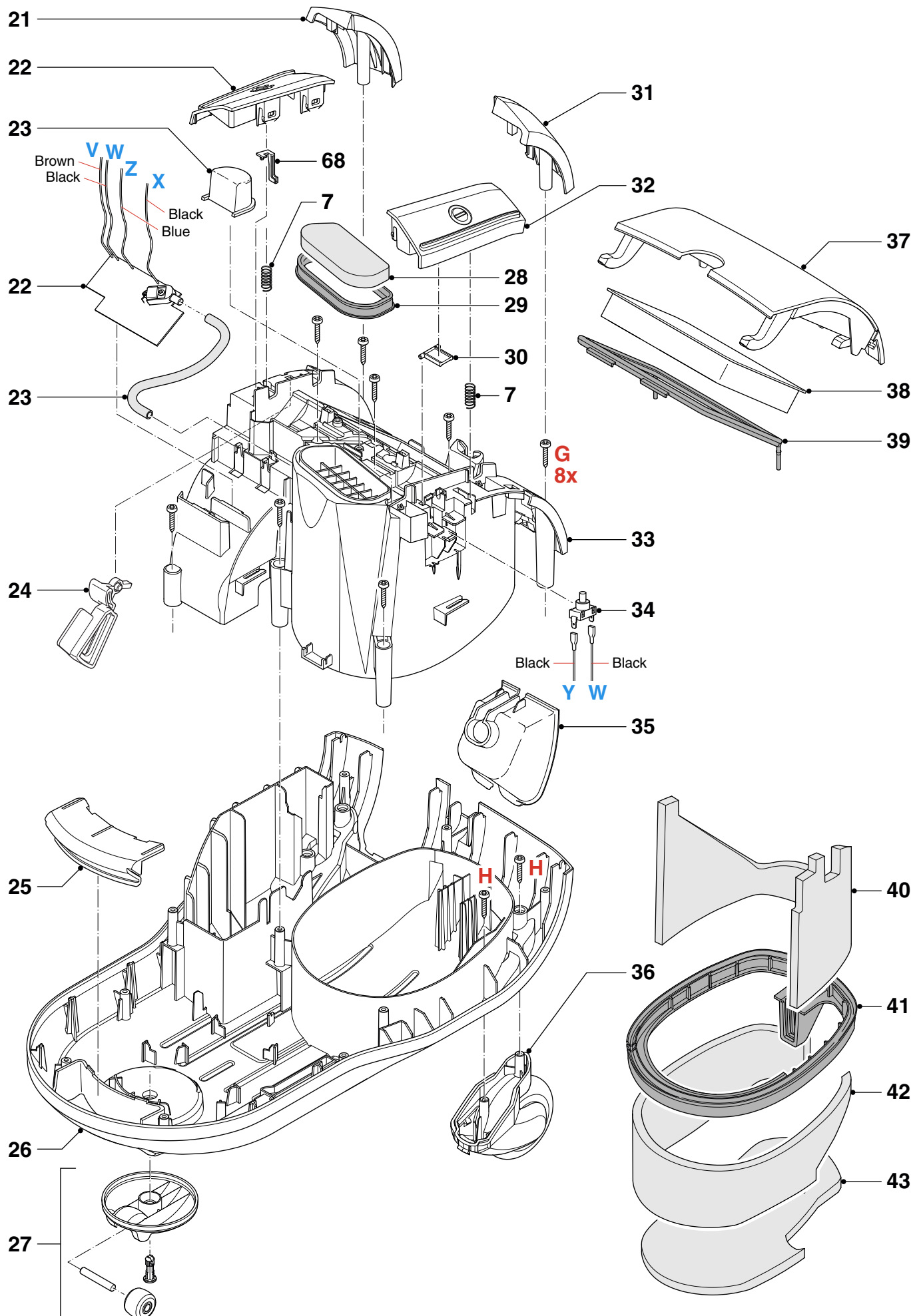
Pos	Service code	Description
1	4322 005 25400	Handle assy
2	4322 003 34210	Handle side rear
3	4322 003 34200	Handle side front
4	4322 003 34180	Handle support
5	4322 003 33820	Dustcover toppanel Frozen blue
6	4322 003 33810	Dustcover Ice White
7	4322 000 68230	Spring
8	4322 003 33880	Dustcover lock button Ice White
9	4322 001 73910	Dustcover sealing
10	4322 003 33870	Dustc. inside incl. seal. Ice White
11	4322 003 35160	Choke valve cover Ice White
12	4322 003 33890	Hinge cover Ice White
13	4322 005 26540	Choke valve assy
14	4322 009 09840	Man. rattle filt. cyl. assy Ice White
15	4322 003 32920	Tower assy
16	4322 005 25230	Bucket assy Transp. frozen blue
17	4322 004 20130	Filter Brush
18	4322 005 25130	Upperh. sidec. assy Transp. fr. blue
19	4322 003 33790	Bumper right Ice White
20	4322 005 27170	Cordwinder button Ice White
21	4322 005 27470	RMC window assy
22	4322 006 23510	PCB assy incl. IR
23	4322 001 74100	Cooling tube
24	4322 003 31310	Lever of spindle
25	4322 003 33640	Front handle Ice White
26	4322 003 33630	Lower housing Ice White
27	4322 005 25120	Caster wheel assy Ice White
28	4322 000 39120	Motor inlet filter
29	4322 003 32890	Inlet sealing 2
30	4322 003 32900	Switch lever
31	4322 003 33800	Bumper left Ice White
32	4322 005 27180	On/Off button Ice White
33	4322 003 33720	Backpanel Ice White
34	4322 006 07750	Switch
35	4322 003 33710	Cord outlet Ice White

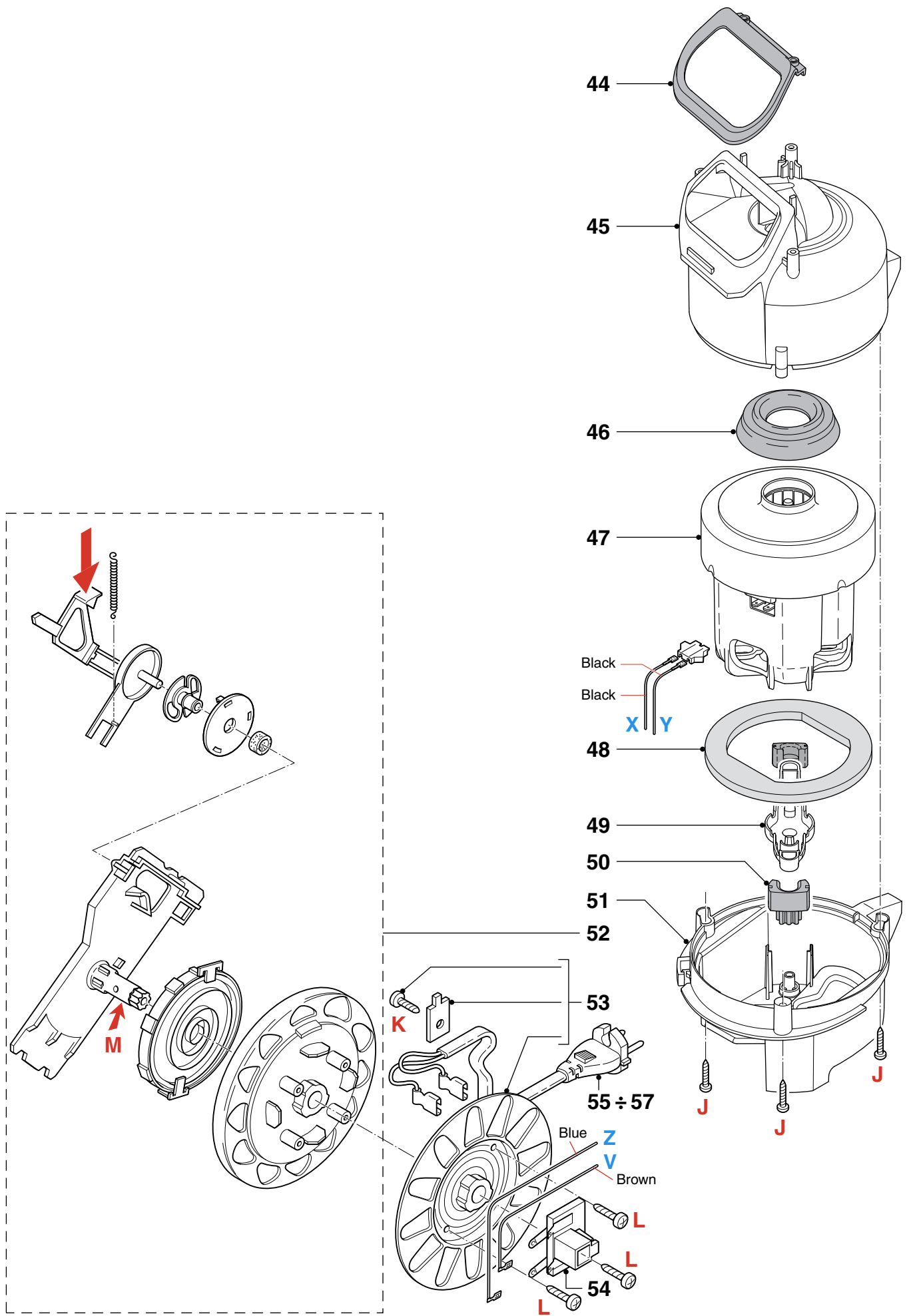
Pos	Service code	Description
36	4322 005 25110	Skate wheel assy Frozen blue
37	4322 005 25150	Exhaust grille assy Frozen blue
38	4322 004 93350	HEPA13 filter washable
39	4322 000 38960	Exhaust sealing
40	4322 000 39020	Silencer 4
41	4322 003 31220	S-class H sealing
42	4322 000 39000	Silencer 1 wall
43	4322 000 39010	Silencer 2 bottom
44	4322 003 25390	Inlet sealing 1
45	4322 003 31240	Motorhousing top
46	4322 001 73440	Motorbuffer front
47	4322 009 09430	Motor 1761 220 - 240 V
48	4322 000 39110	Silencer 3 VCM
49	4322 003 26030	Motor bracket
50	4322 001 73520	Bufferback green
51	4322 003 31250	Motorhousing bottom
52	4322 005 18670	Reelhalf spring unit
53	4322 005 17430	Reelhalf cordside assy
54	4322 005 17910	Contactplate assy
55	4322 006 07410	Cordset UK/HK 9.3 m
56	4322 006 07390	Cordset Euro 4.8 mm 9.3 m
57	4322 006 07400	Cordset Swiss 9.3 m
58	4322 005 25770	Battery lid assy
59	4322 009 09910	Bend type 2 assy
60	4322 005 25270	Hose XL/conn. assy Ice White
61	4322 009 09920	Hose XL/connection/bend type 2 assy Ice White
62	4322 005 25790	Accessoiry holder
63	4322 003 34660	Crevice nozzle
64	4322 005 25800	Small nozzle
65	4322 004 20580	Brush tool
66	4322 005 27320	2pc Telesc. tube sec. handle assy
67	4341 004 20840	Tri-active nozzle
68	4322 003 35650	CW Support



# EXPLODED VIEW

# FC9256







EXPLODED VIEW

FC9256

