



Philips Consumer Lifestyle

# Service Manual

## PRODUCT INFORMATION

- This product meets the requirements regarding interference suppression on radio and TV.
- After the product has been repaired, it should function properly and has to meet the safety requirements as officially laid down at this moment.

## TECHNICAL INFORMATION

- Colour : Belluga
- Energy efficiency rating : A
- Input power (IEC) : 650 W
- Suction Power : 180 W
- Noise level : < 82 dBA
- Action radius : 11 mtr
- Cord length : 7 m
- Filtration : Power cyclone  
EPA 12 Super Clean Air
- Dimensions appliance : 505 x 292 x 292 mm
- Dimensions F-box : 650 x 330 x 310 mm
- Weight : 5.5 kg

## ACCESSORIES

- Standard nozzle : Tri-Active nozzle Max
- Additional nozzle : Diamond flex nozzle and Alma HF nozzle
- Tubes : Metal 2-piece telescopic tube
- Accessories : Crevice tool, Small nozzle
- Accessory storage : On tubeclip
- Coupling : SmartLock

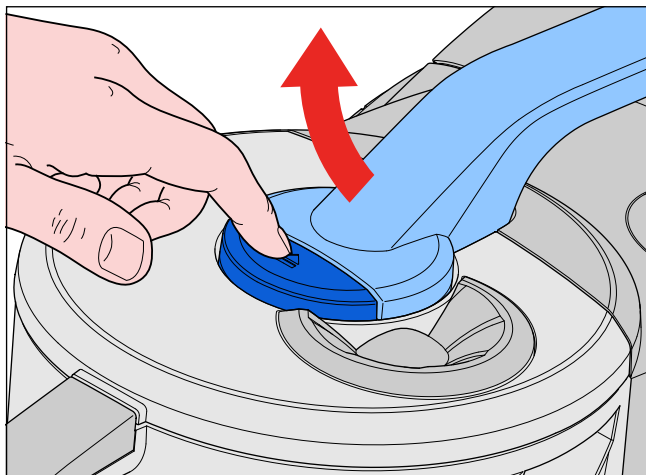
## REPAIR INSTRUCTION

- No specific issues

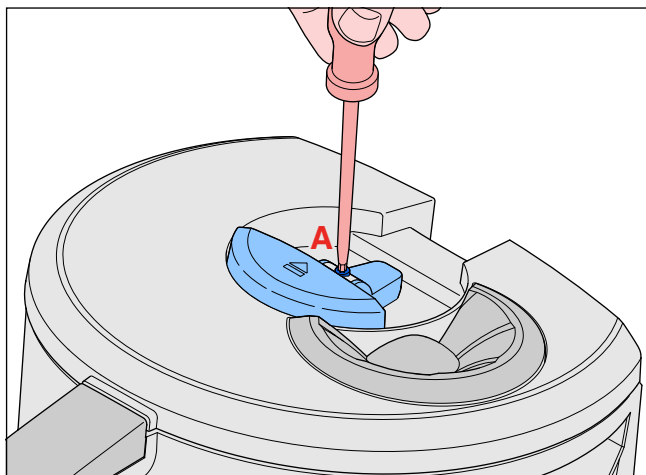
## OPTIONAL (accessories)

- FC8038 : HEPA13 washable Exhaust filter

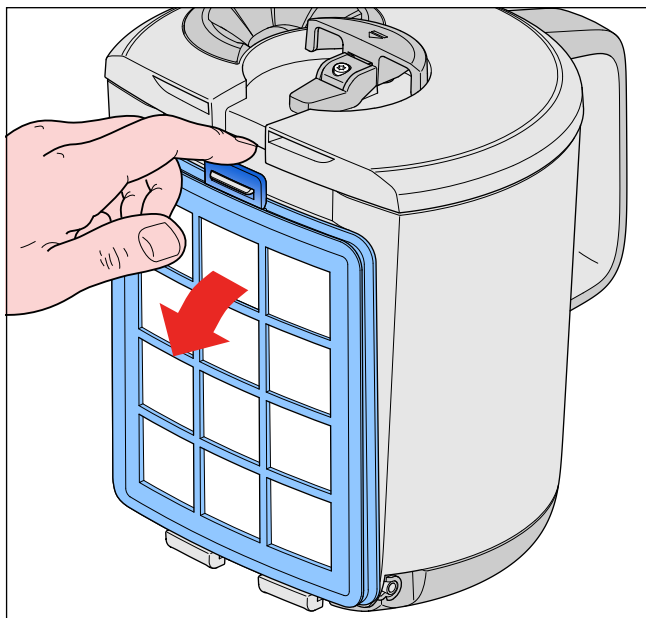
- To remove the Bucket, unlock the top handle by pushing the button on the lid of Bucket (see picture).



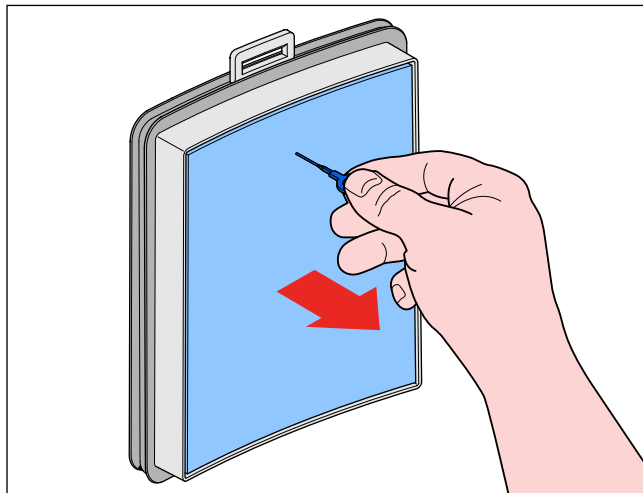
- The button (3) on the lid is a spare part, it can be replaced by removing screw A (see picture).



- The bucket can only be placed back with the lid mounted and positioned in the correct way, otherwise the handle cannot be closed.
- The Inlet filter assy (4) on the front (motor side) of the Bucket can be removed by pulling the lip at the top (see picture).



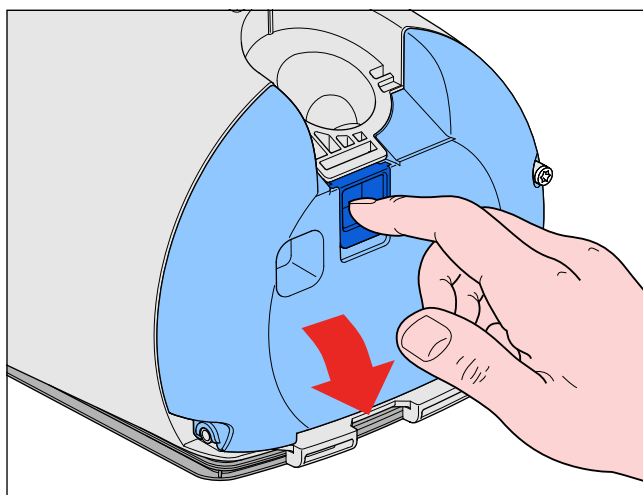
- The foam in the Inlet filter assy can be cleaned. By pulling the plastic ring the foam filter can be removed without touching the dirt on the filter (see picture).



- The bottom of the Bucket can be removed as shown in the picture below.

## Remark:

The Bucket can be placed back without the bottom, this will not lead to a safety problem, but all the dust will get into the bottom housing.

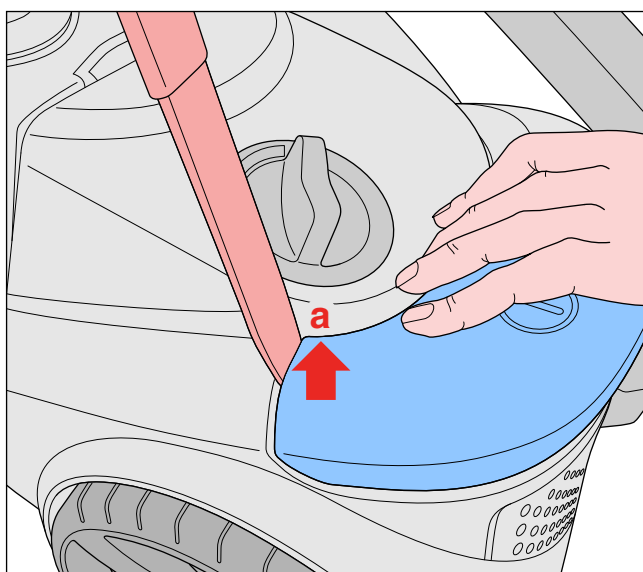
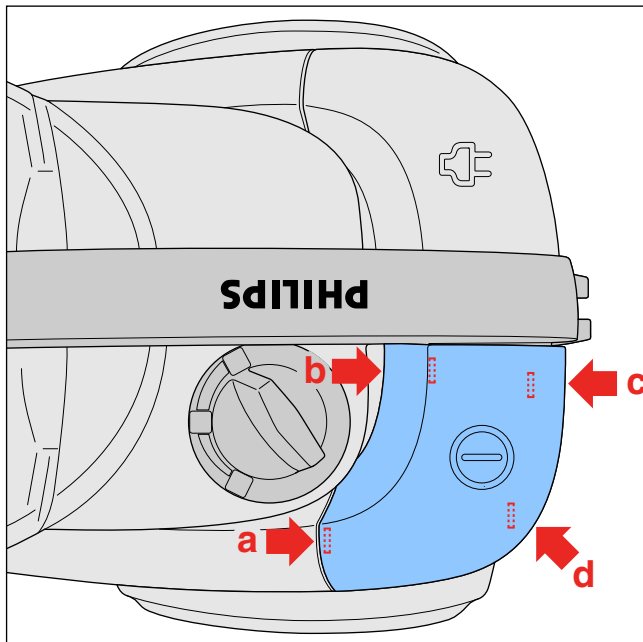


## DISASSEMBLY - AND RE-ASSEMBLY ADVISE

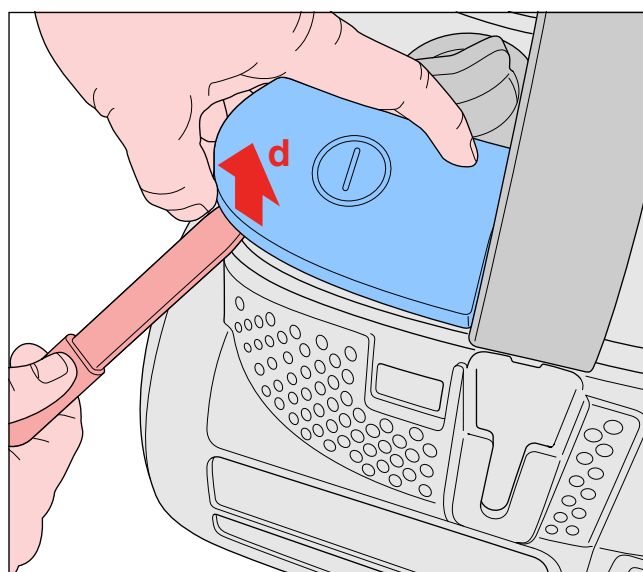
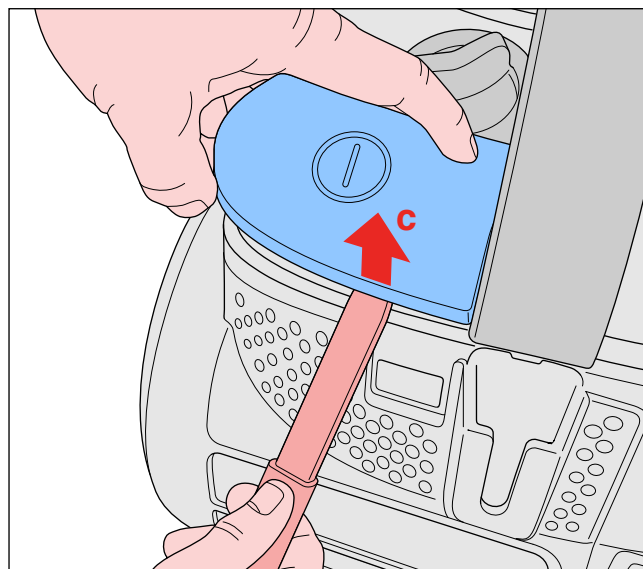
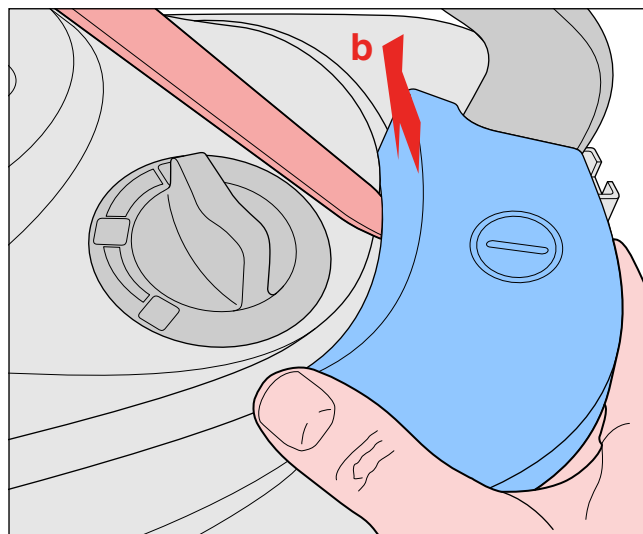
- To reach the inner parts for repair, Upper housing (18) has to be removed. First the On/Off button (17) and Cordwinder button (16) must be removed, this can be done with a screwdriver.

### Remark:

The two buttons are secured with 4 "snap locks", be careful when removing (see picture).



- When lifting at position **b** push the button a little towards the front side.



- When assembling, the buttons can easily be mounted by clicking, start at the side of the handle.

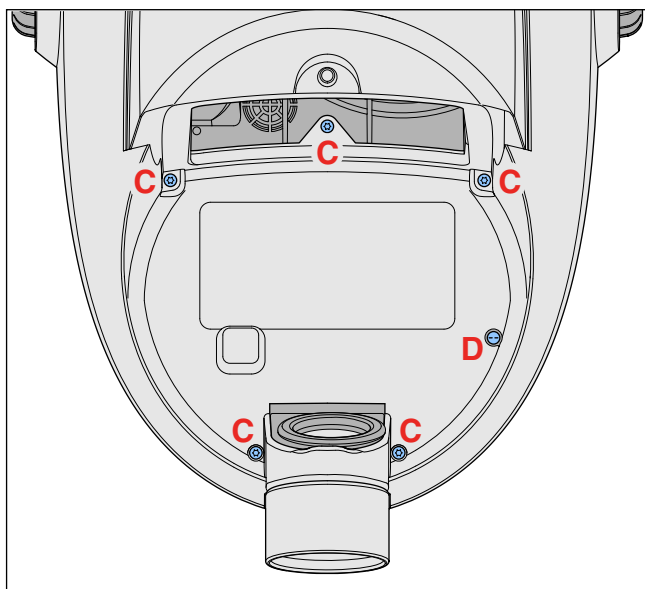
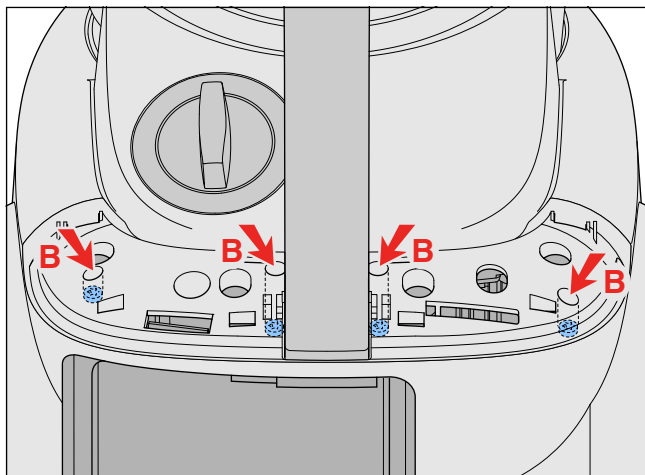
### Remark:

Check that the two springs are in the correct position.

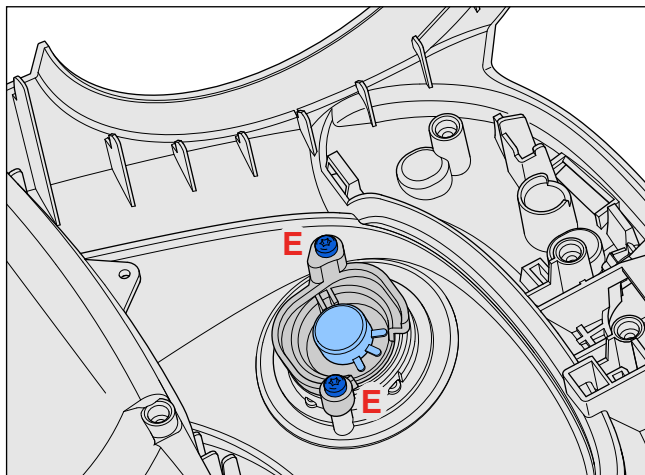
## DISASSEMBLY - AND RE-ASSEMBLY ADVISE

# FC9723/09

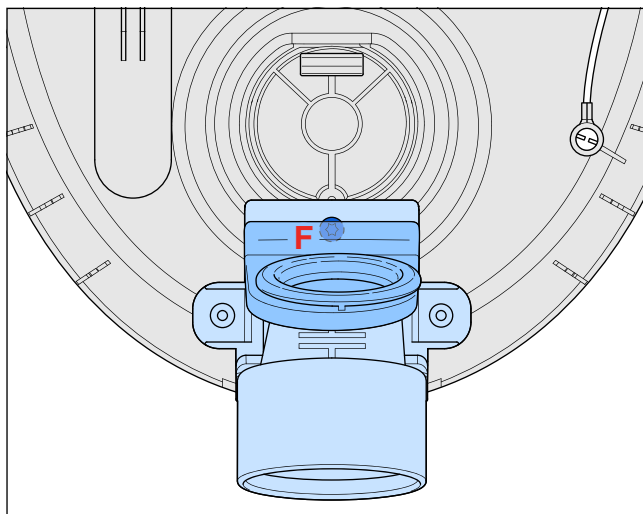
- After removing the two buttons remove the 4 screws **B** at the back and the 5 screws **C** at the front of the upper housing (see pictures).
- Screw **D** at the front does not need to be removed, this screw is for ESD and is located in the lower housing.



- To replace the potmeter (9) situated at the bottom of the upper housing, remove knob (7) on top of the upperhousing and remove the 2 screws **E** at the bottom of the upper housing (see picture).



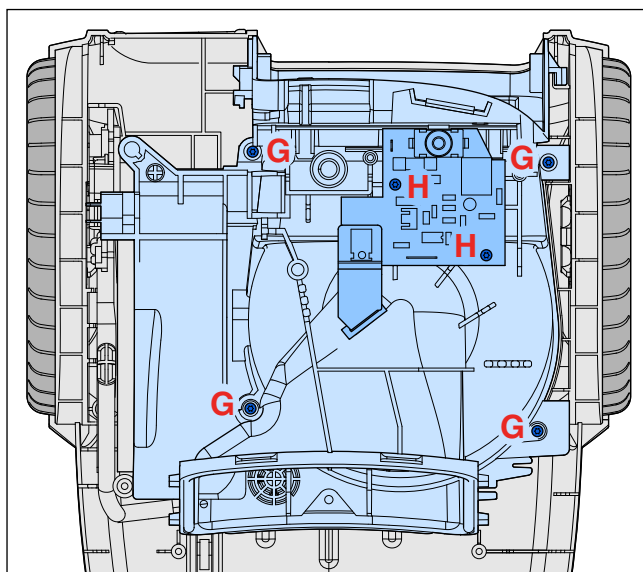
- After removing the upperhousing, Hose connection (10) and Bucket inlet sealing (13) are accessible. To replace the hose connection screw **F** has to be removed.



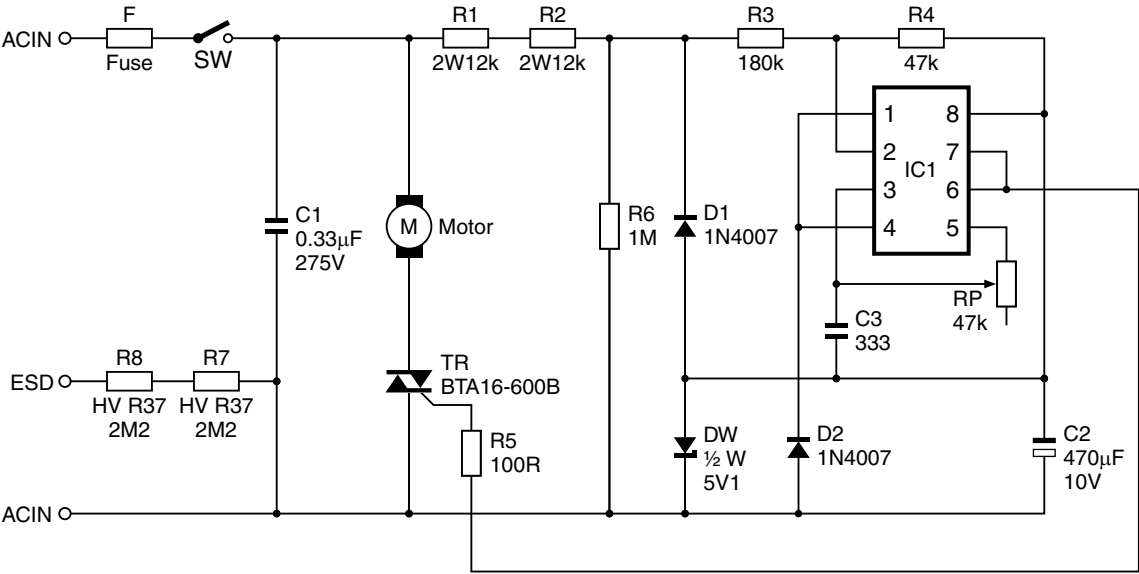
- To replace Cordwinder (24) or Motor (31) Motor housing (28) has to be removed, this can be done by removing the 4 screws **G** (see picture).

### Remark:

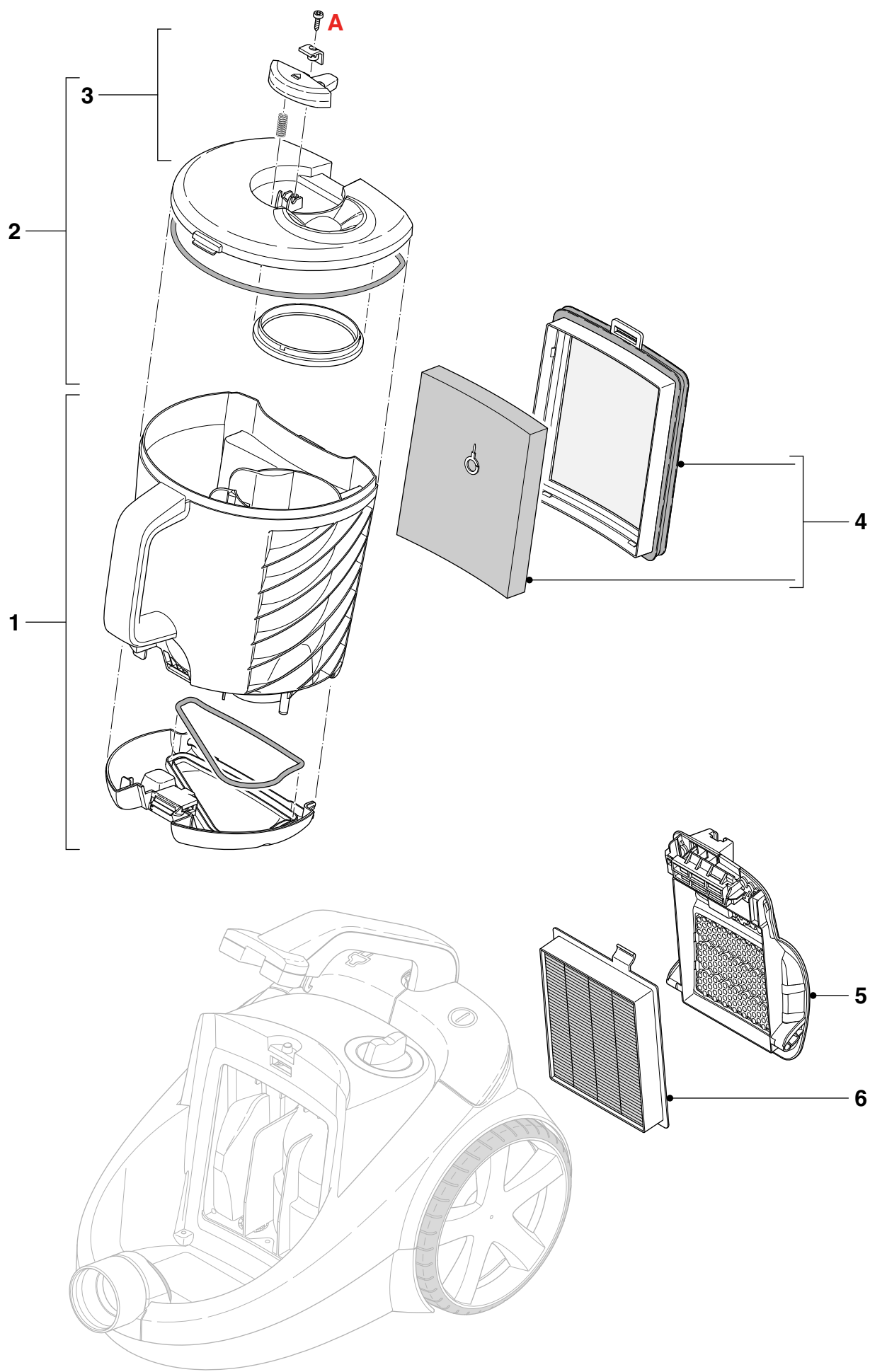
A special long screw driver is needed!



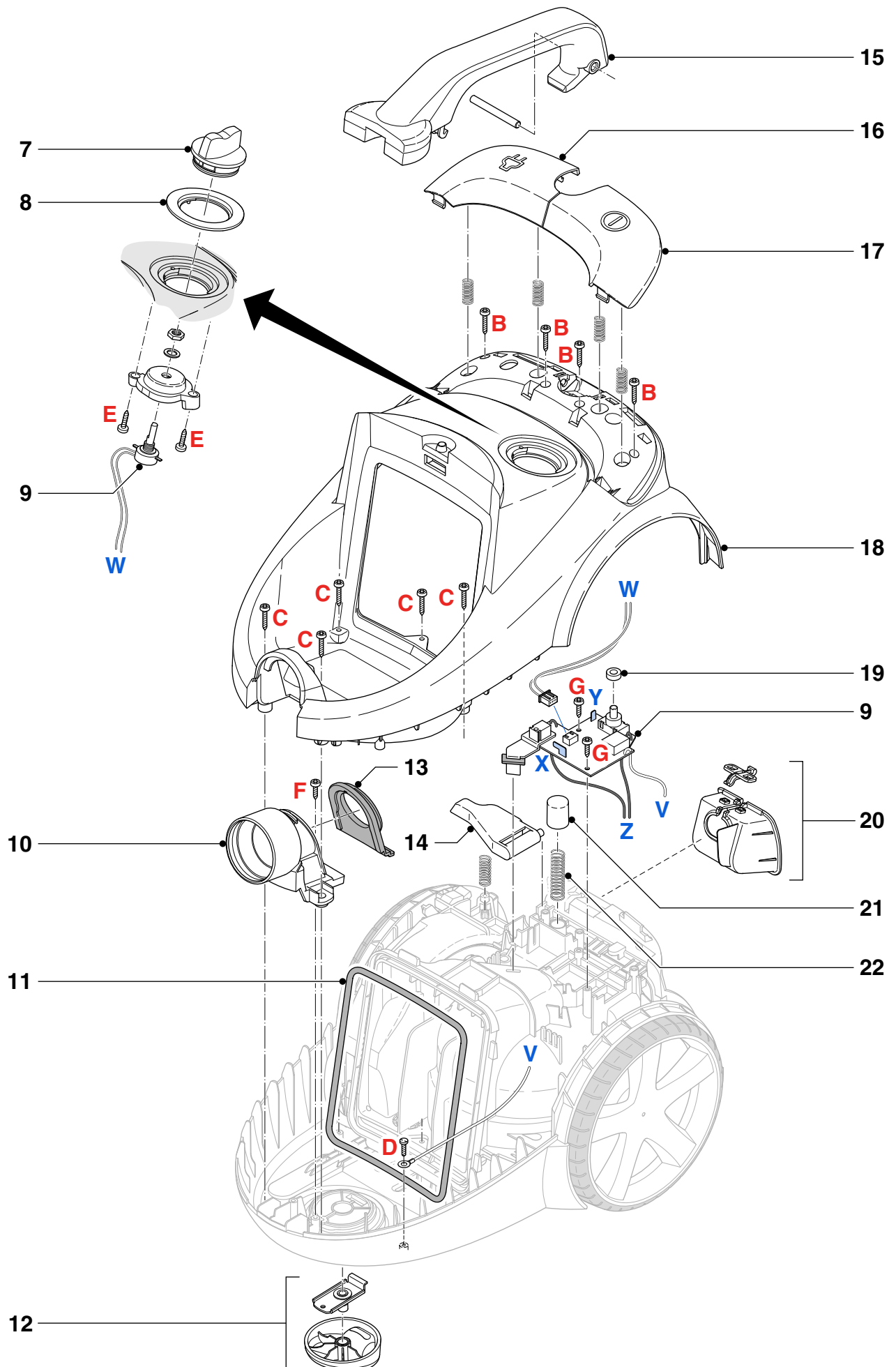
- To replace the PCB (9) remove the 2 short screws **H**.



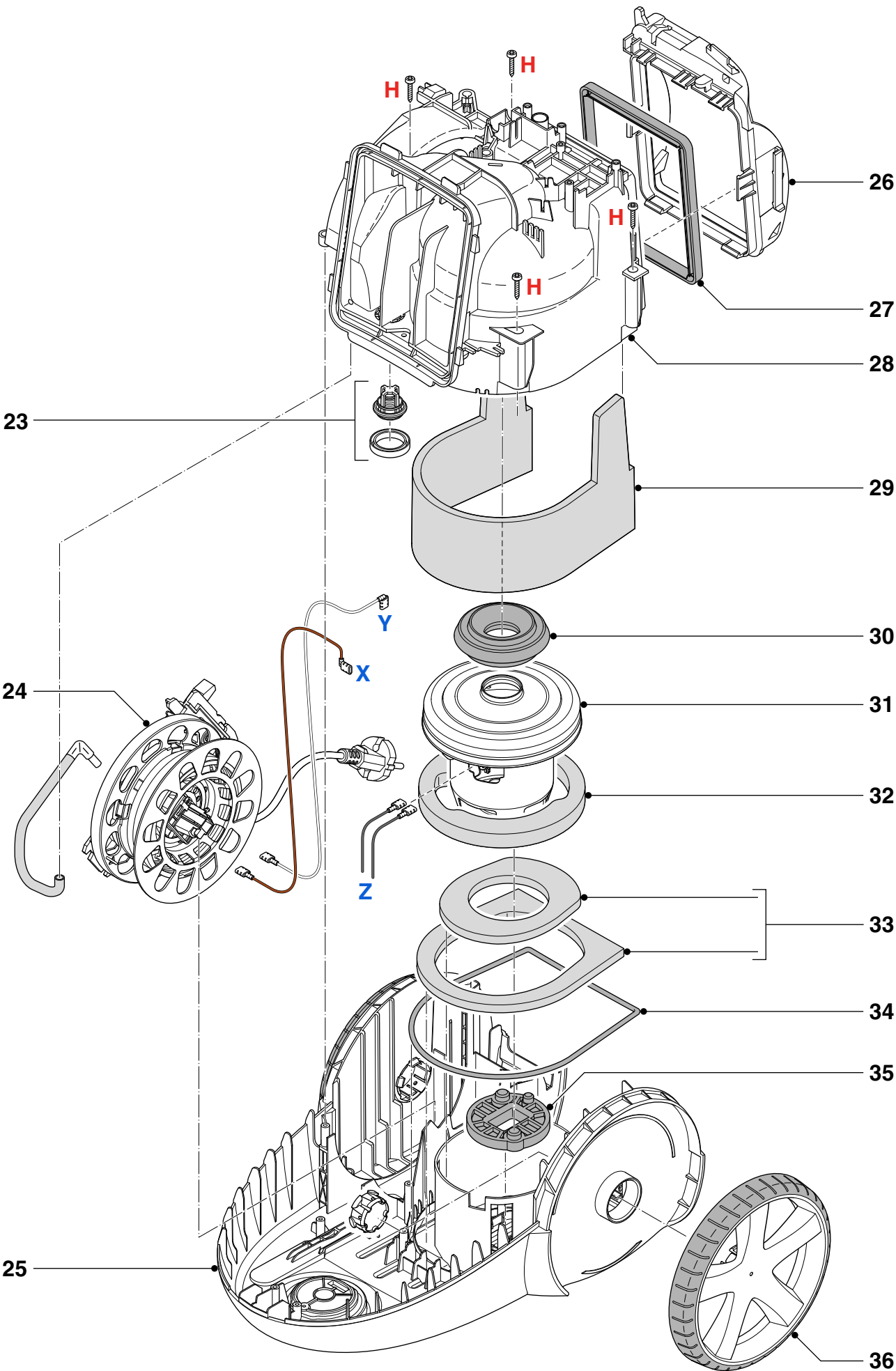
Pos	Service code	Description	Remark
1	9965 100 70535	Bucket assy	
2	9965 100 51299	Lid assy	
3	9965 100 51311	Unlock button	
4	4322 005 33153	Inlet filter assy	
5	9965 100 51318	Exhaust grille assy	
6	4322 004 93341	HEPA 13 washable filter large	Cougar
	4322 004 93791	Filter EPA 10	
7	9965 100 51319	Turn knob	
8	9965 100 51312	Decorative ring	
9	4322 006 25071	PCBA	Cougar ECO
10	9965 100 51305	Hose connection	
11	9965 100 51306	Inlet sealing	
12	9965 100 51324	Caster assy	
13	9965 100 51308	Bucket inlet sealing	
14	9965 100 51323	Cordwinder lever	
15	9965 100 51322	Top handle assy	
16	9965 100 51297	CW button	
17	9965 100 51301	On/Off button	
18	9965 100 70541	Upper housing	Titanium Metallic
19	9965 100 51327	Protection ring (on switch)	
20	9965 100 51321	Cord outlet assy	
21	9965 100 51325	Handle pushing tube	
22	9965 100 51326	Handle pushing tube spring	
23	4322 005 35391	Safety valve assy	Powerpro ECO
24	4322 005 26072	Cordwinder	7 m / 4.8 / 0.75 / Cougar
25	9965 100 51303	Lower housing	
26	9965 100 51313	Motor housing cover	
27	9965 100 51316	Exhaust sealing	
28	9965 100 61664	Motor housing	
29	9965 100 51304	Silencer motor housing	
30	9965 100 51317	Motor sealing ring	
31	4322 006 99431	761 Global 750 W AW	230 V / 50 Hz
32	9965 100 51296	Motor silencer	
33	9965 100 51315	Silencer lower housing	
34	9965 100 51314	Motor housing sealing	
35	9965 100 51328	Motor buffer back	
36	9965 100 70537	Rear wheel assy	Sparkle Silver
37	4322 009 01071	Hose curved bend assy	
38	4322 004 24624	2 T.T. Tube	85 cm Cobra Easyfit
40	4322 004 24812	Accessory holder assy 2	
41	4322 004 25731	Tri-Active nozzle Max Smart lock	Deep Black
42	4322 004 25751	Diamond flex nozzle conical 35 mm	Deep Black 80231
43	4322 004 26051	Alma HF nozzle Conical 35 mm PH	Deep Black

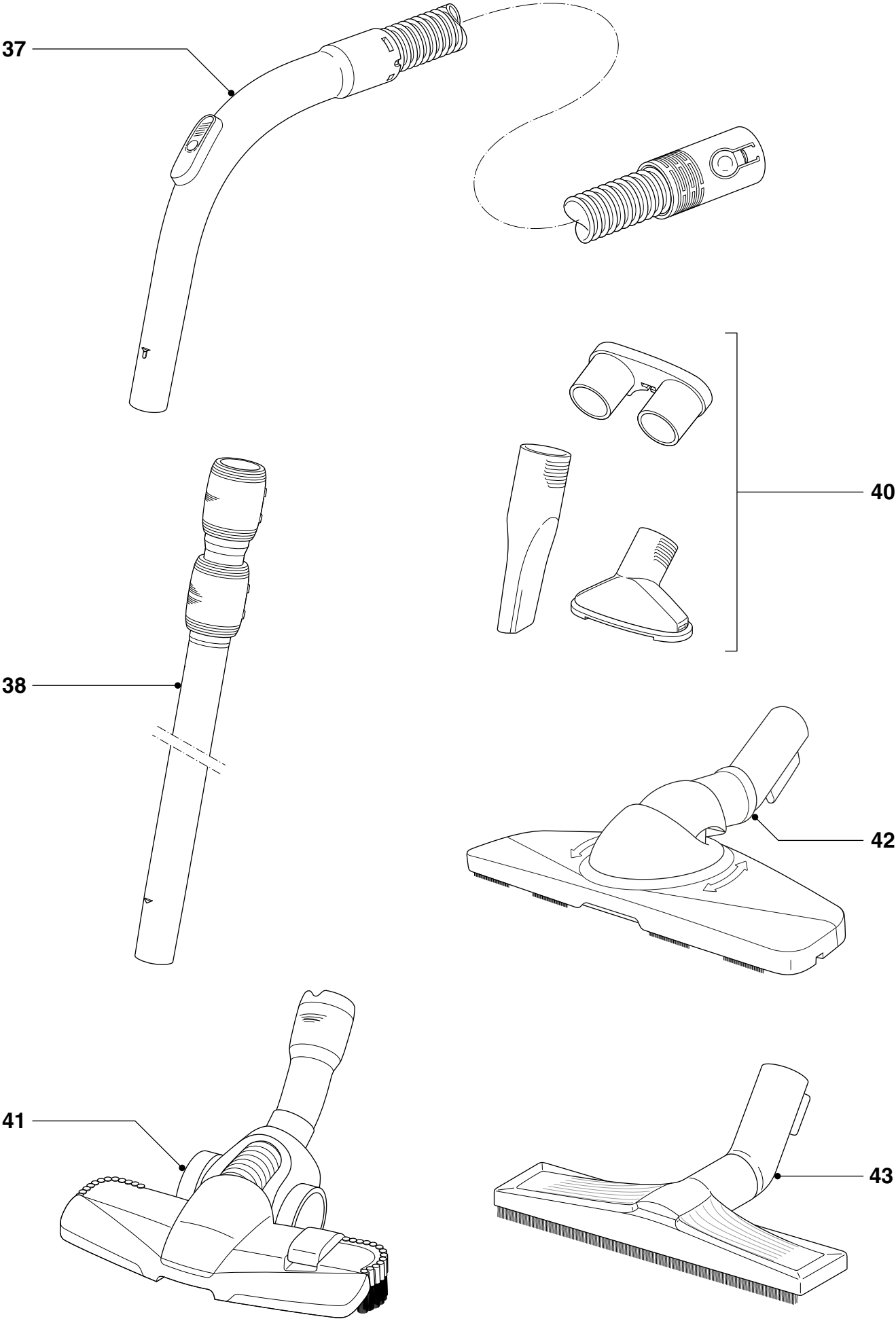












## Version history

- 14/08 Version 1.1 : FC9723/09 initial release.
- 14/10 Version 1.2 : On page 1 at Optional, added FC8038 : HEPA13 washable Exhaust filter.
- 14/10 Version 1.3 : Added in the Parts list at Pos. 6: 4322 004 93341 HEPA 13 washable filter large.
- 14/11 Version 1.4 : In Parts List at Pos. 24, changed 4322 005 33173 Cordwinder Cougar 7 m / 4.8 plug into  
4322 005 26072 Cordwinder 7 m / 4.8 / 0.75 / Cougar.
- 15/03 Version 1.5 : On page 1 under Accessories Added Additional nozzle : Alma HF nozzle.  
In Parts List and Exploded view: Added Pos. 43:  
4322 004 26051 Alma HF nozzle Conical 35 mm PH Deep black.
- 15/08 Version 1.6 : Updated picture on front page.  
On page 1 at Technical Information, changed Suction Power : 340 W into 180 W.
- 16/04 Version 1.7 : In Parts List at Pos. 4, changed 4322 005 33152 Inlet filter assy into 4322 005 33153.