

Service
Service
Service



Philips Domestic Appliances and Personal Care

Service Manual

PRODUCT INFORMATION

Features

Iron

- Optinox soleplate
- Steam trigger lock
- Ready within 2 minutes
- Stable heel rest
- Iron light switch

Boiler

- Steam rate (90 grams/min)
- Boiler capacity (1 L, up to 2 hours of ironing)
- Ready within 8 minutes
- 1.9 m cord length
- 1.7 m hose length
- Anti-slip rubber feet
- Boiler light switch

Safety Information

- This product meets the requirements regarding interference suppression on radio & TV.
- Due to the high wattage of the iron, only the specified cord set must be used.
- After the product has been repaired, it should function properly and has to meet the safety requirements & legal regulations as laid down & officially established at this moment.

TECHNICAL INFORMATION

Voltage : 230 V
Frequency : 50 - 60 Hz

Power consumption : Iron : 800 W
Boiler : 1250 W
Pressure : 3.7 bar

Dimension (F-box) : 412 x 276 x 332 mm
Weight : 6.06 Kg

Water advice : Suitable for tap water use. However if the tap water in your area is very hard, we advise you to mix it with a equal portion of distilled water or to use distilled water only.

BACKPLATE 5**SWIVEL 14**

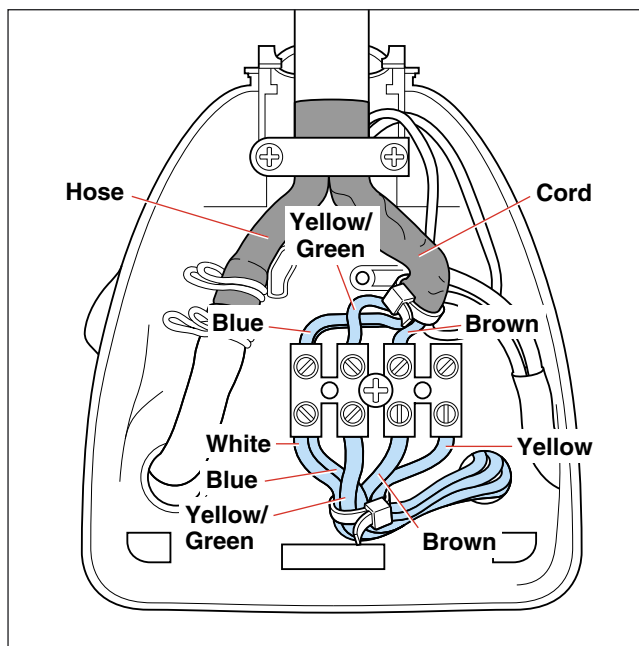
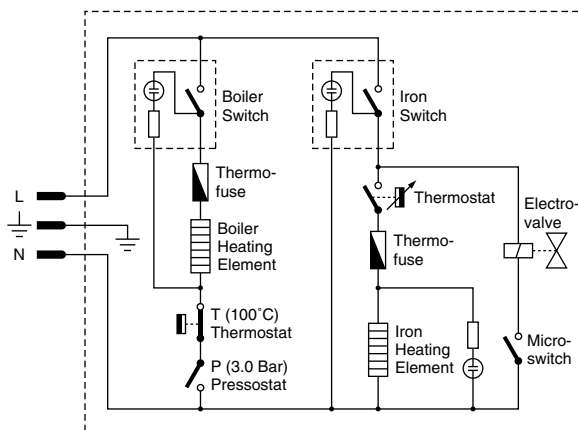
- Remove screw A
 Disassemble **BACKPLATE 5**
 Remove screw B (2x)
 Remove cord clamp

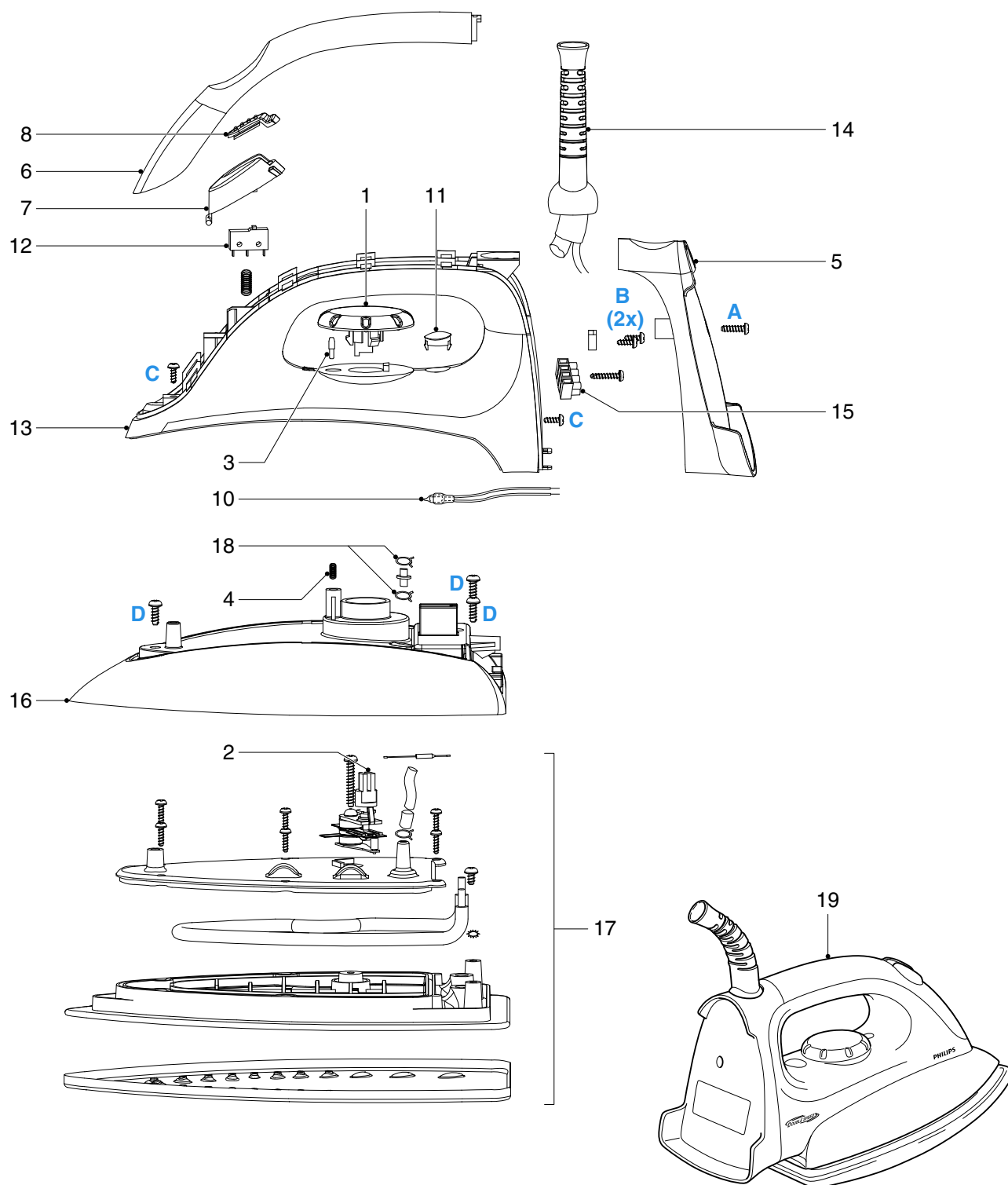
INLAY 6**STEAM KNOB 7****MICROSWITCH 12**

- Remove screw A
 Disassemble **BACKPLATE 5**
 Disassemble **INLAY 6**

TEMPERATURE DIAL 1**IRON LAMP ASSY 10****IRON HANDLE 13****IRON COVER 16****SOLEPLATE MTD ASSY 17**

- Remove screw A
 Disassemble **BACKPLATE 5**
 Disassemble **INLAY 6**
 Disassemble **TEMPERATURE DIAL 1**
 Remove screw C (2x)
 Disassemble **IRON HANDLE 13**
 Remove screw D (3x)
 Disassemble **IRON COVER 16**

Hose-cord Assembly Connections**Electrical Diagram**



Pos	Service code	Description
1	4239 022 55450	Temperature dial
2	4239 022 55370	Thermostat bush
3	4239 022 55480	Sliding probe
4	4239 022 55470	Sound spring
5	4239 022 55400	Backplate
6	4239 022 55380	Inlay
7	4239 022 55420	Steam knob
8	4239 022 55430	Fix piece
9	4239 022 55510	Steam knob spring
10	4239 022 55520	Iron lamp assy

Pos	Service code	Description
11	4239 022 55410	Iron lamp cover
12	4239 022 55500	Microswitch
13	4239 022 55390	Iron handle
14	4239 022 55440	Swivel
15	4239 022 55490	Small terminal block
16	4239 022 55350	Iron cover (Blue)
17	4239 022 55360	Soleplate mounted assy
18	4239 022 55460	Hose clip
19	4239 022 59040	Iron assy - Western Europe

■ = changed

HEAT INSULATION PLATE 22**TOP COVER 23****BOILER MOUNTED ASSY 31**

Remove screw G (5x)
 Disassemble TOP COVER 23
 Straighten ear locks of Heat Insulation Plate
 Disassemble HEAT INSULATION PLATE 22

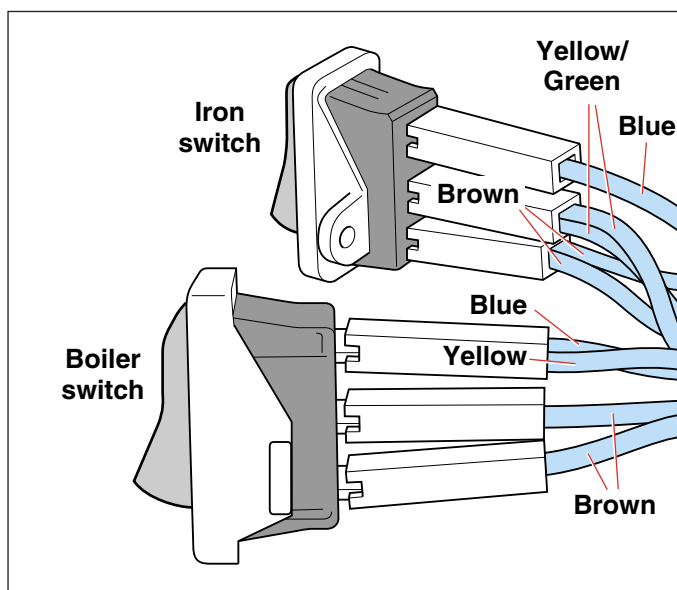
FACE PLATE 26**LIGHT SWITCH HOLDER 29****LIGHT SWITCH 30**

Remove screw G (5x)
 Disassemble TOP COVER 23
 Remove screw E (4x)
 Disassemble FACE PLATE 26
 Remove screw F (4x)
 Disassemble LIGHT SWITCH HOLDER 29

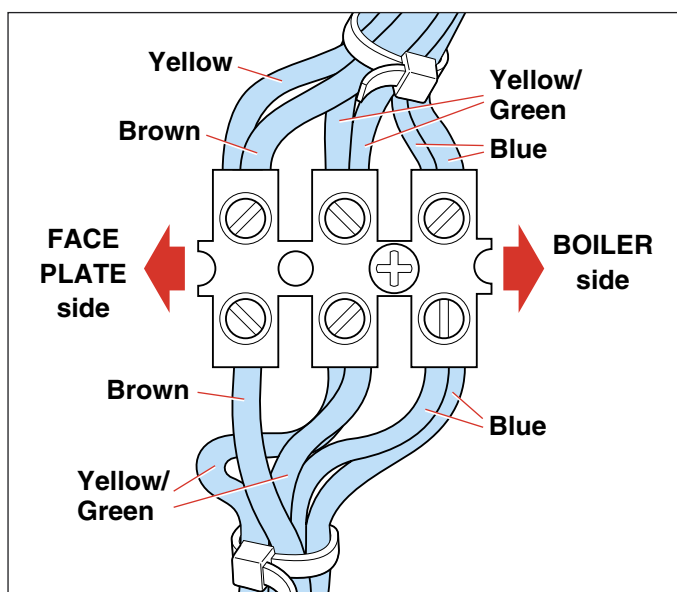
HOSE-CORD ASSY 40**POWER CORD 41**

Remove screw G (5x)
 Disassemble TOP COVER 23
 Remove screw J (3x)
 Disassemble STAND CORD CLAMP 35

Connections on LIGHT SWITCH 30



Connections on BIGTERMINAL BLOCK 34

**Note:**

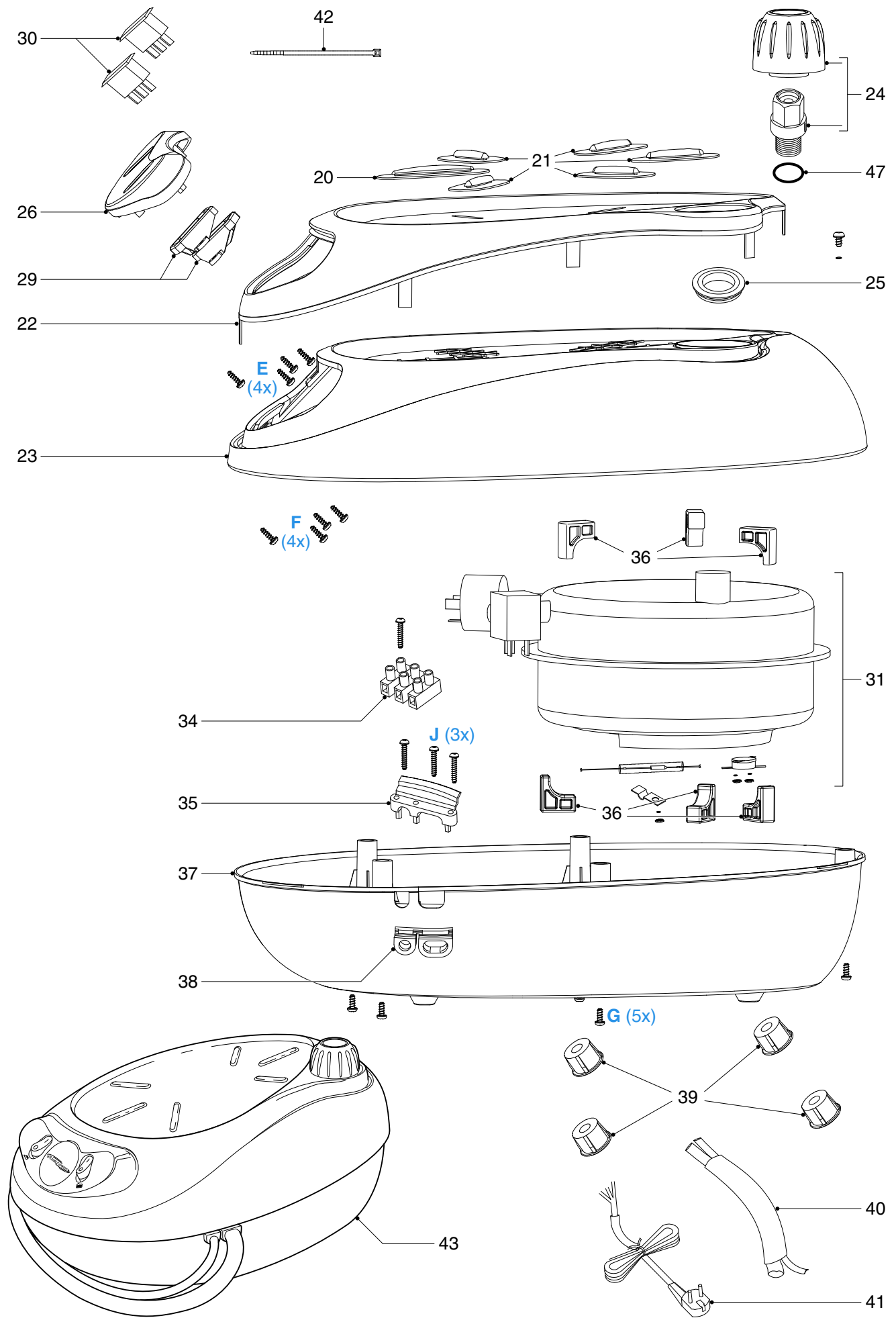
When replacing HOSE-CORD ASSY 40, please refer to IMPORTANT directives in the REPAIR INSTRUCTIONS on page 6.

Pos	Service code	Description
20	4239 022 55630	Silicon cap A
21	4239 022 55640	Silicon cap B
22	4239 022 55560	Heat insulation plate
23	4239 022 59010	Top cover (Blue)
24	4239 022 55650	Safety cap
25	4239 022 55660	Filling hole gasket
26	4239 022 59020	Face plate
29	4239 022 55600	Light switch holder
30	4239 022 55840	Light switch
31	4239 022 55720	Boiler mounted assy
34	4239 022 55850	Big terminal block

Pos	Service code	Description
35	4239 022 55790	Stand cord clamp
36	4239 022 55540	Boiler foot
37	4239 022 55530	Bottom cover
38	4239 022 55690	Guard jacket
39	4239 022 55680	Stand foot
40	4239 022 55800	Hose-cord assy
41	4239 022 55810	Power cord - Europe & Korea
	4239 022 55830	Power cord - Malaysia & Singapore
42	4239 022 55670	Cable tie
43	4239 022 59030	Stand assembly - Western Europe
47	4239 022 58590	Safety valve sealing ring

EXPLODED VIEW - BOILER STAND

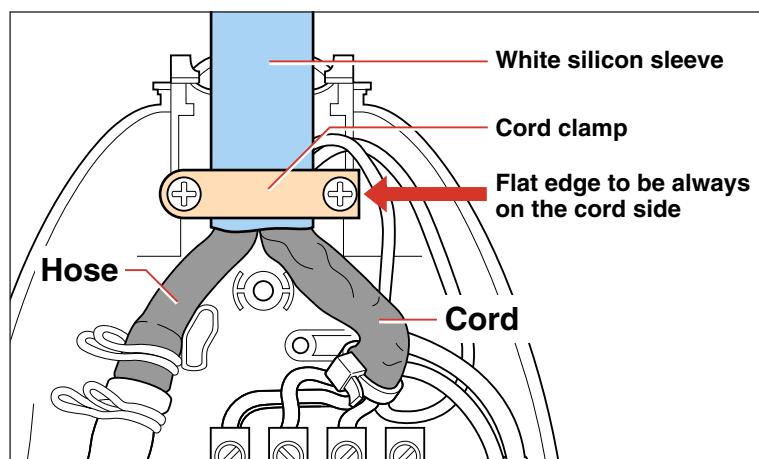
GC6106



- Due to the high wattage of the iron, only the specified cord set must be used.
- Should damage be observed on the **HOSE-CORD ASSY 40** or **POWER CORD 41**, they must be replaced. Continued usage is not allowed.

When replacing **HOSE-CORD ASSY 40**, it is **IMPORTANT** to ensure that the white silicon sleeve is held tightly by the cord clamp. Below picture shows the correct position of the silicon sleeve with respect to the cord clamp.

Do also ensure that the orientation of the cord clamp is correct i.e. such that the round end is on the left & the flat end is on the right, as shown in the picture.



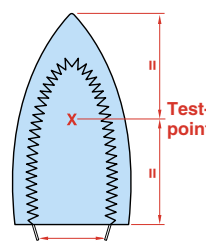
- After the product has been repaired, it should function properly and has to meet the safety requirements & legal regulations as laid down & officially established at this moment.
- The following tests are common checks that are conducted on a repaired product before it is returned to the consumer.

1. Soleplate temperature

Check that soleplate temperature is within IEC requirement.

Measure the temperature of the soleplate after the iron has reached steady state i.e connected to the mains for at least 15 minutes. The table below shows the temperature requirement.

Marking	Soleplate temperature (Deg C)			Material, for example
	Minimum	Maximum	Nominal + Tolerance	
• (1 dot)	70	120	95 ± 25	Acetate, elastane, polyamide, polypropylene
•• (2 dots)	100	160	130 ± 30	Cupro, polyester, silk, triacetate, viscose, wool
••• (3 dots)	140	210	175 ± 35	Cotton, linen



2. Leakage current

Check that leakage current is within IEC requirement.

Measure leakage current between LIVE/NEUTRAL & EARTH.

IEC requirement is that at 230 V supply, the EARTH leakage current must be less than 0.75 mA.

3. Water leakage / Functionality

Check that there is no water leakage from any part of the product during operation.

Check that the functionality of the product (product dependent) eg. steaming, variable steam, SOS, ASO etc is working properly.

4. Loose part

Check that there are no loose parts eg. extra screw in the product that can cause short-circuit or product malfunction.