

Service
Service
Service



Philips Consumer Lifestyle

ServiceManual

PRODUCT INFORMATION

Iron

- Dark Blue color
- Blue Ceralon soleplate
- Steam rate (max): 110g / min
- Steam trigger with lock
- Steam tip
- Steam hose length: 1.7 m

Stand

- Pump pressure up to 4.0 bar
- Boiler volume max.: 800 ml
- Steam ready in: 6 minutes
- Hose cord storage compartment
- Hose cord length: 1.7m
- Power cord length: 1.8 m
- Power on light
- Overheat safety stop (Thermal fuse)

EMF & Service Information

- This product meets the requirements regarding interference suppression on radio & TV.
- After the product has been repaired, it should function properly & has to meet the safety requirements as officially laid down at this moment.

TECHNICAL INFORMATION

Voltage	: 230 V
Frequency	: 50 - 60 Hz
Power	: 1980 - 2350 W

Product Dimension : 31.9 X 19.9 X 16.6 cm

Weight of iron : 12Kg

Weight of iron + Base : 4 Kg

Water advice

If the tap water in your area is very hard, it is advisable to mix the tap water with an equal amount of demineralised water

REPAIR INSTRUCTION

- No specific issues

OPTIONAL (ACCESSORIES)

- No specific issues

BACKPLATE 1

HOSE CORD MOUNTED ASSY 2

- Remove Screw A
- Disassemble BACKPLATE 1
- Remove Screw B1, B2
- Remove Clamping plate
- Remove Power cord quick-connect S, E, L, N
- Remove Hose clip (a)
- Disassemble Steam hose
- Disassemble HOSE CORD MOUNTED ASSY 2

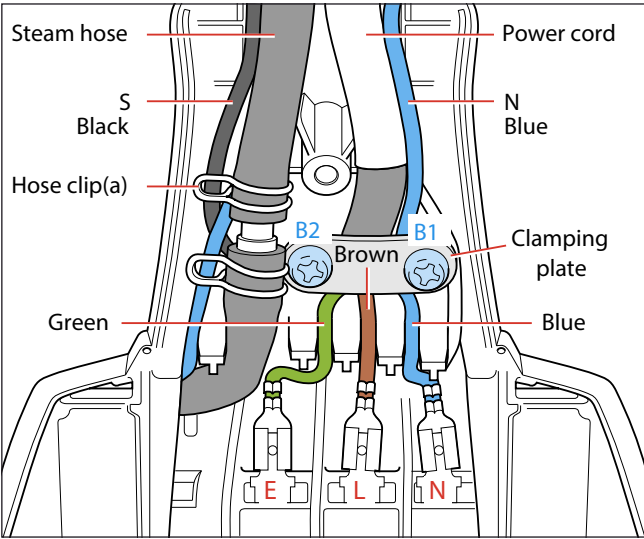


Fig 1. Wiring at rear HOUSING (Part 1)

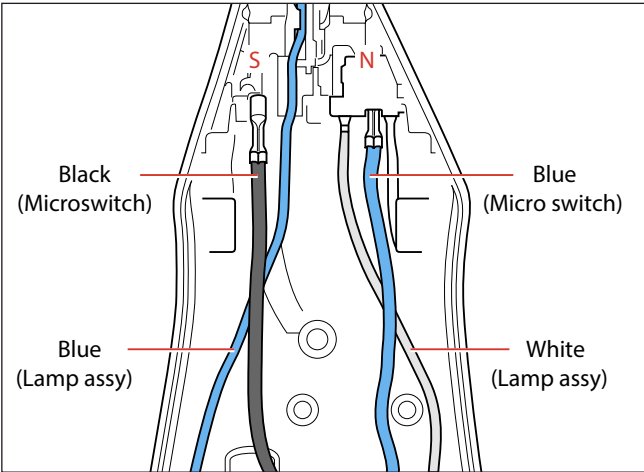


Fig 2. Wiring at rear HOUSING (Part 2)

INLAY 3

STEAM LOCK 4

LAMP ASSY 5

MICROSWITCH ASSY 6

TRIGGER 7

THERMOSTAT DIAL ASSY 9

HOUSING PRINTED 10

SOLEPLATE COVER 11

SOLEPLATE COVER 11

THERMOSTAT BUSH 13

BRAIDED RUBBER HOSE 14

SOLEPLATE ASSY 16

- Remove Screw A
- Disassemble BACKPLATE 1
- Release Inlay rear catch
- Disassemble INLAY 3
- Disassemble STEAM LOCK 4
- Disassemble MICROSWITCH ASSY 6
- Remove Screw C
- Disassemble TRIGGER 7
- Disassemble THERMOSTAT DIAL 9

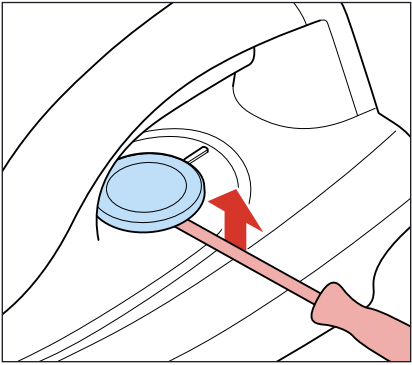
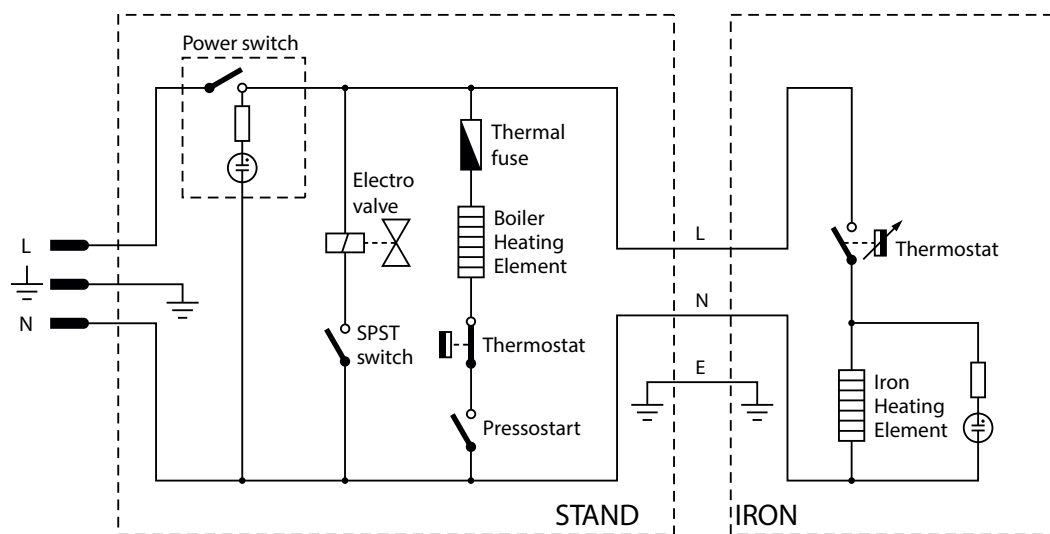
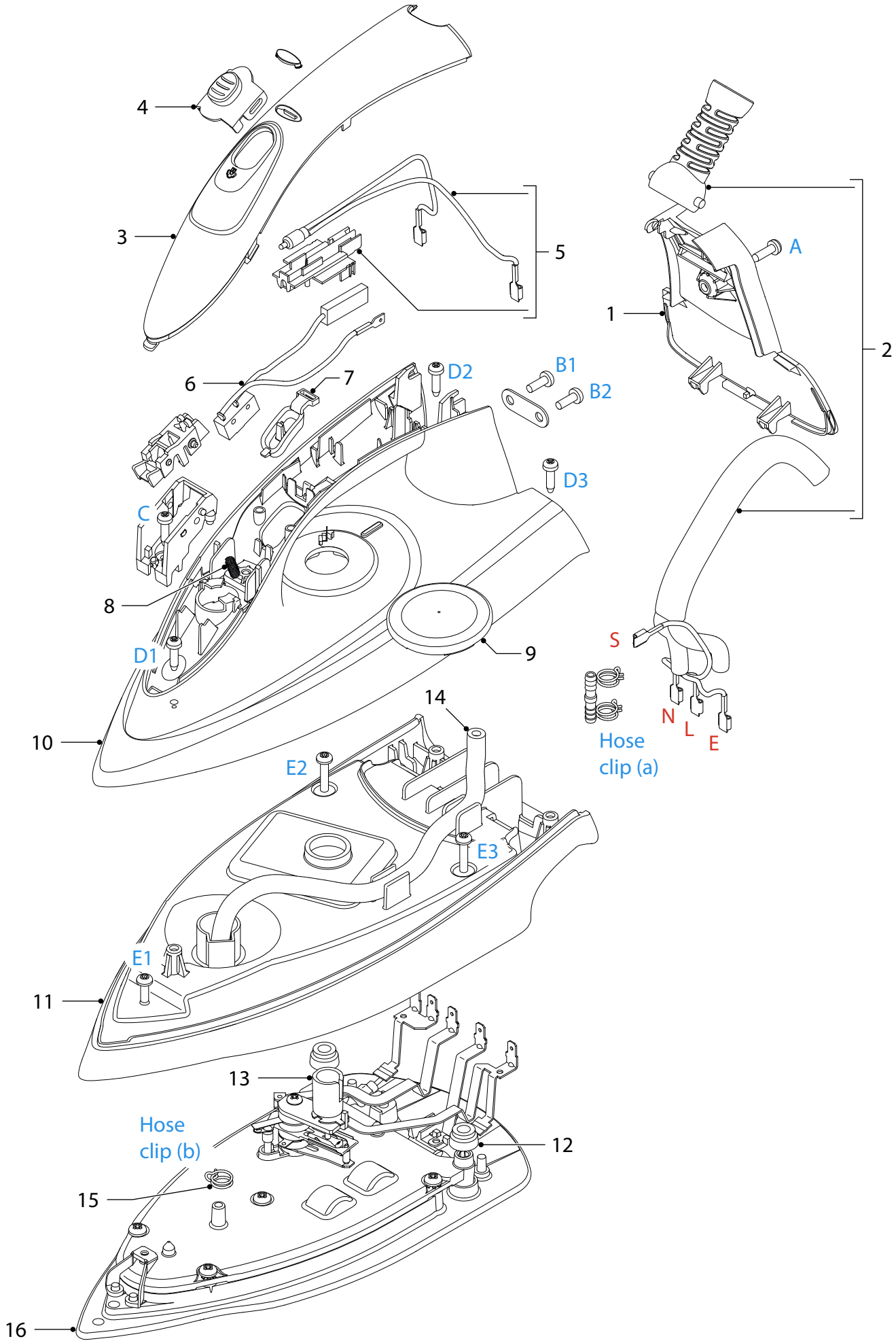


Fig 3.

- Remove Screws D1,D2,D3
- Disassemble HOUSING PRINTED 10
- Remove Screws E1,E2,E3
- Disassemble SOLEPLATE COVER 11
- Remove Hose clip (b)
- Disassemble RUBBER HOSE 14

Pos	Service code	Description
1	4239 026 41761	Backplate
2	4239 021 61235	Hose cord mtd assy Koon Blue #
3	4239 026 41981	Inlay
4	4239 026 41891	Steam lock
5	4239 021 36861	Lamp mounted assy
6	4239 021 76601	Microswitch assy
7	4239 026 41931	Trigger
8	4239 010 09293	Trigger spring
9	4239 021 61241	Thermostat dial Prted #
10	4239 021 77052	Housing printed
11	4239 026 41811	Soleplate cover
12	4239 015 70153	Ryton ring
13	4239 026 13222	Thermostat bush
14	4239 015 59301	Braided rubber hose
15	4239 010 10281	Hose clip - braided rubber hose
16	4239 022 63621	S/P Mtd Assy - Service Welligton





SAFETY VALVE ASSY 40
STAND BASE ASSY 30
HOSE-CORD STORAGE COMPARTMENT 32
POWER CORD 54
CONNECTION BOX 38, 39
BOILER ASSY 53
ELECTROVALVE 56
STAND TOP ASSY 35
ROCKER SWITCH 47

Remove SAFETY VALVE ASSY 40

Note:

Empty water in boiler

Turn Stand assy upside down

Remove Screws G1 – G5

Disassemble STAND BASE ASSY 30

Remove Screws H1 – H3

Disassemble HOSE-CORD STORAGE
COMPARTMENT 32

Remove Screws J1 – J3

Disassemble Cord clamp

Disassemble POWER CORD 54

Disassemble CONNECTION BOX 38, 39

Disassemble BOILER ASSY 53

Remove Screws K1 – K6

Disassemble STAND TOP ASSY 35

Remove Screws N1, N2

Disassemble ROCKER SWITCH BRACKET 46

Disassemble ROCKER SWITCH 47

Pos	Service code	Description
30	4239 021 61272	Stand base assy #
32	4239 026 41492	Hose-cord storage #
35	4239 021 61253	Stand top assy - Koon Blue #
38	4239 026 41431	Connector box cover
39	4239 026 41421	Connector box base
40	4239 021 61261	Safety valve assy
46	4239 026 41611	Rocker switch bracket
47	2422 128 03178	SWI PUSH 1P 2POS 250VAC 10A BU CRD 1115 B
53	4239 021 60983	Boiler Assy - Wellington
54	2422 070 98463	Mainscord IEC 16A 2M6 Fast 3P WHB
55	4239 010 11111	Electrovalve mesh
56	2922 021 99017	Valve Solenoid NC 230VAC 50 HZ B

