

Service  
Service  
Service



Philips Consumer Lifestyle

# Service Manual

## PRODUCT INFORMATION

### Iron

- Lavender color
- SteamGlide soleplate
- Steam rate (max): 110 g/min
- Steam trigger with lock
- Steam tip
- Steam hose length: 1.7 m
- Shot Of Steam: 150 g/min

### Stand

- Inox boiler pressure max. 4.0 bar
- Boiler volume max. 800 ml
- Steam ready in 6 minutes
- Hose cord storage compartment
- Hose cord length 1.7 m
- Power cord length 1.9 m
- Overheat safety stop (Thermal fuse)
- Carry-lock
- Variable steam
- ECO setting
- Water empty indicator
- Steam ready indicator

### EMF & Service Information

- This product meets the requirements regarding interference suppression on radio & TV.
- After the product has been repaired, it should function properly & has to meet the safety requirements as officially laid down at this moment.

## TECHNICAL INFORMATION

Voltage	: 230 V
Frequency	: 50 - 60 Hz
Power	- Iron : 800 W
	- Boiler : 1370 W
Dimension (F-box)	: 39 cm (D) x 25 cm (W) x 37 cm (H)
Weight Product)	: 4.7 kg

### Water advice

If the tap water in your area is very hard, it is advisable to mix the tap water with an equal amount of demineralised water.

### Carry-lock

For safe storage, the iron can be locked to the stand tray via a slider knob at the rear.

### Variable steam control

There are 3 steam settings controlled mechanically via a steam knob: Low, Medium, High.

## REPAIR INSTRUCTION

- No specific issues

## OPTIONAL (ACCESSORIES)

- No specific issues



BACKPLATE 1

HOSE CORD MOUNTED ASSY 2

- Remove Screw A
- Disassemble BACKPLATE 1
- Remove Screw B1, B2
- Remove Clamping plate
- Remove Power cord quick-connect S, E, L, N
- Remove Hose clip (a)
- Disassemble Steam hose
- Disassemble HOSE CORD MOUNTED ASSY 2

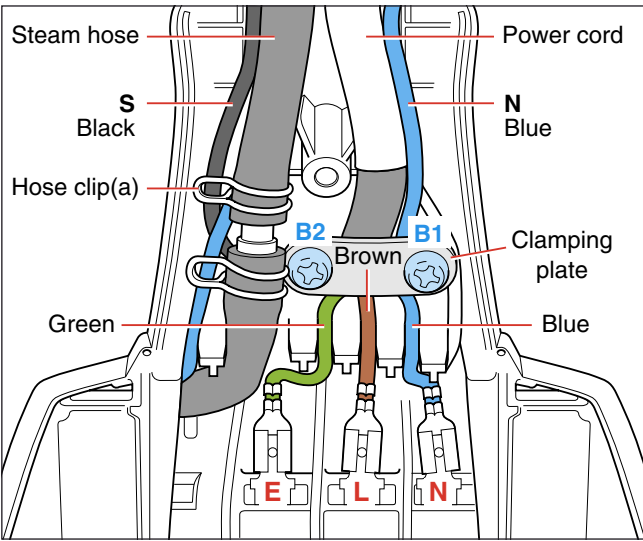


Fig 1. Wiring at rear HOUSING (Part 1)

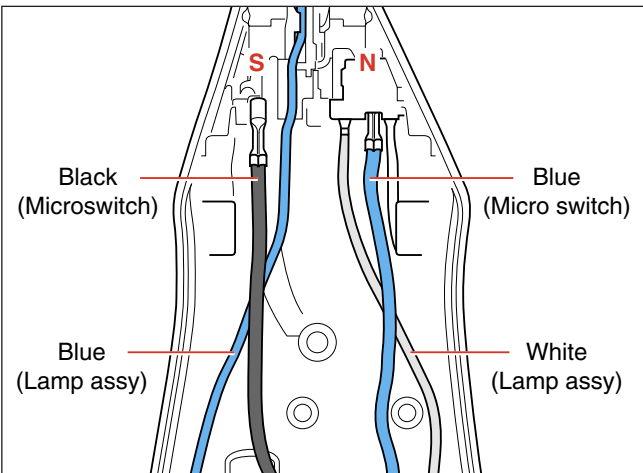


Fig 2. Wiring at rear HOUSING (Part 2)

INLAY 3

STEAM LOCK 4

LAMP ASSY 5

MICROSWITCH ASSY 6

TRIGGER 7

THERMOSTAT DIAL ASSY 9

HOUSING PRINTED 10

SOLEPLATE COVER 11

THERMOSTAT BUSH 13

BRAIDED RUBBER HOSE 14

SOLEPLATE ASSY 16

- Remove Screw A
- Disassemble BACKPLATE 1
- Release Inlay rear catch
- Disassemble INLAY 3
- Disassemble STEAM LOCK 4
- Disassemble MICROSWITCH ASSY 6
- Remove Screw C
- Disassemble TRIGGER 7
- Disassemble THERMOSTAT DIAL 9

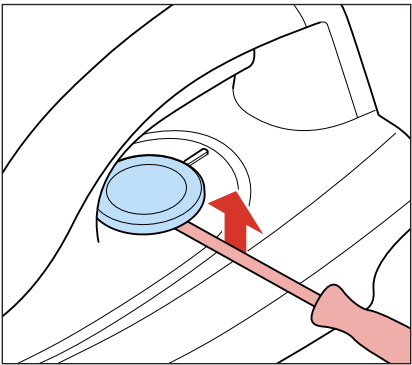
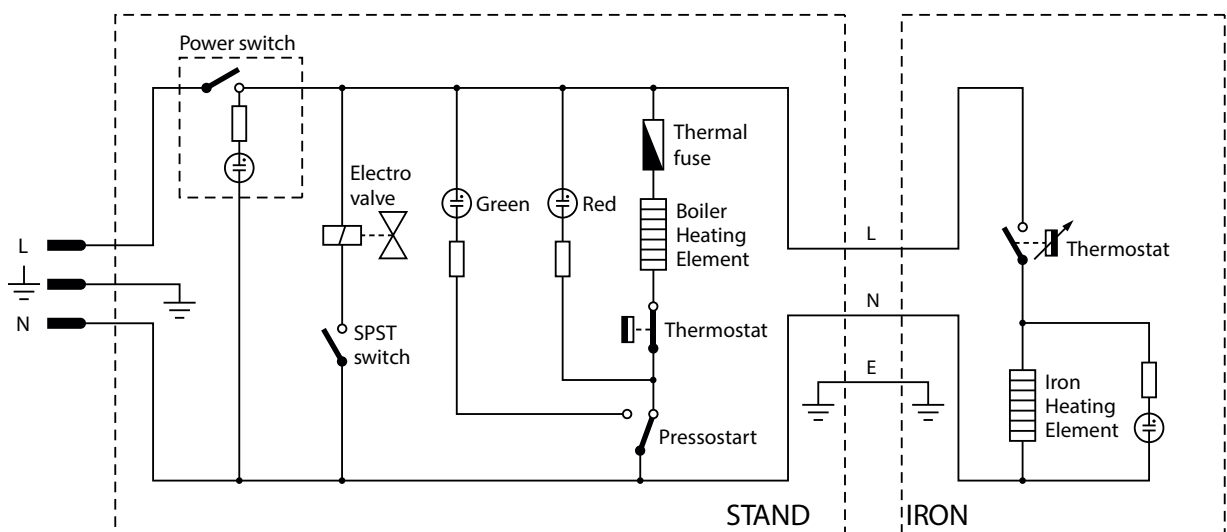


Fig 3.

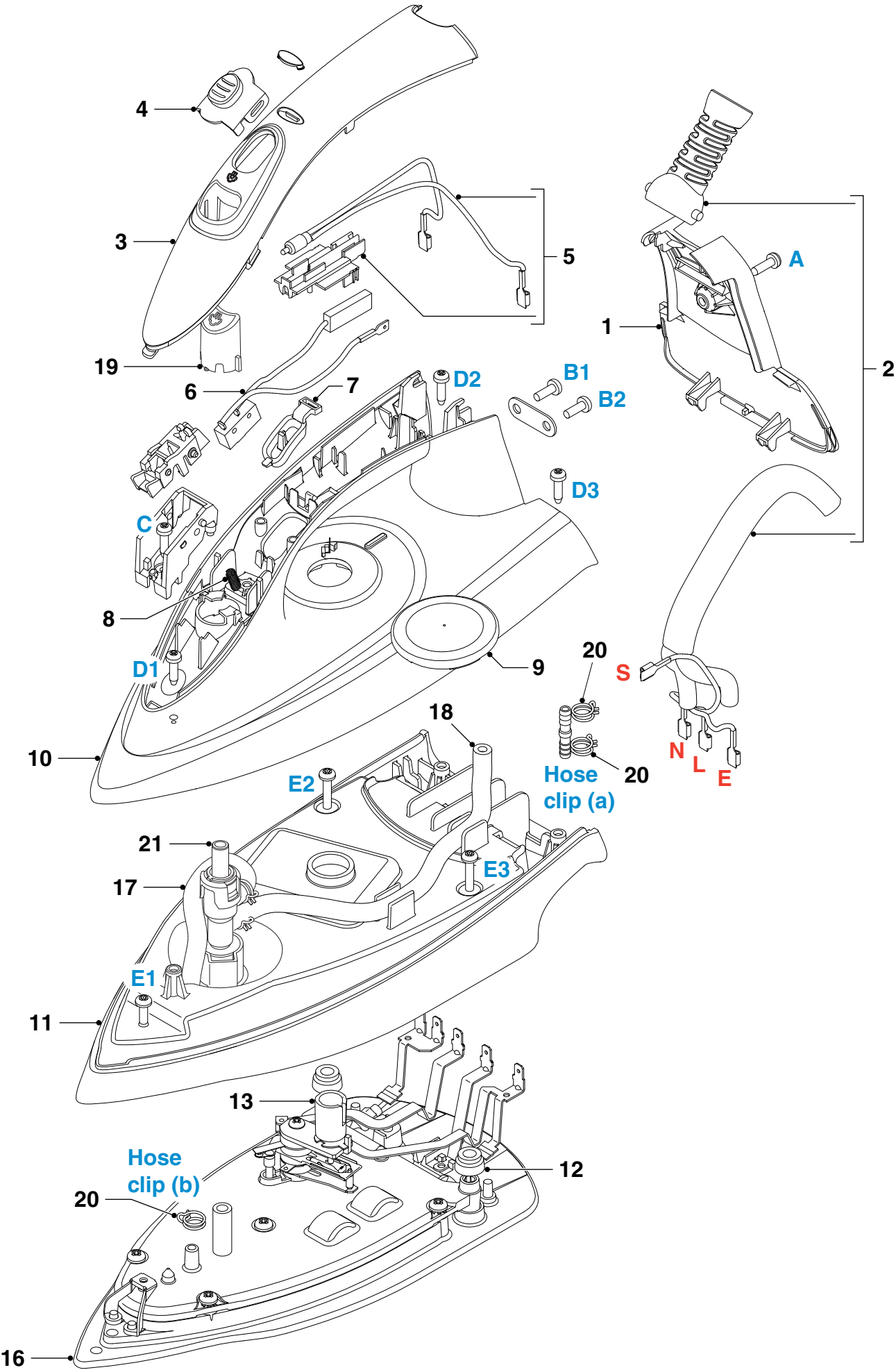
- Remove Screws D1,D2,D3
- Disassemble HOUSING PRINTED 10
- Remove Screws E1,E2,E3
- Disassemble SOLEPLATE COVER 11
- Remove Hose clip (b)
- Disassemble RUBBER HOSE 14



Pos	Service code	Description
1	4239 026 41791	Backplate
2	4239 021 60702	Hose cord mounted assy
3	4239 026 41801	Inlay SOS
4	4239 026 41921	Steam lock
5	4239 021 36861	Lamp mounted assy
6	4239 021 31790	Microswitch assy
7	4239 026 41951	Trigger
8	4239 010 09290	Trigger spring
9	4239 021 60721	Thermostat dial assy
10	4239 021 60641	Housing printed
11	4239 026 41841	Soleplate cover
12	4239 015 70153	Ryton ring
13	4239 026 13220	Thermostat bush
16	4239 021 81031	Soleplate assy (Steamglide-SOS) - 230 V
17	4239 015 56120	Rubber hose (SOS)
18	4239 015 56510	Rubber hose (dosing)
19	4239 026 41971	SOS knob
20	4239 010 10110	Hose clip
21	4239 021 31780	Steam deviator assy









## SAFETY VALVE ASSY 40

## STAND BASE ASSY 30

HOSE-CORD STORAGE  
COMPARTMENT 32

## POWER CORD 54

## CONNECTION BOX 38, 39

## BOILER ASSY 53

## ELECTROVALVE 56

## STAND TOP ASSY 35

## ROCKER SWITCH 47

## STEAM CONTROL KNOB 50

## STEAM REGULATOR ASSY 51

Remove SAFETY VALVE ASSY 40

**Note:**

*Empty water in boiler*

Turn Stand assy upside down

Remove Screws G1 – G5

Disassemble STAND BASE ASSY 30

Remove Screws H1 – H3

Disassemble HOSE-CORD STORAGE  
COMPARTMENT 32

Remove Screws J1 – J3

Disassemble Cord clamp

Disassemble POWER CORD 54

Disassemble CONNECTION BOX 38, 39

Disassemble BOILER ASSY 53

Remove Screws K1 – K6

Disassemble STAND TOP ASSY 35

Remove Screws N1, N2

Disassemble ROCKER SWITCH BRACKET 46

Disassemble ROCKER SWITCH 47

Disassemble STEAM CONTROL KNOB 50

Remove Screws P1 – P3

Disassemble STEAM REGULATOR ASSY 51

Pos	Service code	Description
30	4239 021 60801	Stand base assy
32	4239 026 41491	Hose-cord storage compartment
35	4239 021 60761	Stand top assy
38	4239 026 41431	Connector box cover
39	4239 026 41421	Connector box base
40	4239 021 60831	Safety valve assy
41	4239 015 58201	O-ring
46	4239 026 41611	Rocker switch bracket
47	4239 017 12041	Rocker switch
48	4239 015 59081	Braided hose
49	4239 010 10610	Hose clip
50	4239 026 41712	Steam control knob
51	4239 021 60791	Steam regulator assy
53	4239 021 65141	Boiler mounted assy
54	4239 000 11321	Power cord - EU
	4239 000 11401	Power cord - Thailand
55	4239 010 11111	Electrovalve mesh
56	4239 017 11101	Electrovalve



