

Service
Service
Service



Philips Consumer Lifestyle

Service Manual

Product information

Fast & powerful crease removal

- Soleplate: Non-stick
- Vertical steam
- Steam Pressure: Max 4.3 bar
- Power: 2400 W
- Continuous Steam up to: 95 g/min

Easy to use

- Water tank capacity: 1200 ml
- Filling and emptying water: Extra large filling hole
- Refill any time
- Heat-up time: 2 min
- Hose storage: Hose storage compartment
- Cord freedom (swivel): 180 degree cord freedom
- Hose length: 1.6 m
- Power cord length: 1.8 m

Calc management

- Suitable for tap water
- Calc clean solution: Smart Calc Clean
- Calc clean reminder
- Filtered water recommended

Safety Information

- This product meets the requirements regarding interference suppression on radio and TV.
- After the product has been repaired, it should function properly and has to meet the safety requirements and legal regulations as officially laid down at this moment.

Technical information

- Weight of iron : 1.1 kg
- Weight of iron + base : 2.6 kg
- Product dimensions : 19.8 x 21.7 x 34.6 cm
- Packaging dimensions : 26.4 x 30.3 x 40.4 cm
- Voltage : 220 - 240 V
- Frequency : 50 - 60 Hz
- Power : 2400 W

BUTTON 23
TOP COVER 17
CORD BUSHING 15
CONTROL & POWER PCBA 1, 18
STEAM KNOB 2
DIAL KNOB 16
CORD CLAMP 19
HOUSING 3
POTENTIOMETER BOX 14
STEAM TUBE CONNECTOR 6

- Remove **Screw A1, A2**
- Remove **BUTTON 23**
- Remove **Screw B1**
- Remove **TOP COVER 17**
- Remove **Screw C1**
- Remove **CORD BUSHING 15**
- Remove **CONTROL & POWER PCBA 1,18**

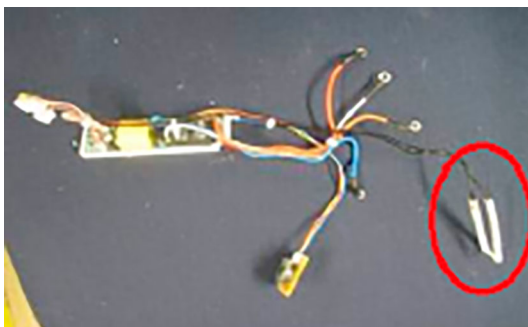


Fig 1: Thermistor is part of the Power PBCA Asm

- Remove **STEAM KNOB 2**
- Remove **Screw D1**
- Remove **DIAL KNOB 16**
- Remove **Screw E1, E2**
- Remove **CORD CLAMP 19**
- Remove **HOUSING 3**
- Remove **Screw F1, F2**
- Remove **POTENTIOMETER BOX 14**
- Remove **Screw G1, G2, G3**
- Remove **STEAM TUBE CONNECTOR 6**

WIRE CONNECTOR 28
CONNECTION WIRE ASM 24
BASE 29
SOLEPLATE ASSY 8

- Remove **Screw A1, A2**
- Remove **BUTTON 23**
- Remove **Screw B1**
- Remove **TOP COVER 17**
- Remove **Screw C1**
- Remove **CORD BUSHING 15**
- Remove **CONTROL & POWER PCBA 1,18**
- Remove **STEAM KNOB 2**
- Remove **Screw D1**
- Remove **DIAL KNOB 16**
- Remove **Screw E1, E2**
- Remove **CORD CLAMP 19**
- Remove **HOUSING 3**
- Remove **Screw F1, F2**
- Remove **POTENTIOMETER BOX 14**
- Remove **Screw G1, G2, G3**
- Remove **STEAM TUBE CONNECTOR 6**
- Remove **Screw H1, H2, H3, H4**
- Remove **WIRE CONNECTOR 28**
- Remove **CONNECTION WIRE ASM 24**
- Remove **BASE 29**
- Remove **SOLEPLATE ASSY 8**

SCREW CAP 57
SILICON CUSHION 56
INSULATION BASE 55
UNIT BASE COVER 51
BOTTOM FOOT 40
WATER TANK ASM 36
UNIT BASE BODY 43

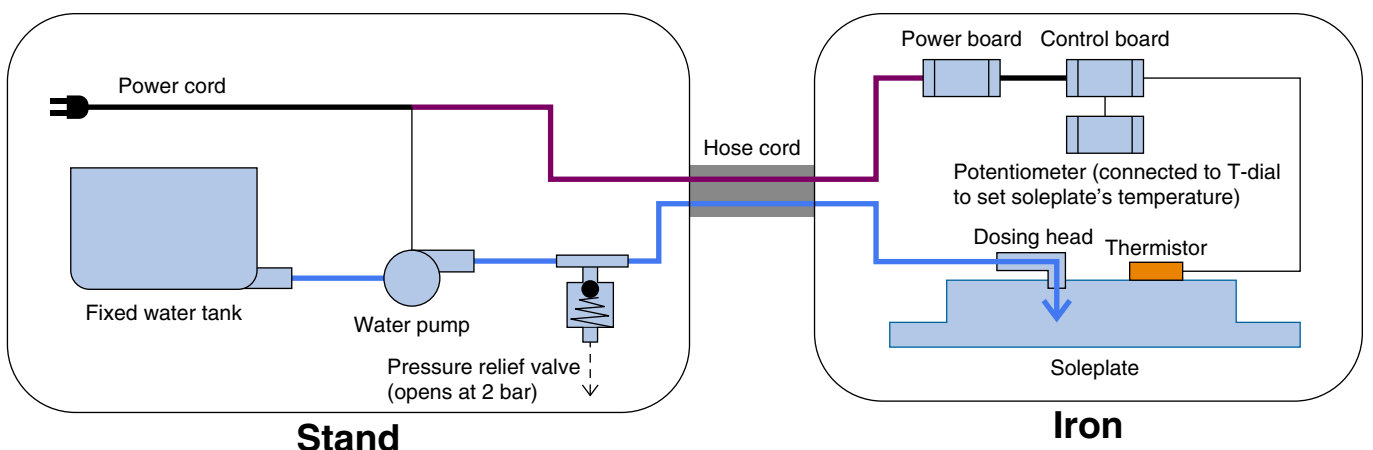
- Remove **SCREW CAP 57**
- Remove **Screws A1, A2**
- Remove **SILICON CUSHION 56**
- Remove **INSULATION BASE 55**
- Remove **Screws C1, C2, C3, C4, C5, C6, C7**
- Remove **UNIT BASE COVER 51**
- Remove **BOTTOM FOOT 40**
- Remove **Screws D1, D2, D3, D4, D5, D6, D7**
- Remove **WATER TANK ASM 36**
- Remove **UNIT BASE BODY 43**

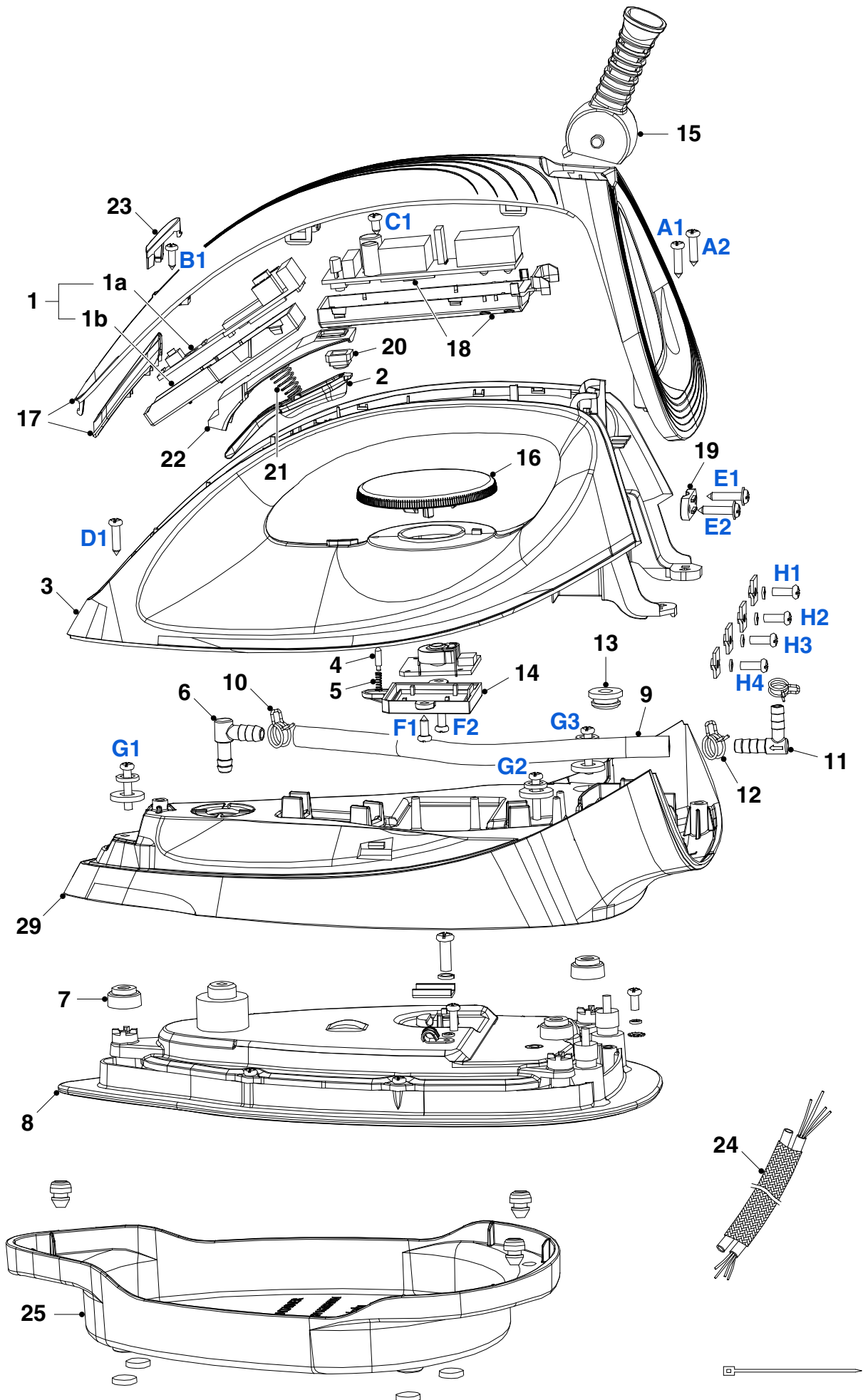
PUMP BRACKET 41, 44
PUMP ASSY 42
CORD CLAMP 45
CORD BOX COVER 50
TERMINAL BLOCK 46
SWITCH ASM 47
POWER CORD ASM 52

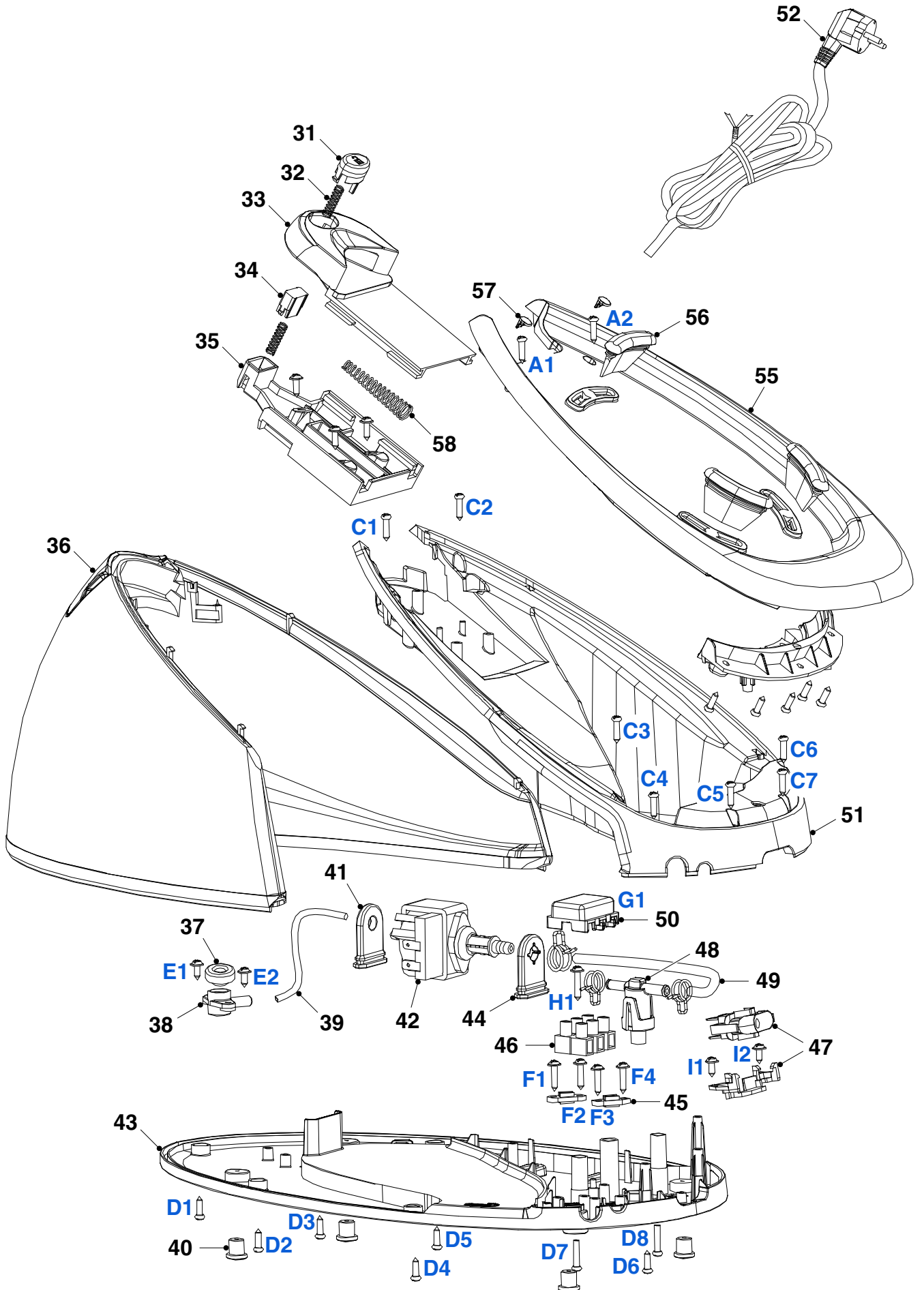
- Remove **SCREW CAP 57**
- Remove **Screws A1, A2**
- Remove **SILICON CUSHION 56**
- Remove **INSULATION BASE 55**
- Remove **Screws C1, C2, C3, C4, C5, C6, C7**
- Remove **UNIT BASE COVER 51**
- Remove **BOTTOM FOOT 40**
- Remove **Screws D1, D2, D3, D4, D5, D6, D7**
- Remove **WATER TANK ASM 36**
- Remove **UNIT BASE BODY 43**
- Remove **Screw E1, E2**
- Remove **PUMP BRACKETS 41, 44**
- Remove **PUMP ASSY 42**
- Remove **Screw F1, F2, F3, F4**
- Remove **CORD CLAMP 45**
- Remove **Screw G1**
- Remove **CORD BOX COVER 50**
- Remove **Screw H1**
- Remove **TERMINAL BLOCK 46**
- Remove **Screw I1, I2**
- Remove **SWITCH ASM 47**
- Remove **POWER CORD ASM 52**

Pos	Service code	Description
1	9965 100 73706	Control PCB Box
1a	9965 100 73699	Control PCB Assy
1b	9965 100 70251	Control PCB Box
2	9965 100 73681	Steam Knob
3	9965 100 73687	Housing
4	9965 100 70238	Knob Cylinder
5	9965 100 70215	Knob Spring
6	9965 100 70223	Steam Tube Connector
7	9965 100 70202	Thermal Insulation Pad
8	9965 100 73682	Soleplate ASM
9	9965 100 70198	Silicon Fiber Tube
10	9965 100 70224	Threat Clamp
11	9965 100 70246	Bend Connector
12	9965 100 70203	Throat Clip
13	9965 100 70237	Seal Ring 1
14	9965 100 70227	Potentiometer Box
15	9965 100 73693	Cord Bushing
16	9965 100 73683	Dial Knob
17	9965 100 73701	Top Cover + Lamp Cover
18	9965 100 73686	Power PCB ASM + Power PCB
19	9965 100 70247	Cord Clamp
20	9965 100 70225	Silicon Pad
21	9965 100 70239	Spring 4
22	9965 100 70194	Switch Hole Cover
23	9965 100 73684	Button
24	9965 100 73711	Connection Wire ASM
25	9965 100 70231	Iron Base Support
26	9965 100 73698	Bracket
27	9965 100 73707	Fuse Clamp
28	9965 100 70228	Wire Connector
29	9965 100 70218	Base
30	N/A	

Pos	Service code	Description
31	N/A	
32	N/A	
33	N/A	
34	9965 100 73712	Spring 3
35	N/A	
36	9965 100 73704	Water Tank ASM
37	9965 100 73685	Seal Ring
38	9965 100 70243	Water Tube Connector
39	9965 100 73705	Silicon Tube
40	9965 100 70206	Bottom Foot
41	9965 100 70216	2 Pump Bracket 2
42	9965 100 73694	Pump (JYPC-4)
43	9965 100 73689	Unit Base Body
44	9965 100 70248	1 Pump Bracket 2
45	9965 100 70205	Cord Clamp
46	9965 100 73696	Terminal Block
47	9965 100 73702	Switch ASM
48	9965 100 73695	Safety Valve ASM
49	9965 100 70219	Silicon Tube
50	9965 100 70213	Cord Box Cover
51	9965 100 73697	Unit Base Cover
52	9965 100 73703	Power Cord ASM
53	N/A	
54	N/A	
55	9965 100 73709	Insulation Base
56	9965 100 73691	Silicon Cushion 1
57	9965 100 73708	Screw Cap
58	9965 100 73692	Water Inlet Cover
59	9965 100 73688	Calc Clean Container+Sticker







- Due to the high wattage of the iron, only the specified cord set must be used.
- Should damage be observed on the **POWER CORD ASM 52**, it must be replaced.
- Continued usage is not allowed.
- If **UNIT BASE BODY 43** is provided without type plate information eg. Type number, voltage etc. When replacing the cover, engrave the type number & voltage on the type plate with a sharp object.
- After the product has been repaired, it should function properly and has to meet the safety requirements & legal regulation as laid down & officially established at this moment.
- The following tests are common checks that are conducted on a repaired product before it is returned to the consumer.

1. Soleplate temperature

Check the soleplate temperature is within IEC requirement.

Soleplate temperature (Deg C)		Materials, for example	
Minimum	Maximum		
170	230	All fabric types	

2. Leakage current

Check that leakage current is within IEC requirement.

Measure leakage current between LIVE/NEUTRAL & EARTH.

IEC requirement is that at 230 V supply, the EARTH leakage current must be less than 0.75 mA.

3. Water leakage / Functionality

Check that there is no water leakage from any part of product during operation.

Check that the functionality of the product (product dependent) eg. Steaming, steam trigger, variable steam, SOS, PCBA etc is working properly.

4. Loose part

Check that there are no loose parts eg. Extra screws in the product that can cause short-circuit or product malfunctions.

5. Fuse open circuit

When replacing fuse, to also service the water tubes which is probably choked with calc.

6. PCBAs ESD control

All failed PCBAs including to be packed with ESD bags for shipment.

7. Screws

Screws should be the defined screws in terms of length and material used.

The torque of the thermistor-soleplate screw is 9-12 kg f.cm.