



Philips Consumer Lifestyle

# Service Manual

## PRODUCT INFORMATION

### Features

#### Fast & powerful crease removal

- Soleplate: SteamGlide
- Continuous steam output
- Continuous steam output: 120 g/min
- Vertical steam
- Steam pressure: Up to 5 Bar
- Variable steam settings
- Steam tip
- Power: 2400 W

#### Easy to use

- Water tank capacity: 1000 ml
- Filling and emptying water: Extra large filling hole
- Refill any time
- Heat-up time: 2 min
- Hose storage: Hose clip
- Power cord length: 1.8 m
- Cord freedom (swivel): 180 degree cord freedom
- Hose length: 1.7 m

#### Sustainability

- ECO setting: 30% energy reduction

#### Calc management

- Suitable for tap water
- Calc clean solution: Anti-calc tablets + rinsing

#### Safety Information

- This product meets the requirements regarding interference suppression on radio and TV.
- After the product has been repaired, it should function properly and has to meet the safety requirements as officially laid down at this moment.

## TECHNICAL INFORMATION

|                       |        |                     |
|-----------------------|--------|---------------------|
| Voltage               | :      | 220 - 240 V         |
| Frequency             | :      | 50 - 60 Hz          |
| Power                 | Iron   | : 800 W             |
|                       | Boiler | : 1370 W            |
| Product dimension     | :      | 42.9 x 40 x 20.6 cm |
| Weight of iron        | :      | 1.2 kg              |
| Weight of iron + base | :      | 4.5 kg              |

### Water advice

If the tap water in your area is very hard, it is advisable to mix the tap water with an equal amount of demineralised water.

### SteamGlide Soleplate

SteamGlide soleplate is the best Philips soleplate. It has great scratch resistancy, glides excellent and is easy to clean.

### Separate Water Tank

The separate watertank allows you to re-fill the watertank any time, even during ironing, without waiting.

### ECO Setting

Save 30% energy and 40% water consumption by selecting the ECO-setting. The ECO-setting offers the most energy efficient way to obtain perfect ironing results.

### Anti-calc Tablets

Permanent anti-calc tablets delay the formation of scale build up ensuring better protection for your system iron.

BACKPLATE 18

HOSE CORD ASSY 19

- Remove Screw A
- Disassemble BACKPLATE 18
- Remove Screw B1, B2
- Remove Clamping plate
- Remove Power cord quick-connect S, E, L, N
- Disassemble Steam hose
- Disassemble HOSE CORD ASSY 19

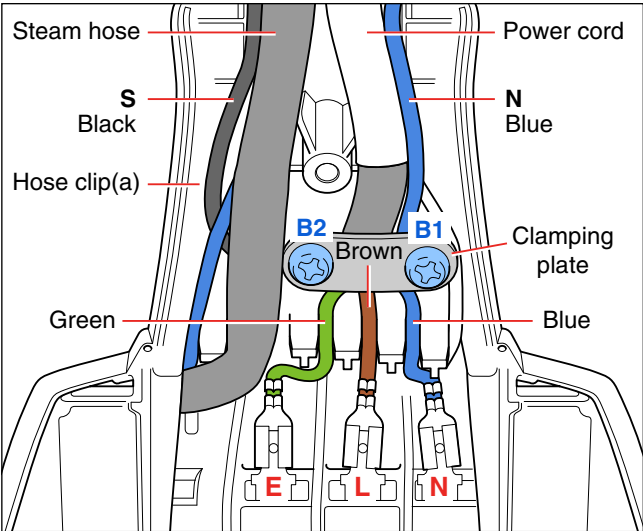


Fig 1. Wiring at rear HOUSING (Part 1)

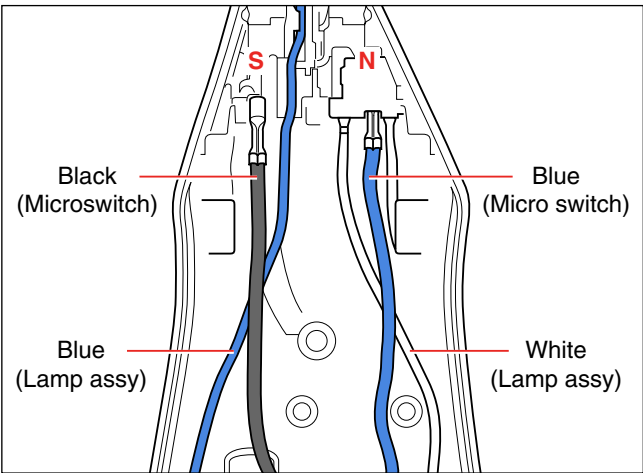


Fig 2. Wiring at rear HOUSING (Part 2)

INLAY 17

STEAM LOCK 13

LAMP ASSY 8

MICROSWITCH ASSY 11

TRIGGER 12

THERMOSTAT DIAL ASSY 15

HOUSING PRINTED 10

SOLEPLATE COVER 6

THERMOSTAT BUSH 9

BRAIDED RUBBER HOSE 3

SOLEPLATE ASSY 1

- Remove Screw A
- Disassemble BACKPLATE 18
- Release Inlay rear catch
- Disassemble INLAY 17
- Disassemble STEAM LOCK 13
- Disassemble MICROSWITCH ASSY 11
- Remove Screw C
- Disassemble TRIGGER 12
- Disassemble THERMOSTAT DIAL 15

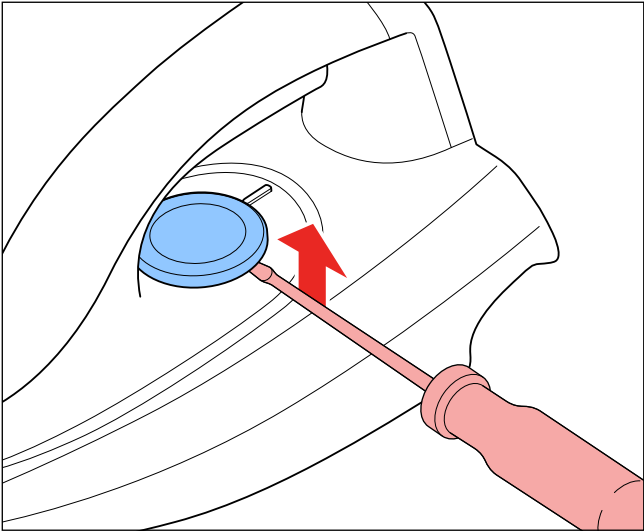


Fig 3.

- Remove Screws D1, D2, D3
- Disassemble HOUSING PRINTED 10
- Remove HOSE CLIP 4
- Disassemble BRAIDED RUBBER HOSE 3
- Remove Screws E1, E2, E3
- Disassemble SOLEPLATE COVER 6

| Pos | Service code   | Description                   | Remark             |
|-----|----------------|-------------------------------|--------------------|
| 1   | 4239 021 68981 | Soleplate assy 230V           | Steamglide-Non SOS |
| 3   | 4239 015 59301 | Braided rubber hose           |                    |
| 4   | 4239 010 10281 | Hose clip-braided rubber hose |                    |
| 5   | 4239 015 70153 | Ryton ring                    |                    |
| 6   | 4239 026 48361 | Soleplate cover               | Purple             |
| 8   | 4239 021 36861 | Lamp mounted assy             |                    |
| 9   | 4239 026 13222 | Thermostat bush               |                    |
| 10  | 4239 021 68841 | Housing printed               |                    |
| 11  | 4239 021 31793 | Microswitch assy              |                    |
| 12  | 4239 026 48371 | Trigger                       | Fuchsia            |
| 13  | 4239 026 48561 | Steam lock                    | Fuchsia            |
| 14  | 4239 010 09293 | Trigger spring                |                    |
| 15  | 4239 021 68851 | Thermostat dial assy          | Purple             |
| 17  | 4239 026 48391 | Inlay                         | Purple             |
| 18  | 4239 026 48401 | Backplate                     | Purple             |
| 19  | 4239 021 68871 | Hose cord mounted assy        |                    |

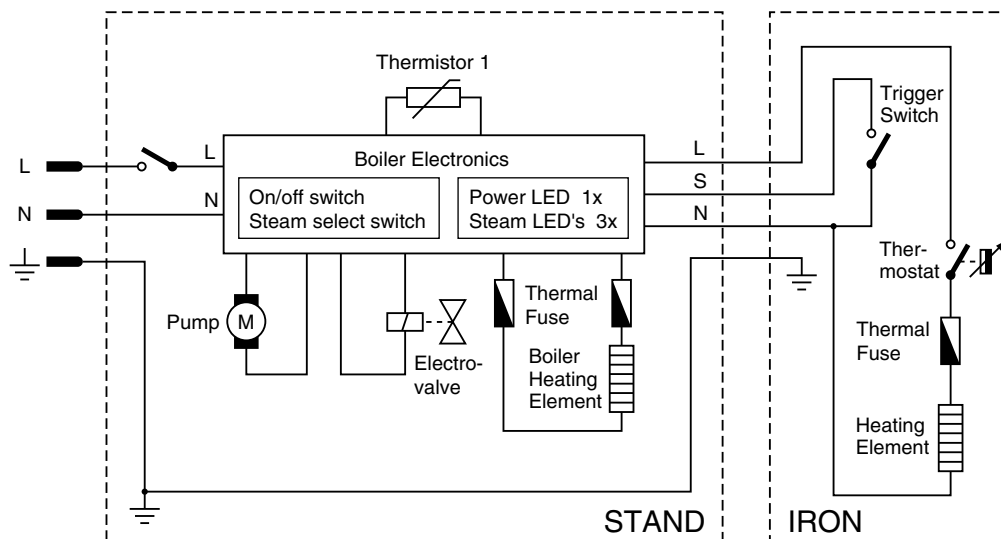
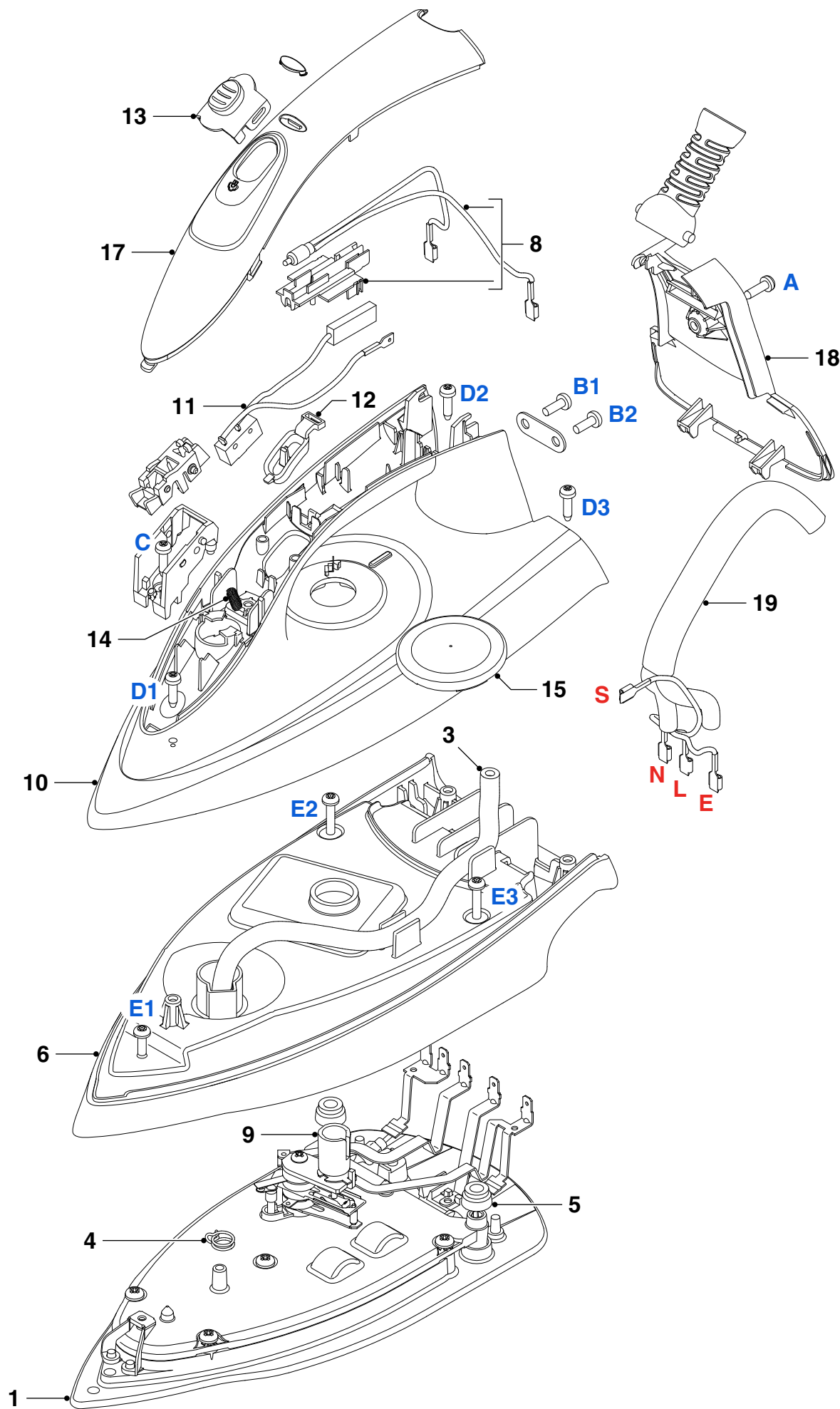


Fig 4. Electrical diagram



## TRAY RUBBER CAP 30

## TRAY ASSY 33

## DOOR ASSY

|             |                                |
|-------------|--------------------------------|
| Remove      | <b>TRAY RUBBER CAP 30 (3x)</b> |
| Remove      | <b>Screw F1, F2, F3</b>        |
| Disassemble | <b>TRAY ASSY 33</b>            |
| Remove      | <b>Screw G</b>                 |
| Disassemble | <b>DOOR ASSY</b>               |

## FRONT PANEL PRINTED 37

## POWER BOARD 43

## CONTROL BOARD

|             |                                |
|-------------|--------------------------------|
| Remove      | <b>TRAY RUBBER CAP 30 (3x)</b> |
| Remove      | <b>Screw F1, F2, F3</b>        |
| Disassemble | <b>TRAY ASSY 33</b>            |
| Remove      | <b>Screw H1, H2</b>            |
| Disassemble | <b>FRONT PANEL 37</b>          |
| Remove      | <b>Screw J1, J2</b>            |
| Disassemble | <b>PCB BRACKET</b>             |
| Disassemble | <b>CONTROL BOARD</b>           |
| Disassemble | <b>POWER BOARD 43</b>          |

## WATER TANK ASSY 34

## HOSE CORD CAP 36

## BOILER ASSY 38

BRAIDED RUBBER HOSE -  
BOILER

## PUMP ASSY 45

## INLET TUBE - PUMP

## DE-AIR TUBE

## RINSE RUBBER COUPLING 50

## RINSE BUSH

## RINSE CAP ASSY 52

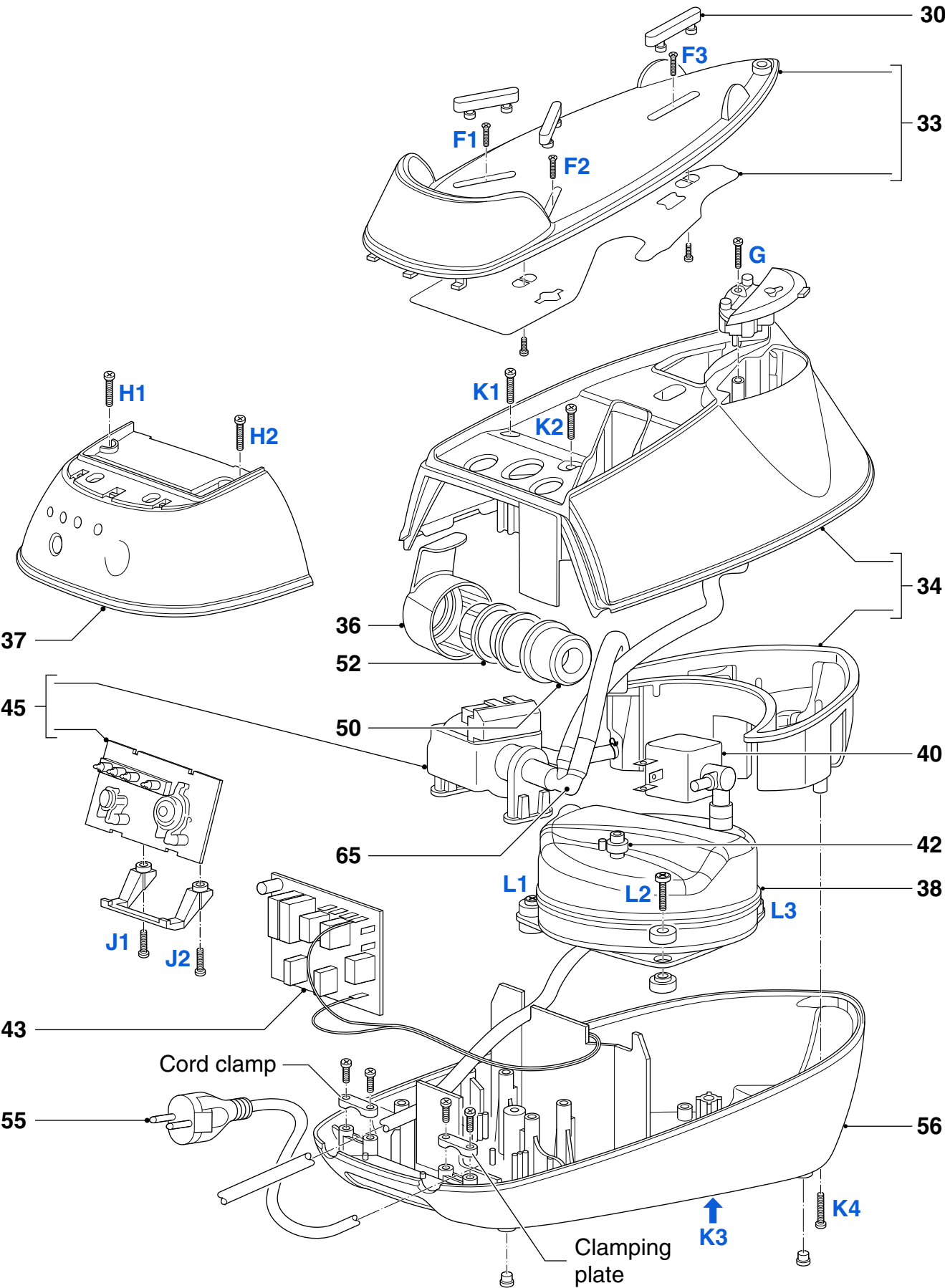
|             |                                     |
|-------------|-------------------------------------|
| Remove      | <b>TRAY RUBBER CAP 30 (3x)</b>      |
| Remove      | <b>Screw F1, F2, F3</b>             |
| Disassemble | <b>TRAY ASSY 33</b>                 |
| Remove      | <b>Screw H1, H2</b>                 |
| Disassemble | <b>FRONT PANEL 37</b>               |
| Disassemble | <b>HOSE CORD CAP 36</b>             |
| Disassemble | <b>RINSE CAP ASSY 52</b>            |
| Disassemble | <b>RINSE BUSH</b>                   |
| Disassemble | <b>RINSE RUBBER COUPLING 50</b>     |
| Remove      | <b>Screws K1, K2, K3, K4</b>        |
| Disconnect  | <b>INLET TUBE - PUMP</b>            |
| Disconnect  | <b>DE-AIR TUBE</b>                  |
| Disassemble | <b>WATER TANK ASSY 34</b>           |
| Disassemble | <b>BRAIDED RUBBER HOSE - BOILER</b> |
| Disassemble | <b>PUMP ASSY 45</b>                 |
| Remove      | <b>Torx screws L1, L2, L3</b>       |
| Disassemble | <b>TOP SPACER</b>                   |
| Disassemble | <b>BOILER ASSY 38</b>               |

## PARTS LIST - STAND

| Pos | Service code   | Description     | Remark   |
|-----|----------------|-----------------|----------|
| 30  | 4239 015 59631 | Tray rubber cap | Purple   |
| 33  | 4239 021 68791 | Tray assy       | White    |
| 34  | 4239 021 68961 | Water tank assy | Purple   |
| 36  | 4239 026 48491 | Hose cord knob  | Purple   |
| 37  | 4239 021 68931 | Front panel     | Printed  |
| 38  | 4239 021 39541 | Boiler assy     | High End |
| 40  | 4239 017 09892 | Electrovalve    |          |
| 42  | 4239 010 10261 | Inox clamp      |          |

| Pos | Service code   | Description                     | Remark   |
|-----|----------------|---------------------------------|----------|
| 43  | 4239 021 68611 | Power board                     |          |
| 45  | 4239 022 66221 | Control board-<br>Pump assy kit |          |
| 50  | 4239 015 56761 | Rinse rubber coupling           |          |
| 52  | 4239 021 68881 | Rinse cap assy                  | Purple   |
| 55  | 2422 070 98366 | Cord set                        | EU       |
| 56  | 4239 021 68721 | Stand bottom assy               | White    |
| 65  | 4239 026 42081 | De-air valve                    | High End |

**Note:** For Pos 45, please replace both components together when either one is faulty.  
The 2 components come as a service kit.



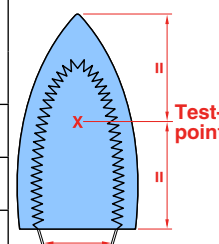
- Due to the high wattage of the iron, only the specified cord set must be used.
- Should damage be observed on the **HOSE-CORD ASSY** or **CORDSET 55**, they must be replaced. Continued usage is not allowed.
- When replacing the **MICROSWITCH ASSY 9**, please dress the 2 attached wires such that they are free of tension. Pulling force on the wires may affect the steam triggering.
- To avoid damage to the sealing & components of the **BOILER ASSY 38**, **NEVER** clean the boiler assy with vinegar, descaling agent or other corrosive chemicals.
- When replacing **ELECTROVALVE 40** or **PUMP ASSY 45**, please be reminded to apply loctite at the joints for good sealing.
- After the product has been repaired, it should function properly and has to meet the safety requirements & legal regulations as laid down & officially established at this moment.
- The following tests are common checks that are conducted on a repaired product before it is returned to the consumer.

### 1. Soleplate temperature

Check that soleplate temperature is within IEC requirement.

Measure the temperature of the soleplate after the iron has reached steady state i.e connected to the mains for at least 15 minutes. The table below shows the temperature requirement.

| Marking      | Soleplate temperature (Deg C) |         |                     | Material, for example                             |
|--------------|-------------------------------|---------|---------------------|---|
|              | Minimum                       | Maximum | Nominal + Tolerance |   |
| • (1 dot)    | 70                            | 120     | $95 \pm 25$         | Acetate, elastane, polyamide, polypropylene       |
| •• (2 dots)  | 100                           | 160     | $130 \pm 30$        | Cupro, polyester, silk, triacetate, viscose, wool |
| ••• (3 dots) | 140                           | 210     | $175 \pm 35$        | Cotton, linen                                     |



### 2. Leakage current

Check that leakage current is within IEC requirement.

Measure leakage current between LIVE/NEUTRAL & EARTH.

IEC requirement is that at 230V supply, the EARTH leakage current must be less than 0.75 mA.

### 3. Water leakage / Functionality

Check that there is no water leakage from any part of the product during operation.

Check that the functionality of the product (product dependent) eg. steaming, variable steam, SOS, ASO etc is working properly.

### 4. Loose part

Check that there are no loose parts eg. extra screw in the product that can cause short-circuit or product malfunction.



**Pump Assy Wire connections****Connector positions in DOTTED circle cannot be interchanged**