



Philips Consumer Lifestyle

# ServiceManual

## PRODUCT INFORMATION

Fast & powerful crease removal

- Soleplate: T-ionicGlide
- OptimalTemp Technology
- Steam output
- Vertical steam
- Steam pressure: Up to 5 bar
- Steam tip
- Power: 2400W
- Steam boost: 220 g
- Continuous steam output: 120 g/min

Easy to use

- Water tank capacity: 1500 ml
- Filling and emptying water: Extra large filling hole
- Refill any time
- Heat-up time: 2 min
- Hose storage: Hose storage compartment
- Cord storage: Cord clip
- Hose length: 1.6 m
- Safe for all fabrics: Even for delicates like silks
- Power cord length: 1.8 m

Sustainability

- ECO setting: 30% energy reduction

Calc management

- Calc clean solution: Demineralized water

Safety Information

- This product meets the requirements regarding interference suppression on radio and TV.
- After the product has been repaired, it should function properly and has to meet the safety requirements and legal regulations as officially laid down at this moment.

## TECHNICAL INFORMATION

Voltage	: 220 - 240V
Frequency	: 50 - 60 Hz
Power	: 2800W
Dimension (F-box)	: 400 (L) x 230 (W) x 280 (H) mm
Weight of iron	: 1.20 kg

Demineralized water only

PerfectCare Pure is designed to be used only with demineralized or distilled water. Demineralized or distilled water prevent your appliance from scale damage, your appliance will deliver powerful and clean steam for very long. Tap water filtered by the Philips IronCare filtering jug works perfectly well. The product should not be used with tap water, perfumed water nor Brita filtered water.

Compact and light

The compact design makes your appliance easy to storage. Space will never be an issue again! As it is very light, your appliance is easy to carry. Its light weight iron will make your ironing much more comfortable.

OptimalTemp Technology

OptimalTemp Technology from the PerfectCare steam generator always delivers one perfect setting for all your clothes thanks to:

- Advanced Smart Control Processor
- Centrifugal steam chamber.

Tested and approved by experts

Tested and approved by independent textile experts institutes.

INLAY 10
IRON PCBA 6
TRIGGER 9
CHASSIS 8
HOUSING & LIGHT RING ASSY 4
DOSING HEAD 2

Remove	Screw A1
Remove	INLAY 10
Remove	Screw B1
Remove	IRON PCBA 6
Remove	TRIGGER 9
Remove	Screws C1, C2
Remove	CHASSIS 8
Remove	Screws D1, D2, D3
Remove	HOUSING & LIGHT RING ASSY 4
Remove	DOSING HEAD 2

LED ASSY 5
HOSE CORD MTD ASSY 7
COVER 3
SOLEPLATE ASSY 1

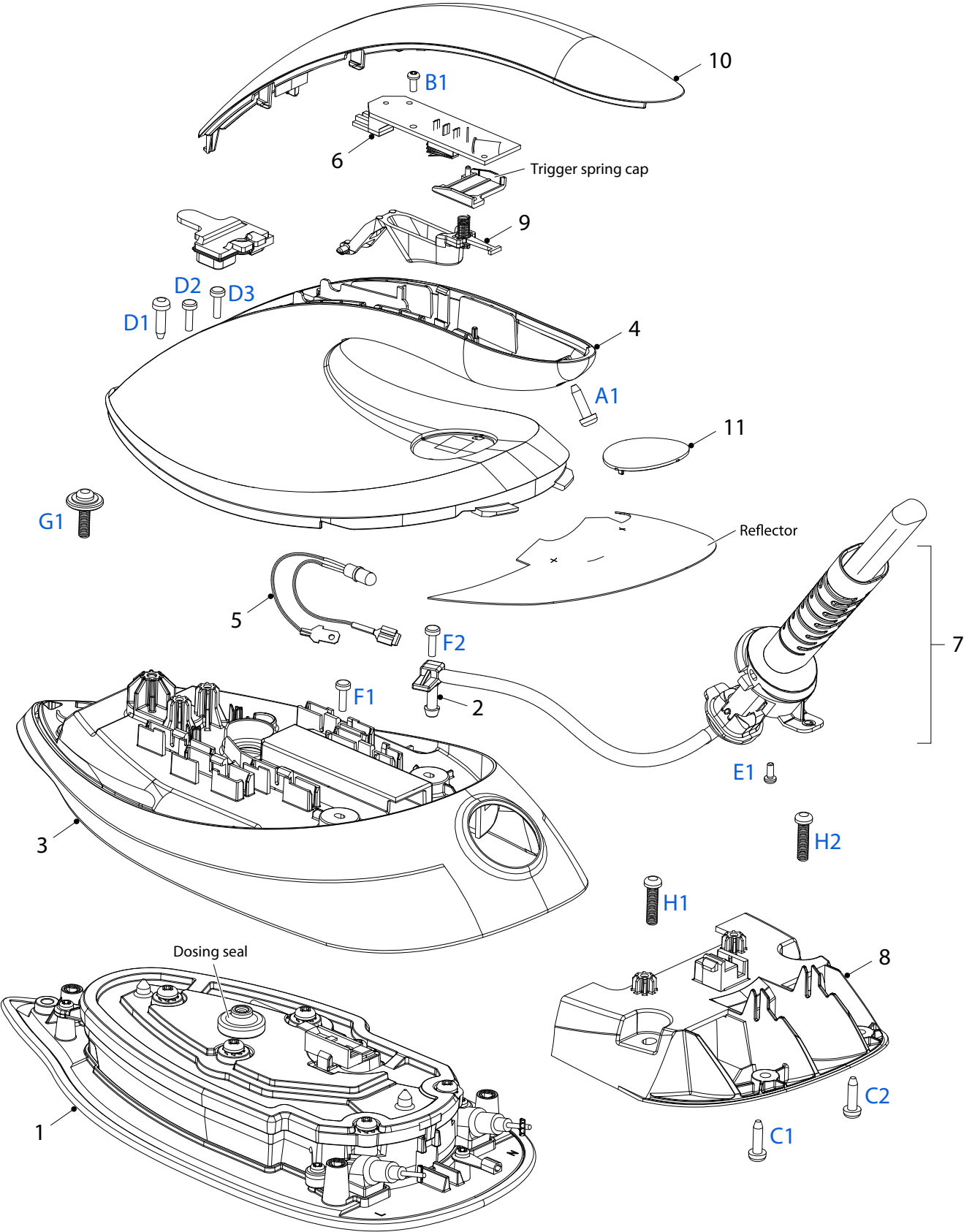
Remove	Screw A1
Remove	INLAY 10
Remove	Screw B1
Remove	IRON PCBA 6
Remove	TRIGGER 9
Remove	Screws C1, C2
Remove	CHASSIS 8
Remove	Screws D1, D2, D3
Remove	HOUSING & LIGHT RING ASSY 4
Remove	DOSING HEAD 2
Remove	LED ASSY 5
Remove	Screw E1
Remove	HOSE CORD MTD ASSY 7
Remove	Screws F1, F2, G1
Remove	COVER 3
Remove	Screws H1, H2
Remove	SOLEPLATE ASSY 1

## PARTS LIST - IRON (GC7630)

Pos	Service code	Description
1	4239 021 77141	Soleplate MTD assy
2	4239 026 53721	Dosing head
3	4239 026 53733	Cover
4	4239 021 79693	Housing & Light ring assy
5	4239 021 78811	LED assy
6	4239 021 77592	Iron PCBA
7	4239 021 79713	Hose cord MTD assy
8	4239 026 53774	Chassis
9	4239 026 55964	Trigger
10	4239 026 53813	Inlay
11	4239 021 79722	Deco plate assy

## ■ PARTS LIST - IRON (GC7631)

Pos	Service code	Description
1	4239 021 77141	Soleplate MTD assy
■ 2	4239 026 53722	Dosing head
3	4239 026 53733	Cover
■ 4	4239 021 79783	Housing & Light ring assy
5	4239 021 78811	LED assy
■ 6	4239 021 77593	Iron PCBA
■ 7	4239 021 79803	Hose cord MTD assy
8	4239 026 53774	Chassis
■ 9	4239 026 56044	Trigger
10	4239 026 53813	Inlay
■ 11	4239 021 79822	Deco plate assy



TRAY CAP 22
TRAY RUBBER FRONT 21
TRAY RUBBER 20
TRAY 19
CARTRIDGE LID 31
STAND BOTTOM 12
STAND BOTTOM CAP 13
WATER TANK ASSY 23

Remove	TRAY CAP 22
Remove	Screws A1, A2
Remove	TRAY RUBBER FRONT 21
Remove	TRAY RUBBER 20
Remove	Screws B1, B2, B3, B4
Remove	TRAY 19
Remove	CARTRIDGE LID 31
Remove	Screws C1, C2, C3, C4, C5, C6
Remove	STAND BOTTOM 12
Remove	Screw D1
Remove	STAND BOTTOM CAP 13
Remove	WATER TANK ASSY 23

FILLING DOOR 24
POWER BOARD PCBA 27
PUMP ASSY 16
POWER BUTTON 26
POWER CORD 25

Remove	TRAY CAP 22
Remove	Screws A1, A2
Remove	TRAY RUBBER FRONT 21
Remove	TRAY RUBBER 20
Remove	Screws B1, B2, B3, B4
Remove	TRAY 19
Remove	Screws C1, C2, C3, C4, C5, C6
Remove	STAND BOTTOM 12
Remove	Screw D1
Remove	STAND BOTTOM CAP 13
Remove	WATER TANK ASSY 23
Remove	FILLING DOOR 24
Remove	Screws E1, E2
Remove	POWER BOARD PCBA 27
Remove	PUMP ASSY 16
Remove	Screw F1
Remove	POWER BUTTON 26
Remove	Screws G1, G2
Remove	POWER CORD 25

## PARTS LIST - STAND (GC7630)

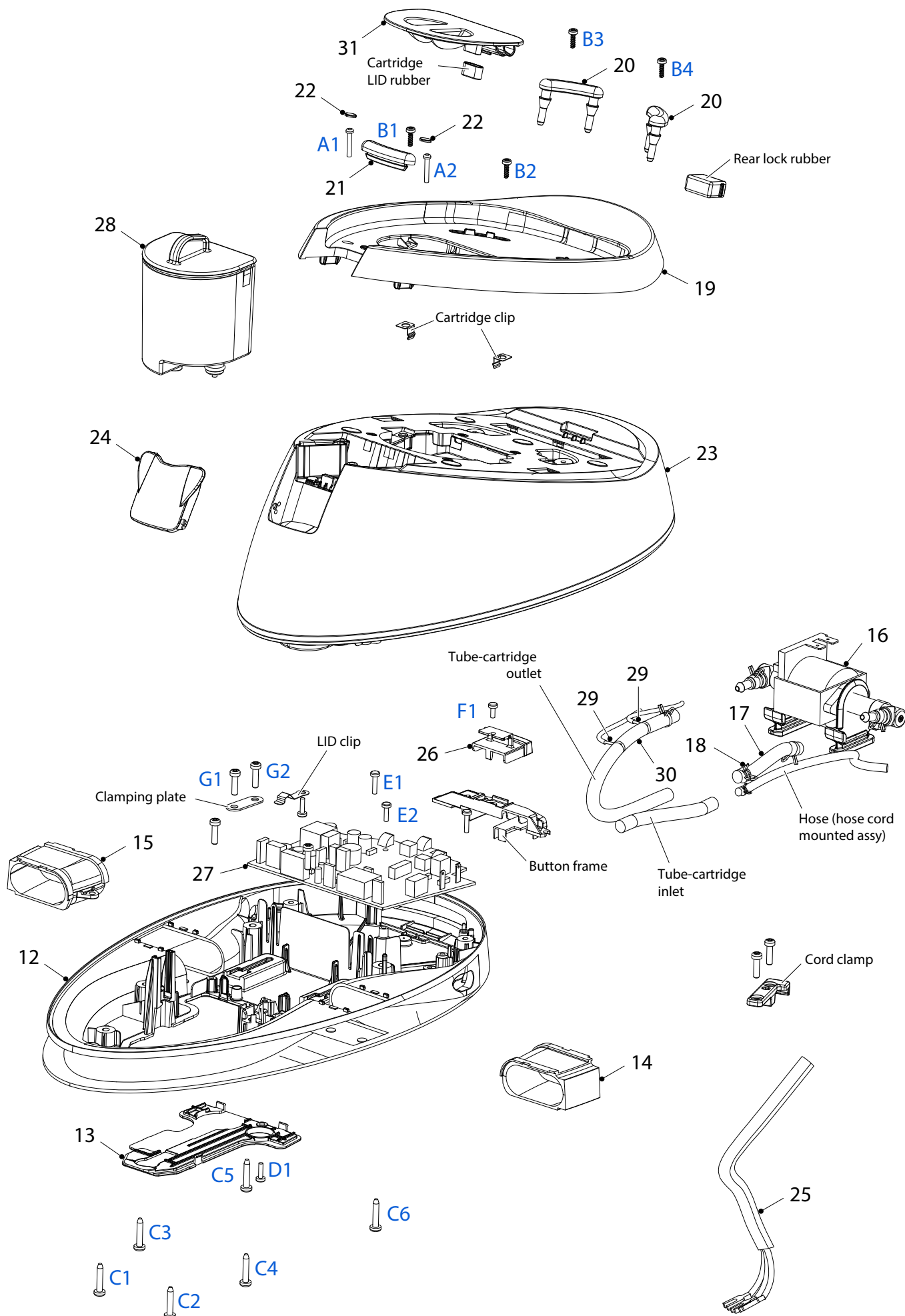
Pos	Service code	Description
12	4239 026 53833	Stand bottom
13	4239 026 53841	Stand bottom cap
14	4239 026 55982	Belt loop left
15	4239 026 55992	Belt loop right
16	4239 021 81341	Pump assy
17	4239 015 60543	Tube-Pump outlet
18	4239 010 10261	Hose clip
19	4239 021 79741	Tray - No lock
20	4239 015 60431	Tray rubber
21	4239 015 60442	Tray rubber front

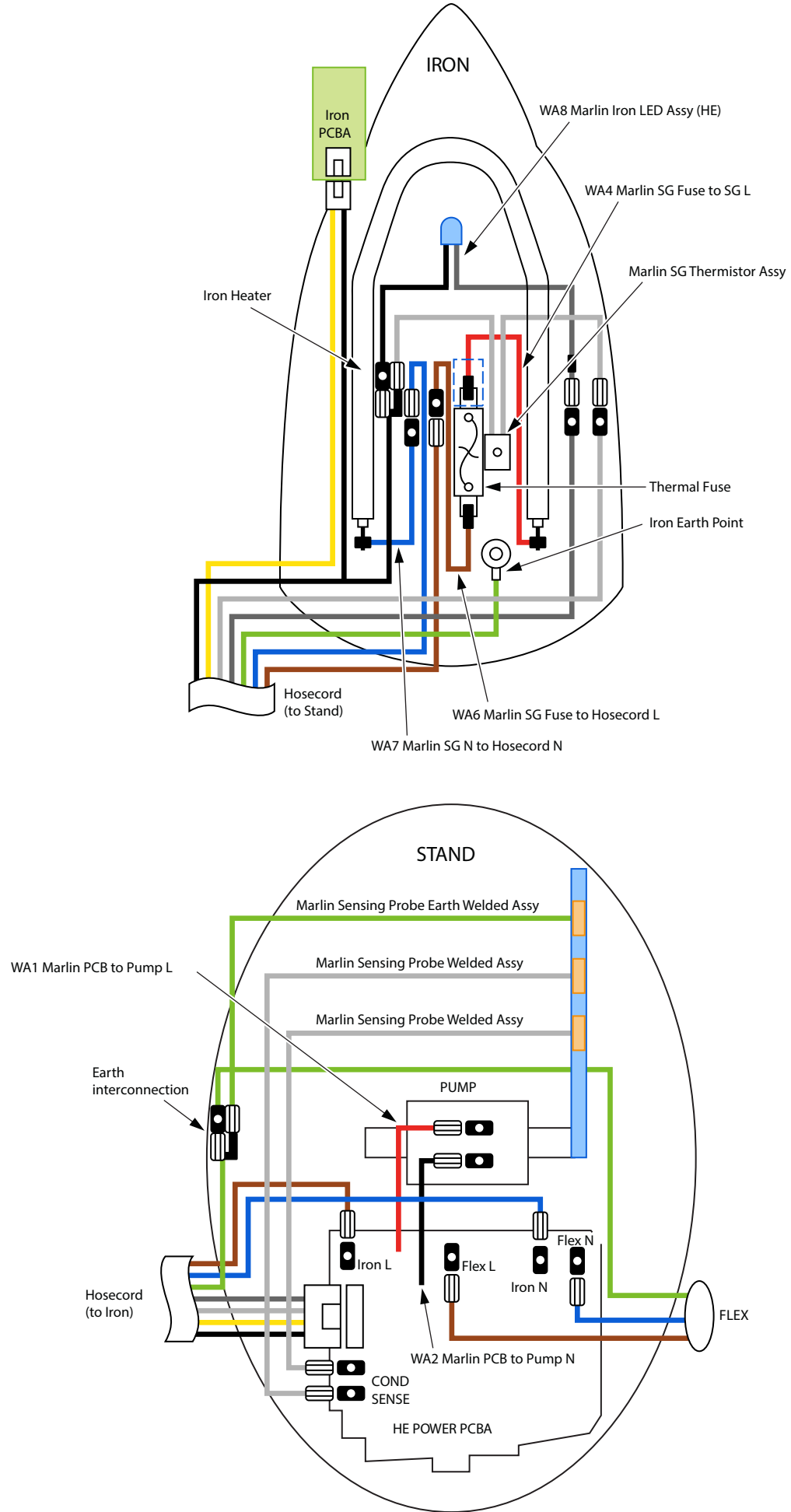
Pos	Service code	Description
22	4239 026 55921	Tray cap
23	4239 021 79755	Water tank assy
24	4239 026 56012	Filling door
25	2422 070 98399	Power cord
26	4239 021 80811	Power button
27	4239 021 77574	Power board PCBA
27b	4239 021 89581	Power board HE PCBA
28	4239 021 78464	Cartridge welded assy
29	4239 021 77724	Sensing probe
30	4239 081 03340	Tube-Probe interconnect
31	4239 026 53931	Cartridge lid

## PARTS LIST - STAND (GC7631)

Pos	Service code	Description
12	4239 026 53833	Stand bottom
13	4239 026 53841	Stand bottom cap
14	4239 026 56062	Belt loop left
15	4239 026 56072	Belt loop right
16	4239 021 81341	Pump assy
17		Tube-Pump outlet
18	4239 010 10261	Hose clip
19	4239 021 81351	Tray - No lock
20	4239 015 60431	Tray rubber
21	4239 015 60442	Tray rubber front

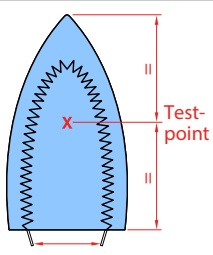
Pos	Service code	Description
22	4239 026 55921	Tray cap
23	4239 021 80466	Water tank assy
24	4239 026 56092	Filling door
25	2422 070 98399	Power cord
26	4239 021 79631	Power button
27	4239 021 77576	Power board PCBA
27b	4239 021 89581	Power board HE PCBA
28	4239 021 78465	Cartridge welded assy
29	4239 021 77724	Sensing probe
30	4239 081 03340	Tube-Probe interconnect
31	4239 026 53931	Cartridge lid





- Due to the high wattage of the iron, only the specified cord set must be used.
- Should damage be observed on the POWERCORD 25 , it must be replaced. Continued usage is not allowed.
- If STAND BOTTOM 12 is provided without type plate information eg. Type number, voltage etc. When replacing the cover, engrave the type number & voltage on the type plate with a sharp object.
- After the product has been repaired, it should function properly and has to meet the safety requirements & legal regulation as laid down & officially established at this moment.
- The following tests are common checks that are conducted on a repaired product before it is returned to the consumer.

1. Soleplate temperature  
Check that soleplate temperature is within IEC requirement.

Soleplate temperature (Deg C)		Materials, for example	
Minimum	Maximum		
120	143	All fabric types	

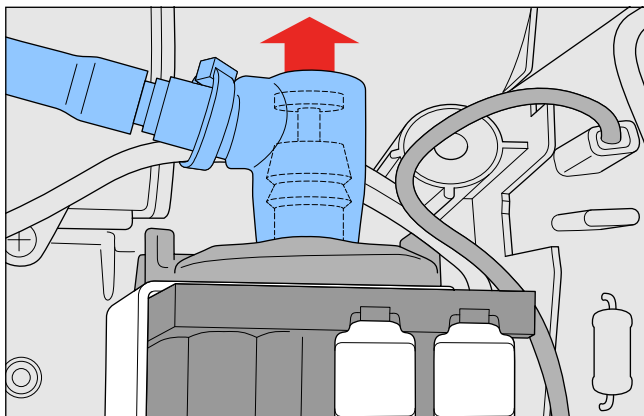
2. Leakage current  
Check that leakage current is within IEC requirement.  
Measure leakage current between LIVE/NEUTRAL & EARTH.  
IEC requirement is that at 230V supply, the EARTH leakage current must be less than 0.75 mA.
3. Water leakage / Functionality  
Check that there is no water leakage from any part of the product during operation.  
Check that the functionality of the product (product dependent) eg. Steaming, steam trigger, variable steam, SOS, PCBA etc is working properly.
4. Loose part  
Check that there are no loose parts eg. Extra screws in the product that can cause short-circuit or product malfunctions.
5. Fuse open circuit  
When replacing fuse, to also service the water tubes which is probably choked with calc.
6. PCBAs ESD control  
All failed PCBAs including to be packed with ESD bags for shipment.
7. Screws  
Screws should be the defined screws in terms of length and material used.



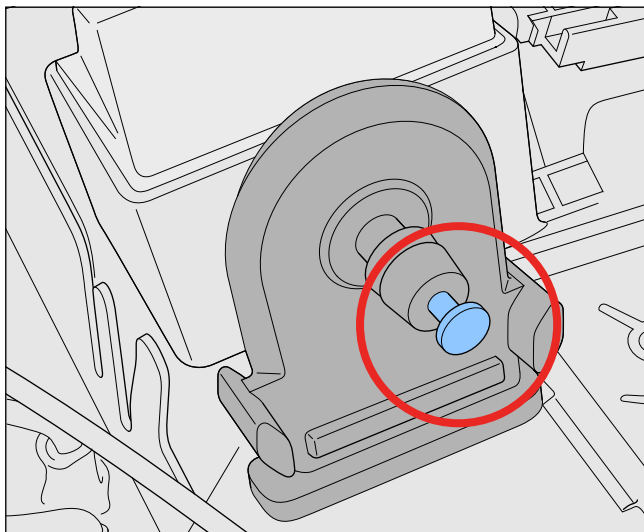
## 8. Pump - Cleaning restrictor

Service center to perform pump restrictor cleaning via following step if observe pump not pumping water:

1. De-assemble water tube of pump.



2. Clean restrictor via sharp object.



3. Re-assemble stand

## 9. Cartridge compartment - Cleaning

Service center to perform cleaning of Cartridge compartment via following step:

1. Open Cartridge lid of stand.
2. Clean out any residue located on the mesh.

