

**Philips Domestic Appliances and Personal Care**

Service Manual

PRODUCT INFORMATION**Features****Iron**

- Careeza soleplate
- Steam output: 90 g/min
- Shot Of Steam (SOS): 100 g/min
- Hose cord length: 1.7 m

Stand

- Pressure: 3.5 bar
- Boiler capacity: 400 ml
- Detachable water tank capacity: 800 ml
- Water level sensor to ensure constant steam output
- Steam ready in 2.5 min
- Power cord length: 2.0 m
- Calc clean function
- Integrated cord & hose storage

Safety Information

- This product meets the requirements regarding interference suppression on radio and TV.
- After the product has been repaired, it should function properly and has to meet the safety requirements as officially laid down at this moment.

TECHNICAL INFORMATION

Voltage : 230 V

Frequency : 50 Hz

Power consumption

Iron : 800 W

Boiler : 1400 W

Dimension (F-box) : 40 cm (L) x 40 cm (W) x 21 cm (H)

Weight (with package) : 6.4 kg

Water advice

If the tap water in your area is very hard, it is advisable to mix the tap water with an equal amount of demineralised water.

Careeza soleplate

High scratch resistant & superior gliding on various types of fabric.

Shot Of Steam (SOS)

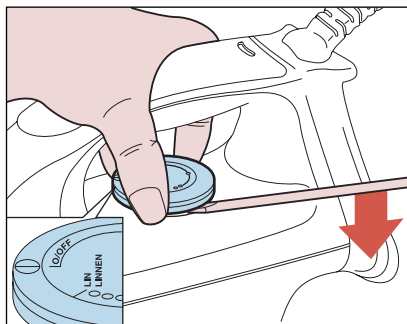
SOS generates a high steam rate of 100 g/min to remove persistent wrinkles on the garment.

Detachable water tank

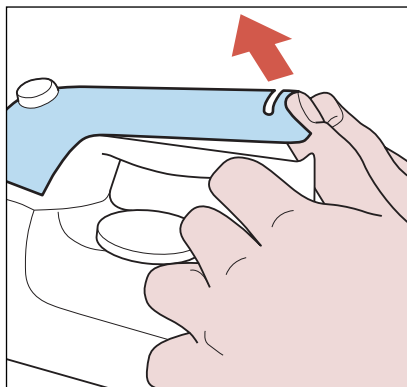
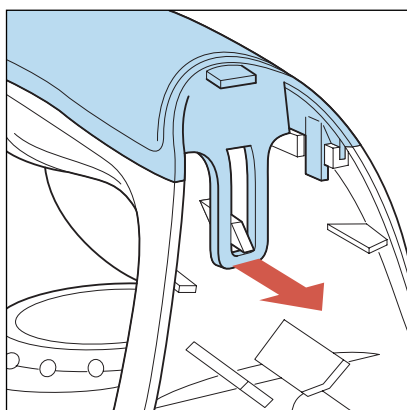
The detachable water tank can be refilled at any moment, hence offering non-stop ironing.

Water level sensor

The intelligent water level sensor delivers a constant high steam output.

THERMOSTAT DIAL 1**RATTLE SPRING 15****BACKPLATE 2**

Disassemble **DIAL 1**
 Remove **Screw A**
 Remove **Connection**
 Remove **Hose**

INLAY (SOS) 3**SOS KNOB 4****TRIGGER 14****IRON LAMP ASSY 5****MICRO SWITCH 6****HANDLE PRINTED 7**

Disassemble **DIAL 1**
 Remove **Screw A**
 Remove **Connection**
 Remove **Hose**
 Disassemble **BACKPLATE 2**
 Disassemble **INLAY (SOS) 3**
SOS KNOB 4
IRON LAMP ASSY 5
MICRO SWITCH 6
 Remove **Screws B (3 x)**

HOSE-CORD ASSY 8**SWIVEL 9****STEAM DEVIATOR 10****THERMOSTAT BUSH 11**

Disassemble **DIAL 1**
 Remove **Screw A**
 Remove **Connection**
 Remove **Hose**
 Disassemble **BACKPLATE 2**
 Disassemble **INLAY (SOS) 3**
SOS KNOB 4
IRON LAMP ASSY 5
MICRO SWITCH 6
 Remove **Screws B (3 x)**
 Disassemble **HANDLE PRINTED 7**

IRON COVER SPRAYED 12**SOLEPLATE ASSY 13**

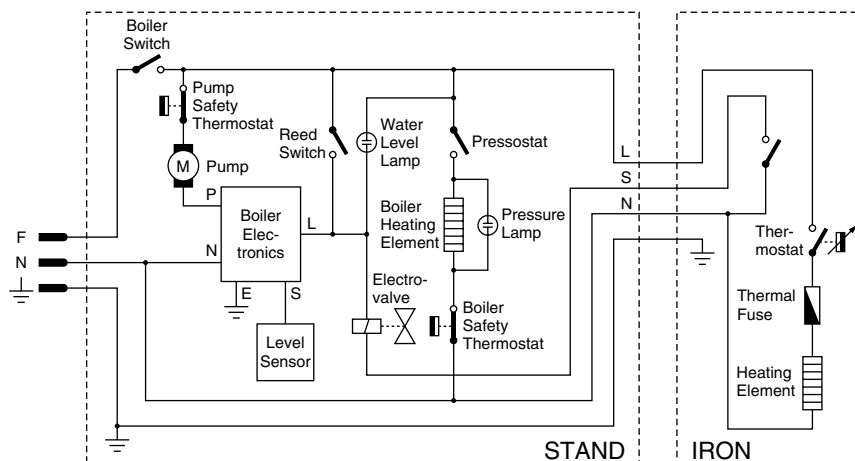
Disassemble **DIAL 1**
 Remove **Screw A**
 Remove **Connection**
 Remove **Hose**
 Disassemble **BACKPLATE 2**
 Disassemble **INLAY (SOS) 3**
SOS KNOB 4
IRON LAMP ASSY 5
MICRO SWITCH 6
 Remove **Screws B (3 x)**
 Disassemble **HANDLE PRINTED 7**
 Disassemble **HOSE-CORD ASSY 8**
SWIVEL 9
STEAM DEVIATOR 10
THERMOSTAT BUSH 11
 Remove **Screws C (3 x)**

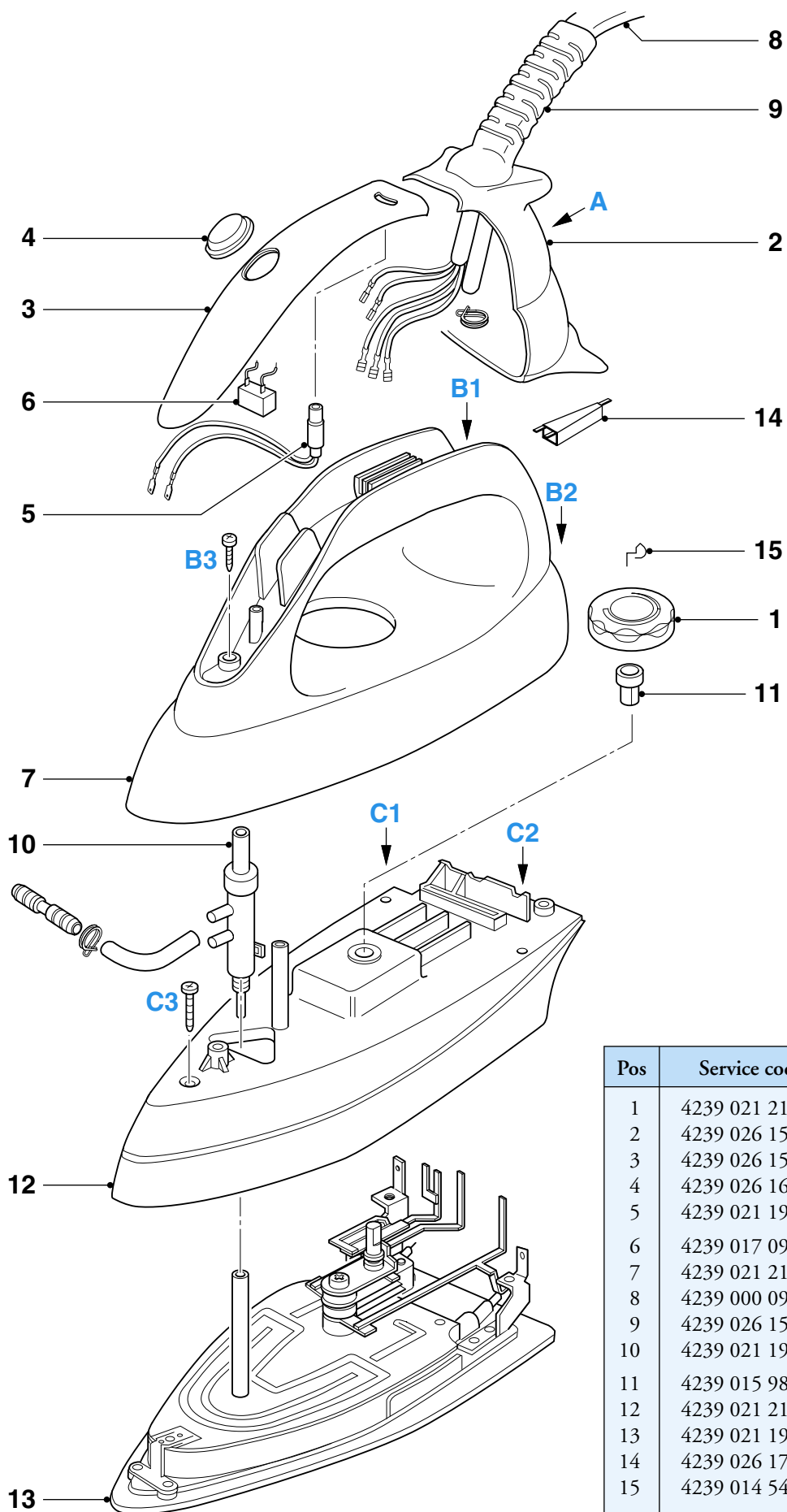
REPAIR INSTRUCTIONS

- For disassembly, you will need a Torx screwdriver: 362 TR T20 x 100

OPTIONAL (accessories)

- No specific issues





Pos	Service code	Description
1	4239 021 21950	Thermostat dial (Fre/Dut)
2	4239 026 15690	Backplate
3	4239 026 15680	Inlay (SOS)
4	4239 026 16940	SOS knob
5	4239 021 19630	Iron lamp assy
6	4239 017 09170	Microswitch
7	4239 021 21940	Handle printed
8	4239 000 09140	Hose-cord assy + microswitch
9	4239 026 15580	Swivel
10	4239 021 19620	Steam deviator assy
11	4239 015 98410	Thermostat bush
12	4239 021 21930	Iron cover sprayed
13	4239 021 19510	Soleplate assy 230V
14	4239 026 17060	Trigger
15	4239 014 54060	Rattle spring

STAND

TRAY ASSY 31

STAND TOP PRINTED 32

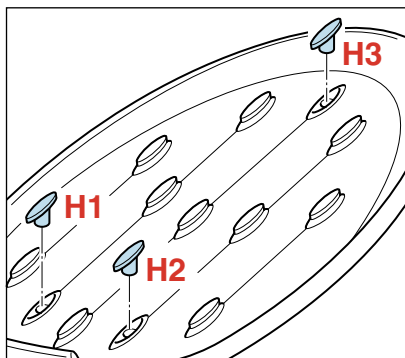
PUMP ASSY 41

ELECTRONIC MODULE
(STAND) 46

BOILER MOUNTED ASSY 50

STAND BOTTOM 52

Disassemble TRAY RUBBER CAP 30
at positions H1, H2, H3

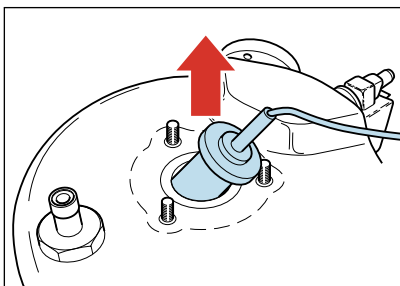
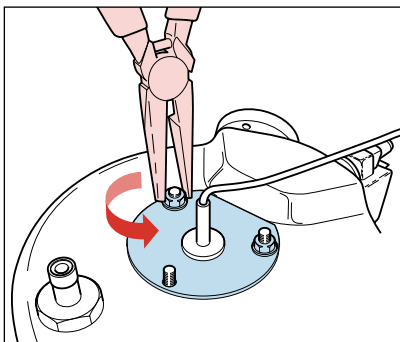


Remove Screw H (3 x)
Disassemble TRAY ASSY 31
Remove Screw J (5 x)
Disassemble STAND TOP
PRINTED 32

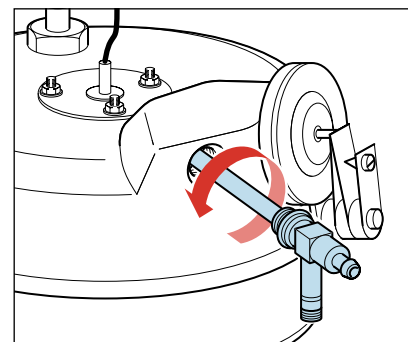
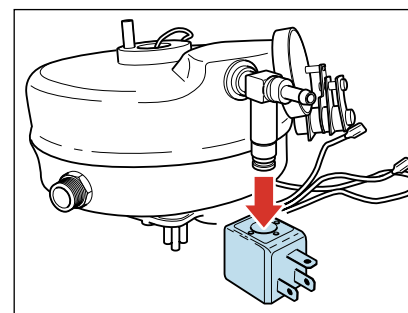
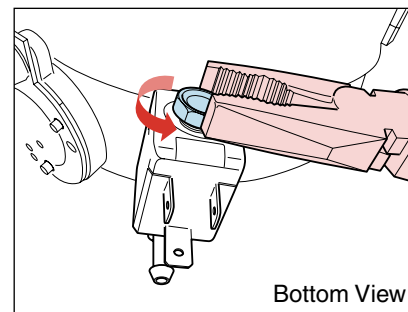
REED SWITCH ASSY 47

Remove Screw K
Disassemble REED SWITCH
ASSY 47

WATER LEVEL SENSOR 42



ELECTROVALVE ASSY 43



DETACHABLE TANK ASSY

SEALING RING 61

Remove Screw L (2 x)
Disassemble Tank washer
Disassemble SEALING RING 61

SPRING (TANK) 62

Remove Screw M (7 x)
Disassemble SPRING (TANK) 62

* For full details on disassembly, please refer to service CD-ROM.

REPAIR INSTRUCTIONS – STAND

- For disassembly, you will need a Torx screwdriver 362TR T20 x 100
- To avoid damage to the sealing and components of the boiler, NEVER clean the boiler with vinegar, descaling agent or other chemicals.
- When replacing PUMP ASSY 41 or ELECTROVALVE ASSY 43, be reminded to apply locite at the joint for good sealing.
- When replacing REED SWITCH ASSY 47, be reminded to orientate such that the red wire is facing the water tank.

For product before Wk0451, the old pump assy (RED, service code: 4239 021 22030) is used. If you are replacing the old pump assy with a new pump assy (BLUE, service code: 4239 021 27120), please be advised to cut the BLACK INSULATED HOSE 49 by 10 mm to avoid the hose from touching the stand top and hence creating noise during operation.

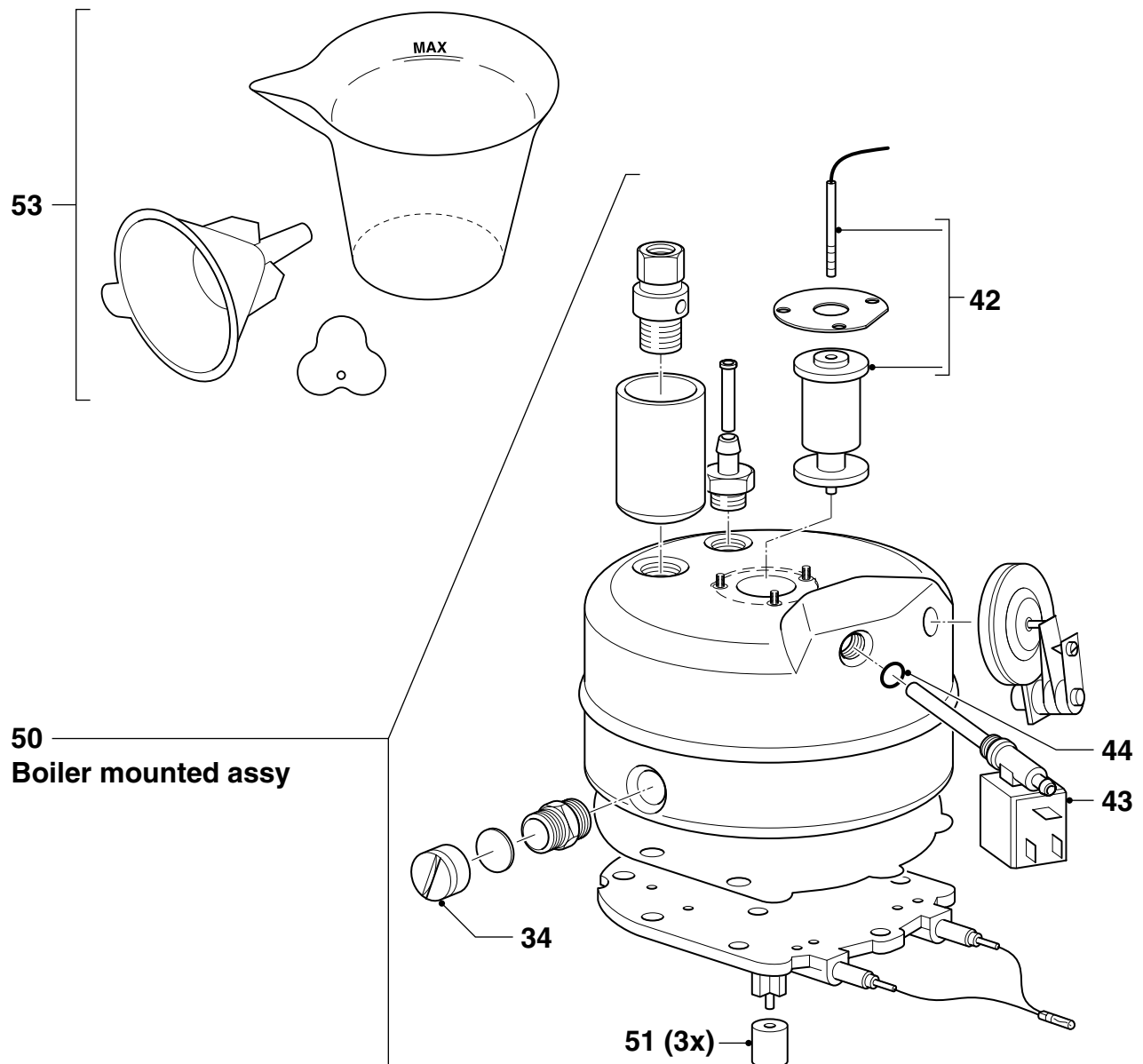
STAND

Pos	Service code	Description
30	4239 015 55370	Tray rubber cap
31	4239 021 22110	Tray Assy
32	4239 021 22170	Stand Top Printed
33	4239 021 23470	Calc clean cap
34	4239 010 08920	Rinse plug
35	4239 015 55640	Rinse coupling
36	4239 017 08810	Light switch
37	4239 021 22050	Pilot lamp assy
38	4239 000 09150	Cordset EU
39	4239 015 55500	Red rubber hose
40	4239 015 55630	Rubber support for pump
41	4239 021 27120	Pump assembly
42	4239 021 22090	Water level sensor
43	4239 021 22610	Electrovalve assy
44	4239 017 09150	Teflon ring
45	4239 026 17030	Cord storage Hook

Pos	Service code	Description
46	4239 021 22070	Electronic module (Stand)
47	4239 021 22060	Reed switch assy
48	4239 010 09120	Inox clamp
49	4239 015 55510	Black insulated hose
50	4239 021 27100	Boiler mounted assy
51	4239 015 55280	Rubber Spacer
52	4239 026 17020	Stand Bottom
53	4239 021 22720	Rinse kit assy

DETACHABLE WATER TANK

Pos	Service code	Description
60	4239 021 22020	Detachable tank assy
61	4239 015 55390	Sealing ring
62	4239 014 54070	Spring (Tank)



Note: Boiler mounted assy (Pos 50) does not include items 34, 42, 43, 44 and 51

