



Philips Consumer Lifestyle

Service Manual

PRODUCT INFORMATION

Iron

- SteamGlide soleplate
- Steam rate max. 110 g/min
- Steam boost max. 150 g/min
- 2 dot heat up time < 75 sec

Stand

- Rotary power on knob
- Inox boiler pressure max. 5 bar
- Time to steam < 2 min
- 3 level steam selection
- Hose cord storage hook
- Auto cord winder
- Hose cord length 1.9 m
- Power cord length 1.8 m
- Detachable iron resting mat
- Iron carry lock
- Water tank empty light
- Detachable water tank capacity 1.6 L
- Anti calc cartridge in water tank
- ECO steam setting

EMF & Service Information

- This product meets the requirements regarding interference suppression on radio & TV.
- After the product has been repaired, it should function properly & has to meet the safety requirements as officially laid down at this moment.

TECHNICAL INFORMATION

Voltage	: 220 - 240 V
Frequency	: 50 - 60 Hz
Power - Iron	: 800 W
- Boiler	: 1200 W
Dimension (F-box)	: 428 mm x 258 mm x 384 mm
Weight	: 5.3 kg

SteamGlide soleplate

This specially treated soleplate is designed with 2 distinctly different types of steam vents:

- Large vents for maximum crease removal
- Fine vents for best glide

Detachable iron resting mat

This is a heat resistant mat that can be detached from the tray. It allows you to place your iron horizontally on the ironing board.

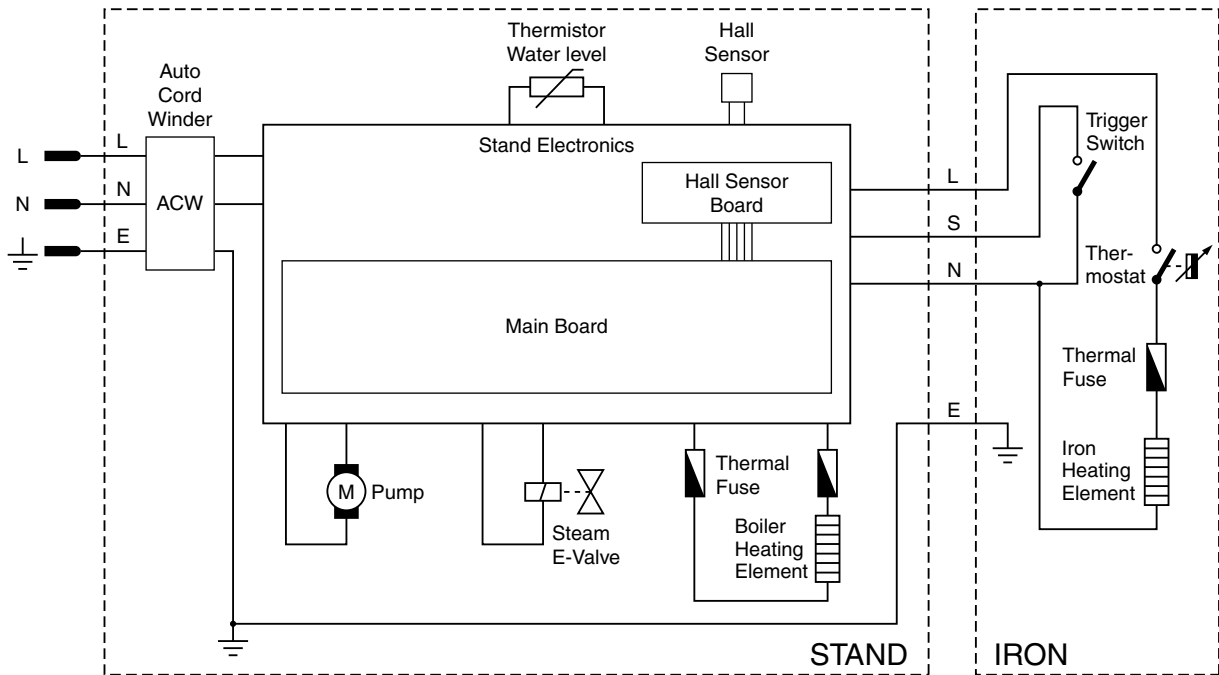
Iron carry lock

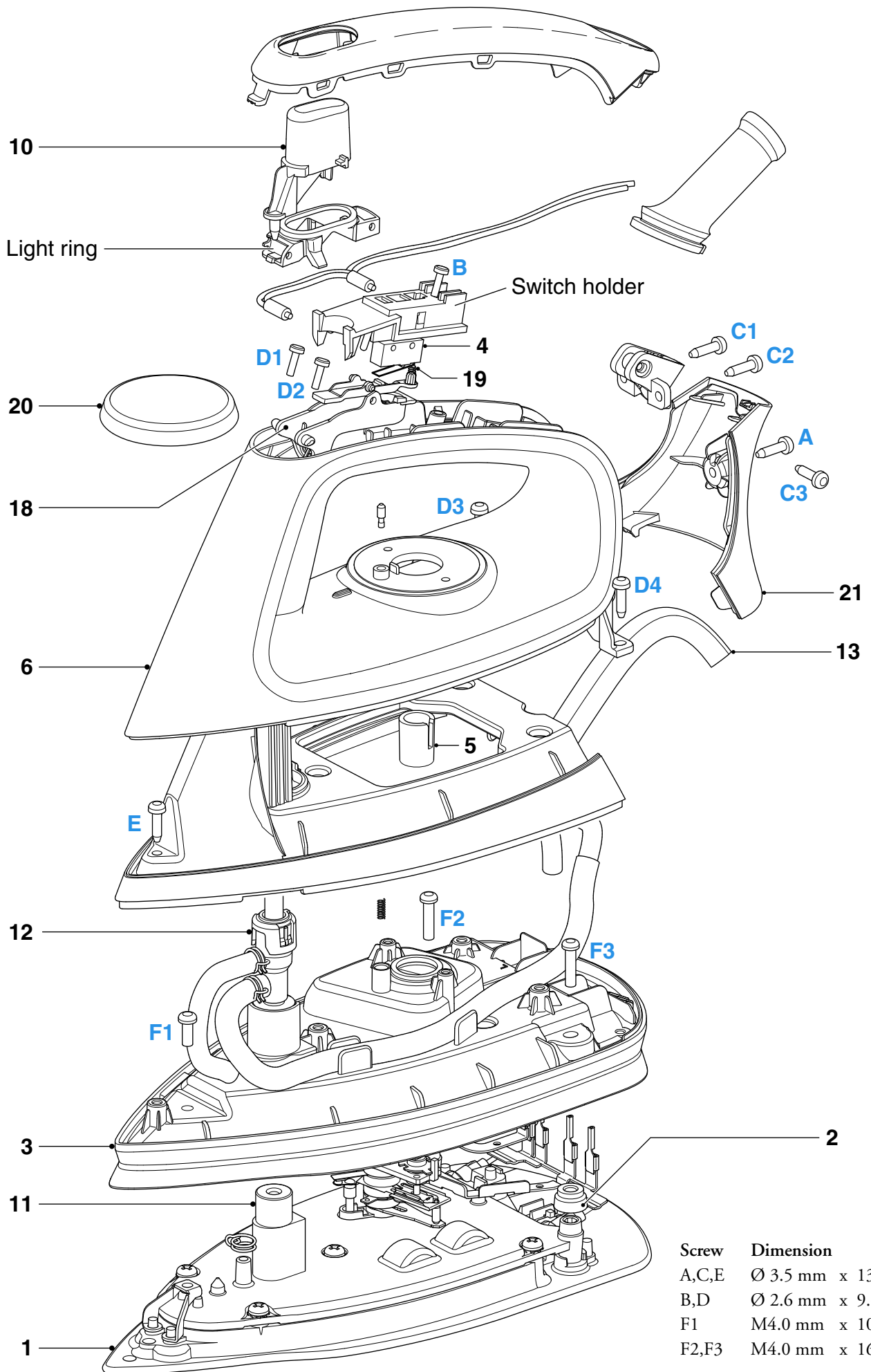
Iron can be locked to the stand via a carry lock slide. This allows you to carry the whole appliance by the handle of the iron.

BACKPLATE 21**INLAY****SOS KNOB 10****LAMP ASSY****MICROSWITCH ASSY 4****HOSE CORD CABLE
ASSY 13****THERMOSTAT DIAL 20****HOUSING PRINTED 6****SUB-HOUSING****STEAM DEVIATOR ASSY 12****COVER SOS MOLDED 3****SOS SEAL 11****SOLEPLATE
MOUNTED ASSY 1**

Remove Screw A
Disassemble **BACKPLATE 21**
Disassemble **INLAY**
Disassemble **SOS KNOB 10**
Disengage **Ribs of light ring**
Disassemble **LAMP ASSY**
Remove **Screw B**
Disassemble **Switch holder**
Disassemble **MICROSWITCH ASSY 4**
Remove **Screws C1, C2, C3**
Disassemble **HOSE CORD CABLE ASSY 13**
Disassemble **THERMOSTAT DIAL 20**
Remove **Screws D1, D2, D3, D4**
Disassemble **HOUSING PRINTED 6**
Remove **Screw E**
Disassemble **SUB-HOUSING**
Disassemble **STEAM DEVIATOR ASSY 12**
Remove **Screws F1, F2, F3**
Disassemble **COVER SOS MOLDED 3**

Pos	Service code	Description
1	4239 021 51301	Soleplate assy 230 V
2	4239 015 70150	Ryton ring
3	4239 021 48240	Cover SOS painted
4	4239 021 44410	Micro-switch assy
5	4239 026 13220	Thermostat bush
6	4239 021 50551	Housing printed assy
10	4239 026 31510	SOS knob
11	4239 015 57400	SOS seal
12	4239 021 31780	Steam deviator assy
13	4239 021 50571	Hose cord mounted assy
18	4239 026 31550	Trigger SOS
19	4239 014 54690	Trigger spring
20	4239 021 50591	Thermostat dial printed
21	4239 026 34161	Backplate





Screw	Dimension
A,C,E	Ø 3.5 mm x 13 mm
B,D	Ø 2.6 mm x 9.6 mm
F1	M4.0 mm x 10 mm
F2,F3	M4.0 mm x 16 mm

DISASSEMBLY ADVICE - STAND

GC8565

- Disassemble TRAY RUBBER CAP FRONT 52
- Disassemble TRAY RUBBER CAP REAR 51
- Remove Screws J1, J2, J3
- Disassemble TRAY 50
- Remove Screws K1, K2
- Disassemble STAND RIM, RUBBER FRONT LOCK 48
- Remove Screws L1, L2, M1, M2 and disengage all connectors on PCB
- Disassemble DISPLAY PANEL PRINTED ASSY 47
- Remove Screws U1, U2
- Disassemble REAR LOCK ASSY 58

Note:

For re-assembly, sequence is STAND TOP first, then DISPLAY PANEL PRINTED ASSY.

- Disassemble INLET COUPLING PLATE
- Disassemble RINSE CAP ASSY 55, RINSE BUSH, RINSE RUBBER 53
- Remove Screws M3, M4, N1, N2
- Disassemble STAND TOP ASSY 43
- Remove Screw P
- Disassemble FLEX ASSY COMPARTMENT
- Remove Screws Q1, Q2, Q3
- Disassemble AUTO CORD WINDER ASSY 42
- Remove Screws R1, R2
- Remove Hose-cord clamp
- Disassemble HOSE CORD CABLE ASSY 13


Note:

Take note of the orientation on the hose-cord clamp

- Remove Screws S1, S2, S3, S4
- Remove 2 x pump support plates
- Remove Inox clamp at boiler inlet collar
- Disengage 2 x wire connectors on PUMP ASSY 31
- Disassemble PUMP ASSY 31
- Remove Screws T1, T2
- Remove Nut for Earth wires
- Disassemble BOILER ASSY 39

PARTS LIST - STAND

Pos	Service code	Description
30	4239 021 48370	Stand bottom assy
31	4239 021 48380	Pump assy
35	4239 010 10260	Inox clamp
36	4239 015 58090	Boiler rubber support
37	4239 026 32180	Spacer bottom
38	4239 026 31640	Spacer top
39	4239 021 49090	Boiler assy
40	4239 017 09890	Electrovalve
42	4239 021 48550	Auto cord winder mounted assy EU
43	4239 021 50491	Stand top assy
44	4239 021 48570	Hall sensor PCBA assy
47	4239 021 50601	Display panel printed assy
48	4239 015 58821	Rubber front lock
50	4239 021 48480	Tray sprayed
51	4239 015 58791	Tray rubber cap rear
52	4239 015 58801	Tray rubber cap front
53	4239 015 58841	Rinse rubber
55	4239 021 50511	Rinse cap assy
56	4239 021 50531	Tank assy
57	4239 021 48540	Iron mat assy
58	4239 021 50541	Rear lock assy - High End
59	4239 015 58201	O-ring
60	4239 026 42081	De-air valve

 = changed

EXPLODED VIEW - STAND

GC8565

Screw	Dimension
J,K,L,U	Ø 3.5 mm x 13 mm
M,N,P,Q,R	M3.5 mm x 18 mm
S	Ø 2.6 mm x 14 mm
T	M3.5 mm x 22 mm

