

Service
Service
Service



Philips Consumer Lifestyle

Service Manual

PRODUCT INFORMATION

Fast & powerful crease removal

- Soleplate: SteamGlide
- OptimalTemp
- Continuous steam output: 120 g/min
- Steam boost: 230 g/min
- Vertical steam
- Steam pressure: Up to 5 bar
- Steam tip
- Power: 2400 W

Easy to use

- Water tank capacity: 1500 ml
- Filling and emptying water: Detachable water tank
Extra large opening door
- Refill any time
- Heat-up time: 2 min
- Hose storage: Hose storage compartment
- Cord storage: Cord storage compartment
- Power cord length: 1.8 m
- Cord freedom (swivel): 180 degree cord freedom
- Hose length: 1.7 m
- Safe for all fabrics: Even for delicates like silks

Calc management

- Suitable for tap water
- Calc clean solution: Easy De-calc
- Calc clean reminder

EMF & Service Information

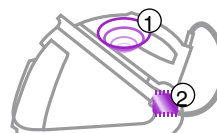
- This product meets the requirements regarding interference suppression on radio & TV.
- After the product has been repaired, it should function properly & has to meet the safety requirements as officially laid down at this moment.

TECHNICAL INFORMATION

| | |
|-------------------|---|
| Voltage | : 220 - 240 V |
| Frequency | : 50 - 60 Hz |
| Power - Iron | : 800 W at 230 V |
| - Boiler | : 1370 W at 230 V |
| Dimension (F-box) | : 491 mm x 305 mm x 335 mm (Depth x Width x Height) |
| Weight | : Weight of iron: 1.2 kg Weight of iron + base: 5 kg |

Optimal Temp technology

- Delivers always perfect combination of steam and temperature
- 100% easy to use, no adjustment required
- 100% safe on all ironable garments
- 100% effective on all fabrics, no other iron is faster
- Tested and approved by independent textile experts



Always the perfect setting thanks to:
1 - Cylonic steam chamber
2 - Advanced Smart control processor

Easy De-calc

Easy De-calc cap allows hassle free & effective scale removal to extend the life of the steam generator.

DISASSEMBLY ADVICE - IRON

BACKPLATE ASSY 16

SOS KNOB 13

INLAY MOLDED 17

MICRO-SWITCH ASSY 12

HOSE CORD MOUNTED
ASSY SOS 15HOUSING & LENS
ASSY PRINTED 9

LIGHT GUIDE ASSY 10

COVER MOLDED SOS 8

DEVIATOR ASSY 3

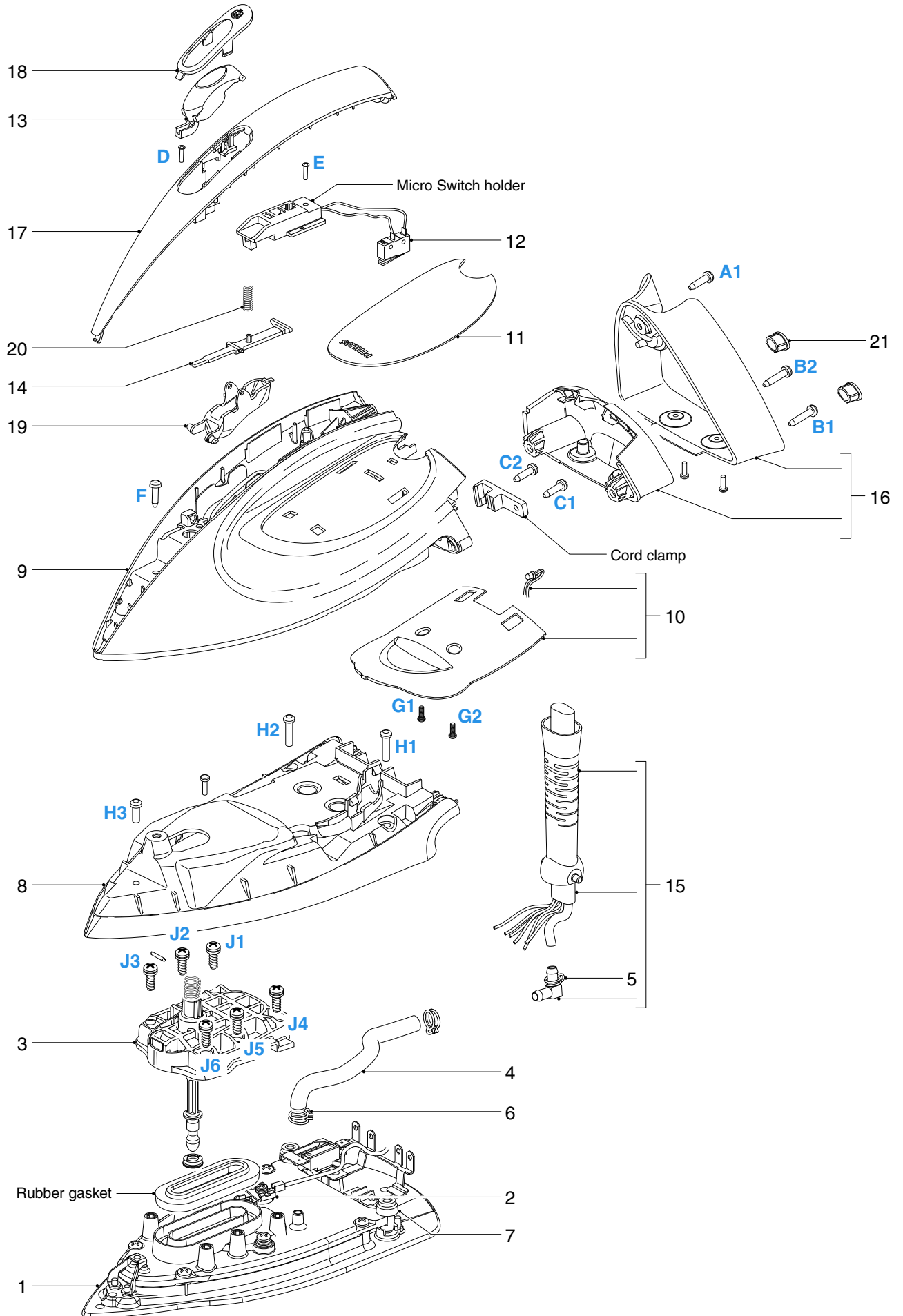
SOLEPLATE MOUNTED
ASSY 1

- Remove Screw A
- Disassemble BACKPLATE SCREW PLATE 21
- Remove Screws B1, B2
- Disassemble BACKPLATE ASSY 16
- Remove Screws C1, C2
- Remove Cord clamp
- Disassemble SOS KNOB COVER 18

*Tip for disassembling SOS KNOB COVER 18:
Carefully insert a sharp object into the gap at the side & slowly
lift up the part*

- Disassemble SOS KNOB 13
- Remove Screw D
- Disassemble INLAY MOLDED 17
- Remove Screw E
- Disassemble MICRO-SWITCH ASSY 12
- Remove Screw F
- Disassemble HOUSING & LENS ASSY PRINTED 9
- Remove Screws G1, G2
- Disassemble LIGHT GUIDE ASSY 10
- Remove Screws H1 - H3
- Disassemble COVER MOLDED SOS 8
- Remove Screws J1 - J6
- Disassemble DEVIATOR ASSY 3

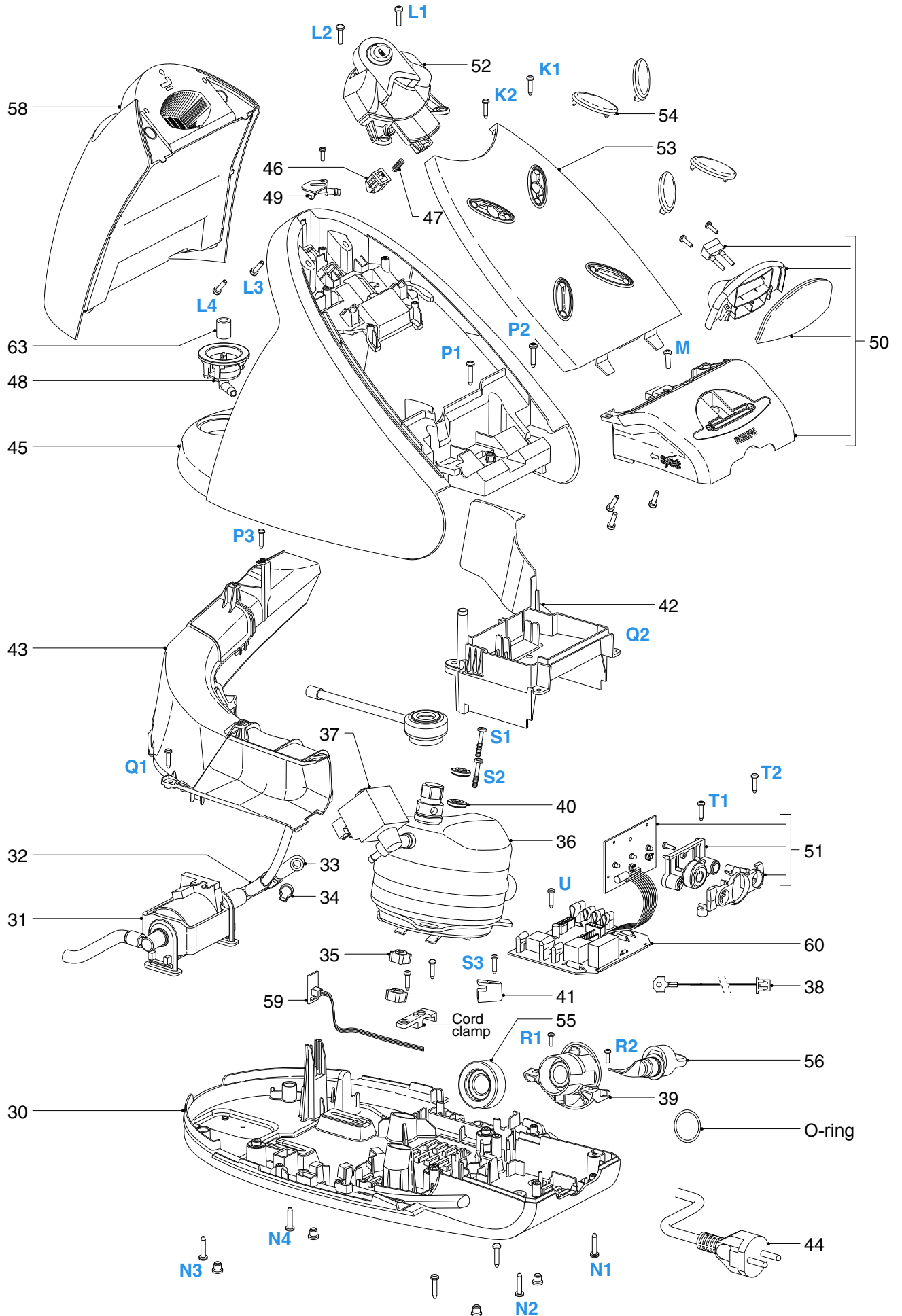
| Pos | Service code | Description |
|-----|----------------|--------------------------------------|
| 1 | 4239 021 78131 | Soleplate mounted assy 230 V / 800 W |
| 2 | 4239 021 61471 | Thermistor assy Iron |
| 3 | 4239 021 61523 | Deviator assy |
| 4 | 4239 015 59151 | Braided rubber hose iron |
| 5 | 4239 010 11991 | Hose clip (ID=8.7) |
| 6 | 4239 010 10281 | Hose clip-Braided rubber hose |
| 7 | 4239 015 70153 | Ryton ring |
| 8 | 4239 026 52531 | Cover molded SOS |
| 9 | 4239 021 75601 | Housing & Lens assy printed |
| 10 | 4239 021 61772 | Light Guide assy |
| 11 | 4239 021 75621 | Deco_Plate & top Cover assy printed |
| 12 | 4239 021 61561 | Micro-switch assy |
| 13 | 4239 021 75641 | SOS knob sprayed painted |
| 14 | 4239 026 42481 | SOS lever molded |
| 15 | 4239 021 75651 | Hose cord mounted assy SOS |
| 16 | 4239 021 75911 | Backplate assy |
| 17 | 4239 026 52591 | Inlay molded |
| 18 | 4239 026 42521 | SOS knob cover |
| 19 | 4239 026 52601 | Trigger molded |
| 20 | 4239 014 54961 | Trigger spring |
| 21 | 4239 026 42551 | Backplate screw cap |

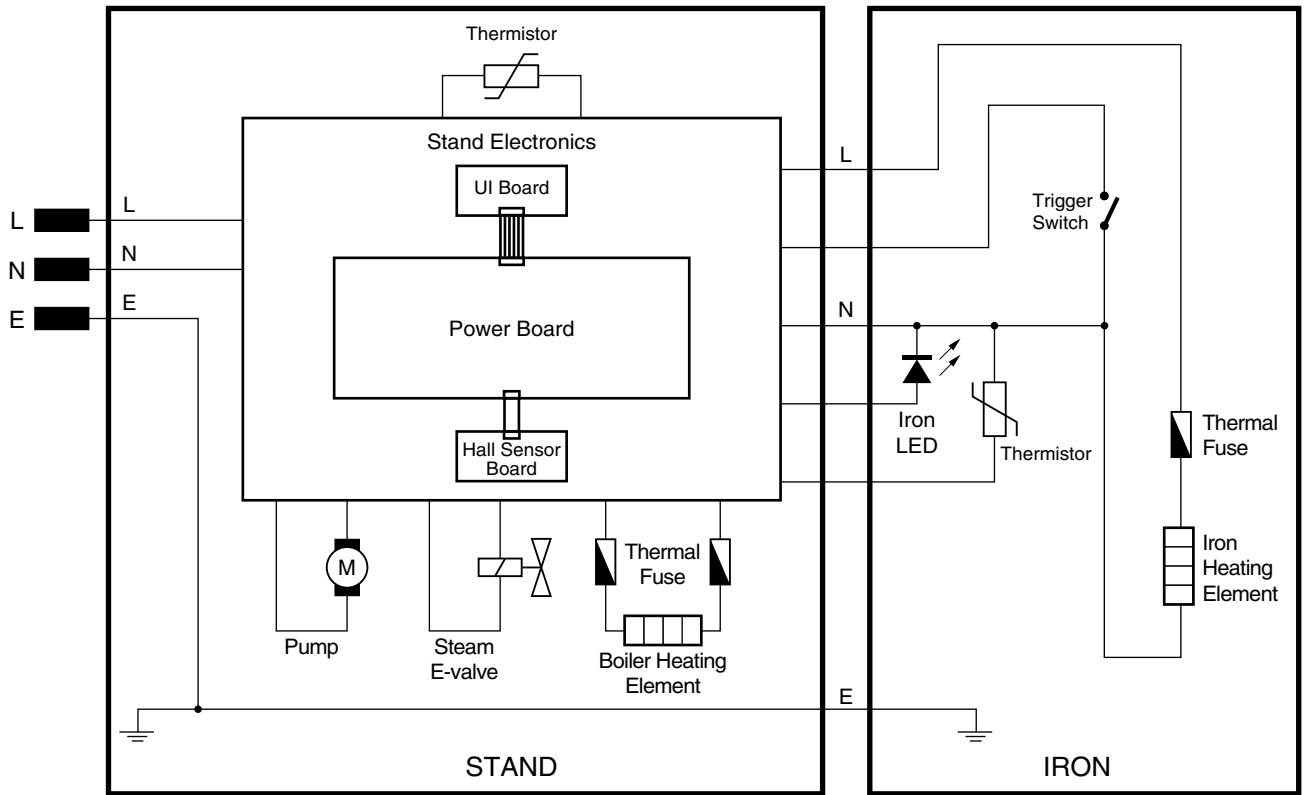


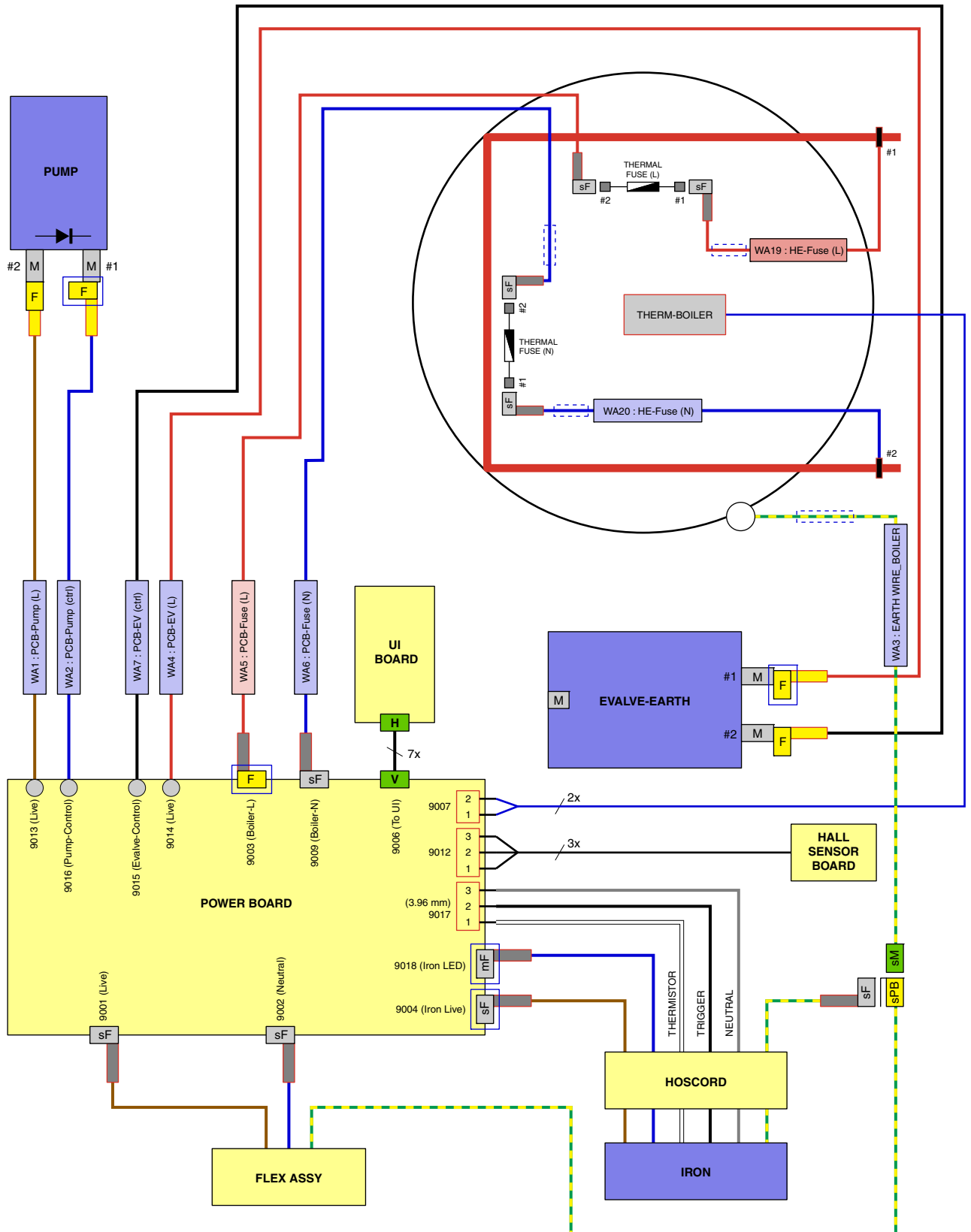
- WATER TANK PRINTED
ASSY 58**
- TRAY MOLDED 53**
- DISPLAY COVER PRINTED
ASSY 50**
- STAND TOP MOLDED 45**
- POWER CORD STORAGE
MOLDED 42**
- HOSE CORD STORAGE
COMPARTMENT ASSY 43**
- RINSE CAP ASSY 56**
- RINSE HOUSING
PRINTED 39**
- BOILER ASSY 36**
- BUTTON PANEL ASSY 51**
- POWER BOARD PCB
ASSY 60**

- Remove WATER TANK PRINTED ASSY 58
- Remove TRAY RUBBER CAP 54
- Remove Screws K1, K2
- Disassemble TRAY MOLDED 53
- Remove Screws L1 - L4
- Remove Screw M
- Remove Screws N1 - N4
- Disassemble DISPLAY COVER PRINTED ASSY 50
- Remove Screws P1 – P3
- Disassemble STAND TOP MOLDED 45
- Remove Screws Q1, Q2
- Disassemble POWER CORD STORAGE MOLDED 42
- Disassemble HOSE CORD STORAGE COMPARTMENT ASSY 43
- Remove RINSE CAP ASSY 56
- Remove Screws R1, R2
- Disassemble RINSE HOUSING PRINTED 39
- Remove Screws S1, S2, S3
- Disassemble BOILER SUPPORT BRACKET MOLDED 41
- Disassemble BOILER ASSY 36
- Remove Screws T1, T2
- Disassemble BUTTON PANEL ASSY 51
- Remove Screw U
- Disassemble POWER BOARD PCB ASSY 60



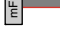
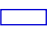






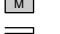

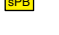
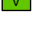
| Pos | Service code | Description |
|-----|----------------|------------------------------------|
| 30 | 4239 021 61591 | Stand bottom assy |
| 31 | 4239 021 61601 | Pump assy |
| 32 | 4239 026 42081 | De-air valve |
| 33 | 4239 015 59201 | Braided rubber hose boiler |
| 34 | 4239 010 10261 | Inox clamp |
| 35 | 4239 026 32181 | Spacer Bottom molded |
| 36 | 4239 021 61611 | Boiler assy |
| 37 | 2922 021 98946 | Electrovalve |
| 38 | 4239 021 61812 | Thermistor assy Boiler |
| 39 | 4239 021 76221 | Rinse Housing printed |
| 40 | 4239 026 31641 | Spacer top molded |
| 41 | 4239 026 42581 | Boiler support bracket molded |
| 42 | 4239 026 42591 | Power cord storage molded |
| 43 | 4239 021 61621 | Hose cord storage compartment assy |
| 44 | 4239 000 11581 | Cord set EU |
| 45 | 4239 026 52621 | Stand top molded |
| 46 | 4239 026 52631 | Tank Catch molded |
| 47 | 4239 014 54982 | Tank Catch Spring |
| 48 | 4239 021 72361 | Inlet coupling plate welded |
| 49 | 4239 026 52751 | De-air coupling molded |
| 50 | 4239 021 76611 | Display cover printed assy |
| 51 | 4239 021 75691 | Button panel assy |
| 52 | 4239 021 75711 | Front Bracket assy |
| 53 | 4239 026 42742 | Tray molded |
| 54 | 4239 015 60231 | Tray rubber cap |
| 55 | 4239 015 60241 | Rinse Rubber Bush |
| 56 | 4239 021 75721 | Rinse cap assy |
| 58 | 4239 021 75731 | Water tank printed assy |
| 59 | 4239 021 61723 | Hall sensor PCBA assy |
| 60 | 4239 021 77331 | Power Board PCB assy |
| 63 | 4239 015 60221 | Tube seal |







LEGEND:

- | | | | |
|---|--|---|--|
|  | Female Push-on 4.8 x 0.8 mm L-shape Connector |  | Sleeve - Fiber Glass |
|  | Female Push-on 5.2 x 0.8 mm L-shape Connector |  | Insulated Tab - Silicon Rubber |
|  | Male Tab Terminal 4.8 x 0.8 mm |  | Ring Terminal M4.3 |
|  | Female Push-on L-shape Connector 6.35 x 0.8 mm |  | Splice 6.0 mm |
|  | Female Push-on Connector 6.35 x 0.8 mm |  | Directly soldered on PCB |
|  | Male Tab Terminal 6.35 x 0.8 mm |  | 7-pin Board-in Connector 2 mm (horizontal) |
|  | Piggy Back Push-on Connector 4.8 x 0.8 mm |  | 7-pin Connector 2 mm (vertical) |

- Due to the high wattage of the iron, only the specified cord set must be used.
- Should damage be observed on the **HOSE CORD MOUNTED ASSY 15** or **CORD SET 44**, they must be replaced. Continued usage is not allowed.
- When replacing the **MICROSWITCH ASSY 12**, please dress the 2 attached wires such that they are free of tension. Pulling force on the wires may affect the steam triggering.
- To avoid damage to the sealing & components of the **BOILER ASSY 36**, **NEVER** clean the boiler assy with vinegar, descaling agent or other corrosive chemicals.
- When replacing **ELECTROVALVE 37** or **PUMP ASSY 31**, please be reminded to apply loctite at the joints for good sealing.
- After the product has been repaired, it should function properly and has to meet the safety requirements & legal regulations as laid down & officially established at this moment.
- The following tests are common checks that are conducted on a repaired product before it is returned to the consumer.

1. Soleplate temperature

Check that soleplate temperature is within below requirement.

Measure the temperature of the soleplate after the iron has reached steady state i.e connected to the mains for at least 15 minutes. The table below shows the temperature requirement.

| | | | |
|-------------------------------|---------|------------------------|--|
| Soleplate temperature (Deg C) | | Materials, for example | |
| Minimum | Maximum | | |
| 120 | 143 | All fabric types | |

2. Leakage current

Check that leakage current is within IEC requirement.

Measure leakage current between LIVE/NEUTRAL & EARTH.

IEC requirement is that at 230 V supply, the EARTH leakage current must be less than 0.75 mA.

3. Water leakage / Functionality

Check that there is no water leakage from any part of the product during operation.

Check that the functionality of the product (product dependent) eg. steaming, variable steam, SOS, ASO etc is working properly.

4. Loose part

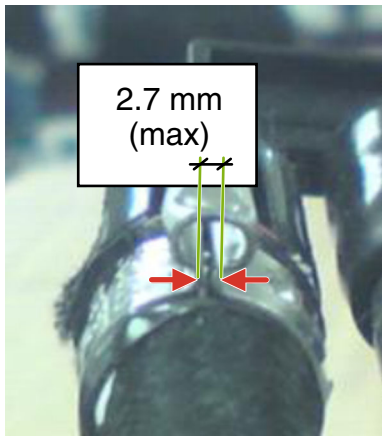
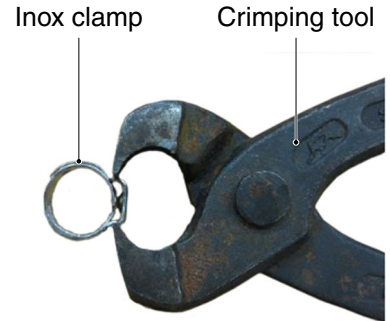
Check that there are no loose parts eg. extra screw in the product that can cause short-circuit or product malfunction.

5. Crimping INOX CLAMP 34

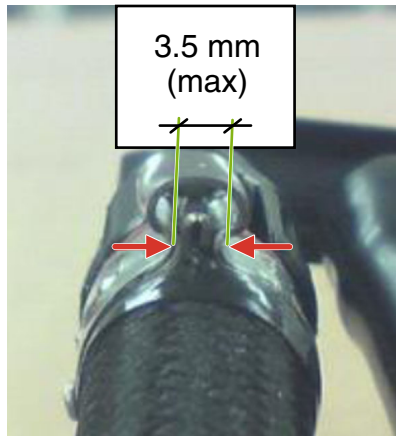
When exchanging BOILER ASSY 36 or DE-AIR VALVE 32 or BRAIDED RUBBER HOSE BOILER 33, it is necessary to replace the INOX CLAMP 34. Below instructions ensure that the inox clamp is crimped correctly.



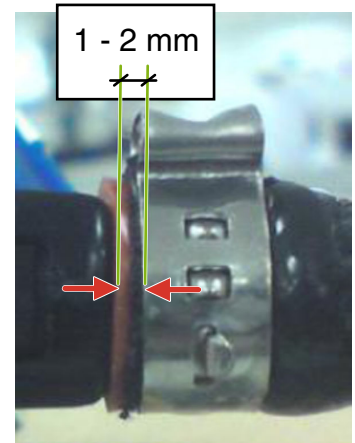
Knipex Crimping tool



Direct crimp form



Fold in crimp



Distance from edge of crimp to rubber hose

CAUTION: When crimping on plastic part like DE-AIR VALVE, avoid over crimping which may lead to plastic part crack.

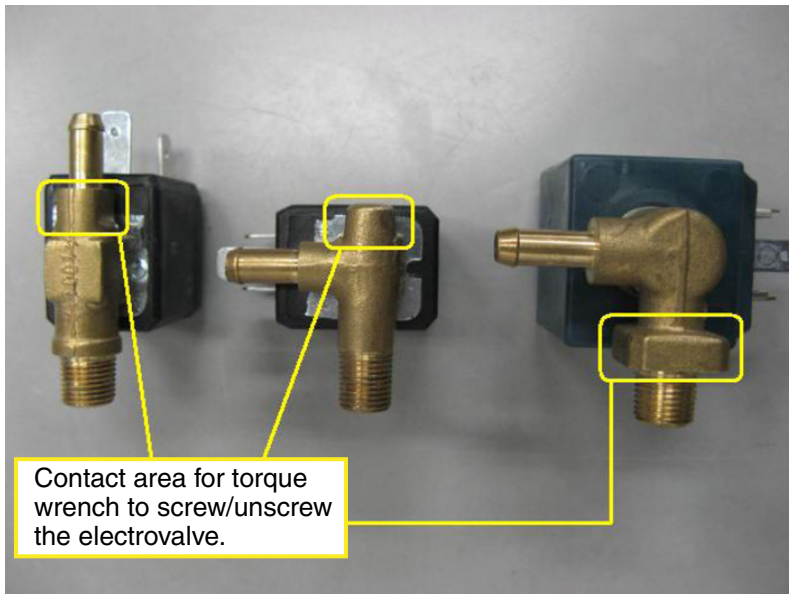
6. Replacing ELECTROVALVE 37

To prevent damage to the electrovalve during service activity, please observe below precautions during disassembly & reassembly.

Tools required: Torque wrench (set to 6 kgf)



CAUTION #1: The torque wrench engagement is allowed ONLY at the yellow box locations in below picture.



CAUTION #2: Ensure torque wrench jaw does not contact the solenoid body.

