

Service
Service
Service



Philips Consumer Lifestyle

Service Manual

PRODUCT INFORMATION

Fast & powerful crease removal

- Soleplate: SteamGlide
- OptimalTemp
- Continuous steam output: 120 g/min
- Steam boost: 270 g/min
- Vertical steam
- Steam pressure: Up to 6.0 bar
- Steam tip
- Power: 2400 W

Easy to use

- Water tank capacity: 1500 ml
- Filling and emptying water: Detachable water tank
Extra large opening door
- Refill any time
- Heat-up time: 2 min
- Auto Off
- Hose storage: Hose storage compartment
- Cord storage: Cord storage compartment
- Power cord length: 1.8 m
- Cord freedom (swivel): 180 degree cord freedom
- Hose length: 1.7 m
- Safe for all fabrics: Even for delicates like silks
- Carry Lock

Sustainability

- ECO setting: 20% energy reduction

Calc management

- Suitable for tap water
- Calc clean solution: Easy De-calc

EMF & Service Information

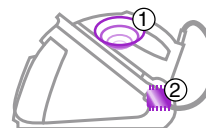
- This product meets the requirements regarding interference suppression on radio & TV.
- After the product has been repaired, it should function properly & has to meet the safety requirements as officially laid down at this moment.

TECHNICAL INFORMATION

| | |
|--------------------|-------------------------------|
| Voltage | : 220 - 240 V |
| Frequency | : 50 - 60 Hz |
| Power | - Iron : 800 W at 230 V |
| | - Boiler : 1370 W at 230 V |
| Product Dimensions | : 28.3 x 26.3 x 42.4 cm |
| Weight | : Weight of iron: 1.2 kg |
| | Weight of iron + base: 5.4 kg |

Optimal Temp technology

- Delivers always perfect combination of steam and temperature
- 100% easy to use, no adjustment required
- 100% safe on all ironable garments
- 100% effective on all fabrics, no other iron is faster
- Tested and approved by independent textile experts



Always the perfect setting thanks to:
1 - Cylonic steam chamber
2 - Advanced Smart control processor

Easy De-calc

Easy De-calc cap allows hassle free & effective scale removal to extend the life of the steam generator.

Carry Lock

Lock your iron securely & carry your appliance easy.

BACKPLATE ASSY 16

SOS KNOB 13

INLAY MOLDED 17

MICRO-SWITCH ASSY 12

HOSE CORD MOUNTED
ASSY SOS 15HOUSING & LENS
ASSY PRINTED 9

LIGHT GUIDE ASSY 10

COVER MOLDED SOS 8

DEVIATOR ASSY 3

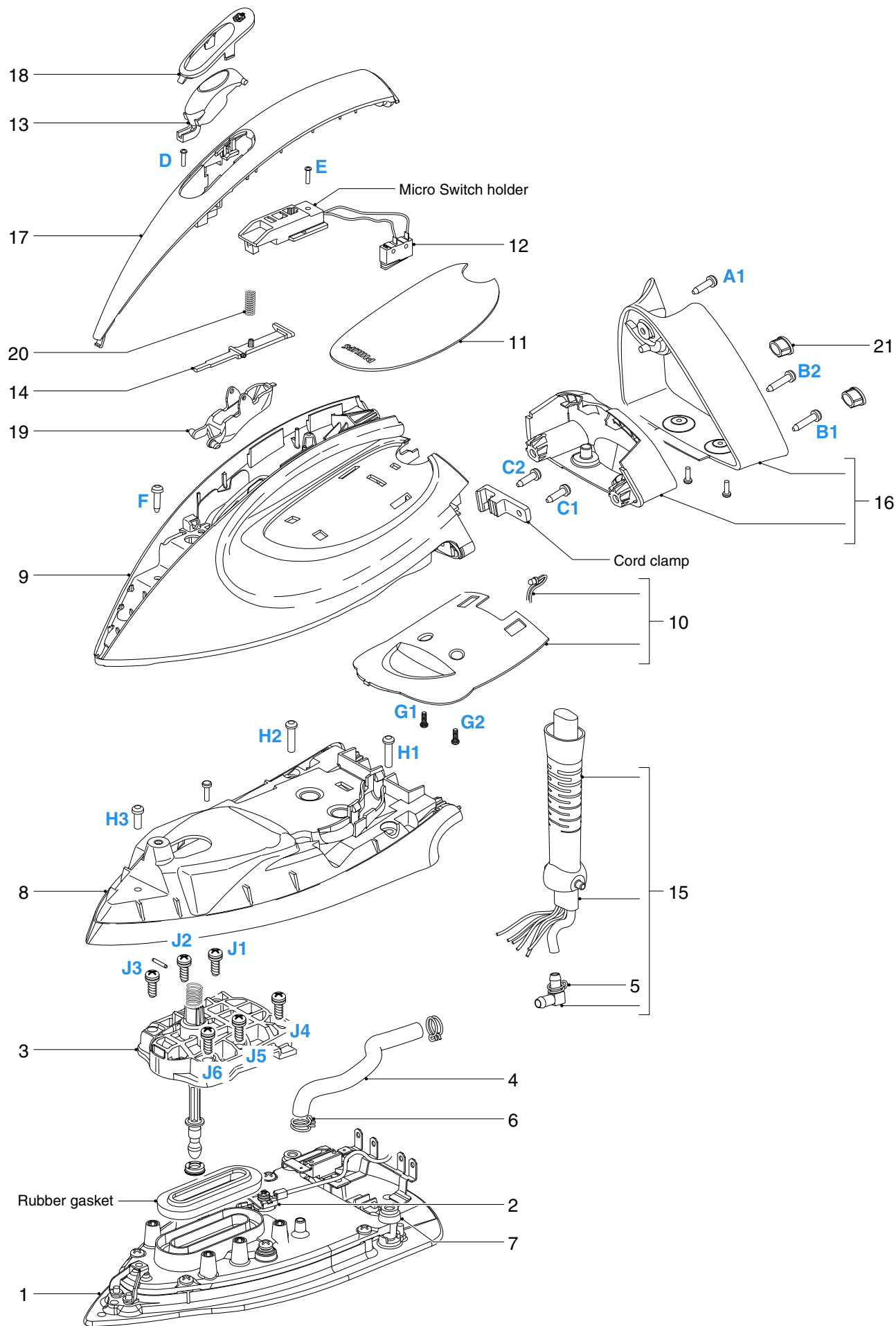
SOLEPLATE MOUNTED
ASSY 1

Remove Screw A
 Disassemble BACKPLATE SCREW PLATE 21
 Remove Screws B1, B2
 Disassemble BACKPLATE ASSY 16
 Remove Screws C1, C2
 Remove Cord clamp
 Disassemble SOS KNOB COVER 18

*Tip for disassembling SOS KNOB COVER 18:
 Carefully insert a sharp object into the gap at the side & slowly
 lift up the part*

Disassemble SOS KNOB 13
 Remove Screw D
 Disassemble INLAY MOLDED 17
 Remove Screw E
 Disassemble MICRO-SWITCH ASSY 12
 Remove Screw F
 Disassemble HOUSING & LENS ASSY PRINTED 9
 Remove Screws G1, G2
 Disassemble LIGHT GUIDE ASSY 10
 Remove Screws H1 - H3
 Disassemble COVER MOLDED SOS 8
 Remove Screws J1 - J6
 Disassemble DEVIATOR ASSY 3

| Pos | Service code | Description |
|-----|----------------|--------------------------------------|
| 1 | 4239 021 66252 | Soleplate mounted assy 230 V / 800 W |
| 2 | 4239 021 61471 | Thermistor assy Iron |
| 3 | 4239 021 61523 | Deviator assy |
| 4 | 4239 015 59151 | Braided rubber hose iron |
| 5 | 4239 010 11991 | Hose clip (ID=8.7) |
| 6 | 4239 010 10281 | Hose clip-Braided rubber hose |
| 7 | 4239 015 70153 | Ryton ring |
| 8 | 4239 021 67662 | Cover SOS spray painted |
| 9 | 4239 021 68303 | Housing & Lens assy printed |
| 10 | 4239 021 61772 | Light Guide assy |
| 11 | 4239 021 67692 | Deco_Plate & Top Cover assy Printed |
| 12 | 4239 021 61561 | Micro-switch assy |
| 13 | 4239 021 67711 | SOS knob sprayed painted |
| 14 | 4239 026 42481 | SOS lever molded |
| 15 | 4239 021 67721 | Hose cord mounted assy SOS |
| 16 | 4239 021 67741 | Backplate assy |
| 17 | 4239 021 67752 | Inlay spray painted |
| 18 | 4239 026 42521 | SOS knob cover |
| 19 | 4239 026 47861 | Trigger molded |
| 20 | 4239 014 54961 | Trigger spring |
| 21 | 4239 026 42551 | Backplate screw cap |



**WATER TANK PRINTED
ASSY 58**

TRAY MOLDED 53

**DISPLAY COVER PRINTED
ASSY 50**

STAND TOP MOLDED 45

**POWER CORD STORAGE
MOLDED 42**

**HOSE CORD STORAGE
COMPARTMENT ASSY 43**

RINSE CAP ASSY 56

**RINSE HOUSING
PRINTED 39**

BOILER ASSY 36

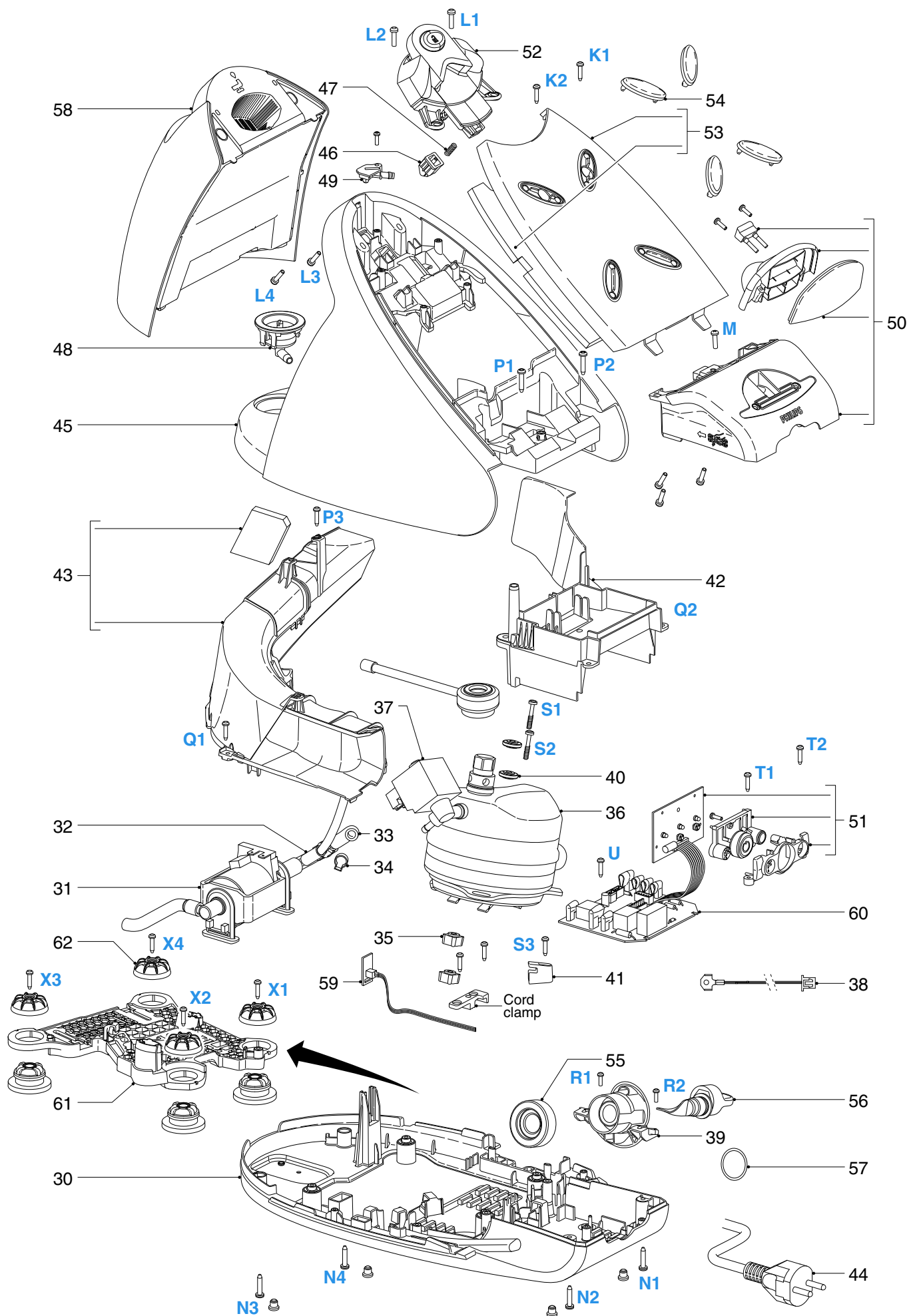
BUTTON PANEL ASSY 51

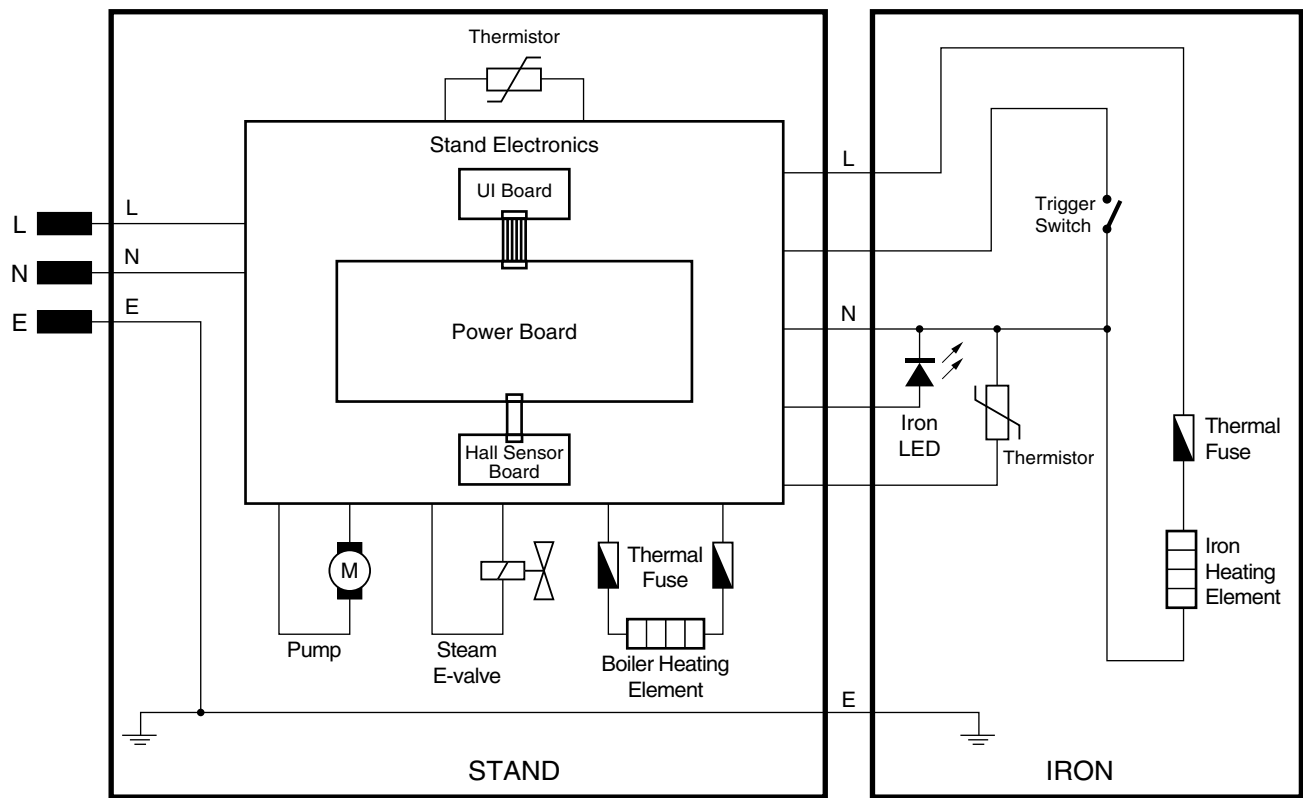
**POWER BOARD PCB
ASSY 60**

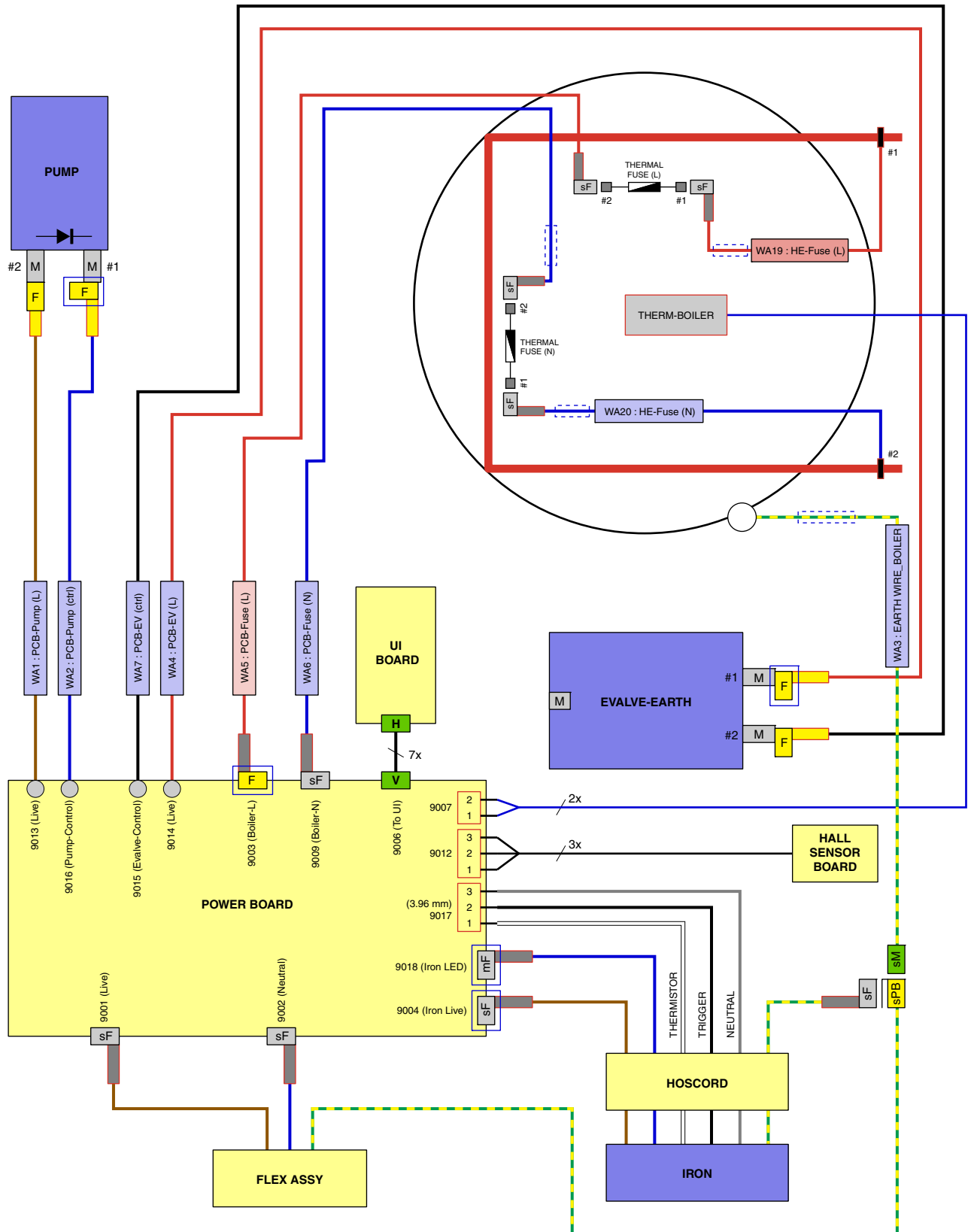
**FLOATING PLATFORM
ASSY 61**

| | |
|-------------|--|
| Remove | WATER TANK PRINTED ASSY 58 |
| Remove | TRAY RUBBER CAP 54 |
| Remove | Screws K1, K2 |
| Disassemble | TRAY MOLDED 53 |
| Remove | Screws L1 - L4 |
| Remove | Screw M |
| Remove | Screws N1 - N4 |
| Disassemble | DISPLAY COVER PRINTED ASSY 50 |
| Remove | Screws P1 – P3 |
| Disassemble | STAND TOP MOLDED 45 |
| Remove | Screws Q1, Q2 |
| Disassemble | POWER CORD STORAGE MOLDED 42 |
| Disassemble | HOSE CORD STORAGE COMPARTMENT ASSY 43 |
| Remove | RINSE CAP ASSY 56 |
| Remove | Screws R1, R2 |
| Disassemble | RINSE HOUSING PRINTED 39 |
| Remove | Screws S1, S2, S3 |
| Disassemble | BOILER SUPPORT BRACKET MOLDED 41 |
| Disassemble | BOILER ASSY 36 |
| Remove | Screws T1, T2 |
| Disassemble | BUTTON PANEL ASSY 51 |
| Remove | Screw U |
| Disassemble | POWER BOARD PCB ASSY 60 |
| Remove | Screws X1 - X4 |
| Disassemble | PLASTIC CAP MOLDED 62 |
| Disassemble | FLOATING PLATFORM ASSY 61 |

| Pos | Service code | Description |
|-----|----------------|------------------------------------|
| 30 | 4239 021 68322 | Stand bottom assy |
| 31 | 4239 021 68311 | Pump assy |
| 32 | 4239 026 42081 | De-air valve |
| 33 | 4239 015 59201 | Braided rubber hose boiler |
| 34 | 4239 010 10261 | Inox clamp |
| 35 | 4239 026 32181 | Spacer Bottom molded |
| 36 | 4239 021 68331 | Boiler assy |
| 37 | 4239 017 12802 | Electrovalve |
| 38 | 4239 021 61812 | Thermistor assy Boiler |
| 39 | 4239 021 68341 | Rinse Housing Printed |
| 40 | 4239 026 31641 | Spacer top molded |
| 41 | 4239 026 42581 | Boiler support bracket molded |
| 42 | 4239 026 47671 | Power cord storage molded |
| 43 | 4239 021 67521 | Hose cord storage compartment assy |
| 44 | 2422 070 98357 | Cord set EU |
| 45 | 4239 021 67771 | Stand top printed |
| 46 | 4239 026 44771 | Tank Catch molded |
| 47 | 4239 014 54982 | Tank Catch Spring |
| 48 | 4239 021 63562 | Inlet coupling plate welded |
| 49 | 4239 026 44801 | De-air coupling molded |
| 50 | 4239 021 67543 | Display cover printed assy |
| 51 | 4239 021 69521 | Button panel assy |
| 52 | 4239 021 67831 | Front lock assy |
| 53 | 4239 021 68442 | Tray assy |
| 54 | 4239 015 59221 | Tray rubber cap |
| 55 | 4239 015 59531 | Rinse Rubber Bush |
| 56 | 4239 021 67851 | Rinse cap assy |
| 57 | 4239 015 58201 | O-ring |
| 58 | 4239 021 67872 | Water tank printed assy |
| 59 | 4239 021 61723 | Hall sensor PCBA assy |
| 60 | 4239 021 68572 | Power Board PCB assy |
| 61 | 4239 021 68812 | Floating platform assy |
| 62 | 4239 026 47651 | Plastic cap molded |







LEGEND:

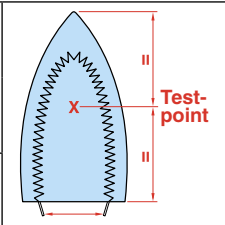
- | | | | |
|--|--|--|--|
| | Female Push-on 4.8 x 0.8 mm L-shape Connector | | Sleeve - Fiber Glass |
| | Female Push-on 5.2 x 0.8 mm L-shape Connector | | Insulated Tab - Silicon Rubber |
| | Male Tab Terminal 4.8 x 0.8 mm | | Ring Terminal M4.3 |
| | Female Push-on L-shape Connector 6.35 x 0.8 mm | | Splice 6.0 mm |
| | Male Tab Terminal 6.35 x 0.8 mm | | Directly soldered on PCB |
| | Piggy Back Push-on Connector 4.8 x 0.8 mm | | 7-pin Board-in Connector 2 mm (horizontal) |
| | | | 7-pin Connector 2 mm (vertical) |

- Due to the high wattage of the iron, only the specified cord set must be used.
- Should damage be observed on the **HOSE CORD MOUNTED ASSY 15** or **CORD SET 44**, they must be replaced. Continued usage is not allowed.
- When replacing the **MICROSWITCH ASSY 12**, please dress the 2 attached wires such that they are free of tension. Pulling force on the wires may affect the steam triggering.
- To avoid damage to the sealing & components of the **BOILER ASSY 36**, **NEVER** clean the boiler assy with vinegar, descaling agent or other corrosive chemicals.
- When replacing **ELECTROVALVE 37** or **PUMP ASSY 31**, please be reminded to apply loctite at the joints for good sealing.
- After the product has been repaired, it should function properly and has to meet the safety requirements & legal regulations as laid down & officially established at this moment.
- The following tests are common checks that are conducted on a repaired product before it is returned to the consumer.

1. Soleplate temperature

Check that soleplate temperature is within below requirement.

Measure the temperature of the soleplate after the iron has reached steady state i.e connected to the mains for at least 15 minutes. The table below shows the temperature requirement.

| Soleplate temperature (Deg C) | | Materials, for example |  |
|-------------------------------|---------|------------------------|---|
| Minimum | Maximum | | |
| 120 | 143 | All fabric types | |

2. Leakage current

Check that leakage current is within IEC requirement.

Measure leakage current between LIVE/NEUTRAL & EARTH.

IEC requirement is that at 230 V supply, the EARTH leakage current must be less than 0.75 mA.

3. Water leakage / Functionality

Check that there is no water leakage from any part of the product during operation.

Check that the functionality of the product (product dependent) eg. steaming, variable steam, SOS, ASO etc is working properly.

4. Loose part

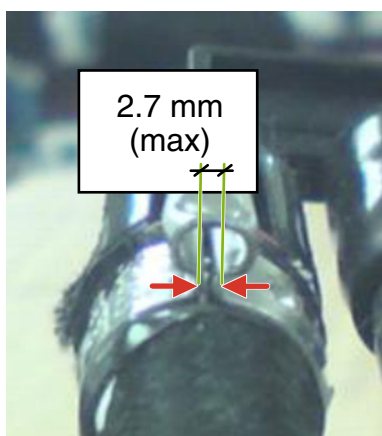
Check that there are no loose parts eg. extra screw in the product that can cause short-circuit or product malfunction.

5. Crimping INOX CLAMP 34

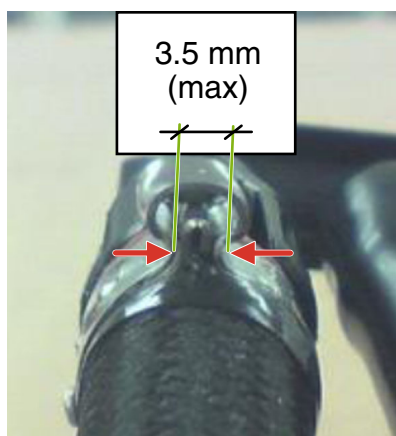
When exchanging **BOILER ASSY 36** or **DE-AIR VALVE 32** or **BRAIDED RUBBER HOSE BOILER 33**, it is necessary to replace the **INOX CLAMP 34**. Below instructions ensure that the inox clamp is crimped correctly.



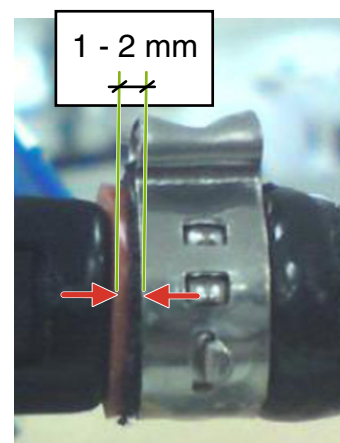
Knipex Crimping tool



Direct crimp form



Fold in crimp



Distance from edge of crimp to rubber hose

CAUTION: When crimping on plastic part like **DE-AIR VALVE**, avoid over crimping which may lead to plastic part crack.

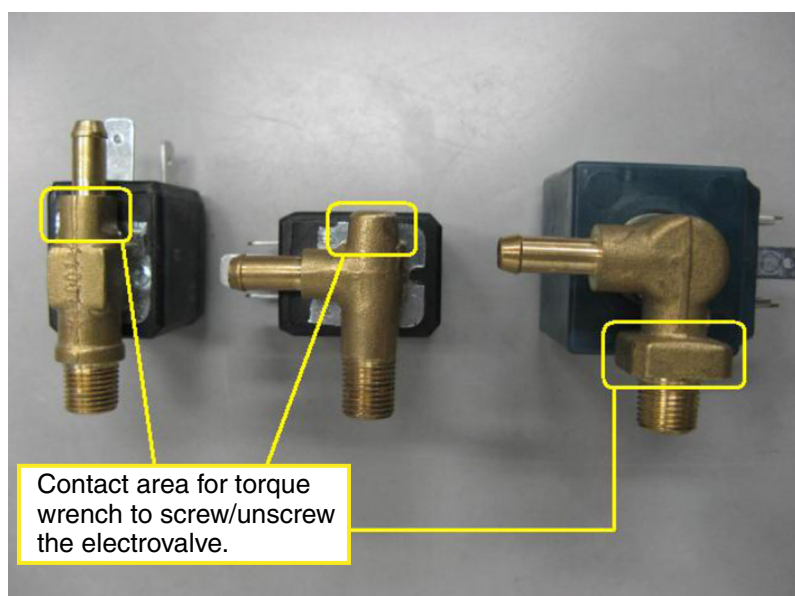
6. Replacing ELECTROVALVE 37

To prevent damage to the electrovalve during service activity, please observe below precautions during disassembly & reassembly.

Tools required: Torque wrench (set to 6kgf)



CAUTION #1: The torque wrench engagement is allowed **ONLY** at the yellow box locations in below picture.



CAUTION #2: Ensure torque wrench jaw does not contact the solenoid body.

