



Philips Consumer Lifestyle

Service Manual

PRODUCT INFORMATION

Fast & powerful crease removal

- Soleplate: SteamGlide
- OptimalTemp
- Continuous steam output: 120 g/min
- Steam boost: 290 g/min
- Vertical steam
- Steam pressure: Up to 6.0 bar
- Steam tip
- Power: 2400 W

Easy to use

- Water tank capacity: 1500 ml
- Filling and emptying water: Detachable water tank
Extra large opening door
- Refill any time
- Heat-up time: 2 min
- Auto Off
- Hose storage: Hose storage compartment
- Cord storage: Cord storage compartment
- Power cord length: 1.8 m
- Cord freedom (swivel): 180 degree cord freedom
- Hose length: 1.7 m
- Safe for all fabrics: Even for delicates like silks
- Carry Lock

Sustainability

- ECO setting: 20% energy reduction

Calc management

- Suitable for tap water
- Calc clean solution: Easy De-calc

EMF & Service Information

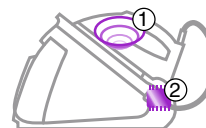
- This product meets the requirements regarding interference suppression on radio & TV.
- After the product has been repaired, it should function properly & has to meet the safety requirements as officially laid down at this moment.

TECHNICAL INFORMATION

Voltage	: 220 - 240 V
Frequency	: 50 - 60 Hz
Power	- Iron : 800 W at 230 V
	- Boiler : 1370 W at 230 V
Product Dimensions	: 28.3 x 26.3 x 42.4 cm
Weight	: Weight of iron: 1.2 kg
	Weight of iron + base: 5.4 kg

Optimal Temp technology

- Delivers always perfect combination of steam and temperature
- 100% easy to use, no adjustment required
- 100% safe on all ironable garments
- 100% effective on all fabrics, no other iron is faster
- Tested and approved by independent textile experts



Always the perfect setting thanks to:
1 - Cylonic steam chamber
2 - Advanced Smart control processor

Easy De-calc

Easy De-calc cap allows hassle free & effective scale removal to extend the life of the steam generator.

Carry Lock

Lock your iron securely & carry your appliance easy.

BACKPLATE ASSY 16

SOS KNOB 13

INLAY MOLDED 17

MICRO-SWITCH ASSY 12

HOSE CORD MOUNTED
ASSY SOS 15HOUSING & LENS
ASSY PRINTED 9

LIGHT GUIDE ASSY 10

COVER MOLDED SOS 8

DEVIATOR ASSY 3

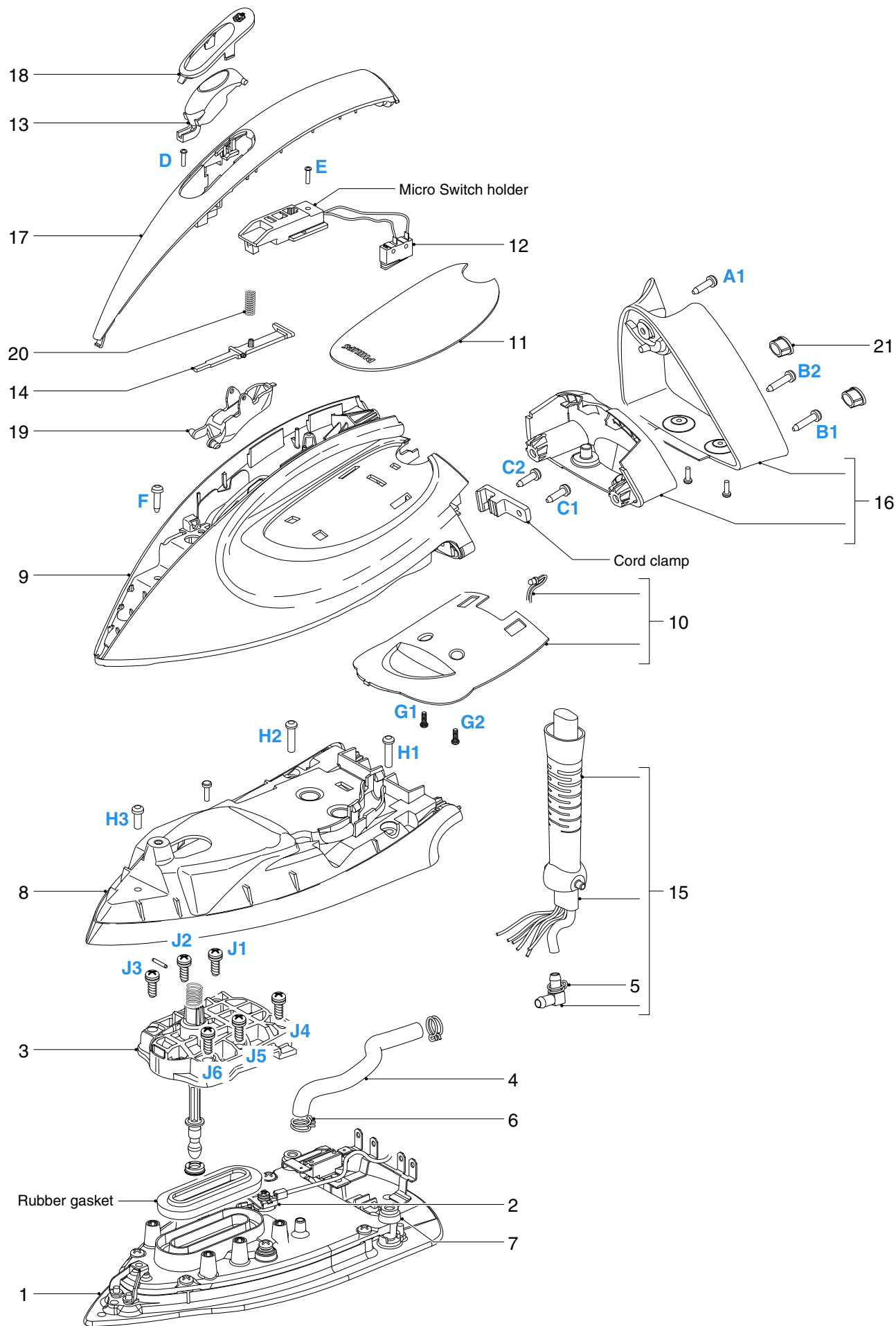
SOLEPLATE MOUNTED
ASSY 1

Remove Screw A
 Disassemble BACKPLATE SCREW PLATE 21
 Remove Screws B1, B2
 Disassemble BACKPLATE ASSY 16
 Remove Screws C1, C2
 Remove Cord clamp
 Disassemble SOS KNOB COVER 18

*Tip for disassembling SOS KNOB COVER 18:
 Carefully insert a sharp object into the gap at the side & slowly
 lift up the part*

Disassemble SOS KNOB 13
 Remove Screw D
 Disassemble INLAY MOLDED 17
 Remove Screw E
 Disassemble MICRO-SWITCH ASSY 12
 Remove Screw F
 Disassemble HOUSING & LENS ASSY PRINTED 9
 Remove Screws G1, G2
 Disassemble LIGHT GUIDE ASSY 10
 Remove Screws H1 - H3
 Disassemble COVER MOLDED SOS 8
 Remove Screws J1 - J6
 Disassemble DEVIATOR ASSY 3

Pos	Service code	Description
1	4239 021 66252	Soleplate mounted assy 230 V / 800 W
2	4239 021 61471	Thermistor assy Iron
3	4239 021 61523	Deviator assy
4	4239 015 59151	Braided rubber hose iron
5	4239 010 11991	Hose clip (ID=8.7)
6	4239 010 10281	Hose clip-Braided rubber hose
7	4239 015 70153	Ryton ring
8	4239 021 67421	Cover SOS spray painted
9	4239 021 67433	Housing & Lens assy printed
10	4239 021 61772	Light Guide assy
11	4239 021 67452	Deco_Plate & Top Cover assy Printed
12	4239 021 61561	Micro-switch assy
13	4239 021 67471	SOS knob sprayed painted
14	4239 026 42481	SOS lever molded
15	4239 021 67481	Hose cord mounted assy SOS
16	4239 021 67501	Backplate assy
17	4239 021 67511	Inlay spray painted
18	4239 026 42521	SOS knob cover
19	4239 026 47631	Trigger molded
20	4239 014 54961	Trigger spring
21	4239 026 42551	Backplate screw cap



**WATER TANK PRINTED
ASSY 58**

TRAY MOLDED 53

**DISPLAY COVER PRINTED
ASSY 50**

STAND TOP MOLDED 45

**POWER CORD STORAGE
MOLDED 42**

**HOSE CORD STORAGE
COMPARTMENT ASSY 43**

RINSE CAP ASSY 56

**RINSE HOUSING
PRINTED 39**

BOILER ASSY 36

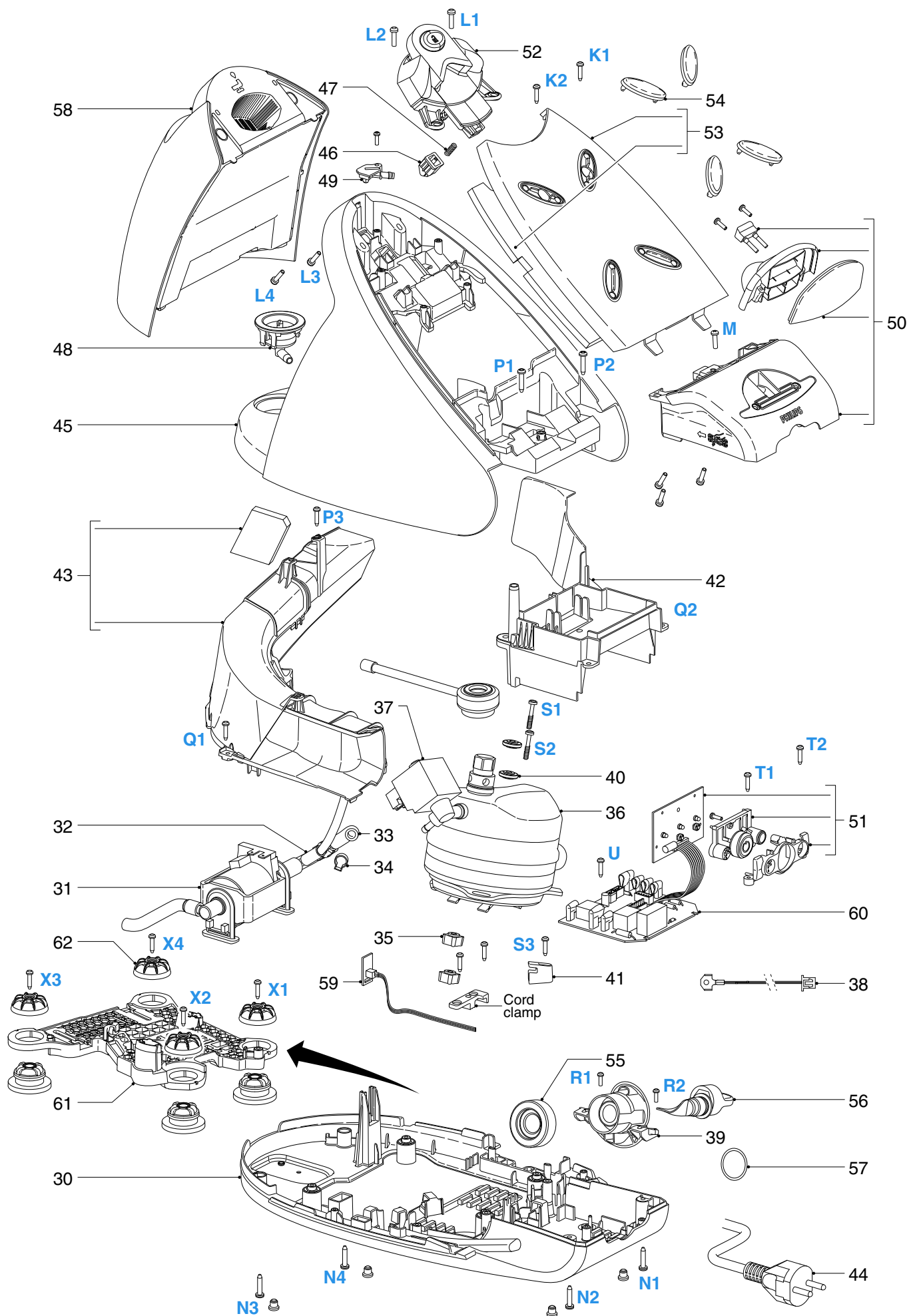
BUTTON PANEL ASSY 51

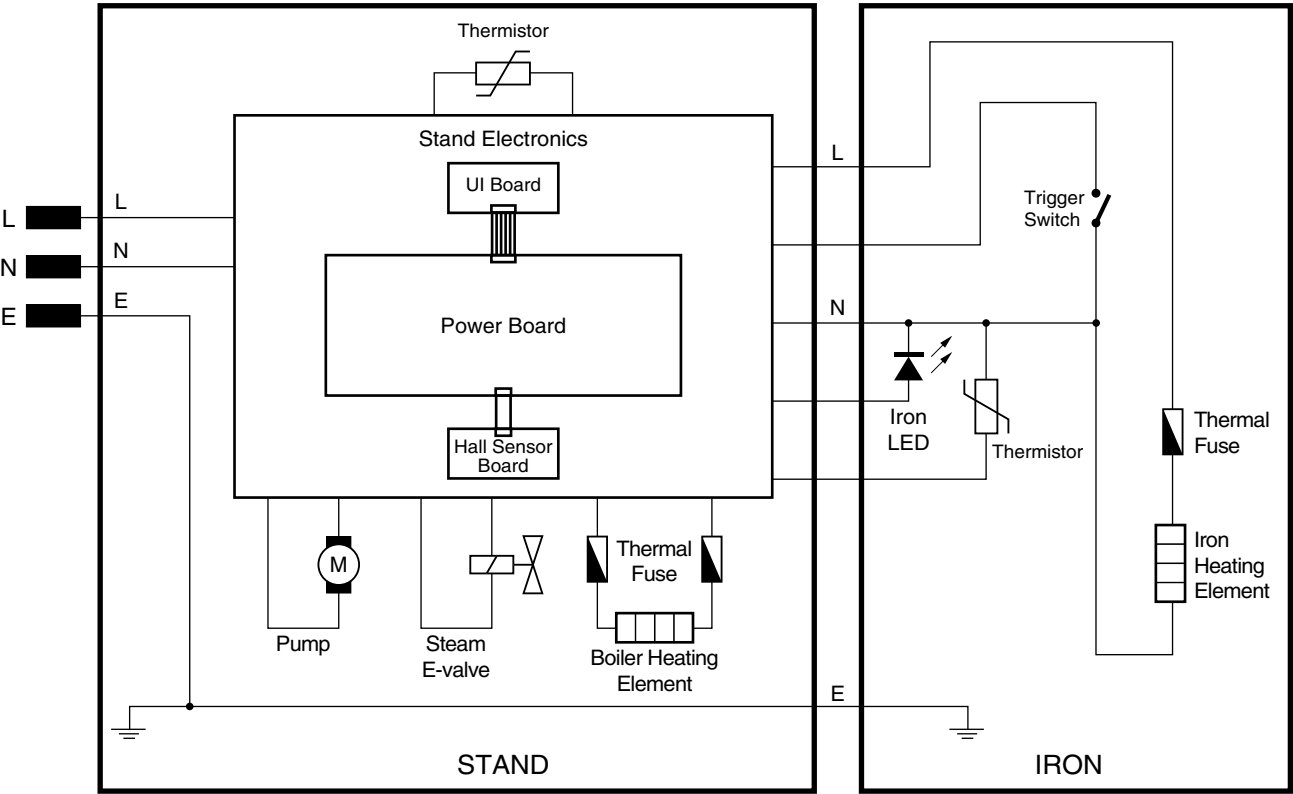
**POWER BOARD PCB
ASSY 60**

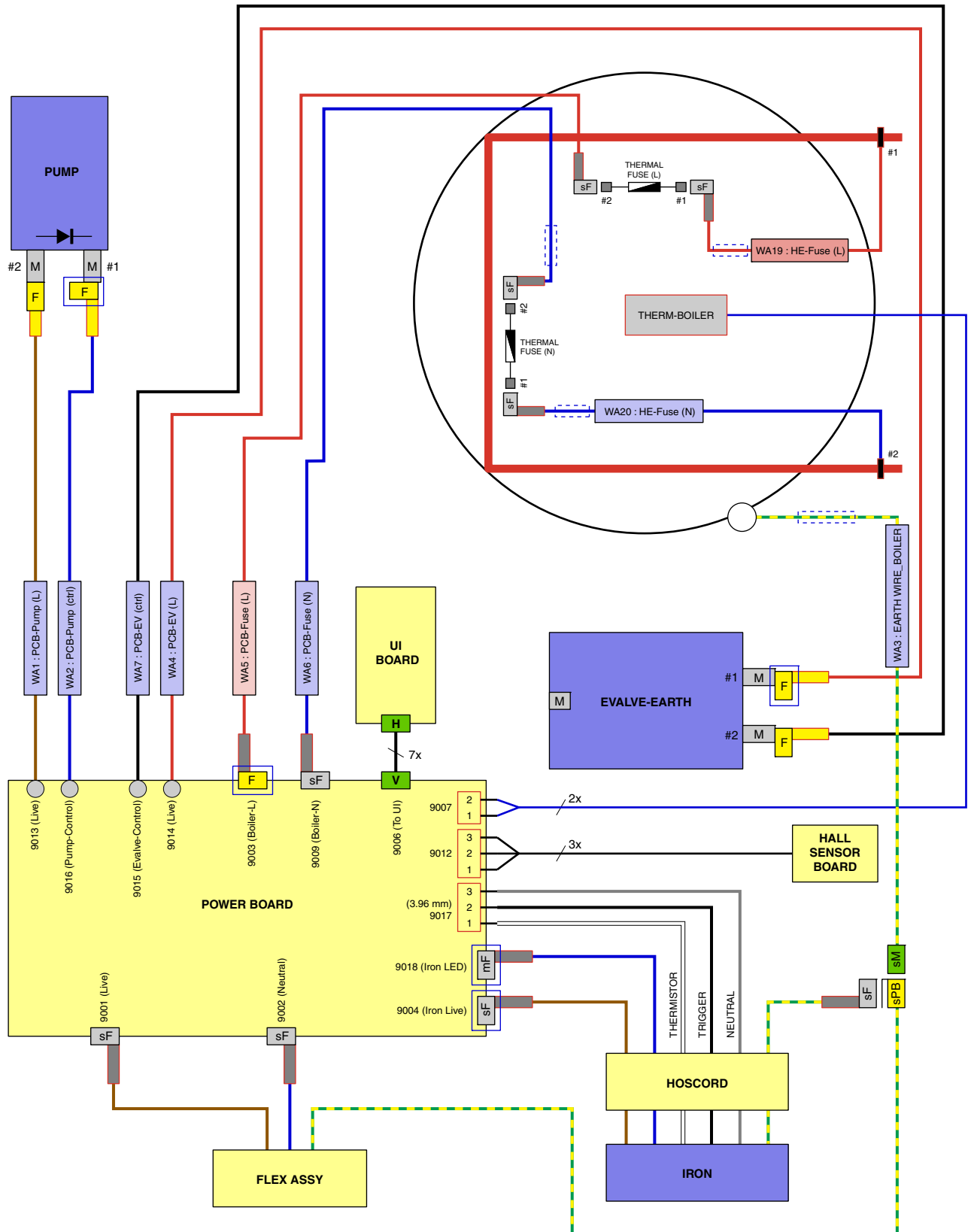
**FLOATING PLATFORM
ASSY 61**

Remove	WATER TANK PRINTED ASSY 58
Remove	TRAY RUBBER CAP 54
Remove	Screws K1, K2
Disassemble	TRAY MOLDED 53
Remove	Screws L1 - L4
Remove	Screw M
Remove	Screws N1 - N4
Disassemble	DISPLAY COVER PRINTED ASSY 50
Remove	Screws P1 – P3
Disassemble	STAND TOP MOLDED 45
Remove	Screws Q1, Q2
Disassemble	POWER CORD STORAGE MOLDED 42
Disassemble	HOSE CORD STORAGE COMPARTMENT ASSY 43
Remove	RINSE CAP ASSY 56
Remove	Screws R1, R2
Disassemble	RINSE HOUSING PRINTED 39
Remove	Screws S1, S2, S3
Disassemble	BOILER SUPPORT BRACKET MOLDED 41
Disassemble	BOILER ASSY 36
Remove	Screws T1, T2
Disassemble	BUTTON PANEL ASSY 51
Remove	Screw U
Disassemble	POWER BOARD PCB ASSY 60
Remove	Screws X1 - X4
Disassemble	PLASTIC CAP MOLDED 62
Disassemble	FLOATING PLATFORM ASSY 61















Pos	Service code	Description
30	4239 021 68322	Stand bottom assy
31	4239 021 68311	Pump assy
32	4239 026 42081	De-air valve
33	4239 015 59201	Braided rubber hose boiler
34	4239 010 10261	Inox clamp
35	4239 026 32181	Spacer Bottom molded
36	4239 021 68331	Boiler assy
37	4239 017 12802	Electrovalve
38	4239 021 61812	Thermistor assy Boiler
39	4239 021 68341	Rinse Housing Printed
40	4239 026 31641	Spacer top molded
41	4239 026 42581	Boiler support bracket molded
42	4239 026 47671	Power cord storage molded
43	4239 021 67521	Hose cord storage compartment assy
44	2422 070 98358	Cord set EU
	2422 070 98381	Cord set Australia
45	4239 021 67532	Stand top printed
46	4239 026 44771	Tank Catch molded
47	4239 014 54982	Tank Catch Spring
48	4239 021 63562	Inlet coupling plate welded
49	4239 026 44801	De-air coupling molded
50	4239 021 67543	Display cover printed assy
51	4239 021 67561	Button panel assy
52	4239 021 67591	Front lock assy
53	4239 021 68442	Tray assy
54	4239 015 59221	Tray rubber cap
55	4239 015 59531	Rinse Rubber Bush
56	4239 021 67611	Rinse cap assy
57	4239 015 58201	O-ring
58	4239 021 67631	Water tank printed assy
59	4239 021 61723	Hall sensor PCBA assy
60	4239 021 68572	Power Board PCB assy
61	4239 021 68812	Floating platform assy
62	4239 026 47651	Plastic cap molded







LEGEND:

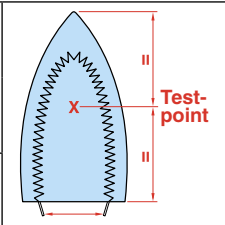
- | | | | |
|---|--|---|--|
|  | Female Push-on 4.8 x 0.8 mm L-shape Connector |  | Sleeve - Fiber Glass |
|  | Female Push-on 5.2 x 0.8 mm L-shape Connector |  | Insulated Tab - Silicon Rubber |
|  | Male Tab Terminal 4.8 x 0.8 mm |  | Ring Terminal M4.3 |
|  | Female Push-on L-shape Connector 6.35 x 0.8 mm |  | Splice 6.0 mm |
|  | Female Push-on Connector 6.35 x 0.8 mm |  | Directly soldered on PCB |
|  | Male Tab Terminal 6.35 x 0.8 mm |  | 7-pin Board-in Connector 2 mm (horizontal) |
|  | Piggy Back Push-on Connector 4.8 x 0.8 mm |  | 7-pin Connector 2 mm (vertical) |

- Due to the high wattage of the iron, only the specified cord set must be used.
- Should damage be observed on the **HOSE CORD MOUNTED ASSY 15** or **CORD SET 44**, they must be replaced. Continued usage is not allowed.
- When replacing the **MICROSWITCH ASSY 12**, please dress the 2 attached wires such that they are free of tension. Pulling force on the wires may affect the steam triggering.
- To avoid damage to the sealing & components of the **BOILER ASSY 36**, **NEVER** clean the boiler assy with vinegar, descaling agent or other corrosive chemicals.
- When replacing **ELECTROVALVE 37** or **PUMP ASSY 31**, please be reminded to apply loctite at the joints for good sealing.
- After the product has been repaired, it should function properly and has to meet the safety requirements & legal regulations as laid down & officially established at this moment.
- The following tests are common checks that are conducted on a repaired product before it is returned to the consumer.

1. Soleplate temperature

Check that soleplate temperature is within below requirement.

Measure the temperature of the soleplate after the iron has reached steady state i.e connected to the mains for at least 15 minutes. The table below shows the temperature requirement.

Soleplate temperature (Deg C)		Materials, for example	
Minimum	Maximum		
120	143	All fabric types	

2. Leakage current

Check that leakage current is within IEC requirement.

Measure leakage current between LIVE/NEUTRAL & EARTH.

IEC requirement is that at 230 V supply, the EARTH leakage current must be less than 0.75 mA.

3. Water leakage / Functionality

Check that there is no water leakage from any part of the product during operation.

Check that the functionality of the product (product dependent) eg. steaming, variable steam, SOS, ASO etc is working properly.

4. Loose part

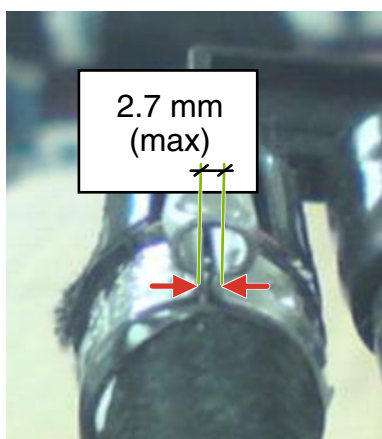
Check that there are no loose parts eg. extra screw in the product that can cause short-circuit or product malfunction.

5. Crimping INOX CLAMP 34

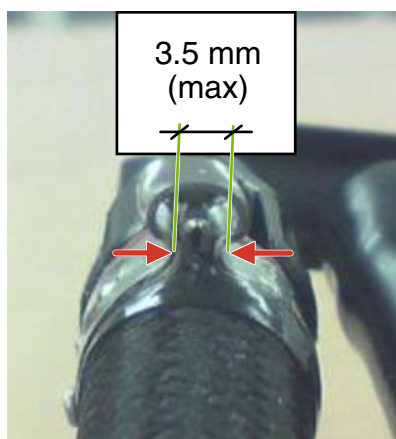
When exchanging **BOILER ASSY 36** or **DE-AIR VALVE 32** or **BRAIDED RUBBER HOSE BOILER 33**, it is necessary to replace the **INOX CLAMP 34**. Below instructions ensure that the inox clamp is crimped correctly.



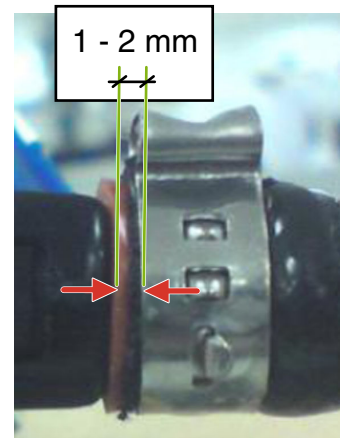
Knipex Crimping tool



Direct crimp form



Fold in crimp



Distance from edge of crimp to rubber hose

CAUTION: When crimping on plastic part like **DE-AIR VALVE**, avoid over crimping which may lead to plastic part crack.

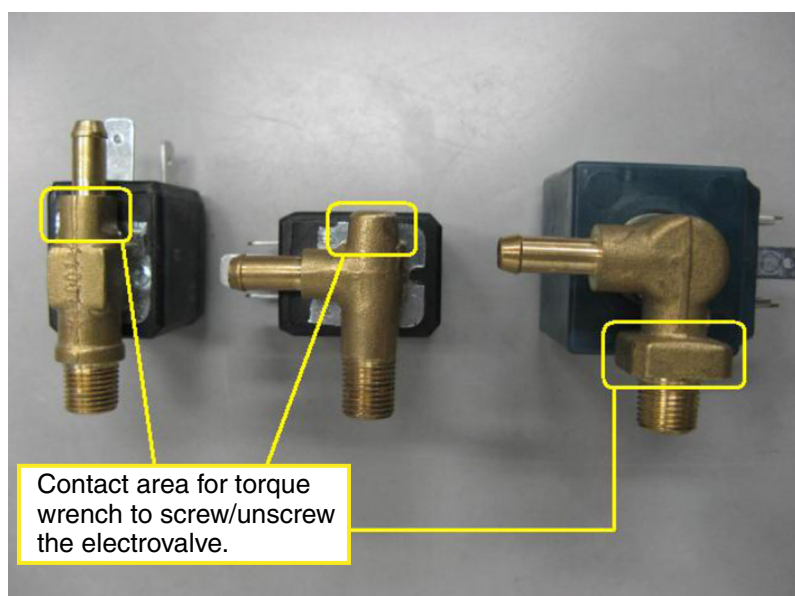
6. Replacing ELECTROVALVE 37

To prevent damage to the electrovalve during service activity, please observe below precautions during disassembly & reassembly.

Tools required: Torque wrench (set to 6kgf)



CAUTION #1: The torque wrench engagement is allowed **ONLY** at the yellow box locations in below picture.



CAUTION #2: Ensure torque wrench jaw does not contact the solenoid body.

