

Service  
Service  
**Service**

HD3037/03

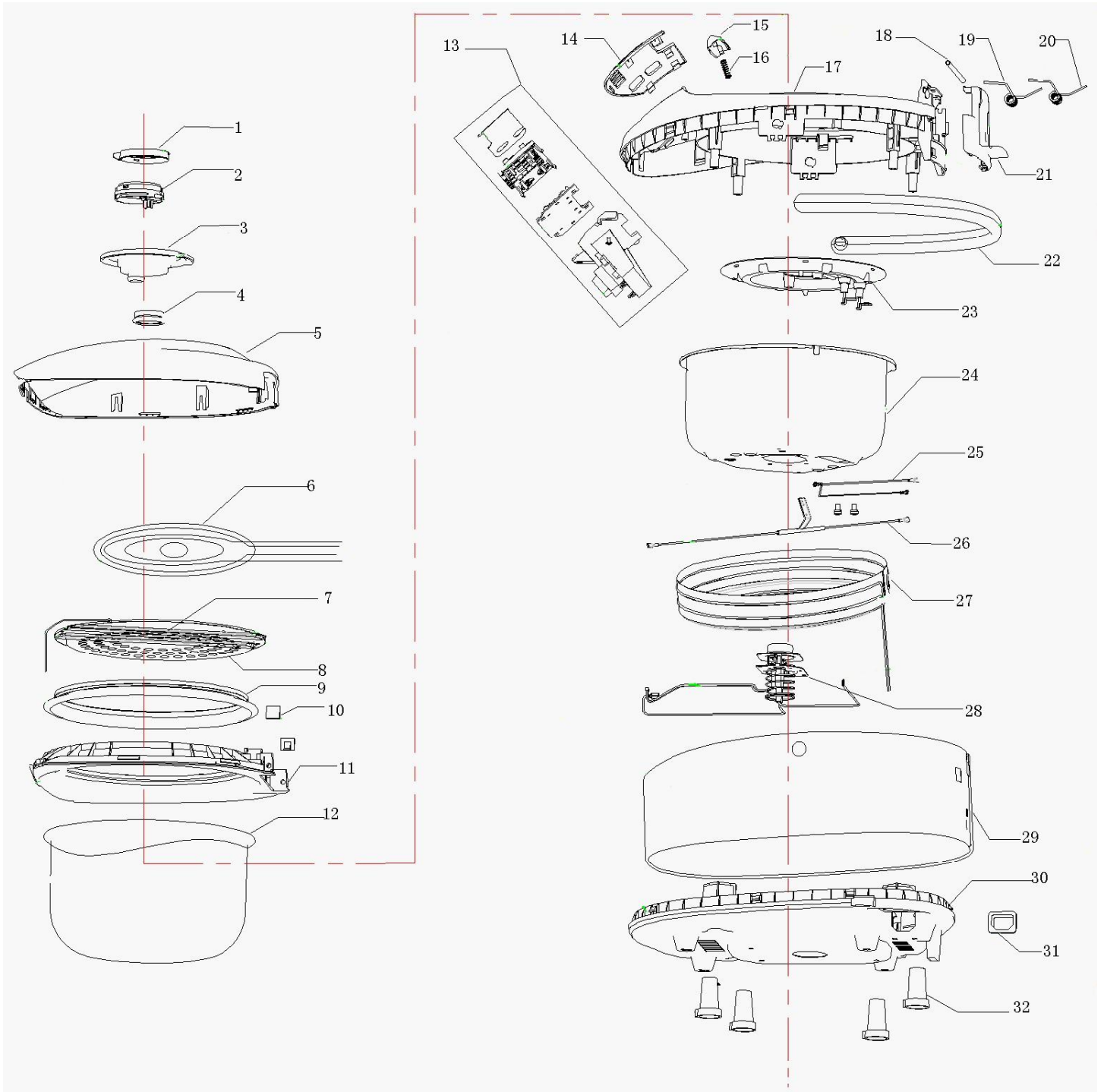
Philips Consumer Lifestyle

# Service Manual

Product information  
Features

Technical information

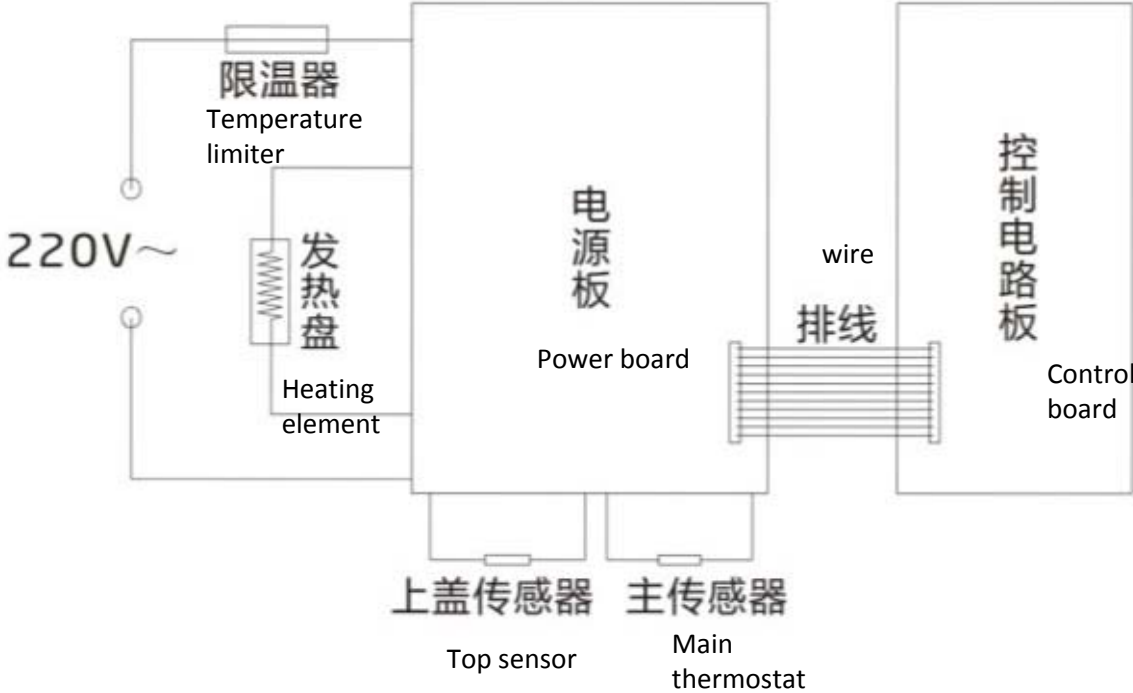
# HD3037Exploded View









## HD3037 Parts List

序号	12NC	English Description	物料描述	物料编码
1	996510050233	deco ring for steam valve	装饰圈	620202900098
2	996510050227	Cover for steam valve	蒸汽阀盖	620202110157
3	996510050194	base for steam valve	蒸汽阀座	620202110159
4	996510064115	sealing ring for steam valve	蒸汽阀密封圈	660400000041
5	996510050196	top cover	面盖	620202050151
6	996510057874	top sensor	上盖发热传感组件	610201040038
7	996510057175	Mound layer for spring of gemel	铰链弹簧压条	620203900054
8	996510057868	Panel for keeping warm	保温座板	620203020061
9	996510050193	Seal for inner pan	内锅密封圈	610206010011
10	996510050225	Silicon block	阻尼硅胶块	610206900019
11	996510050206	Inner cover	内盖	620202050152
12	996510066925	Inner pan	内锅	620203030261
13	996510066927	control box assy(with bracket)	控制盒组件+支架	661000003141
14	996510066928	IMD	IMD面板	660500003242
15	996510058316	Button for opening cover	开盖按钮	620202010033
16	996510050223	Spring of button	按钮弹簧	610204020071
17	996510050222	House cover	外壳罩	620202120084
18	996510050197	Axle of gemel	铰链轴	610204020015
19	996510057862	Spring of gemel (left)	铰链弹簧(左)	610204020014
20	996510050202	Spring of gemel (right)	铰链弹簧(右)	610204020013
21	996510050212	Cover for gemel	铰链盖	620202060029
22	996510050204	Handle	提手	620202140049
23	996510057864	Heating Element Module	发热盘	620201530020
24	996510050229	Outer Pan	外锅	620203030250
25	996510063383	inner wire	内部线组	610201550083
26	996510058359	Temperature limit assy	限温器组件	620201520019
27	996510057837	Side heating element assy	侧面发热组件	610201540002
28	996510058362	Main thermostat module	热敏电阻式主温控器组件	620201520008
29	996510057867	House	外壳	620203040141
30	996510050218	House base	底座	620202110158
31	996510057849	Power socket	插座	610201570004
32	996510050232	Base fixture	底座紧固垫	620202900061
33	996510063035	Power cord	电源线	660200000077
34	996510066931	Fancy box	内箱	660110000125
35	996510066924	recipe	食谱	660800004022
36	996510058369	A-box	外箱	610202520259
37	996510066926	Guarantee card	保修卡	610205560059
38	996510051778	Measure cup	量杯	620202070021
39	996510051777	Rice spoon	饭勺	620202070020
40	996510056506	Steamer cage	蒸笼	620202090017
41	996510051789	Soap spoon	汤勺	620202080007
42	996510066929	DFU	说明书	660800004023


Circuit Diagram:



#### 四、拆卸步骤:







1、remove steam valve	2、separate steam valve cover from steam valve base
 <p>A close-up photograph showing a hand turning the white steam valve on top of a white rice cooker. The date stamp '2011/10/11' is visible in the bottom right corner.</p>	 <p>A close-up photograph showing a hand holding the white steam valve cover that has been removed from the rice cooker. The date stamp '2011/10/11' is visible in the bottom right corner.</p>
3、remove four screw on the base	4、separate base from house
 <p>A photograph showing the bottom of the white rice cooker base with four screws being removed by a screwdriver. A blue label is visible on the base. The date stamp '2011/10/11' is visible in the bottom right corner.</p>	 <p>A photograph showing the white base of the rice cooker being separated from the main housing. The date stamp '2011/10/11' is visible in the bottom right corner.</p>
5、take out socket from base	6、pull out top sensor
 <p>A close-up photograph showing a hand pulling out a black socket from the base of the rice cooker. The date stamp '2011/10/11' is visible in the bottom right corner.</p>	 <p>A photograph showing the internal components of the rice cooker base, including the top sensor and various electronic components. The date stamp '2011/10/11' is visible in the bottom right corner.</p>

拆卸步骤:

<p>7、remove screws on the cover of gemel.</p>	<p>8、remove cover of gemel</p>
 <p>2011/10/11</p>	 <p>2011/10/11</p>
<p>9、remove top cover assembly</p>	<p>10、separate top cover from inner cover with a spatula.</p>
 <p>2011/10/11</p>	 <p>2011/10/11</p>
<p>11、remove top cover</p>	<p>12、detach pressed layer of warm keeping board</p>
 <p>2011/10/11</p>	 <p>2011/10/11</p>



拆卸步骤:

13、 remove screws on the warm keeping board	14、 separate from inner cover , sealing ring and warm keeping board
	
15、 pull out terminal of socket	16、 pull out terminal of power board
	
17、 fasten terminal of heating element with pliers and remove screws on heating element with screwdriver	18、 remove screws used to fix main thermostat and detach main thermostat.
	

拆卸步骤:

19、 remove screws used to fix heating element and take down heating element.



20、 remove screws used to fix power board bracket.



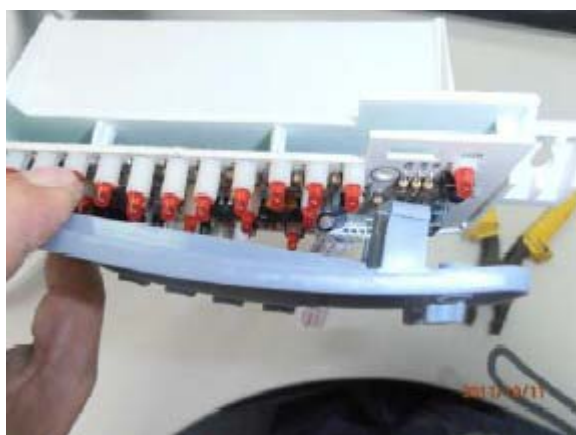
21、 pull up flat cable of display board .



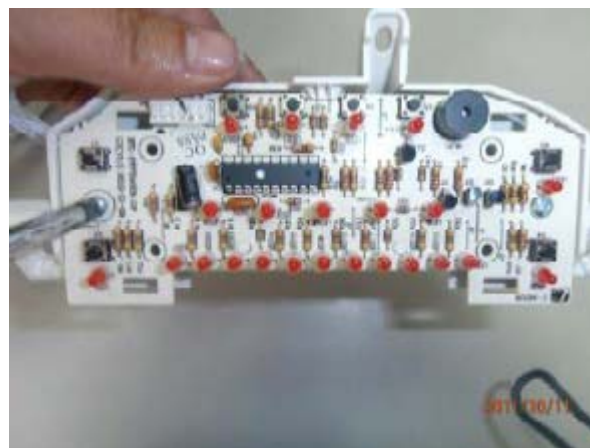
22、 remove screws used to fix power board



23、 detach control board bracket



24、 detach screws used to fix control board





拆卸步骤:

25、perk the salient point of outer pan	26、rotate outer pan and take it out
	
27、push the outer shell	28、detach outer shell
	
29、separate control panel from outer shell	30、detach control panel
	

拆卸步骤:

31、take down button for opening cover	
	

## Troubleshooting

Fault	Reason	Solution
1. Rice Cooker doesn't work	1.No power supply is outputted from the socket	Check the power supply of the socket by having another appliance connected
	2.Power cord being open circuit	Check the power cord by replacing it with the a same one
	3.The plug isn't fully connected	Insert the plug completely to ensure a fully connecting
	4.The corresponding function button is not pressed	Choose the function ,then press start button
	5. Temperature Limiter assembly fuses	Replace the Temperature Limiter assembly
	6.Heating element damages	Replace heating element and related assembly
	7.Bottom sensor being open circuit	Replace bottom sensor
	8.Bottom sensor being short circuit	Replace bottom sensor
	9.High temperature of bottom sensor	It is suggested to replace the PCB board if it is stilled shown over temp. even the inner pot is closely contacted with the heating element
	10.Top sensor being open circuit	Replace top sensor
	11.Top sensor being short circuit	Replace top sensor
2. Undercooked	1.Rice and water in wrong proportion	Make right rice-water proportion under manual instruction
	2.Constant lid-opening while simmering	In no rush of opening lid while simmering rice
	3. Inner pot inappropriately placed	Move the inner pot around to ensure a well contact between inner pot and heating element
	4. Raffles between heating element and inner pot	Remove raffles between heating element and inner pot( with sandpaper or alcohol )
	5. Cook rice with fat	Clean out the fat
	6.Heating element deformed or unevenly heating	Repalce the heaing element
	7.Bottom of inner pot is deformed or not fully contacted with the heating element	Repair or replace the inner pot
	8.Top heating element malfunctions	Repalce top heating element
	9.Main thermostat malfunctions	Replace main thermostat
3. Overcooked Rice	1.PCB board malfunctions	Replace PCB board
	2.Difference in rice quality	Define that whether the burning is caused by a change in rice quality
	3.Mian hermostat malfunctions	Replace main thermostat

## Troubleshooting

Fault	Reason	Solution
4. Spilled rice or porridge	1.Inner pot is overloaded	Cook with right rice & water proportion referring to the instruction manual
	2.Difference in rice quality	Change for another type of rice
	3.Rice isn't well rinsed	Rinse the rice
	4.Top sensor malfunctions	Repalce top sensor
	5.Top sensor is loosened	Make the top sensor well fixed
5. Electricity Leakage	1.Power cord is damaged	Replace the power cord
	2.Water comes into the outer pot	Clean out the water in the outer pot and put the cooker in a ventilative place for over 2 hours
	3.The cooker is operating in humid environment	Improve the operating circumstance
	4.Too much greasy dirt is left inside	Clean out the greasy dirt
	5.Plug earth terminal is not used or the socket is unearthed	Let the cooker be well earthed
	6.Insulativity of the alive components declines or interior wires damage	Check the components by meter at level of R*10M; repair or replace the defected ones
	7.Interior grounding wire loosens	Check the grounding wire to make it well-grounded
6.After powering on the rice cooker all indicators glow	1.Top sensor is broken	Replace top sensor assmebly
	2.Main thermostat is broken	Replace main thermostat
	3.The main circuit board flint carbonization	Repalce main board
7.The socket sparkles when powered on	1.Water or other liquid food flows into the socket	Clean out the water or liquid food in the socket
	2.Plug and socket is oxidized or coming loose	Remove the oxidation with a knife or sandpaper, fasten the loosen parts with glue
	3.Fuse is burnt caused by some other reasons	Find out the reason and replace with another fuse of the same model
8.press button stuck	Function buttons on main board or the main board itself are broken	Replace the function button or main board
9.Water spills when cooked with rice of small portion	too much water	Cook in rice-water proportion under the instruction of user's manual