

Service
Service
Service



Philips Consumer Lifestyle

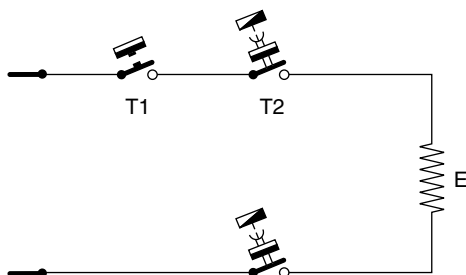
Service Manual

PRODUCT INFORMATION

- This product meets the requirements regarding interference suppression on radio and TV.
- After the product has been repaired, it should function properly and has to meet the safety requirements as officially laid down at this moment.

TECHNICAL INFORMATION

- Voltage : 220 - 240 V
- Frequency : 50 - 60 Hz
- Power consumption : 2400 W
- Contents Kettle : 500 - 1700 cc
- On/off indication : Blue LED illuminating kettle content
- Coloursetting : Brushed metal / Black
- SAP coding : HD4667/20



DISASSEMBLY- AND RE-ASSEMBLY ADVISE

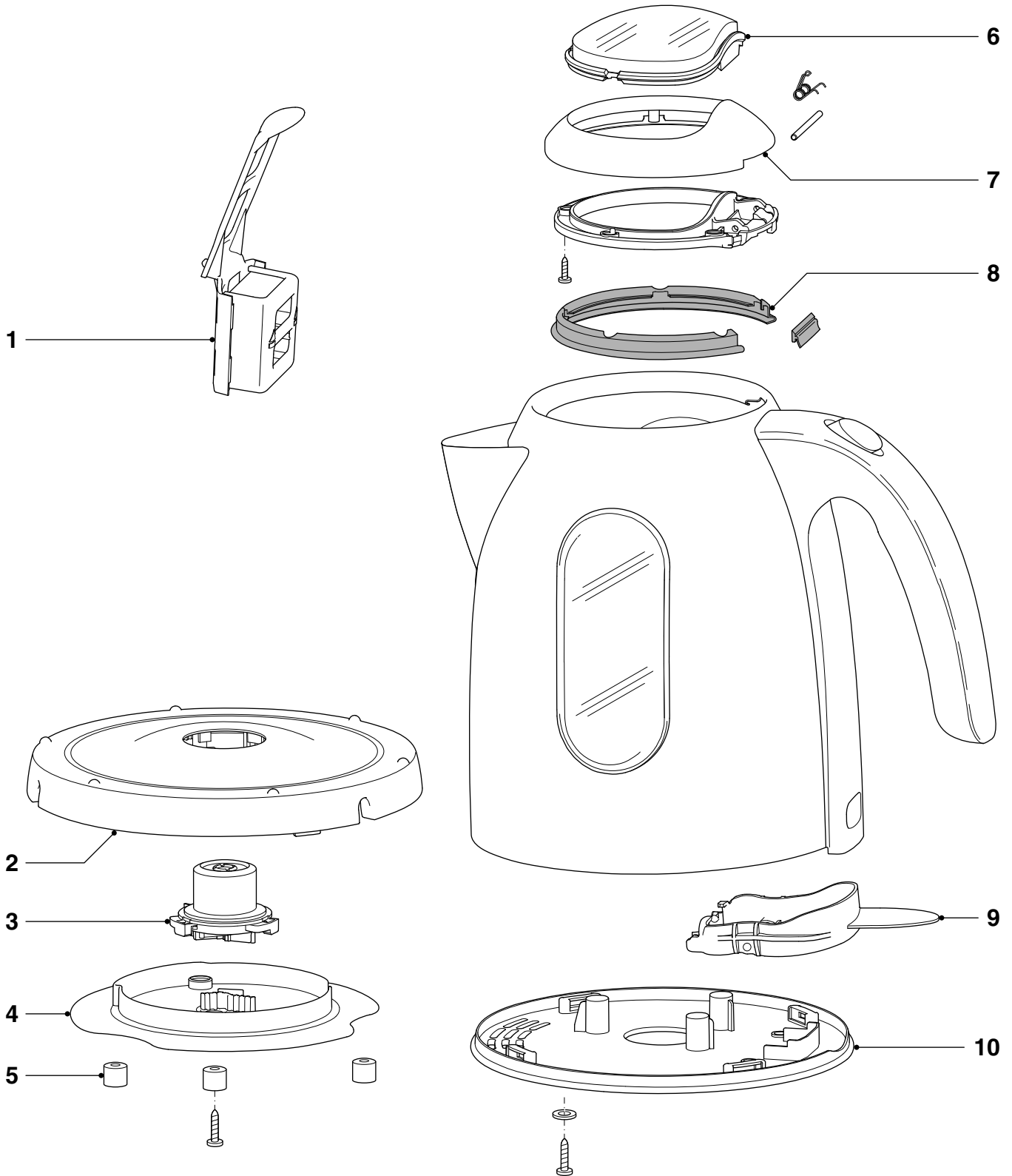
- No specific issues

REPAIR INSTRUCTIONS

- **Electrical circuit**
When the appliance does not work, check the electrical Circuit.
- **Descaling**
Fill the kettle with water up to three-quarters of the maximum level indication and press the on/off switch. After the kettle has switched itself off, add white vinegar (8% acetic acid) or an appropriate descaler up to the maximum level indication. Leave the solution in the kettle overnight. Empty the kettle and rinse the inside thoroughly. Repeat this procedure if there is still some scale left in the kettle.
- **Cleaning filter**
Clean the filter by rinsing it under a running tap. If necessary, you can use a soft nylon brush. The scale filter can also be cleaned in the dishwasher or clean the filter by de-scaling it in the same way as the kettle. Let the filter soak in a cup of warm water with some white vinegar or an appropriate descaler. Take the filter out of the cup and rinse it thoroughly.

OPTIONAL (accessories)

- Commercial trade number triple filter : HD4992 (Black)



Pos	Service code	Description
1	4222 459 45239	Triple filter HD4992
2	4222 459 56201	Base upper
3	9965 000 32709	Plug CS7
4	4222 459 45241	Base lower
5	4222 459 45242	Rubber feet (3pcs)

Pos	Service code	Description
6	4222 459 45245	Transparent Lid
7	4222 459 45246	Lid upper
8	4222 459 45247	Lid sealing
9	4222 459 45244	Switch handle
10	4222 459 45243	Kettle bottom

= changed