

Service
Service
Service

HD4933/40

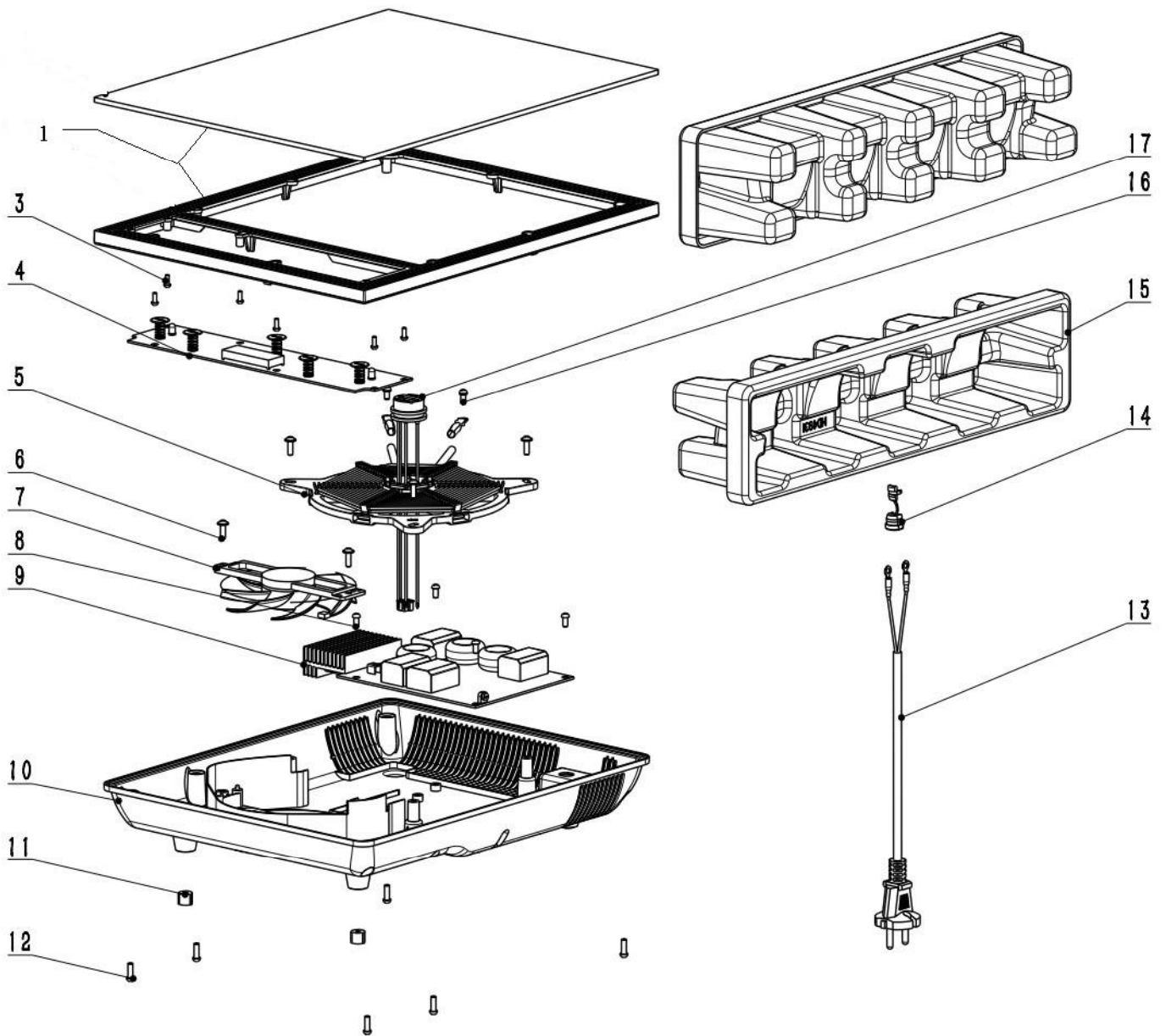
Philips Consumer Lifestyle

Service Manual

Product information
Features

Technical information





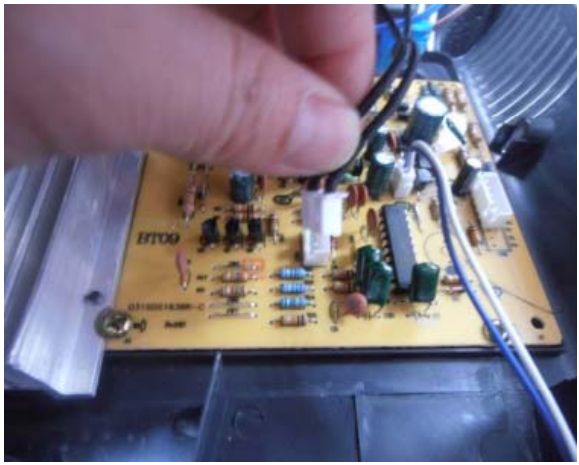
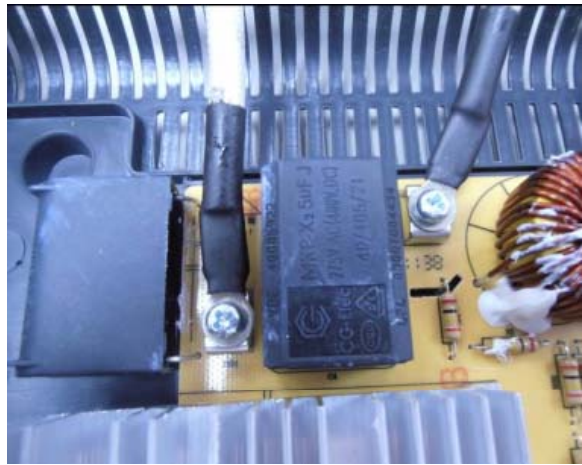
Exploded View




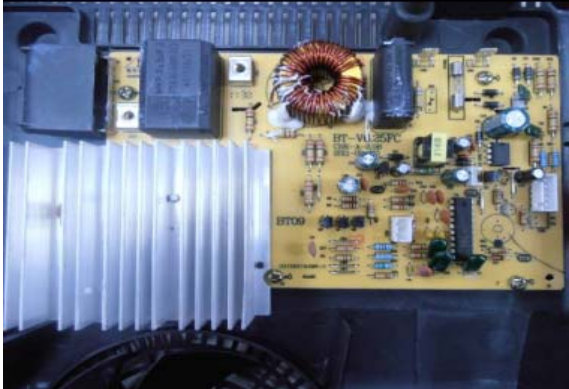
Parts List

item	12NC	English Description	物料描述	物料编码
1	996510068864	top ceramic plate assembly	面盖组件	620102580097
4	996510068869	display board	显示板	610101510045
5	996510068868	magnetic coil assembly	励磁线圈组件	610101120031
7	996510057745	FAN ASSY	风扇总成	610101130002
9	996510068871	power board	电源板	610101510047
10	996510059435	BASE	底座	620102030124
11	996510057755	RUBBER FEET	胶脚	610106010005
13	996510058739	POWER CORD	电源线	610101520040
14	996510051959	buckle for power cord	线扣	620102900002
15	996510068865	paper board	纸托	610102030200
17	996510057753	main thermostat	热敏电阻组件	610101110010
18	996510068866	data plate	铭牌	610105530144
19	996510068867	fancy box	内箱	610102510147
20	996510068799	DFU	说明书	610105510174
21	996510068872	outer carton	外箱	610102520145
22	996510060097	warranty card	保修卡	610205560053

Disassembling Procedure:

<p>1、 screw out the screws used to fasten the base.</p>	<p>2、 pull out flat cable of display board.</p>
 A photograph showing the back of a black plastic device. Four screws are being removed from the corners. A circular fan is visible on the right side.	 A close-up photograph of the internal components. A white flat cable is being pulled out from a yellow printed circuit board (PCB). A large copper coil is visible in the foreground.
<p>3、 detach screws used to fasten display board and remove display board.</p>	<p>4、 detach three screws used to fasten magnetic coil assembly.</p>
 A photograph showing the back cover of the device with the display board removed. The board is green and has various electronic components on it.	 A photograph showing the magnetic coil assembly being detached from the device. The coil is made of copper wire and is mounted on a metal frame.
<p>5、 pull out terminal of NTC.</p>	<p>6、 screw out two screws used to fasten magnetic coil wire.</p>
 A close-up photograph of a hand pulling out a terminal from a yellow PCB. The terminal is connected to a component on the board.	 A photograph showing two screws being removed from the magnetic coil wire. The coil is mounted on a yellow PCB.

Disassembling Procedure:

<p>7、 pull out plug wire of power cord.</p>	<p>8、 screw out screws used to fasten main PCB.</p>
	
<p>9、 detach two screws used to fasten fan and remove fan.</p>	
