



Philips Consumer Lifestyle

# Service Manual

## PRODUCT INFORMATION

- Temperature light
- Non-slip feet
- Grease tray
- Reversible grill plate
- This product meets the requirements regarding interference suppression on radio and TV.
- After the product has been repaired, it should function properly and has to meet the safety requirements as officially laid down at this moment.

## DISASSEMBLY- AND RE-ASSEMBLY ADVISE

- No specific issues.

## REPAIR INSTRUCTION

- No specific issues.

## OPTIONAL (accessories)

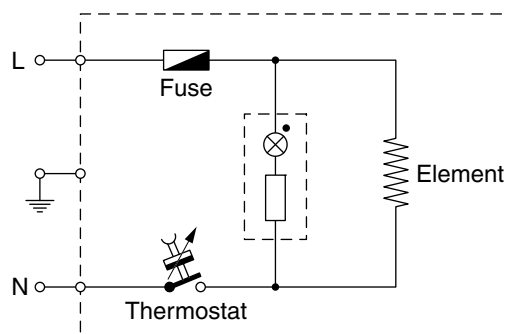
- No specific issues.

## TECHNICAL INFORMATION

- Voltage : 220 - 240 V
- Frequency : 50 / 60 Hz
- Power consumption : 1500 W
- Cord length : 1 m
- Color(s) : Steel / Black
- Materials : Plastic housing  
ALU plates  
Metal parts
- SAP coding : HD6322/20  
HD6322/21

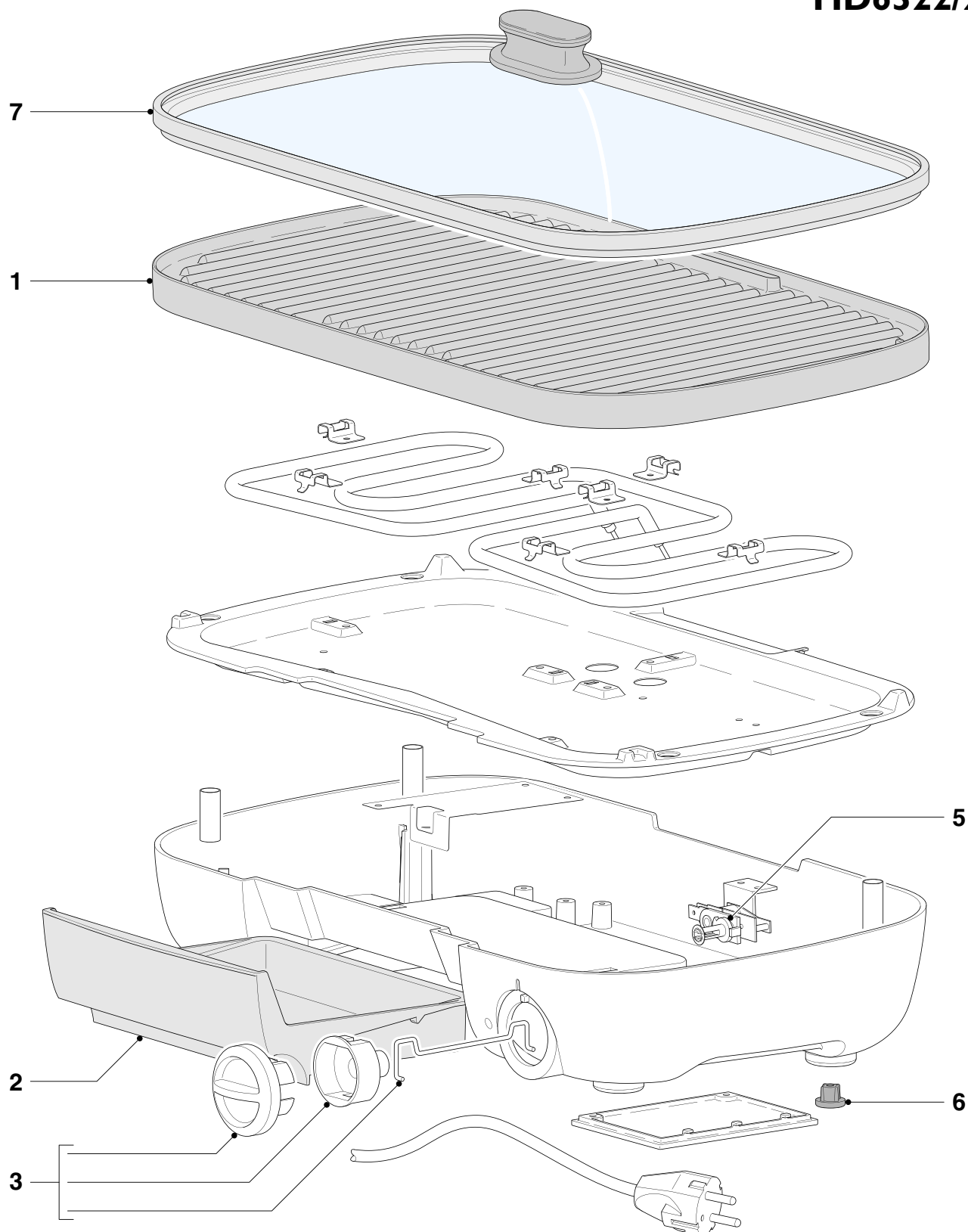
## • Weight and dimensions:

- Grill plate dimensions (W x D) : 319 x 223 mm
- Product dimensions (W x H x D) : 405 x 280 x 315 mm
- Weight appliance : 3.9 kg



# PARTS LIST & EXPLODED VIEW

# HD6322/20 HD6322/21



| Pos | Service code   | Description            |
|-----|----------------|------------------------|
| 1   | 4222 459 53261 | Reversible Grill plate |
| 2   | 4222 459 53271 | Grease Tray            |
| 3   | 4222 459 53611 | Knob assy              |

| Pos | Service code   | Description         |
|-----|----------------|---------------------|
| 5   | 4222 459 53621 | Thermostat          |
| 6   | 4222 459 54691 | Rubber feet (4 pcs) |
| 7   | 9965 100 54547 | Lid                 |