



Philips Consumer Lifestyle

# Service Manual

**PRODUCT INFORMATION**

- This product meets the requirements regarding interference suppression on radio and TV.
- After the product has been repaired, it should function properly and has to meet the safety requirements as officially laid down at this moment.

**TECHNICAL INFORMATION**

- Voltage : 220 - 240V~
- Frequency : 50 - 60 Hz
- Power consumption : 1100 W
- Contents jug : 1,2 L
- Cord length : 0,8 m
- Color setting : Black / Metal
- Filter size : 1 x 4
- Dimensions (L x W x H)
  - Appliance : 24,0 x 21,0 x 32,0 cm
  - F-Box : 26,8 x 23,8 x 35,8 cm
- Coffee temperature directly after brewing : > 80 °C
- Coffee temperature during keep warm (jug half full) : 80 - 85 °C
- Keep warm time : 60 min
- Auto shut off time : 30 mins after end of brewing (HD7462 only)
- Materials
  - Housing : PP
  - Hoses : Silicon
  - Jug : Glass / PP

**DISASSEMBLY- AND RE-ASSEMBLY ADVICE**

- No specific issues

**REPAIR INSTRUCTION**

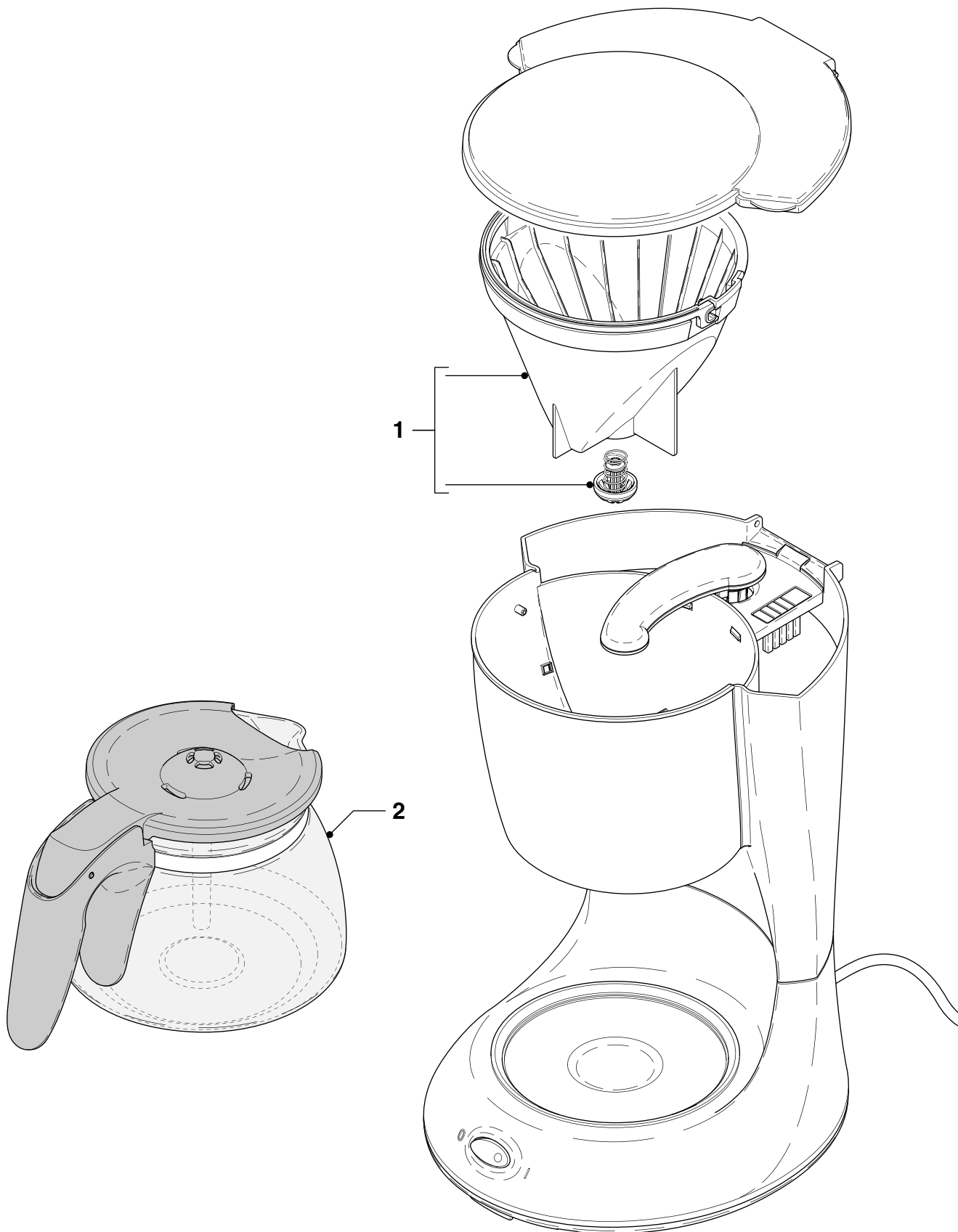
Replacement product

• **Descaling**

If the water system is nearly or less clogged by scale then operate the coffeemaker a few times with vinegar or with a 10-15% solution of either vinegar-acid, citric acid or tartar acid, into cold tap water. Do not use other de-scaling agents as these may harm the appliance. If this procedure does not restore the function, then switch off the coffeemaker when the acid has passed through during approximately 3 min. Keep the appliance in this condition overnight and continue/repeat the cleaning operation. After the de-scaling procedure, operate the coffeemaker twice with tap water.

**OPTIONAL (accessories)**

- 9965 100 69286 Permanent filter Black



Pos	Service code	Description	Remark
1	9965 100 62238	Filter basket	Deep black
2	9965 100 73463	Jug Aroma Twister	Deep black
	9965 100 69286	Permanent filter	Black