

**Philips Consumer Lifestyle**

Service Manual

Product information

- This product meets the requirements regarding interference suppression on radio and TV.
- After the product has been repaired, it should function properly and has to meet the safety standards as officially laid down at this moment.

Technical information

- Voltage : 220 - 240 V~
- Frequency : 50 - 60 Hz
- Power consumption : 920 - 1080 W
- Contents Thermos jug : 1,2 L
- Cord length : 0,8 m
- Color setting : Black / Metal
- Filter size : 1 x 4
- Dimensions (L x W x H)
 - Appliance : 24,0 x 21,0 x 32,0 cm
 - F-Box : 26,8 x 23,8 x 35,8 cm
- Coffee temperature directly after brewing : > 80 °C
- Coffee temperature during keep warm (jug half full) : 80 - 85 °C
- Materials
 - Housing : PP
 - Hoses : Silicon

Disassembly - and reassembly advice

- No specific issues

Repair instruction

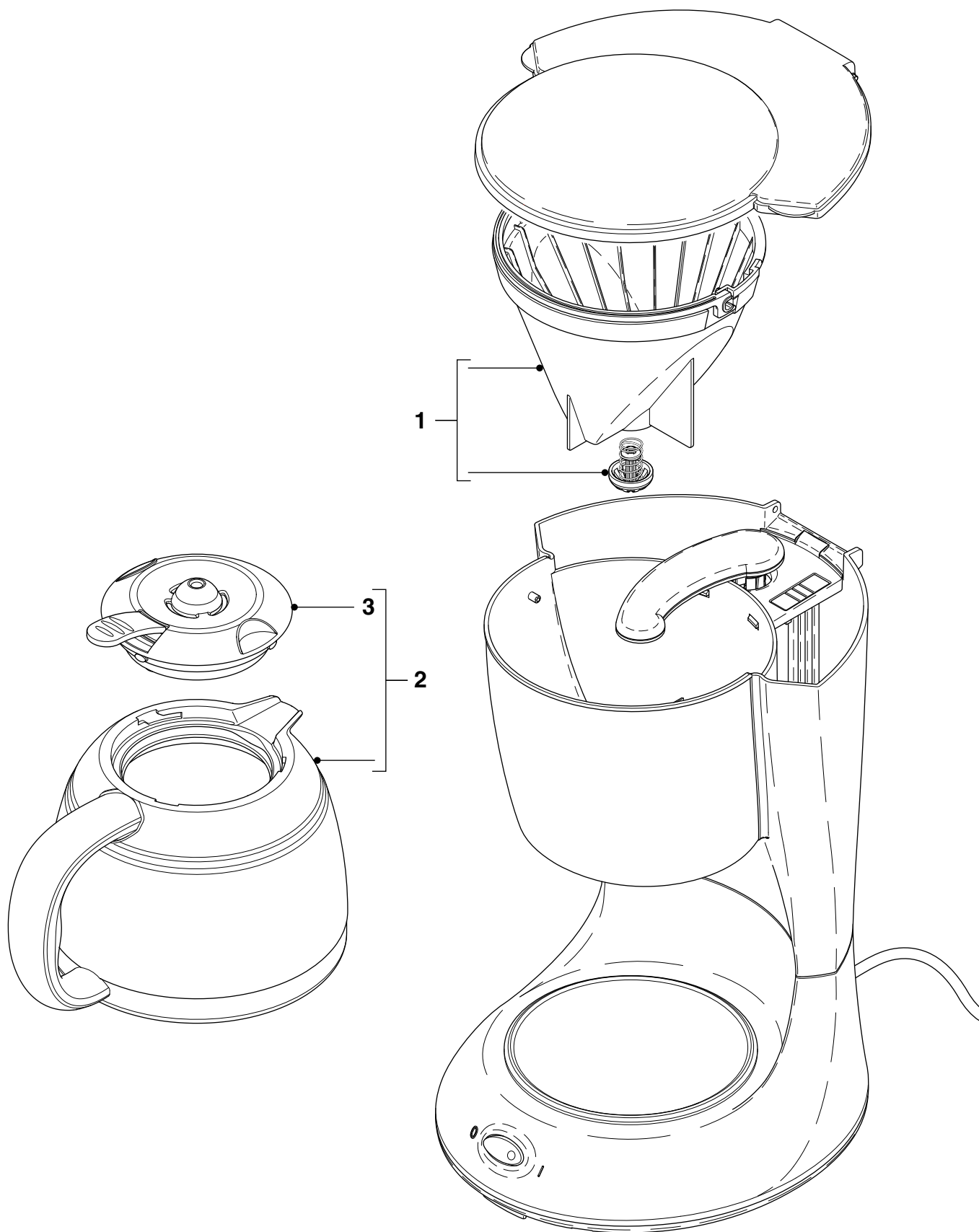
Replacement product

• Descaling

If the water system is nearly or less clogged by scale then operate the coffeemaker a few times with vinegar or with a 10 - 15% solution of either vinegar - acid, citric acid or tartar acid, into cold tap water. Do not use other de - scaling agents as these may harm the appliance. If this procedure does not restore the function, then switch off the coffeemaker when the acid has passed through during approximately 3 min. Keep the appliance in this condition overnight and continue/repeat the cleaning operation. After the de - scaling procedure, operate the coffeemaker twice with tap water.

Optional (accessories)

- No specific issues



Pos	Service code	Description	Remark
1	9965 100 62238	Filterbasket	Black
2	9965 100 70807	Thermal jug assy	Black
3	9965 100 70806	Thermal jug lid	Black