

Service  
Service  
Service



Philips Consumer Lifestyle

# Service Manual

## PRODUCT INFORMATION

- Product meets the requirements regarding interference suppression on radio and television.
- After the product has been repaired, it should function properly and has to meet the safety requirements as laid down officially established at this moment.

## TECHNICAL INFORMATION

- Voltage : 220 - 240 V or 110 - 127 V
- Frequency : 50 - 60 Hz
- Power consumption HV : 755 - 900 W  
LV : 755 - 1010 W
- Thermostat switch-off temp. : 150 ±5 °C
- Thermal fuse cut-off temp. : 188 +3/-1° C
- Timer : 0 - 60 Minutes
- Food ready indication : Bell
- Contents water tank : 1100 cc
- On/off indication : Power-on light
- Color setting : White/Sunset orange
- Size : 320 x 226 x 423 mm (L x W x H)
- Weight : 2 Kg
- SAP coding : HD9120/55

## DISASSEMBLY- AND RE-ASSEMBLY ADVISE

- No specific issues.

## REPAIR INSTRUCTION

### - Decalcification

Fill the water tank to the MAX level with white vinegar (8 % acetic acid). Do not use any other type of descaler! Put the drip tray, all bowls and the lid on the base properly. Plug in a wall socket and set timer for 25 minutes to begin steaming.

**WARNING:** If vinegar begins to boil over the edge of base, unplug the unit and reduce the quantity of vinegar slightly. When the 25 minutes have elapsed, unplug the appliance and allow the vinegar to cool down before pouring it out. Rinse the water basin several times with cold water.

*Note: Repeat the procedure if there is still some scale in the water tank.*

### - Cleaning filter

Clean the filter by rinsing it under a running tap. If necessary, a soft nylon brush can be used.

The filter can also be cleaned by de-scaling it.

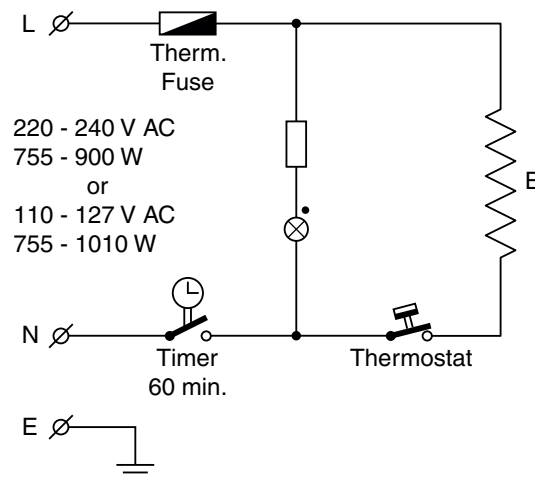
Let the filter soak in a cup of warm water with some white vinegar.

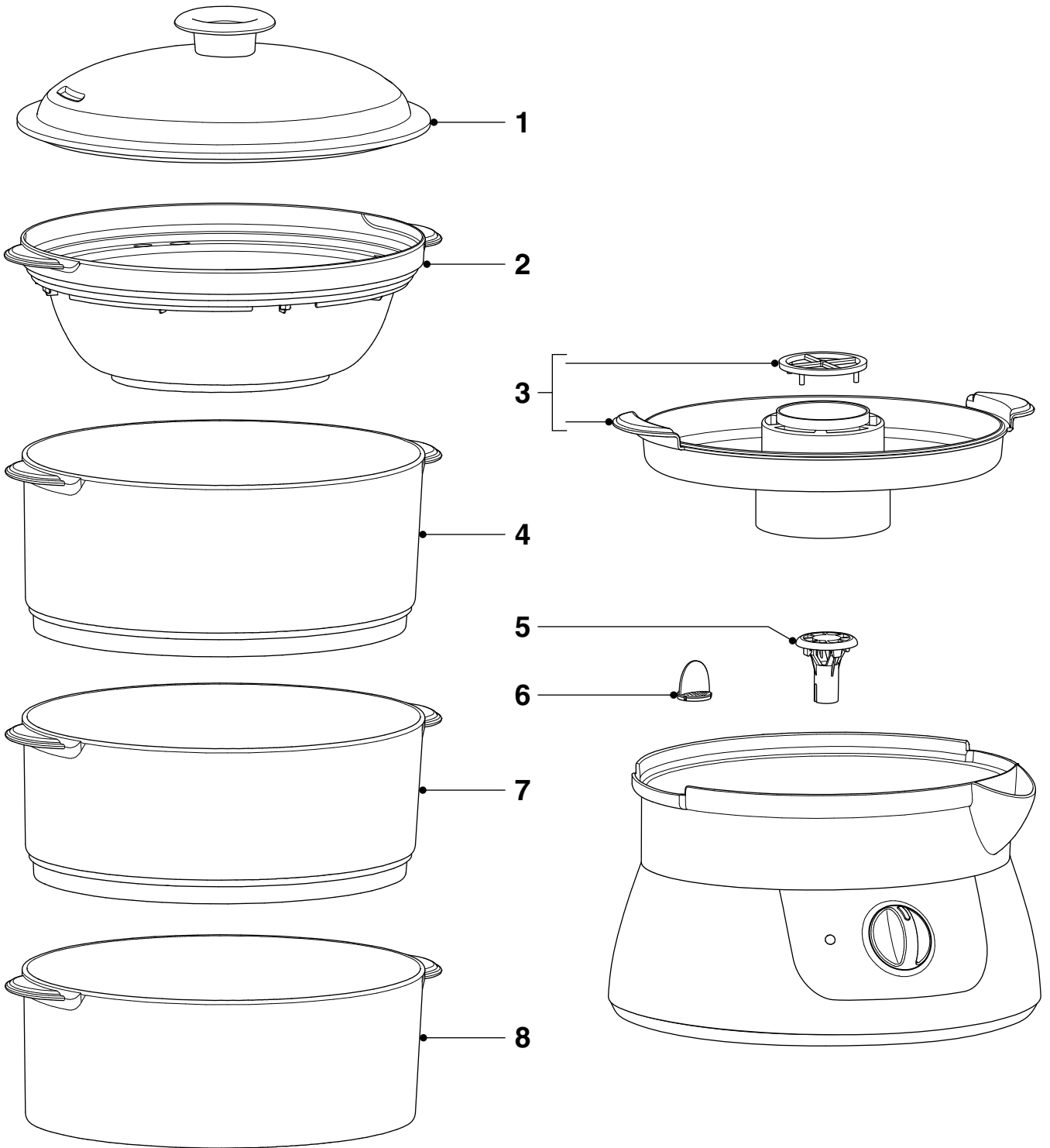
Take the filter out of the cup and rinse it thoroughly.

## OPTIONAL (accessories)

- No specific issues.

## ELECTRICAL DIAGRAM





Pos	Service code	Description
1	4222 459 45372	Cover incl. Handle White
2	4222 459 45359	Rice bowl
3	4222 459 45371	Water receiver incl. Supporter White
4	4222 459 45360	Upper steam bowl
5	4222 459 45356	Steam cap incl. Steam cap support
6	4222 459 45363	Filter
7	4222 459 45361	Middle steam bowl
8	4222 459 45362	Lower steam bowl