

Service
Service
Service



Philips Consumer Lifestyle

Service Manual

PRODUCT INFORMATION

The new Satin Ice combines a new ceramic epilating system with a contour following skin cooler and a massaging system.

Safety

- This product meets the requirements regarding interference suppression on radio and TV.
- After the product has been repaired, it should function properly and has to meet the safety requirements as officially laid down at this moment.

TECHNICAL INFORMATION

- Power Source : AC (mains)
- Voltage : 100 V - 240 V
(50 - 60 Hz)
- Motor : DC - Motor 14 V
- Power Consumption : 7,5 W
- Number of Discs : 13
- Number of catching points : 24
- RPM speed I : 2200
speed II : 2700
- Pulling actions/second
speed I : 880
speed II : 1080

DISASSEMBLY- AND RE-ASSEMBLY ADVISE

- No specific issues.

REPAIR INSTRUCTION

- This is a replacement appliance.
For this Epilator only the parts shown in the exploded view will be supplied.

Hints for repairs:

- No specific issues.

OPTIONAL (accessories)

- No specific issues.

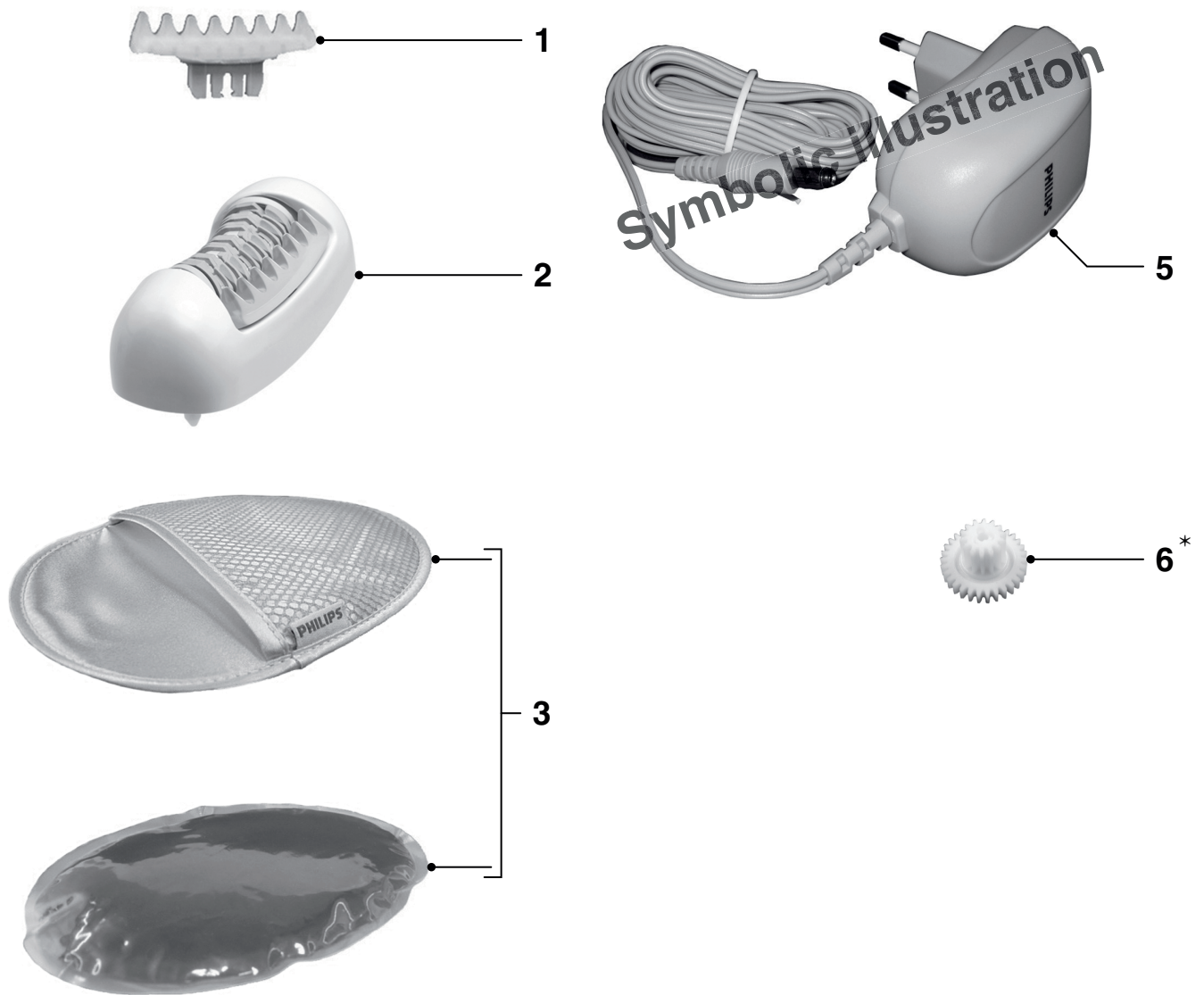
PACKAGING

F-box dimensions

- Width : 192 mm
- Depth : 114 mm
- Height : 235 mm
- Weight F-box : 0.639 kg

ATTENTION:

- By ordering pos. 2 and pos. 6 see remarks in the partlist due incompatible between old and new parts.

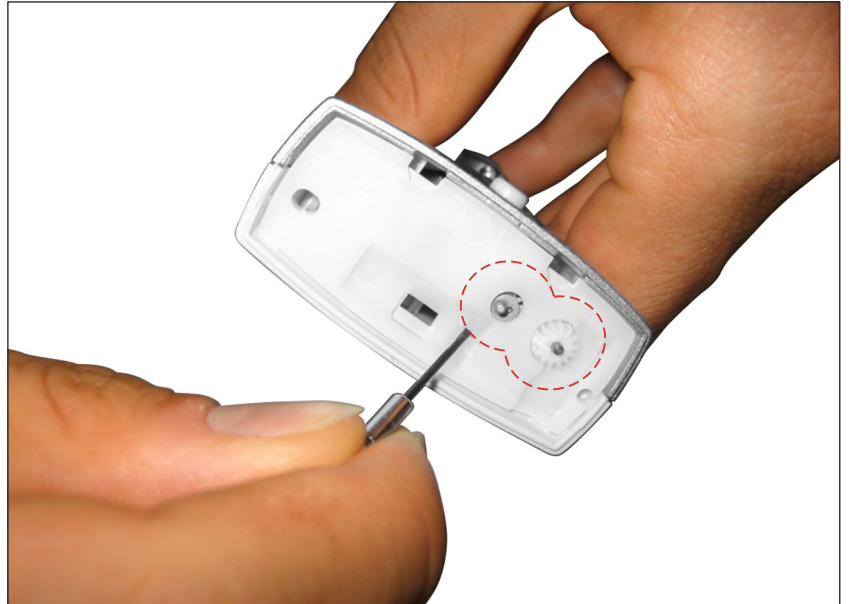


Pos	Service code	Description
1	4203 035 53990	Massage Attachment HP6481
2	4203 035 91701	Repair Kit (For products with production date till 744)
	4203 035 54170	Epilation Head new (From 744 onwards)
3	4203 035 86400	Cooling Glove + Cooling Pad
5	4203 035 51810	Adapter WEU
	4203 035 51900	Adapter GB
	4203 035 51860	Adapter ARG
	4203 035 51870	Adapter KR
	4203 035 51850	Adapter UNI - JPN/TW/USA/CD/MX
6*	4203 035 54180	Gearwheel 3 new (From 744 onwards)

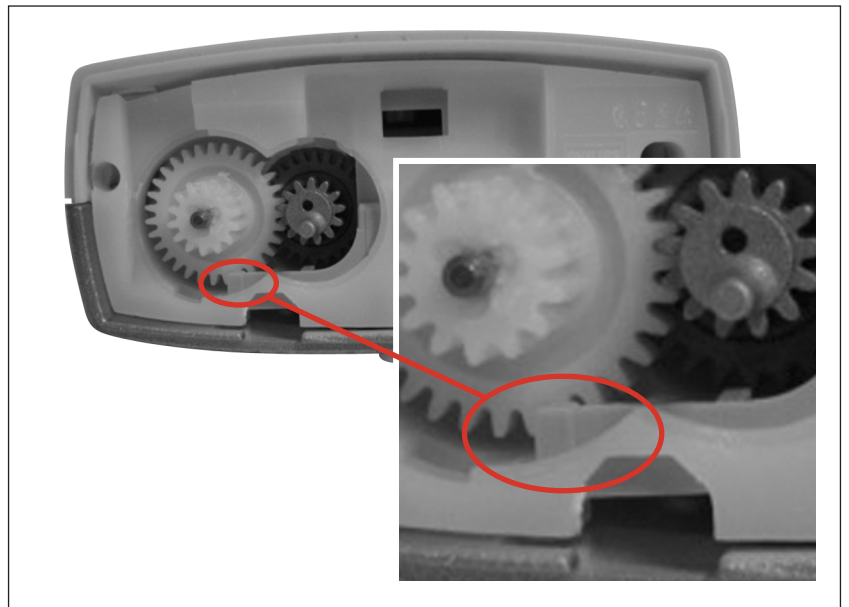
* For replacing the gearwheel see the instructions on the next pages.

■ = changed

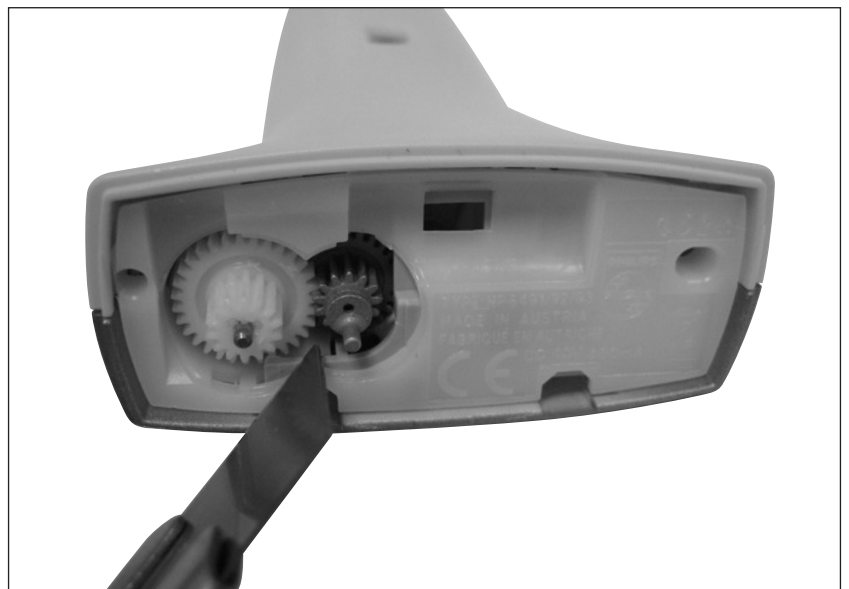
Remove the small gearing cover with a small screwdriver.



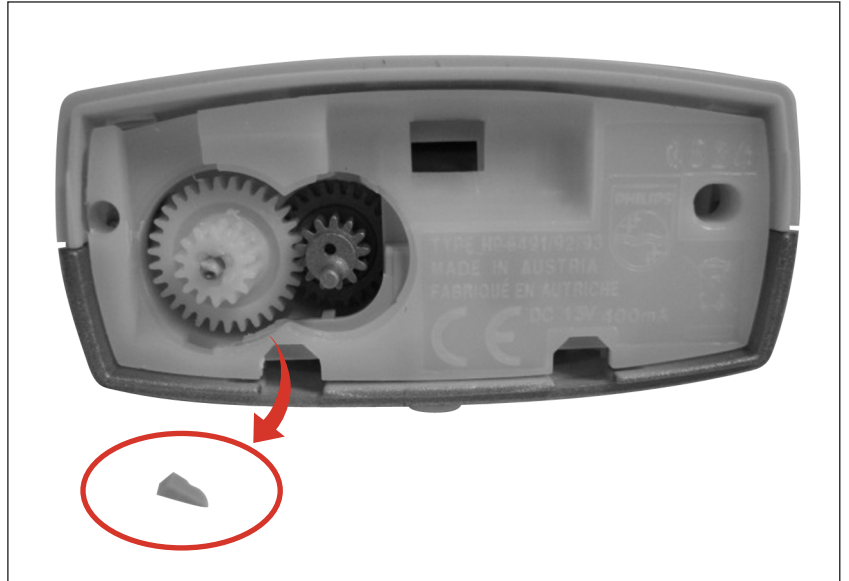
Here you see the opened gearing. As you can see, the small edge from the release knob is hampering you by removing the damaged gearwheel.



Cut this small edge with a very sharp knife, so that the damaged gearwheel becomes free.



Cutted edge.



Now you are able to exchange the damaged gearwheel.



For Repair Kit 4203 035 91701

Only for products with production date till 0744.

1. Exchanging gearwheel 3 and small cover on old epilating body.

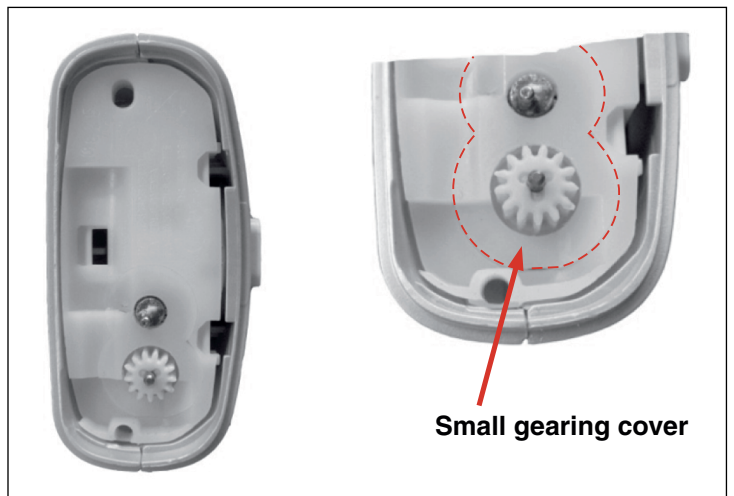
- Open the small gearing cover.
- Remove small cover and gear wheel 3.
- Exchange the 2 parts with below 12 NC's.



4203 035 90860
Small cover



4203 035 54180
Gear wheel 3 new

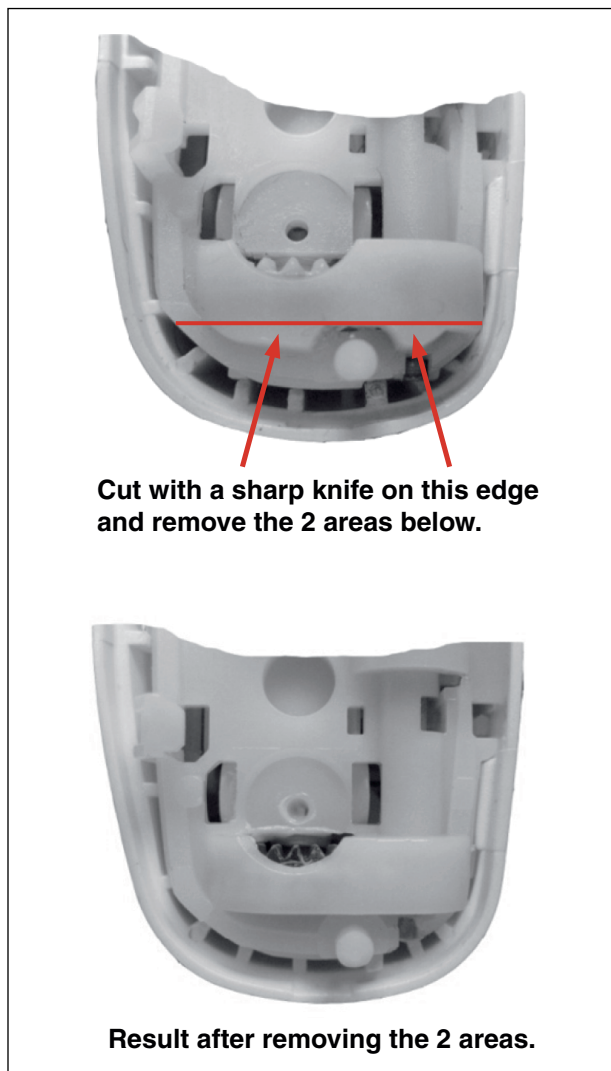


2. Preparing the epilating head.

Please use:

4203 035 54170 Service Epi Head HP648x

4203 024 00561 EPI-Head



= changed