



Philips Domestic Appliances and Personal Care

Service Manual

PRODUCT INFORMATION

Shaving system

- 3-dimensional contour following system
- Lift & Cut system
- Individually floating heads
- Three Super Reflex Action shavingheads HQ55
- Silent power
- Hair collecting chamber

Power system

- Rechargeable
- 16 hour charge time
- Up to 30 minutes cordless shaving time
- World-wide automatic voltage selection

Features

- Travel pouch
- Pop-up trimmer

Luxe

*

Safety information

- This product meets the requirements regarding interference suppression on radio and TV.
- After the product has been repaired, it should function properly and has to meet the safety requirements as officially laid down at this moment.

TECHNICAL INFORMATION

- Voltage : 100-240 V AC 50-60 Hz
- Power consumption : Motor depending
- Motor Voltage : 1,2 V
- Power system : Rechargeable
- Shaving heads : HQ55 - 4222 036 08370
- Charging indication : 1 led
- SAP coding : HQ6696

DISASSEMBLY- AND RE-ASSEMBLY ADVISE

- Remove shaving unit, to prevent damages during repairs.
- Remove the screws A1 (2x).
- Remove cover. (See Fig. 1)
- To remove the trimmer, first disassemble the trimmer slide by pushing down the locking pegs (2 x "X" in exploded view) and move the slide slightly outwards.
- Make room between trimmer and cover with a small screwdriver ("Y" in exploded view).
- Remove screws B1 (2 x).
- The PC-board with motor and hairchamber can now be removed from the housing.
- Detach the motor clamping springs (item 17) on the bearing block with a small screwdriver

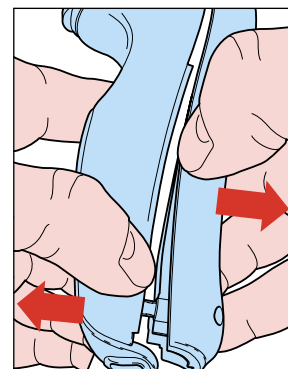


Fig. 1

REPAIR INSTRUCTION

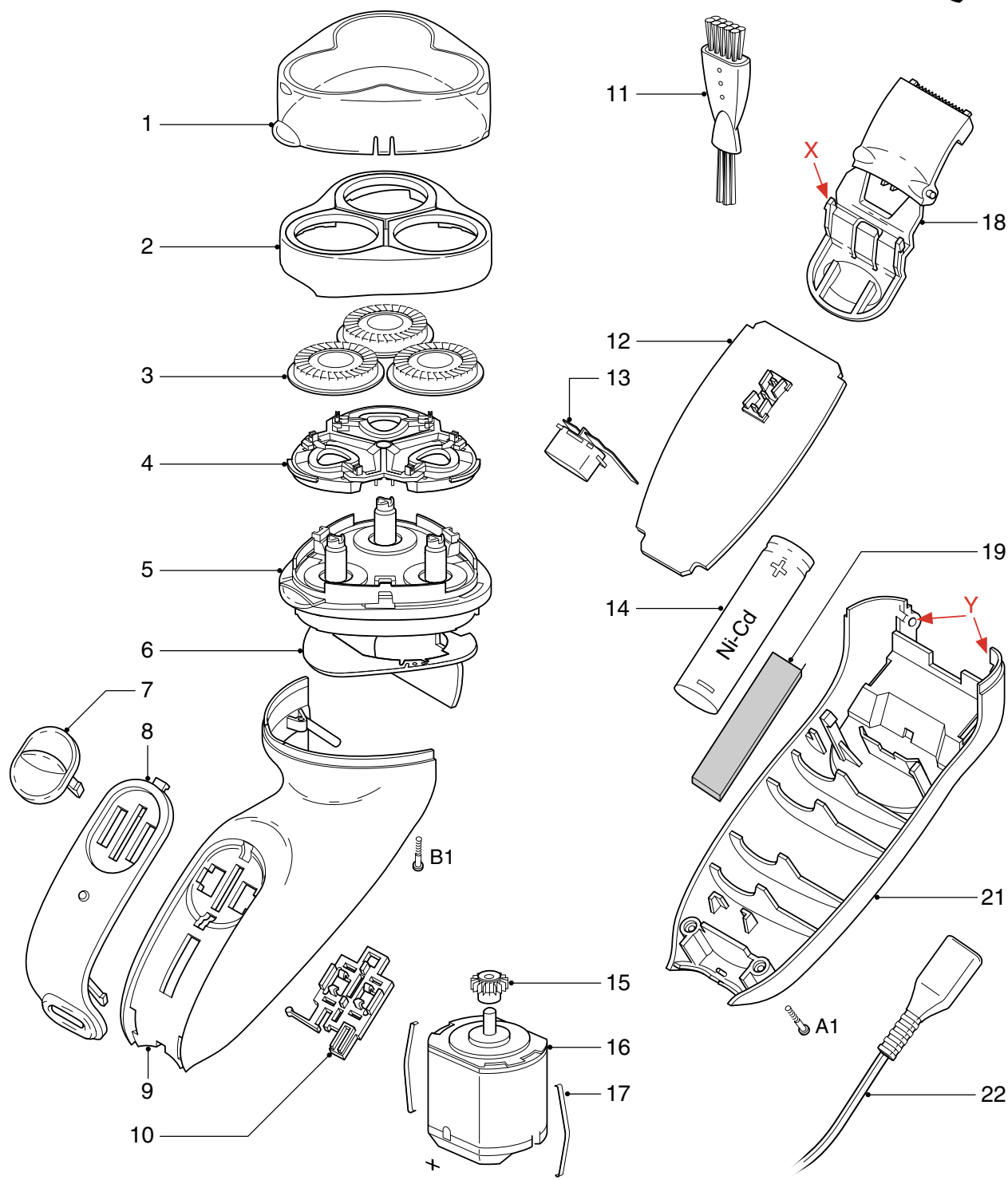
- No specific issues

OPTIONAL (accessories)

- Pouch - 4222 036 05570

EXPLODED VIEW & PARTS LIST

HQ6696



Pos	Service code	Description
1	4222 036 05430	Protecting cap
2	4222 036 13100	Bracket
3	4222 036 08370	HQ55 shaving head
4	4222 036 05460	Holder assy
5	4222 036 13110	Hair chamber complete
6	4222 036 13150	Dust seal
7	4222 036 09690	On/off knob
8	4222 036 13180	Panel
9	4222 036 13330	Housing
10	4222 036 05650	On/off slide assy
11	4822 479 30183	Cleaning brush
12	4222 036 13300	Printed circuit board

Pos	Service code	Description
13	4222 036 10480	Inlet
14	4822 138 10633	AA NiCd cell
15	4822 522 33605	Pinion
16	4822 361 10959	Motor assy
17	4822 492 71735	Motor spring
18	4222 036 13130	Trimmer assy
19	4822 466 12153	Foam
21	4222 036 13140	Cover
22	4822 321 10095	Flex assy
	4822 321 10344	Flex assy
	4822 321 10096	Flex assy
	4822 502 30526	Screw (torx-slot)
	4222 036 05570	Pouch

EUR
NOR
GBR