



Philips Domestic Appliances and Personal Care

Service Manual

PRODUCT INFORMATION

Shaving system

- 3-dimensional contour following system
- Lift & Cut system
- Used shaving lotion
- Waterproof
- Hair collecting chamber

Power system

- Rechargeable
- 8 hour charge time
- Up to 40 minutes cordless shaving time
- World-wide automatic voltage selection

Features

- Travel pouch

Luxe

Safety information

- This product meets the requirements regarding interference suppression on radio and TV.
- After the product has been repaired, it should function properly and has to meet the safety requirements as officially laid down at this moment.

TECHNICAL INFORMATION

- Voltage : 100-240 V AC 50-60 Hz
- Power consumption : Motor depending
- Motor Voltage : 1,2 V
- Power system : rechargeable
- Shaving heads : HQ167 - 4222 036 04250
- Charging indication : 1 LED green
- SAP coding : HQ6707

DISASSEMBLY- AND RE-ASSEMBLY ADVISE

- Remove the shaving unit to prevent damage during repair.
- Remove the outer cover (item 15) and cartridge (item 16).
- Remove 5 A1 screws.

REPAIR INSTRUCTION

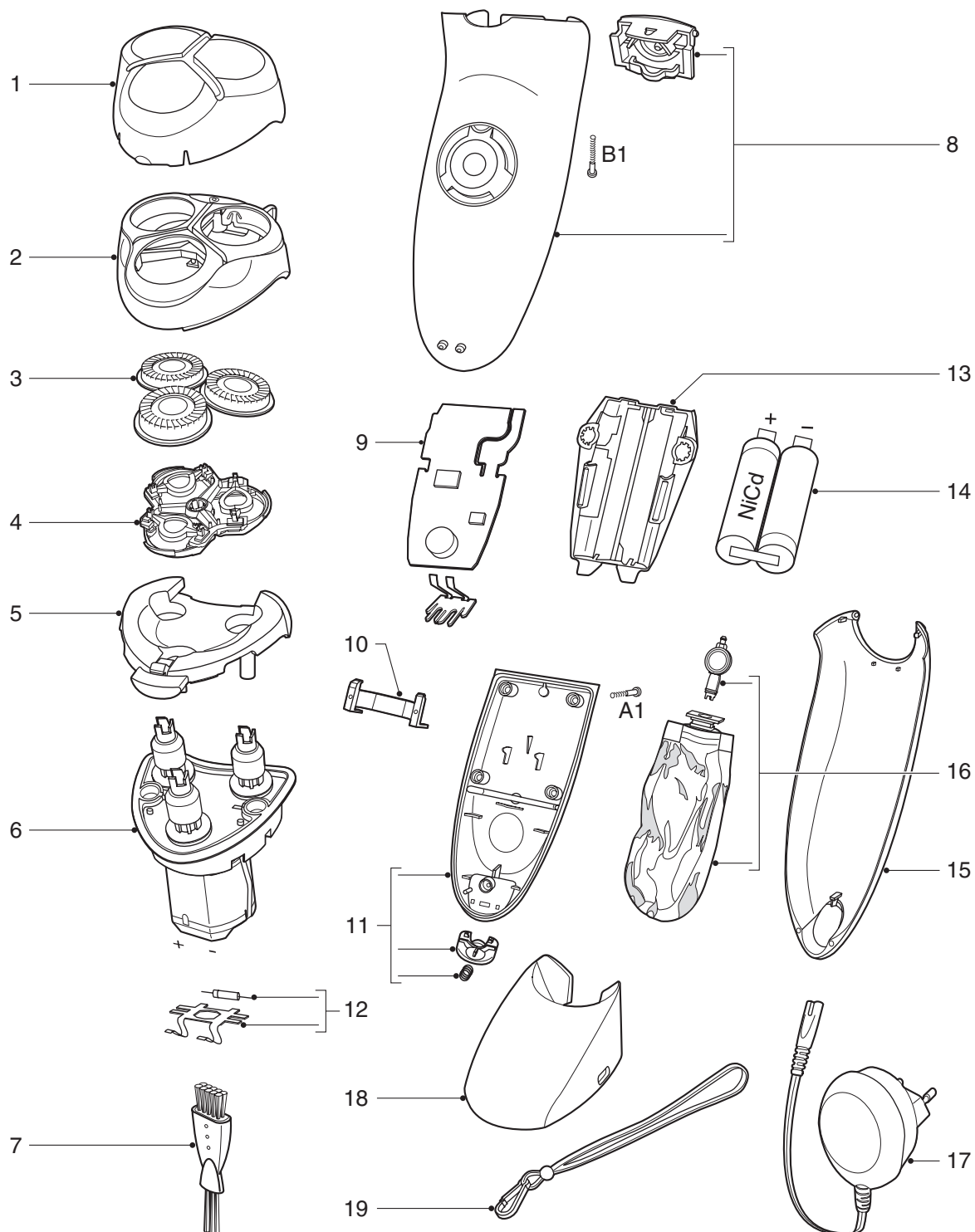
- After the cover (item 11) has been removed, it must be checked if its sealing has not been damaged.
- The cover (item 11) contains a sticker that is permeable to gas yet impermeable to water. This sticker may not be removed under any circumstances.
- Unsolder the motor connector and remove the PCB.
- To replace the motor or the driving unit (parts of item 6), screws B1 must be removed first. Then push the entire unit out of the housing (item 8) and check if its sealing is damaged.
- The entire driving unit is supplied as a single part to guarantee optimal sealing of the gear shafts.
- A replacement of the pump button is only possible after removal of the hair chamber (item 5).
- To guarantee that the shaver is completely watertight, only the original screws may be used.
- To charge the shaver only the original power plug may be used.

OPTIONAL (accessories)

- Pouch - 4222 036 10240

PARTS LIST & EXPLODED VIEW

HQ6707



Pos	Service code	Description
1	4222 036 04140	Protecting cap Aquarius
2	4222 036 10380	Head housing
3	4222 036 04250	Shaving head
4	4222 036 10390	Holder assy
5	4222 036 10400	Hair chamber
6	4222 036 10410	Driving unit
7	4822 479 30183	Cleaning brush
8	4222 036 10260	Housing assy
9	4222 036 05050	Power modul
10	4822 256 10454	Bridge
11	4222 036 10270	Cover
12	4222 036 06700	Motor connector

Pos	Service code	Description
13	4222 036 04220	Battery holder
14	4822 138 10727	NiCd pack AA
15	4222 036 12300	Outer cover
16	4222 036 10190	Car box assy
17	4222 036 04080	Power plug EUR
	4222 036 04090	Power plug GBR
18	4222 036 04100	Stand
19	4222 036 04130	Hanging cord
A	4822 502 14545	s.t.screw spec
B	4822 502 14544	s.t.screw 1.8 x 1.8/T8
	4222 036 10240	Pouch