



Philips Domestic Appliances and Personal Care

# Service Manual

## PRODUCT INFORMATION

### General:

- Mains operation
- World-wide automatic voltage selection
- Electronic on/off switch
- Washable

### Safety information

- This product meets the requirements regarding interference suppression on radio and TV.
- After the product has been repaired, it should function properly and has to meet the safety requirements as officially laid down at this moment.

## TECHNICAL INFORMATION

- Voltage : 100 - 240 Volt / 50 - 60 Hz
- Motor voltage : 15 Volt
- Shaving heads : HQ8 - 4222 036 05820
- SAP coding : HQ7100

## DISASSEMBLY- AND RE-ASSEMBLY ADVICE

### Disassembly:

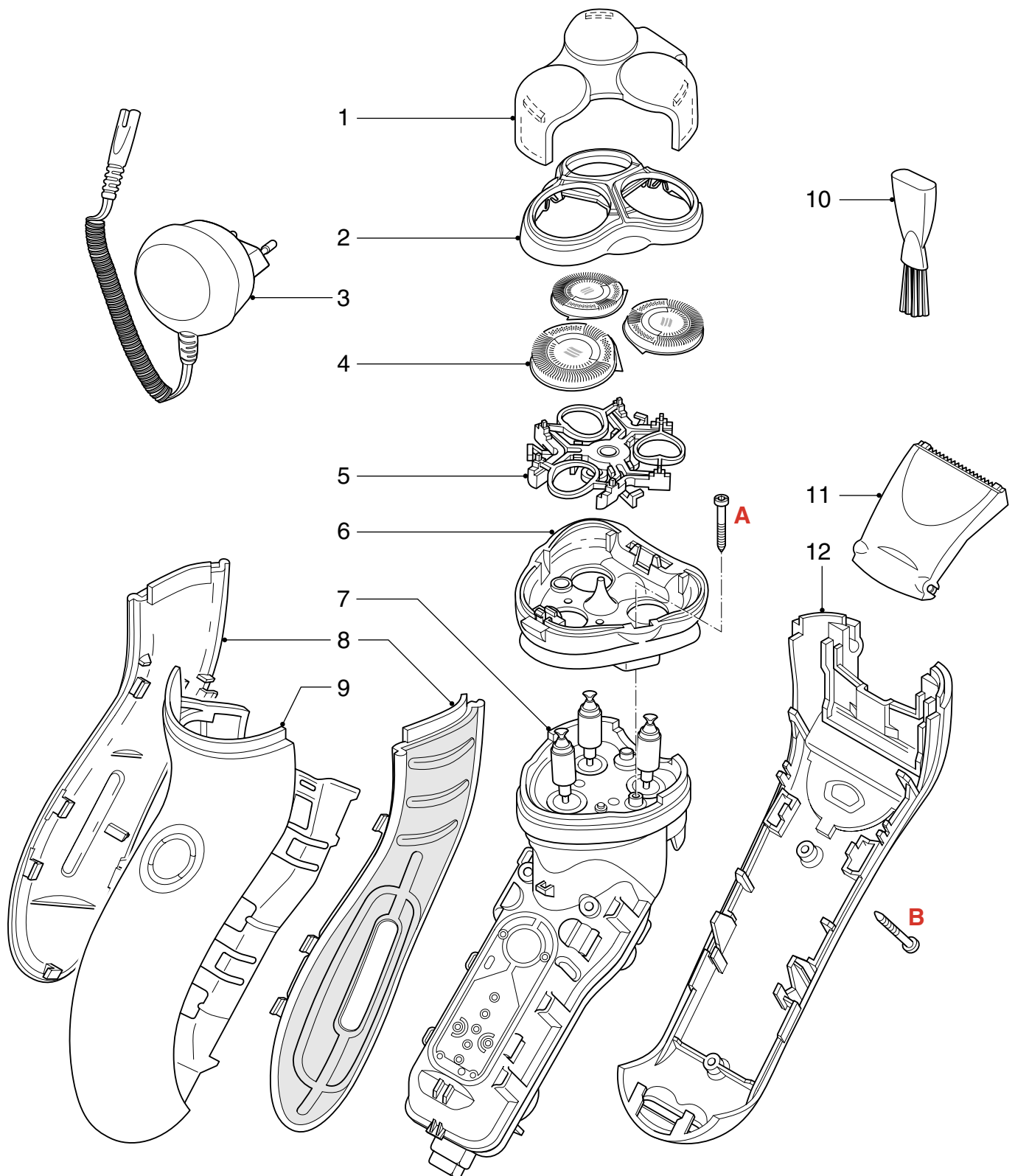
- Remove shaving unit, to prevent damaging during repairing.
- Remove the 2 screws (A) out of the hairchamber.
- Remove the hairchamber from the body.
- Remove the 2 screws (B) on the backside of the shaver.
- Remove the cover.
- Remove the side grips.
- Remove the housing by bending the hooks with a screwdriver.
- Take out the basic body.

## REPAIR INSTRUCTION

- No specific issues

## OPTIONAL (accessories)

- Pouch : 4222 036 14160



Pos	Service code	Description
1	4222 036 14050	Protection cap Cheetah
2	4222 036 12610	Bracket-assy
3	4222 036 06790	Power plug EUR
	4222 036 03970	Power plug GBR
	4222 036 04020	Power plug AUS
	4222 036 06800	Power plug Can/Tw/Ven
4	4222 036 05820	Shaving heads
5	4222 036 12990	Holder-assy

Pos	Service code	Description
6	4222 036 12640	Hairchamber
7	4222 036 12780	Basic body
8	4222 036 12570	Grip left & right
9	4222 036 12460	Housing-assy
10	4222 036 02770	Brush
11	4222 036 12220	Trimmer assy
12	4222 036 12680	Back shell assy
	4222 036 11480	Screw

■ = changed