



Philips Domestic Appliances and Personal Care

# Service Manual

## PRODUCT INFORMATION

### General:

- Mains/rechargeable operation
- World-wide automatic voltage selection
- Electronic on/off switch
- Washable

### Safety information

- This product meets the requirements regarding interference suppression on radio and TV.
- After the product has been repaired, it should function properly and has to meet the safety requirements as officially laid down at this moment.

## TECHNICAL INFORMATION

- Voltage : 100 - 240 Volt / 50 - 60 Hz
- Motor voltage : 1,2 Volt
- Shaving heads : HQ8 - 4222 036 05820
- SAP coding : HQ7140

## DISASSEMBLY- AND RE-ASSEMBLY ADVICE

### Disassembly:

- Remove shaving unit, to prevent damaging during repairing.
- Remove the 2 screws (A) out of the hairchamber.
- Remove the hairchamber from the body.
- Remove the 2 screws (B) on the backside of the shaver.
- Remove the cover.
- Remove the side grips.
- Remove the housing by bending the hooks with a screwdriver.
- Take out the basic body.

## REPAIR INSTRUCTION

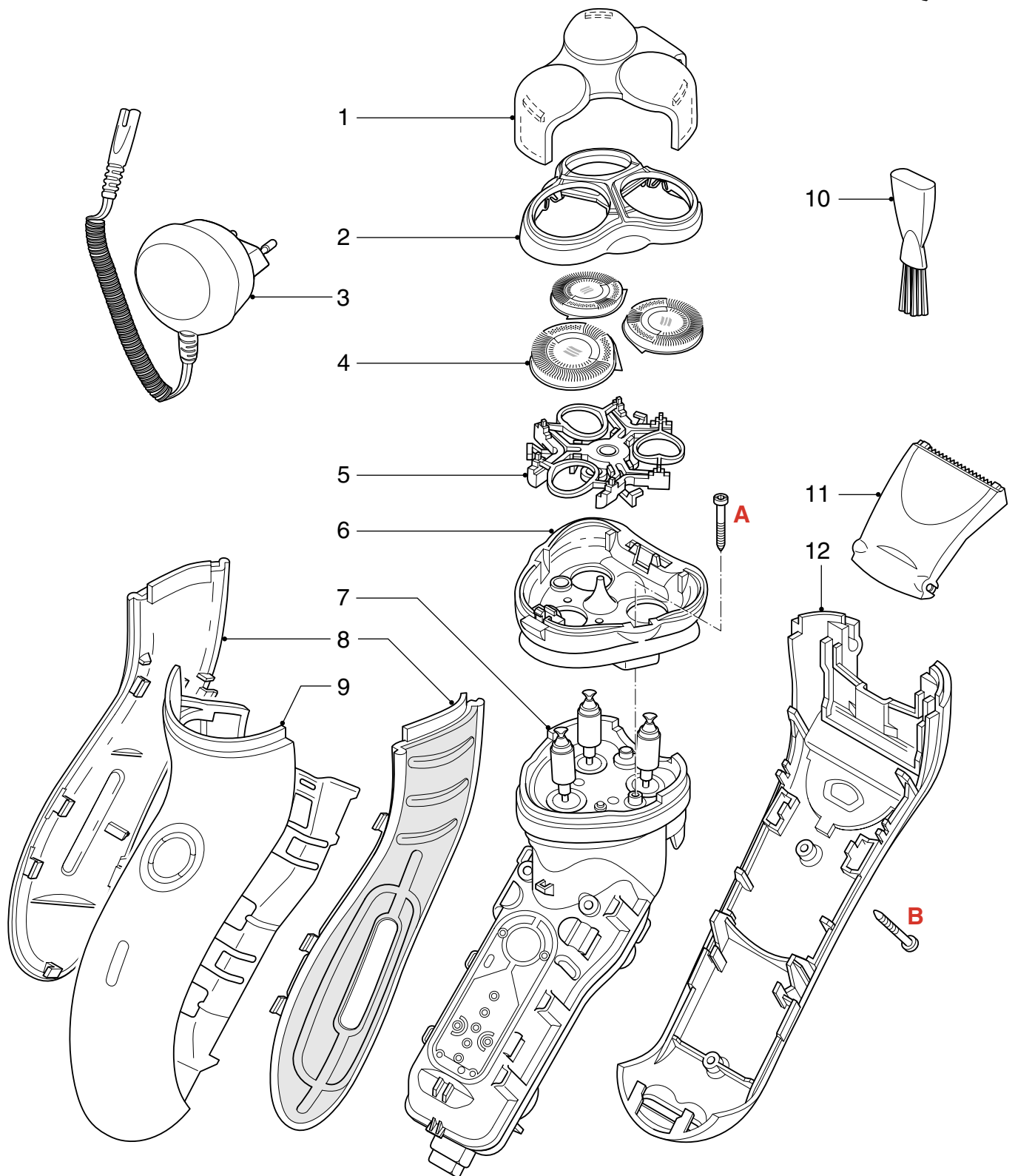
- No specific issues

## OPTIONAL (accessories)

- Car cord : 4222 036 08920
- Pouch : 4222 036 14160

## EXPLODED VIEW &amp; PARTS LIST

HQ7140



Pos	Service code	Description	
1	4222 036 14050	Protection cap	Cheetah
2	4222 036 12610	Bracket-assy	
3	4222 036 04080	Power plug	EUR
	4222 036 04090	Power plug	GBR
	4222 036 04000	Power plug	KOR
	4222 036 04040	Power plug	PRC
	4222 036 08930	Power plug	JAP
	4222 036 06800	Power plug	Can/Tw/Ven
4	4222 036 05820	Shaving heads	

Pos	Service code	Description	
5	4222 036 12990	Holder-assy	
6	4222 036 12640	Hairchamber	
7	4222 036 14100	Basic body	
8	4222 036 12570	Grip left & right	
9	4222 036 12540	Housing-assy	
10	4222 036 02770	Brush	
11	4222 036 12220	Trimmer assy	
12	4222 036 12710	Back shell assy	
	4222 036 11480	Screw	

■ = changed